



EvoSIGNAL Overview

Description

Signal devices warn, guide and protect. The type of visual and audible signals used depends on the application and the surroundings. With EvoSIGNAL, it is easier than ever before to find the signal device you need: the streamlined, modular system optimally covers practically all areas of application.

TwinLIGHT and TwinFLASH

TwinLIGHT and TwinFLASH merge two lighting functions in one element that can then be remotely operated and even configured to suit different escalation levels.

TwinLIGHT - Permanent and Blinking Lights

TwinFLASH - Flash and EVS (enhanced visibility system)

Modular Beacons

EvoSIGNAL is the new modular, simple and clear standard solution for the signaling sector.

- High protection rating IP66
- 62, 85, 120mm beacons available
- Signal modules in common voltages (115–230 VAC, 12/24 VAC/VDC, 12 VAC/VDC, 24 VAC/VDC)
- Five colors available

Beacon Accessories

Accessories for installation and freestanding beacons:

- Base mounting
- M22 installation mounting
- PG29 installation mounting
- Tube mounting
- Bracket mounting with cable gland
- Bracket mounting



Mini



Midi

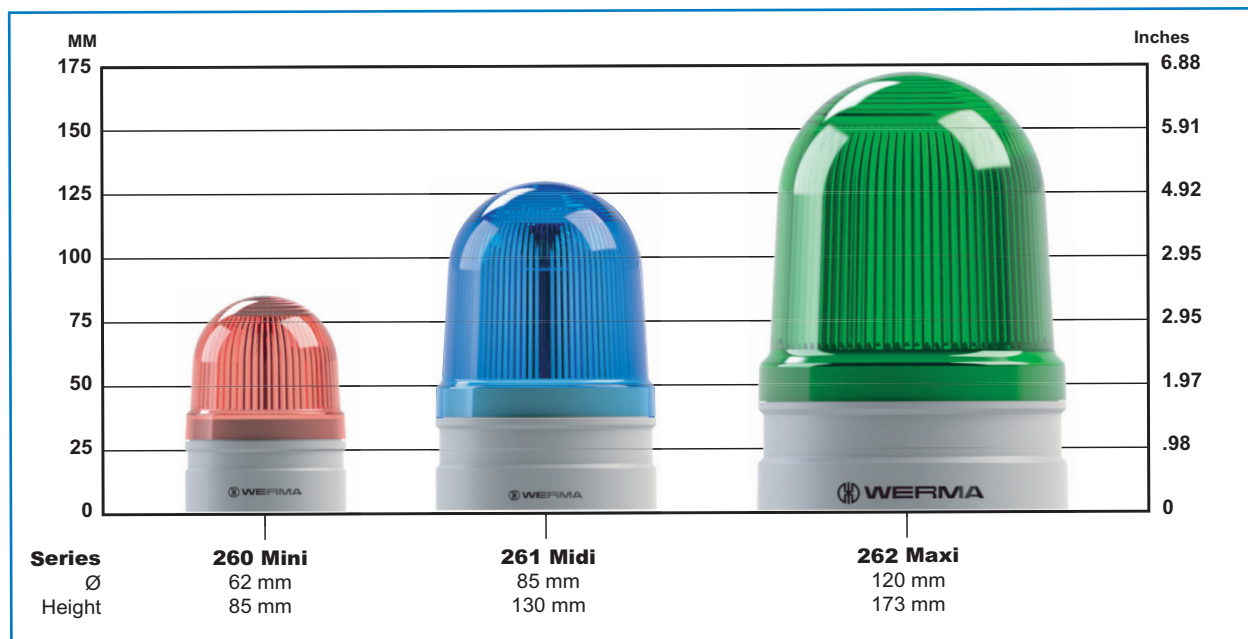


Maxi

Select your WERMA EvoSIGNAL Device

STEP 1

Select height/diameter for your application.

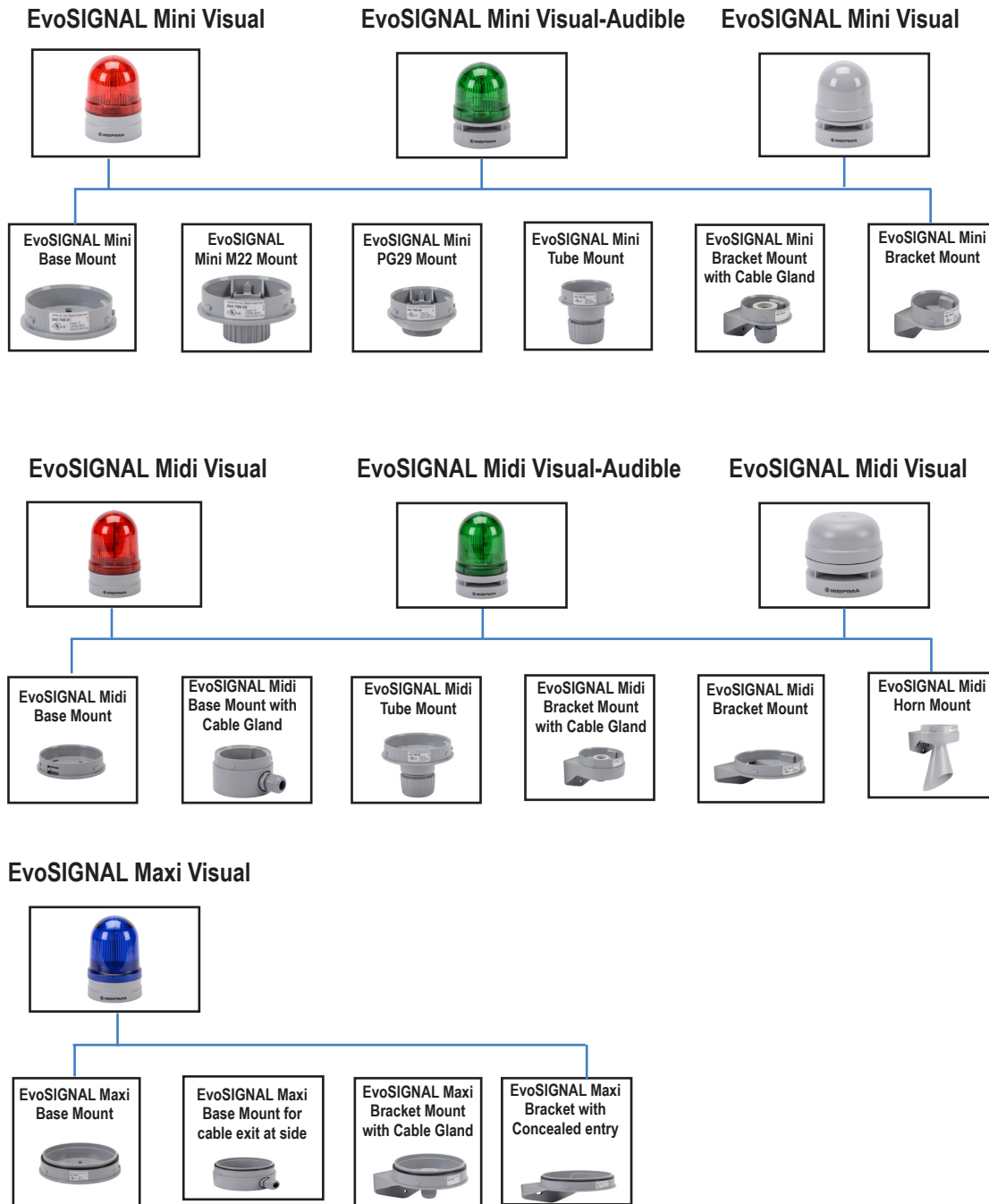




Select your WERMA EvoSIGNAL Device

STEP 2

Select your mounting adapter for the appropriate series of beacon selected.





Signal Devices

Visual Midi TwinLIGHT 85mm Beacon EvoSIGNAL Series

The EvoSIGNAL Midi Beacons are a flexible medium-range solution. They are available in TwinLIGHT, TwinFLASH and Rotating Lighting Effects. Visual, Combi - Visual-Audible, TriColor, and Audible Signal Horns.

Features

- Voltage ratings 115–230 VAC, 12/24 VAC/VDC
- Available in Visual, Visual-Audible, and Audible styles
- TwinLIGHT light effects
- Push-in connection terminals
- 2 year warranty
- Base, tube, bracket and wall mount options
- Requires mounting adapter - sold separately
- IP66

Agency Approvals

- cULus E164155
- CE

To obtain the most current agency approval information, see the Agency Approval Checklist section on the specific part number's web page.



26111060



46121060

Visual Midi TwinLIGHT 85mm Beacon EvoSIGNAL Series Selection Chart

Part Number	Price	LED Color	Drawing Link	Description	Voltage	Current	Starting/ Inrush	dB Rating	Operating Temp /Protection	Life Duration	Housing Material	Weight g [oz]	Connection	
Midi TwinLIGHT Visual														
26111060	\$104.00	Red	PDF	permanent or blinking (1 Hz ON for 420ms)	115–230 VAC	65mA	7.0 A	–	-22 to 140°F [-30 to 60°C] IP66 UL Type 12	50,000h minimum	Polycarbonate cap	181 [6.38]	Push-in Terminal 24-16 AWG	
26121060	\$104.00	Green	PDF											
26131060	\$104.00	Yellow	PDF											
26141060	\$104.00	Clear	PDF											
26151060	\$104.00	Blue	PDF											
26111070	\$97.00	Red	PDF	permanent or blinking (1 Hz ON for 480ms)	12/24 VAC/VDC	175mA	1.0 A	–	-22 to 140°F [-30 to 60°C] IP66 UL Type 12	50,000h minimum	Polycarbonate cap	141 [4.97]		
26121070	\$97.00	Green	PDF									186 [6.56]		
26131070	\$97.00	Yellow	PDF											
26141070	\$97.00	Clear	PDF											
26151070	\$97.00	Blue	PDF											
Midi TwinLIGHT Combi Visual- Audible														
46111060	\$172.00	Red	PDF	permanent or blinking (1 Hz ON for 420ms) (10) selectable	115–230 VAC	150mA	7.0 A	110dB at 1m	-22 to 140°F [-30 to 60°C] IP66 UL Type 12	50,000h minimum	Polycarbonate cap	182 [6.41]	Push-in Terminal 24-16 AWG	
46121060	\$172.00	Green	PDF									186 [6.38]		
46131060	\$172.00	Yellow	PDF											
46141060	\$172.00	Clear	PDF											
46151060	\$172.00	Blue	PDF											
46111070	\$158.00	Red	PDF	permanent or blinking (1 Hz ON for 480ms) (10) selectable	12/24 VAC/VDC	290mA	2.5 A	110dB at 1m	-22 to 140°F [-30 to 60°C] IP66 UL Type 12	50,000h minimum	Polycarbonate cap	180 [6.34]		
46121070	\$158.00	Green	PDF									186 [6.38]		
46131070	\$158.00	Yellow	PDF											
46141070	\$158.00	Clear	PDF											
46151070	\$158.00	Blue	PDF											

Requires Mounting Adapter - sold separately



Signal Devices

Visual Midi TwinFLASH 85mm Beacon EvoSIGNAL Series

Features

- Voltage ratings 115-230 VAC, 12/24 VAC/VDC
- Available in Visual, Visual-Audible, and Audible styles
- TwinFLASH light effects
- Push-in connection terminals
- 2 year warranty
- Base, tube, bracket and wall mount options
- Requires mounting adapter - sold separately
- IP66

Agency Approvals

- cULus E164155
- CE

To obtain the most current agency approval information, see the Agency Approval Checklist section on the specific part number's web page.



26112060



46122060

Visual Midi TwinFLASH 85mm Beacon EvoSIGNAL Series Selection Chart													
Part Number	Price	LED Color	Drawing Link	Description	Voltage	Current	Starting/ Inrush	dB Rating	Operating Temp /Protection	Life Duration	Housing Material	Weight g [oz]	Connection
Midi TwinFLASH Visual													
26112060	\$116.00	Red	PDF	double flash (ON 30ms, Off 160ms, ON 30ms, Off 740ms, 1 Hz flash frequency) or EVS (Enhanced Visibility System) flashing (random flashing)	115–230 VAC	100mA	5.5 A	–	-22 to 140°F [-30 to 60°C] IP66 UL Type 12	50,000h minimum	Polycarbonate cap ABS/ Polycarbonate blend, Gray base	159 [5.60]	Push-in Terminal 24-16 AWG
26122060	\$116.00	Green	PDF									186 [6.56]	
26132060	\$116.00	Yellow	PDF										
26142060	\$116.00	Clear	PDF										
26152060	\$116.00	Blue	PDF	double flash (ON 30ms, Off 160ms, ON 30ms, Off 740ms, 1 Hz flash frequency) or EVS (Enhanced Visibility System) flashing (random flashing)	12/24 VAC/ VDC	150mA	1.0 A	–	-22 to 140°F [-30 to 60°C] IP66 UL Type 12	50,000h minimum	Polycarbonate cap ABS/ Polycarbonate blend, Gray base	148 [5.22]	
26112070	\$109.00	Red	PDF									186 [6.56]	
26122070	\$109.00	Green	PDF										
26132070	\$109.00	Yellow	PDF										
26142070	\$109.00	Clear	PDF										
26152070	\$109.00	Blue	PDF										
Midi TwinFLASH Combi Visual - Audible													
46112060	\$186.00	Red	PDF	double flash (ON 30ms, Off 160ms, ON 30ms, Off 740ms, 1 Hz flash frequency) or EVS (Enhanced Visibility System) flashing (random flashing) (10) selectable	115–230 VAC	290mA	7.0 A	110dB at 1m	-22 to 140°F [-30 to 60°C] IP66 UL Type 12	50,000h minimum	Polycarbonate cap ABS/ Polycarbonate blend, Gray base	195 [6.87]	Push-in Terminal 24-16 AWG
46122060	\$186.00	Green	PDF									186 [6.56]	
46132060	\$186.00	Yellow	PDF										
46142060	\$186.00	Clear	PDF										
46152060	\$186.00	Blue	PDF	double flash (ON 30ms, Off 160ms, ON 30ms, Off 740ms, 1 Hz flash frequency) or EVS (Enhanced Visibility System) flashing (random flashing) (10) selectable	12/24 VAC/ VDC	205mA	2.5 A	110dB at 1m	-22 to 140°F [-30 to 60°C] IP66 UL Type 12	50,000h minimum	Polycarbonate cap ABS/ Polycarbonate blend, Gray base	186 [6.56]	
46112070	\$168.00	Red	PDF										
46122070	\$168.00	Green	PDF										
46132070	\$168.00	Yellow	PDF										
46142070	\$168.00	Clear	PDF										
46152070	\$168.00	Blue	PDF										

Requires Mounting Adapter - sold separately



Signal Devices

Visual Midi Tricolor 85mm Beacon EvoSIGNAL Series

Features

- Voltage ratings 115–230 VAC, 12/24 VAC/VDC
- Push-in connection terminals
- 2 year warranty
- Base, tube, bracket and wall mount options
- Requires mounting adapter - sold separately
- IP66

Agency Approvals

- cULus E164155
- CE

To obtain the most current agency approval information, see the Agency Approval Checklist section on the specific part number's web page.



26143060

Visual Midi Tricolor 85mm Beacon EvoSIGNAL Series Selection Chart

Part Number	Price	LED Color	Drawing Link	Description	Voltage	Current	Starting/ Inrush	Operating Temp /Protection	Life Duration	Housing Material	Weight g [oz]	Connection
26143060	\$152.00	Red / Yellow / Green	PDF	Permanent	115–230 VAC	50mA	7.0 A	-22 to 140°F [-30 to 60°C] IP66 UL Type 12	50,000h minimum	Polycarbonate cap	157 [5.53]	Push-in Terminal 24-16 AWG
26143070	\$145.00	Red / Yellow / Green	PDF	Permanent	12/24 VAC/VDC	135mA	1.0 A			ABS/ Polycarbonate blend, Gray base	143 [5.04]	

Requires Mounting Adapter - sold separately

Visual Midi Rotating 85mm Beacon EvoSIGNAL Series

Features

- Voltage ratings 115–230 VAC, 12/24 VAC/VDC
- Push-in connection terminals
- 2 year warranty
- Base, tube, bracket and wall mount options
- Requires mounting adapter - sold separately
- IP66

Agency Approvals

- cULus E164155
- CE

To obtain the most current agency approval information, see the Agency Approval Checklist section on the specific part number's web page.



26114060

Visual Midi Rotating 85mm Beacon EvoSIGNAL Series Selection Chart

Part Number	Price	LED Color	Drawing Link	Description	Voltage	Current	Starting/ Inrush	Operating Temp /Protection	Life Duration	Housing Material	Weight g [oz]	Connection	
26114060	\$146.00	Red	PDF	Rotating (180 rpm)	115–230 VAC	100mA	7.0 A	-22 to 140°F [-30 to 60°C] IP66 UL Type 12	50,000h minimum	Polycarbonate cap	180 [6.34]	Push-in Terminal 24-16 AWG	
26124060	\$146.00	Green	PDF							ABS/ Polycarbonate blend, Gray base	226 [7.97]		
26134060	\$146.00	Yellow	PDF										
26144060	\$146.00	Clear	PDF										
26154060	\$146.00	Blue	PDF										
26114070	\$139.00	Red	PDF	Rotating (180 rpm)	12/24 VAC/VDC	120mA	1.0 A	-22 to 140°F [-30 to 60°C] IP66 UL Type 12	50,000h minimum	Polycarbonate cap	170 [5.99]		
26124070	\$139.00	Green	PDF							ABS/ Polycarbonate blend, Gray base	226 [7.97]		
26134070	\$139.00	Yellow	PDF										
26144070	\$139.00	Clear	PDF										
26154070	\$139.00	Blue	PDF										

Requires Mounting Adapter - sold separately



Signal Devices

Visual Midi Audible Signal Horn 85mm EvoSIGNAL Series

Features

- Voltage ratings 115–230 VAC, 12/24 VAC/VDC
- Push-in connection terminals
- 2 year warranty
- 10 selectable tones
- Base, tube, bracket and horn mounting options
- Requires mounting adapter - sold separately
- IP66

Agency Approvals

- cULus file E164155
- CE

To obtain the most current agency approval information, see the Agency Approval Checklist section on the specific part number's web page.



16170070

Visual Midi Audible Signal Horn 85mm EvoSIGNAL Series Selection Chart

Part Number	Price	Drawing Link	Description	Voltage	Current	Starting/ Inrush	dB Rating	Operating Temp /Protection	Life Duration	Housing Material	Weight g [oz]	Connection
16170060	\$93.00	PDF	(10) selectable 3.3 kHz	115–230 VAC	105mA	7.0 A	110dB at 1m	-22 to 140°F [-30 to 60°C] IP66 UL Type 12	5,000h minimum	Polycarbonate cap	137 [4.83]	Push-in Terminal 24-16 AWG
16170070	\$86.00	PDF	(10) selectable 3.3 kHz	12/24 VAC/VDC	83mA	2.5 A				ABS/ Polycarbonate blend, Gray base	178 [6.27]	

Requires Mounting Adapter - sold separately

Midi 85mm Beacon EvoSIGNAL Series Accessories

Accessory Overview

The EvoSIGNAL Midi Beacons require a mounting adapter.

Agency Approvals

- cULus E164155
- CE



26170001



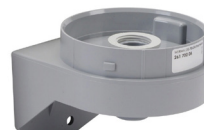
26170002



26170003



26170005



26170006



26170007

Midi 85mm Beacon EvoSIGNAL Series Accessories

Part Number	Price	Drawing Link	Description	Operating Temp /Protection	Housing Material	Weight g [oz]	Cable Entry	Agency Approvals
26170001	\$6.75	PDF	WERMA EvoSIGNAL Midi series mounting base adapter, base mount, gray, ABS plastic. For use with WERMA EvoSIGNAL Midi industrial signal beacons, audible-visual signal beacons and audible signal horns.	-22 to 140°F [-30 to 60°C] IP66 UL Type 12	PC/ABS	40[1.41]	Through Hole	cULus file E164155, RoHS
26170002	\$13.50	PDF	WERMA EvoSIGNAL Midi series mounting base adapter with cable gland, base mount, gray, ABS plastic. For use with WERMA EvoSIGNAL Midi industrial signal beacons, audible-visual signal beacons and audible signal horns.			100 [3.52]	Screwed Cable Gland	RoHS
26170003	\$12.50	PDF	WERMA EvoSIGNAL Midi series mounting bracket adapter with horn, wall mount, gray, ABS plastic. For use with WERMA EvoSIGNAL Midi industrial signal beacons, audible-visual signal beacons and audible signal horns.			136 [4.79]	Membrane Grommet	RoHS
26170005	\$14.50	PDF	WERMA EvoSIGNAL Midi series tube adapter, tube mount, 85mm diameter, 64mm height, gray, ABS plastic. For use with WERMA EvoSIGNAL Midi industrial signal beacons, audible-visual signal beacons and audible signal horns.			59 [2.08]	Through Hole	cULus file E164155, RoHS
26170006	\$11.50	PDF	WERMA EvoSIGNAL Midi series mounting bracket adapter with cable gland, wall mount, gray, ABS plastic. For use with WERMA EvoSIGNAL Midi industrial signal beacons, audible-visual signal beacons and audible signal horns.			87 [3.06]	Screwed Cable Gland	RoHS
26170007	\$7.75	PDF	WERMA EvoSIGNAL Midi series mounting bracket adapter, wall mount, gray, ABS plastic. For use with WERMA EvoSIGNAL Midi industrial signal beacons, audible-visual signal beacons and audible signal horns.			54 [1.90]	Through Hole	cULus file E164155, RoHS

To obtain the most current agency approval information, see the Agency Approval Checklist section on the specific part number's web page.