



# Signal Devices

## Visual 98mm Base Mount Beacons

### Features

- Choose from permanent incandescent, permanent LED, flashing Xenon, EVS (Enhanced Visibility System) flashing LED, and rotating models
- Base mount installation
- 98mm diameter
- Light-intensive Xenon flash in flash models
- Bulb not included with 826 incandescent models
- 25W bulb included with 827 incandescent models
- Various mounting accessories available
- 2-year warranty



### Visual 98mm Base Mount Beacons 826, 827, and 828 Series Selection Chart

Part Number	Price	Color	Drawing link	Description	Voltage	Current	Starting Current	Operating Temp /Protection	Life Duration	Housing Material	Weight g [oz]	Connection	Agency Approvals
74mm Base Mount													
<a href="#">82610000</a>	\$41.50	Red	<a href="#">PDF</a>	Incandescent Permanent Light 98mm	12–240V AC/DC max (depends on bulb selection; bulb sold separately)	Depends on bulb selection. (bulb sold separately)	-	-4 to 122°F [-20 to 50°C]  IP65 when mounted	Up to 5,000h	Polycarbonate cap Polycarbonate/ABS base	180 [6.35]		
<a href="#">82620000</a>	\$45.00	Green	<a href="#">PDF</a>										
<a href="#">82630000</a>	\$41.50	Yellow	<a href="#">PDF</a>										
<a href="#">82640000</a>	\$45.00	Clear	<a href="#">PDF</a>										
<a href="#">82650000</a>	\$45.00	Blue	<a href="#">PDF</a>	Incandescent Blinking Light (1.5 Hz blinking frequency, 5Ws flash energy) 98mm	24V AC/DC	max. 3.0 A	≤ 3.0 A						
<a href="#">82710075</a>	\$101.00	Red	<a href="#">PDF</a>										
<a href="#">82720075</a>	\$109.00	Green	<a href="#">PDF</a>										
<a href="#">82730075</a>	\$101.00	Yellow	<a href="#">PDF</a>										
<a href="#">82740075</a>	\$109.00	Clear	<a href="#">PDF</a>		115V AC/DC	max. 500mA							
<a href="#">82750075</a>	\$109.00	Blue	<a href="#">PDF</a>										
<a href="#">82710077</a>	\$101.00	Red	<a href="#">PDF</a>										
<a href="#">82720077</a>	\$109.00	Green	<a href="#">PDF</a>										
<a href="#">82730077</a>	\$101.00	Yellow	<a href="#">PDF</a>	Xenon Flashing Light (1Hz flash frequency, 1W flash energy) 98mm	24VDC	300mA							
<a href="#">82740077</a>	\$109.00	Clear	<a href="#">PDF</a>										
<a href="#">82750077</a>	\$109.00	Blue	<a href="#">PDF</a>										
<a href="#">82810055</a>	\$122.00	Red	<a href="#">PDF</a>					115VAC	65mA 50–60 Hz				
<a href="#">82820055</a>	\$129.00	Green	<a href="#">PDF</a>										
<a href="#">82830055</a>	\$122.00	Yellow	<a href="#">PDF</a>										
<a href="#">82840055</a>	\$129.00	Clear	<a href="#">PDF</a>										
<a href="#">82850055</a>	\$207.00	Blue	<a href="#">PDF</a>										
<a href="#">82810067</a>	\$122.00	Red	<a href="#">PDF</a>										
<a href="#">82820067</a>	\$129.00	Green	<a href="#">PDF</a>										
<a href="#">82830067</a>	\$122.00	Yellow	<a href="#">PDF</a>										
<a href="#">82840067</a>	\$129.00	Clear	<a href="#">PDF</a>										
<a href="#">82850067</a>	\$207.00	Blue	<a href="#">PDF</a>						4,000,000 flashes		220 [7.76]		

To obtain the most current agency approval information, see the Agency Approval Checklist section on the specific part number's web page.

## Bulbs



[95582635](#)

Bulbs						
Part Number	Price	Description	Wattage	Voltage	For Use With	Life Duration
<a href="#">95582635</a>	\$8.75	Bulb for incandescent light BA15d bayonet socket	15W	24V AC/DC	826xxxxx	up to 5,000h
<a href="#">95582637</a>	\$8.75			115VAC		
<a href="#">95582638</a>	\$8.75			230VAC		
<a href="#">95582735</a>	\$8.50	Bulb for blinking incandescent light B15d bayonet socket	25W	24V AC/DC	827xxxxx	up to 2,000h
<a href="#">95582737</a>	\$8.50			115VAC		
<a href="#">95588524</a>	\$12.00	Halogen bulb G6.35	20W	12V	885xxx78	
<a href="#">95588525</a>	\$12.00			24V	885xxx75	



[95582735](#)



[95588524](#)



# Signal Devices

## Visual 98mm Base Mount Beacons

Visual 98mm Base Mount Beacons 829 Series Selection Chart																							
Part Number	Price	Color	Drawing Link	Description	Voltage	Current	Starting Current	Operating Temp /Protection	Life Duration	Housing Material	Weight g [oz]	Connection	Agency Approvals										
74mm (Base Mount)																							
<a href="#">82910055</a>	\$156.00	Red	<a href="#">PDF</a>	Permanent/ Blinking LED (blinking frequency 1.5 Hz) 98mm	24VDC	≤ 150mA					200 [7.05]												
<a href="#">82920055</a>	\$209.00	Green	<a href="#">PDF</a>																				
<a href="#">82930055</a>	\$156.00	Yellow	<a href="#">PDF</a>																				
<a href="#">82950055</a>	\$219.00	Blue	<a href="#">PDF</a>																				
<a href="#">82911055</a>	\$185.00	Red	<a href="#">PDF</a>	Rotating LED 98mm	24VDC	≤ 170mA	< 500mA			Polycarbonate cap Polycarbonate/ ABS base	215 [7.58]	Terminal screw ≤ 2.5 mm² AWG 16–14 Cable diameter 5–7 mm	cULus file E164155, CE, RoHS										
<a href="#">82921055</a>	\$283.00	Green	<a href="#">PDF</a>																				
<a href="#">82931055</a>	\$185.00	Yellow	<a href="#">PDF</a>																				
<a href="#">82941055</a>	\$283.00	Clear	<a href="#">PDF</a>																				
<a href="#">82951055</a>	\$283.00	Blue	<a href="#">PDF</a>		115–230 VAC	≤ 200mA					205 [7.23]												
<a href="#">82911068</a>	\$214.00	Red	<a href="#">PDF</a>																				
<a href="#">82921068</a>	\$312.00	Green	<a href="#">PDF</a>																				
<a href="#">82931068</a>	\$214.00	Yellow	<a href="#">PDF</a>																				
<a href="#">82941068</a>	\$312.00	Clear	<a href="#">PDF</a>	Double Flash LED 98mm	24VDC	≤ 100mA		-4 to 122°F [-20 to 50° C]  IP65 when mounted	up to 50,000h		205 [7.23]												
<a href="#">82951068</a>	\$312.00	Blue	<a href="#">PDF</a>																				
<a href="#">82912055</a>	\$167.00	Red	<a href="#">PDF</a>		115–230 VAC	≤ 100mA					200 [7.05]												
<a href="#">82932055</a>	\$168.00	Yellow	<a href="#">PDF</a>																				
<a href="#">82942055</a>	\$255.00	Clear	<a href="#">PDF</a>	Permanent LED 98mm	115VAC	≤ 30mA	≤ 500mA				205 [7.23]	Terminal screws ≤ 2.5 mm² AWG 24–11 Cable diameter 5–7 mm											
<a href="#">82912068</a>	\$188.00	Red	<a href="#">PDF</a>																				
<a href="#">82932068</a>	\$188.00	Yellow	<a href="#">PDF</a>																				
<a href="#">82942068</a>	\$263.00	Clear	<a href="#">PDF</a>																				
<a href="#">82913067</a>	\$168.00	Red	<a href="#">PDF</a>	Permanent LED 98mm	115VAC	≤ 30mA	≤ 500mA				200 [7.05]												
<a href="#">82923067</a>	\$225.00	Green	<a href="#">PDF</a>																				
<a href="#">82933067</a>	\$168.00	Yellow	<a href="#">PDF</a>																				
<a href="#">82953067</a>	\$237.00	Blue	<a href="#">PDF</a>																				
<a href="#">82915055</a>	\$232.00	Red	<a href="#">PDF</a>	Permanent/ blinking / rotating LED 98mm	24VDC	≤ 300mA	< 500mA				205 [7.23]	Terminal screws ≤ 2.5 mm² AWG 24–11 Cable diameter 5–7 mm											
<a href="#">82925055</a>	\$381.00	Green	<a href="#">PDF</a>																				
<a href="#">82935055</a>	\$232.00	Yellow	<a href="#">PDF</a>																				
<a href="#">82955055</a>	\$381.00	Blue	<a href="#">PDF</a>																				
<a href="#">82919055</a>	\$206.00	Red	<a href="#">PDF</a>	*Enhanced Visibility System (EVS) flashing LED 98mm	24VDC	≤ 150mA					215 [7.58]	Terminal screws ≤ 2.5 mm² AWG 16–14 Cable diameter 5–7 mm											
<a href="#">82939055</a>	\$206.00	Yellow	<a href="#">PDF</a>																				
<a href="#">82949055</a>	\$313.00	Clear	<a href="#">PDF</a>		115–230 VAC						≤ 150mA					215 [7.58]							
<a href="#">82919068</a>	\$233.00	Red	<a href="#">PDF</a>																				
<a href="#">82939068</a>	\$233.00	Yellow	<a href="#">PDF</a>		115–230 VAC						≤ 150mA					215 [7.58]							
<a href="#">82949068</a>	\$323.00	Clear	<a href="#">PDF</a>																				

\*EVS models provide a random flash pattern for increased visibility.

To obtain the most current agency approval information, see the Agency Approval Checklist section on the specific part number's web page.

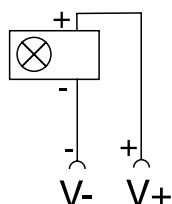


# Signal Devices

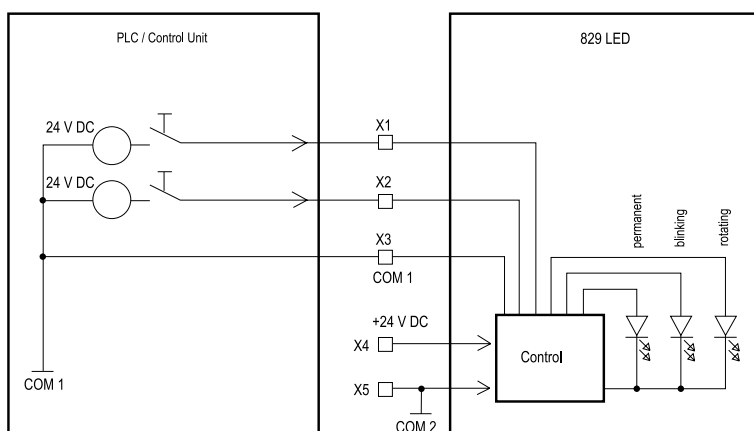
## Visual 98mm Base Mount Beacons

### Schematics

**826, 827, 828, Series and All 829s except:  
82915055, 82925055, 82935055, 82955055**



**Permanent/Blinking/Rotating LED:  
82915055, 82925055, 82935055, 82955055**



With positive logic	
X1	1 = +24 V, 0 = COM 1
X2	1 = +24 V, 0 = COM 1
X3	COM 1
X4	+24 V
X5	COM 2
With negative logic	
X1	1 = -24 V, 0 = COM 1
X2	1 = -24 V, 0 = COM 1
X3	COM 1
X4	+24 V
X5	COM 2

Binary Code (for external triggering)

X1	X2	mode
0	0	Permanent ON/Solid
0	1	Rotating
1	0	Blinking
1	1	Permanent ON/Solid



# Signal Devices

## Beacon Accessories



WERMA Beacons Accessories						
Part Number	Price	Drawing Link	Description	Operating Temp.	Material	Weight
Installation Beacon Accessories						
<a href="#">97581201</a>	\$15.00	<a href="#">PDF</a>	WERMA tube adapter, tube mount, 57mm diameter, black, polyamide. For use with beacons with 37mm (PG 29) mounting installation.	-4 to 122°F [-20 to 50°C]	Polyamide / Fiberglass	1.13 g [0.04 oz]
<a href="#">97581202</a>	\$14.50	<a href="#">PDF</a>	WERMA surface mounting base, base mount, black, polyamide. For use with beacons with 37mm (PG 29) mounting installation.		Polyamide / Fiberglass with rubber seal	2.83 g [0.1 oz]
<a href="#">97581503</a>	\$46.00	<a href="#">PDF</a>	WERMA beacon enclosure, surface mount, 1 hole. For use with beacons with 37mm (PG 29) mounting installation.		Polycarbonate/ ABS blend	8.5 g [0.3 oz]
<a href="#">97581507</a>	\$64.00	<a href="#">PDF</a>	WERMA beacon enclosure, surface mount, 2 holes. For use with beacons with 37mm (PG 29) mounting installation.			14.17 g [0.5 oz]
<a href="#">97581508</a>	\$84.00	<a href="#">PDF</a>	WERMA beacon enclosure, surface mount, 3 holes. For use with beacons with 37mm (PG 29) mounting installation.			17g [0.6 oz]
<a href="#">97581522</a>	\$6.00	<a href="#">PDF</a>	WERMA anti-twist washer, stainless steel. For use with Werma beacons with 37mm (PG 29) mounting installation.		304 Stainless steel	0.57 g [0.02 oz]
Freestanding Beacon Accessories						
<a href="#">96000001</a>	\$18.00	<a href="#">PDF</a>	WERMA mounting bracket, tube mount, black, polyamide. For use with 50mm or 70mm terminal elements. M16 x 1.5mm cable gland included.	-4 to 122°F [-20 to 50°C]	Polyamide	57g [2.01 oz]
<a href="#">97520901</a>	\$21.50	<a href="#">PDF</a>	WERMA plastic base with integrated tube, base mount, 70mm diameter, 110mm length, black, polyamide. For use with 209 or 219 series beacons.		Polyamide	0.1 lbs [1.6 oz]
<a href="#">97520902</a>	\$6.00	<a href="#">PDF</a>	WERMA cable gland, M25 x 1.5mm thread type, polyamide, black, accepts 8 to 17mm diameter cable, IP68.		Nylon	0.1 lbs [1.6 oz]
<a href="#">97582603</a>	\$45.00	<a href="#">PDF</a>	WERMA galvanized wire guard, steel. For use with 826, 827, 828 or 829 series industrial signal beacons.		Wire D 3mm, chromed	140g [4.93 oz]
<a href="#">97582605</a>	\$10.50	<a href="#">PDF</a>	WERMA mounting bracket, wall mount, black, ABS/ polycarbonate. For use with 826, 827, 828 and 829 series industrial signal beacons.		Polycarbonate/ ABS blend	62g [2.19 oz]

