



Wera Wrenches

Adjustable Wrenches

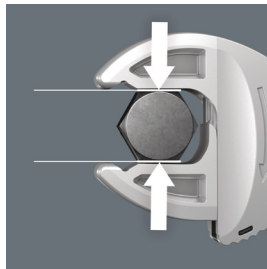
Wera Joker adjustable wrenches continuously and automatically grip all hexagonal sizes in the indicated range of dimensions – metric and imperial. The integrated lever mechanism securely clamps the hexagon screw or bolt between the jaws, which significantly reduces the risk of slippage or damage. The ratchet feature ensures fast and consistent screwdriving without removing the tool. The single-arm design, in conjunction with the ratchet feature and the corner-width prism, makes it possible to work even in confined spaces.

Features

- Automatic and continuous grip of hexagon screws and bolts
- Lever mechanism when gripping prevents slipping and damage
- Fast and consistent screwdriving without removing the wrench thanks to mechanical ratchet function
- Return angle of only 30° through placement in the corner-width rectangular prisms in the mouth



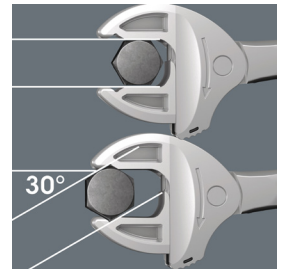
Continuously Self-adjusting



Gentle Gripping Action



Ratchet Mechanism



Small Return Angle

Adjustable Wrenches						
Part Number	Wrench Type	Fastening Size	Jaw Thickness	Overall Length	Wrench Features	Price
05020099001	Adjustable	1/4-3/8in	0.30in (7.7mm)	4.7in (119mm)	Automatic and continuous self-setting 30 degree low return angle Contactless jaw opening feature	\$38.00
05020100001		7/16-1/2in	0.39in (10.0mm)	6.1in (155mm)		\$42.00
05020101001		5/8-3/4in	0.55in (14.0mm)	8.9in (226mm)		\$60.00
05020102001		15/16-1 1/4in	0.79in (20.0mm)	12.7in (322mm)		\$76.00
05020103001		1/2-5/8in	0.49in (12.4mm)	7.5in (190mm)		\$50.00
05020104001		3/4-15/16in	0.63in (16.0mm)	10.0in (255mm)		\$68.00

Adjustable Wrench Sets				
Part Number	Number of Pieces	Part Image	Set Includes	Price
05020110001	4		(4) Joker adjustable wrenches (1/4-3/8in capacity, 7/16-1/2in capacity, 1/2-5/8in capacity, 5/8-3/4in capacity), (1) compact folding pouch	\$200.00