



Industrial LED Lighting



CA0121S0602

Compact Alpha Series

Designed for use in different work environments. A compact construction combining state-of-the-art LED technology with a sturdy, anodized aluminum casing highly resistant to liquids and machine tool debris. Suitable in any workplace where the space is very limited, but at the same time requires high performance and intense lighting.



TA0221S0403

TRACKALPHA Series

Designed for universal use. Lighting system for industrial automation, medium and large CNC applications. Lamp with sturdy anodized aluminum structure resistant to shavings, vibrations, front diffusing tempered glass 0.20" (5mm) thick. Suitable in any workplace where there are liquids and oils.



TA0524S0203

TRACKALPHA-PRO Series

Lighting system suitable for industrial automation, medium and large CNC applications. Lamp with sturdy anodized aluminum structure resistant to shavings, vibrations, clear tempered frosted glass 0.20" (5mm) thick. Suitable in any workplace where there are liquids and oils.

Accessories



CAF02



TAF03



HNF07



HNF02



TACLIP



Industrial LED Lighting

VEGA Series



The VEGA Series recessed LED light bar is an ideal solution for use in small spaces inside medium and large CNC machines, and allows mounting outside the machine's work area. The aluminum body with 0.16 in (4mm) thick printed glass comes with an IP67/IP69 protection rating and offers a high level of resistance to dust and liquids.

VE0221S01

Herionova Recessed Series



Used in large CNC machines or when brighter illumination in wet industrial environments is required. Also suitable for industrial applications such as automation processes and medium CNC machines. State-of-the art Light Emitting Diode (LED) technology inside a robust, anodized aluminum casing, resistant to vibrations and machining debris, front tempered frosted glass 0.16 in (4mm) thick. Particularly suitable in workplaces where oils and other liquids are in use.

HN0221S0303

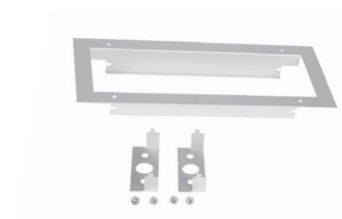
Herionova Cable Series



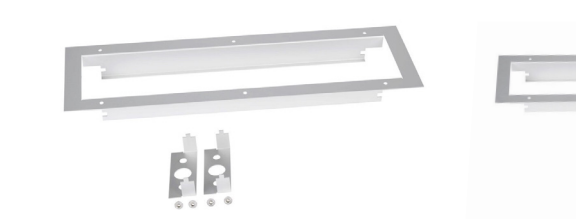
Used for application in diverse working environments. Suitable for industrial applications, automation processes, medium and large CNC machines. State-of-the art Light Emitting Diode (LED) technology inside a robust, anodized aluminum casing, resistant to vibrations and machining debris, front tempered frosted glass 0.16 in (4mm) thick. Particularly suitable in workplaces where oils and other liquids are in use.

HN0221S0307

Accessories



HNFx03



HNFx04



HNFx05



HNFx06



LED Light Bars

TRACKALPHA-PRO Series

Features

- Housing made entirely of anodized aluminum
- Outer diameter 2.76 in (70mm) for confined workspaces
- 4 lengths available from 12.64 in (321mm) to 36.25 in (921mm)
- Operating temperature -20 to 45°C [-4 to 113°F]
- Light beam angle 120°
- LED lifespan: (L70) > 60,000h
- Light color 5,000K CRI 80
- Power supply 120 VAC
- 9.8 ft (3m) power cord
- Attach with included [TAFX03](#) side-mounting brackets
- 4-year warranty



[TA0524S0203](#)



LED Light Bars TRACKALPHA-PRO Series								
Part Number	Price	Light Color	Operating Voltage	Power Consumption (Watts)	Body Material	Light Length in [mm]	Cable Length ft [m]	Drawing Link
TA0224S0203	\$240.00	Daylight white	120VAC	13	Anodized aluminum	12.64 [321]	9.8 [3] Pigtail	PDF
TA0324S0203	\$295.00			19.5		17.36 [441]		PDF
TA0524S0203	\$435.00			32.5		26.81 [681]		PDF
TA0724S0203	\$515.00			45.5		36.25 [921]		PDF

Mounting brackets included with each light bar.

Accessories - TRACKALPHA-PRO Series			
Part Number	Price	Description	Drawing Link
TACLIP	\$25.00	CCEA rear mounting clips, replacement, aluminum. For use with CCEA TRACKALPHA and TRACKALPHA-PRO series LED light bars.	PDF
TAFX03	\$27.00	CCEA side bracket, replacement, stainless steel. For use with CCEA TRACKALPHA series LED light bars.	PDF



[TACLIP](#)



[TAFX03](#)



LED Light Bars TRACKALPHA-PRO Series Specifications

Specifications

LED Light Bars TRACKALPHA-PRO Series Technical Specifications				
Part Number	<i>TA0224S0203</i>	<i>TA0324S0203</i>	<i>TA0524S0203</i>	<i>TA0724S0203</i>
Luminous Color	Daylight white			
Color Temperature	5000K			
Illuminance (lux)	450	650	1000	1300 t
Rated Voltage	120VAC			
Operating Voltage Range	100 -120 VAC, 60Hz			
Rated Power Consumption (Watts)	13	19.5	32.5	46
Operating Ambient Temperature	-20 to 45°C [4 to 113°F]			
Operating Ambient Humidity	Less than 90% (no condensation)			
Mounting Location	Indoors			
Mounting Direction	All direction			
Protection Rating	IP67			
Impact Resistance	IK06			
Insulation Resistance	More than 5MΩ at 500VDC between the terminals and the chassis			
Withstanding Voltage	500VAC applied for 1 minute between terminals and chassis without breaking insulation			
Vibration Resistance	19.6 m/s ² (30Hz, back and forth: 2h, right to left: 2h, up and down: 2h)			
Weight lb [kg]	3.20 [1.45]	4.08 [1.85]	5.78 [2.65]	7.72 [3.50]
Agency Approvals *	cURus in compliance with UL1598, CE			

*To obtain the most current agency approval information, see the Agency Compliance & Certifications Checklist section on the specific part number's web page.