



Precision Servo Gearboxes

SureGear® Servo Gearbox Selection													
Servo Motor	Gear Ratio	SureGear Gearbox	Frame Size (mm)	Motor Nominal Output Torque		Combo Nominal Output Torque		Nominal Output Speed (rpm)	Max Output Speed (rpm)	Available Load Inertia @ 5:1 Mismatch *			
				N-m	lb-in	N-m	lb-in			kg-cm2	lb-in-s2		
SV2L-201(x) APMC-FAL01xxx	5:1	PGD047-05A1	47	0.32	2.83	1.52	13.44	600	1200.00	6.76	0.006		
		PGA050-05A1	50							6.94	0.006		
		PGA070-05A1	70							5.91	0.005		
		PGB070-05A1	70							1.59**	0.001**		
	PGD047-10A1	47	3.04			26.89	300			600.00	28.15	0.025	
	PGA050-10A1	50									28.35	0.025	
	PGA070-10A1	70									25.75	0.023	
	PGB070-10A1	70									8.35**	0.007**	
	15:1	PGA050-15A1	50			4.32		38.21	200		400.00	62.66	0.055
		PGA070-15A1	70			58.16		0.051					
		PGB070-15A1	70			4.22		37.36				54.11	0.048
	25:1	PGD047-25A1	47			7.20		63.68	120		240.00	174.69	0.155
		PGA050-25A1	50				174.69			0.155			
		PGA070-25A1	70				162.81			0.144			
		PGB070-25A1	70				7.04			62.26		151.56	0.134
	50:1	PGD064-50A1	64			14.40	127.35	60		120.00		661.25	0.585
SV2L-202(x)	5:1	PGD064-05A2	64	0.64	5.7	3.04	27.08	600		1200.00		28.75	0.025
		PGA070-05A2	70									29.33	0.026
		PGB070-05A2	70									2.98	26.51
	PGD064-10A2	64	6.08			54.15	300		600.00		118.80	0.105	
	PGA070-10A2	70									119.40	0.106	
	PGB070-10A2	70									5.95	53.01	102.00
	15:1	PGA070-15A2	70			8.64		76.95		200	400.00	268.88	0.238
		PGB070-15A2	70			8.45		75.24				264.83	0.234
		PGB090-15A2	90			204.75		0.181					
	25:1	PGD064-25A2	64			14.40	128.25	120	240.00	747.50	0.662		
		PGA070-25A2	70							748.13	0.662		
		PGB070-25A2	70							14.08	125.40	736.88	0.652
		PGB090-25A2	90							581.25	0.514		
		PGD090-25A2	90							14.40	128.25	700.00	0.620
	50:1	PGD090-50A2	90			28.80	256.50			60	120.00	2875.00	2.544
		PGD110-50A2	110					2125.00	1.881				
SV2L-204(x)	5:1	PGD064-05A2	64	1.27	11.2	6.03	53.20	600	1200.00	53.75	0.048		
		PGA070-05A2	70							54.33	0.048		
		PGB070-05A2	70							5.91	52.08	50.00	0.044
	PGD064-10A2	64	12.07			106.40	300			600.00	218.80	0.194	
	PGA070-10A2	70									219.40	0.194	
	PGB070-10A2	70									11.81	104.16	202.00
	15:1	PGA070-15A2	70			17.15		151.20	200		400.00	493.88	0.437
		PGB070-15A2	70			16.76		147.84				489.83	0.433
		PGB090-15A2	90			429.75		0.380					
	25:1	PGD064-25A2	64			28.58	252.00	120	240.00	1372.50	1.215		
		PGA070-25A2	70							1373.13	1.215		
		PGB070-25A2	70							27.94	246.40	1361.88	1.205
		PGB090-25A2	90							1206.25	1.068		
		PGD090-25A2	90							28.58	252.00	1325.00	1.173
	50:1	PGD090-50A2	90			57.15	504.00			60	120.00	5375.00	4.757
		PGD110-50A2	110					4625.00	4.093				

* Available load inertia is calculated based on servo motor inertia using the formula: Available Inertia = (5 x Motor Inertia – Gearbox Inertia) x (Gear Ratio)² A 5:1 inertia mismatch is a good target for design purposes. Systems with lower or higher mismatch may be possible, depending on operating conditions.

** This gearbox is NOT a suitable choice at a 5:1 mismatch. If inertia balancing is a selection criteria for your end use, please use a mismatch of 8:1 to 10:1.



Precision Servo Gearboxes

SureGear® Servo Gearbox Selection											
Servo Motor	Gear Ratio	SureGear Gearbox	Frame Size (mm)	Motor Nominal Output Torque		Combo Nominal Output Torque		Nominal Output Speed (rpm)	Max Output Speed (rpm)	Available Load Inertia @ 5:1 Mismatch *	
				N-m	lb-in	N-m	lb-in			kg-cm2	lb-in-s2
SV2L-207(x)	5:1	PGA070-05A3	70	2.39	21.2	11.35	100.70	600	1200.00	186.83	0.165
		PGB090-05A3	90			11.11	98.58			143.75	0.127
		PGD090-05A3	90			11.35	100.70			174.25	0.154
	10:1	PGA090-10A3	90			22.71	201.40	300	600.00	726.00	0.643
		PGB090-10A3	90			22.23	197.16			586.00	0.519
		PGD090-10A3	90			22.71	201.40			722.00	0.639
	15:1	PGA090-15A3	90			32.27	286.20	200	400.00	1669.50	1.478
		PGB090-15A3	90			31.55	279.84			1622.25	1.436
		PGD110-25A3	110			53.78	477.00			4643.75	4.110
	25:1	PGB090-25A3	90			52.58	466.40	120	240.00	4518.75	3.999
		PGD110-25A3	110			53.78	477.00			4281.25	3.789
		PGD110-50A3	110			107.55	954.00			17875.00	15.819
SV2L-210(x)	5:1	PGA090-05A4	90	3.18	28.15	15.11	133.69	600	1000.00	321.25	0.284
		PGB090-05A4	90			14.79	130.88			286.25	0.253
		PGD090-05A4	90			15.11	133.69			319.25	0.283
	10:1	PGA090-10A4	90			30.21	267.38	300	500.00	1296.00	1.147
		PGB090-10A4	90			29.57	261.75			1156.00	1.023
		PGD090-10A4	90			30.21	267.38			1292.00	1.143
	15:1	PGA120-15A4	120			42.93	379.96	200	333.33	2884.50	2.553
		PGB120-15A4	120			41.98	371.52			2475.00	2.190
		PGD110-25A4	110			71.55	633.27			7843.75	6.942
	25:1	PGA120-25A4	120			69.96	619.20	120	200.00	8043.75	7.119
		PGB120-25A4	120			69.96	619.20			6918.75	6.123
		PGD110-50A4	110			143.10	1266.54			32125.00	28.431
SV2M-210(x)	5:1	PGA090-05A5	90	4.77	42.22	22.66	200.54	400.00	600.00	1041.25	0.922
		PGD090-05A5	90			22.18	196.31			1039.25	0.920
		PGB120-05A5	120			22.18	196.31			925.75	0.819
	10:1	PGA090-10A5	90			45.32	401.07	200.00	300.00	4176.00	3.696
		PGD110-10A5	110			44.36	392.63			4172.00	3.692
		PGB120-10A5	120			44.36	392.63			3759.00	3.327
	15:1	PGA120-15A5	120			64.40	569.94	133.33	200.00	9364.50	8.288
		PGB120-15A5	120			62.96	557.28			8955.00	7.925
		PGD110-25A5	110			107.33	949.91			25843.75	22.872
	25:1	PGA120-25A5	120			104.94	928.80	80.00	120.00	26043.75	23.049
		PGB120-25A5	120			104.94	928.80			24918.75	22.053
		PGD110-35A5	110			150.26	1329.87			50653.75	44.829

* Available load inertia is calculated based on servo motor inertia using the formula: Available Inertia = (5 x Motor Inertia – Gearbox Inertia) x (Gear Ratio)² A 5:1 inertia mismatch is a good target for design purposes. Systems with lower or higher mismatch may be possible, depending on operating conditions.



Precision Servo Gearboxes

SureGear® Servo Gearbox Selection											
Servo Motor	Gear Ratio	SureGear Gearbox	Frame Size (mm)	Motor Nominal Output Torque		Combo Nominal Output Torque		Nominal Output Speed (rpm)	Max Output Speed (rpm)	Available Load Inertia @ 5:1 Mismatch *	
				N-m	lb-in	N-m	lb-in			kg-cm2	lb-in-s2
SV2M-215(x)	5:1	PGA090-05A5	90	7.16	63.37	34.01	301.01	400.00	600.00	1390.00	1.230
		PGD090-05A5	90							1388.00	1.228
		PGB120-05A5	120							1274.50	1.128
	10:1	PGA090-10A5	90			68.02	602.03	200.00	300.00	5571.00	4.930
		PGD110-10A5	110							5567.00	4.927
		PGB120-10A5	120							5154.00	4.561
	15:1	PGA120-15A5	120			96.66	855.51	133.33	200.00	12503.25	11.065
		PGB120-15A5	120							12093.75	10.703
		PGD110-25A5	110							34562.50	30.588
	25:1	PGA120-25A5	120			161.10	1425.86	80.00	120.00	34762.50	30.765
		PGB120-25A5	120							33637.50	29.769
		PGD110-35A5	110							225.54	1996.20
SV2M-220(x)	5:1	PGD110-05A6	110	9.55	84.52	45.36	401.49	400.00	600.00	4280.00	3.788
		PGA120-05A6	120							4297.50	3.803
		PGB120-05A6	120							4212.00	3.728
		PGB155-05A6	155							3914.75	3.465
	10:1	PGD110-10A6	110			90.73	802.98	200.00	300.00	17240.00	15.257
		PGA120-10A6	120							17255.00	15.271
		PGB120-10A6	120							16904.00	14.960
		PGB155-10A6	155							15884.00	14.057
	15:1	PGA155-15A6	155			128.93	1141.08	133.33	200.00	38745.00	34.289
		PGB155-15A6	155							126.06	1115.73
	25:1	PGA155-25A6	155			214.88	1901.80	80.00	120.00	107750.00	95.359
		PGB155-25A6	155							210.10	1859.54
SV2M-230(x)	5:1	PGD110-05A6	110	17.55	155.33	83.36	737.80	340.00	600.00	6817.50	6.033
		PGA120-05A6	120							6835.00	6.049
		PGB120-05A6	120							6749.50	5.973
		PGB155-05A6	155							6452.25	5.710
	10:1	PGD110-10A6	110			166.73	1475.68	170.00	300.00	27390.00	24.240
		PGA120-10A6	120							27405.00	24.253
		PGB120-10A6	120							27054.00	23.943
		PGB155-10A6	155							26034.00	23.040
	15:1	PGA155-15A6	155			236.93	2097.01	113.33	200.00	61582.50	54.501
		PGB155-15A6	155							231.66	2050.36
	25:1	PGA155-25A6	155			394.88	3494.98	68.00	120.00	171187.50	151.501
		PGB155-25A6	155							386.10	3417.27

* Available load inertia is calculated based on servo motor inertia using the formula: Available Inertia = (5 x Motor Inertia – Gearbox Inertia) x (Gear Ratio)² A 5:1 inertia mismatch is a good target for design purposes. Systems with lower or higher mismatch may be possible, depending on operating conditions.



Precision Servo Gearboxes

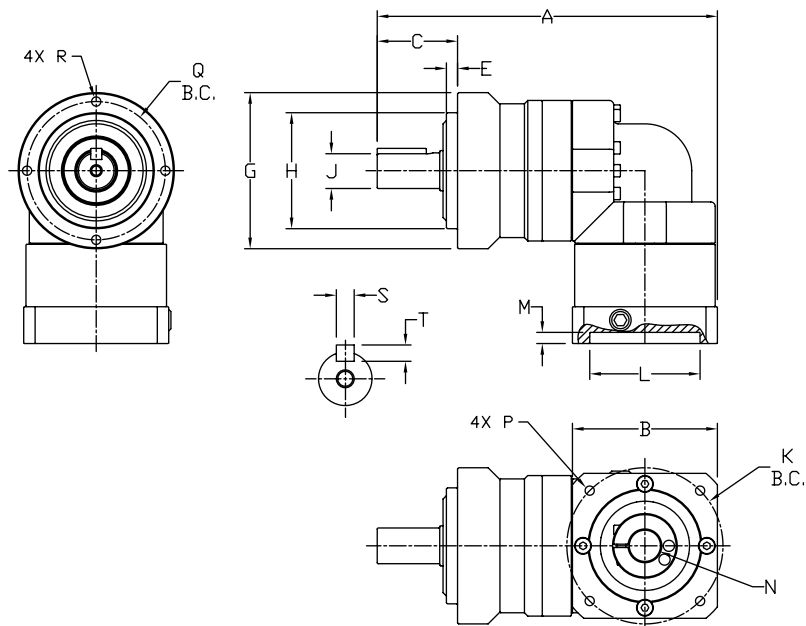
Pricing & Specifications – Right-Angle Shaft PGB Series

SureGear® Precision Servo Gearboxes – Right-Angle Shaft PGB Series																		
Part Number	Price	Frame Size (mm)	Ratio	Reduction	Nominal Output Torque (N·m [lb-in])	Max. Acceleration Torque (N·m [lb-in])	Emergency Stop Torque (N·m [lb-in])	Backlash (arc-min)	Nominal Input Speed (rpm)	Max. Input Speed (rpm)	Allowable Radial Load (N [lb])	Allowable Thrust Load (N [lb])	Moment of Inertia (kg-cm ²)	Efficiency (%)	Max. Housing Temperature	Approx Weight (kg [lb])	Environmental Rating	Fits SureServo Servo Motor (SV & SV2)
PGB070-05A1	\$788.00	70	5:1	double	22 [195]	40 [354]	80 [708]	6	3000	6000	510 [115]	390 [88]	0.250	90 °C [194 °F]	1.9 [4.2]	IP55	SV(2)L-201(B)	
PGB070-10A1	\$788.00		10:1	double	16 [142]	32 [283]	65 [575]				640 [144]	530 [119]	0.230					
PGB070-15A1	\$997.00		15:1	triple	16 [142]	32 [283]	65 [575]	740 [166]			630 [142]	0.073						
PGB070-25A1	\$997.00		25:1	triple	24 [212]	45 [398]	90 [797]	870 [196]			790 [178]	0.071						
PGB070-05A2	\$788.00		5:1	double	22 [195]	40 [354]	80 [708]	510 [115]			390 [88]	0.320						
PGB070-10A2	\$788.00		10:1	double	16 [142]	32 [283]	65 [575]	640 [144]			530 [119]	0.300						
PGB070-15A2	\$997.00		15:1	triple	16 [142]	32 [283]	65 [575]	740 [166]			630 [142]	0.118						
PGB070-25A2	\$997.00		25:1	triple	24 [212]	45 [398]	90 [797]	870 [196]			790 [178]	0.115						
PGB090-15A2	\$1,217.00	90	15:1	triple	45 [398]	65 [575]	170 [1505]	9	3000	6000	1400 [314]	1900 [427]	0.410	90 °C [194 °F]	4.3 [9.5]	IP55	SV(2)L-202(B) SV(2)L-204(B)	
PGB090-25A2	\$1,217.00		25:1	triple	65 [575]	110 [974]	220 [1947]				1600 [360]	2200 [495]	0.400					
PGB090-05A3	\$932.00		5:1	double	65 [575]	90 [797]	220 [1947]	960 [216]			1200 [270]	2.130						
PGB090-10A3	\$932.00		10:1	double	45 [398]	65 [575]	170 [1505]	1200 [270]			1600 [360]	2.020						
PGB090-15A3	\$1,217.00		15:1	triple	45 [398]	65 [575]	170 [1505]	1400 [314]			1900 [427]	0.600						
PGB090-25A3	\$1,217.00		25:1	triple	65 [575]	110 [974]	220 [1947]	1600 [360]			2200 [495]	0.590						
PGB090-05A4	\$932.00		5:1	double	65 [575]	90 [797]	220 [1947]	960 [216]			1200 [270]	4.260						
PGB090-10A4	\$932.00		10:1	double	45 [398]	65 [575]	170 [1505]	1200 [270]			1600 [360]	4.150						
PGB120-15A4	\$1,512.00	120	15:1	triple	110 [974]	200 [1770]	450 [3983]	9	2000	4000	2300 [517]	3000 [674]	4.700	90 °C [194 °F]	10 [22]	IP55	SV(2)L-210(B)	
PGB120-25A4	\$1,512.00		25:1	triple	150 [1328]	300 [2655]	550 [4868]				2700 [607]	3700 [832]	4.640					
PGB120-05A5	\$1,217.00		5:1	double	120 [1062]	240 [2124]	500 [4425]	1600 [360]			1900 [427]	6.610						
PGB120-10A5	\$1,217.00		10:1	double	110 [974]	200 [1770]	450 [3983]	2000 [450]			2500 [562]	6.050						
PGB120-15A5	\$1,512.00		15:1	triple	110 [974]	200 [1770]	450 [3983]	2300 [517]			3000 [674]	4.700						
PGB120-25A5	\$1,512.00		25:1	triple	150 [1328]	300 [2655]	550 [4868]	2700 [607]			3700 [832]	4.640						
PGB120-05A6	\$1,217.00		5:1	double	120 [1062]	240 [2124]	500 [4425]	1600 [360]			1900 [427]	13.690						
PGB120-10A6	\$1,217.00		10:1	double	110 [974]	200 [1770]	450 [3983]	2000 [450]			2500 [562]	13.120						
PGB155-15A6	\$1,770.00	155	15:1	triple	200 [1770]	400 [3540]	750 [6638]	9	2000	4000	5400 [1214]	4900 [1102]	15.070	90 °C [194 °F]	20.4 [45.0]	IP55	SV(2)M-220(B)	
PGB155-25A6	\$1,770.00		25:1	triple	300 [2655]	600 [5310]	1100 [9736]				6400 [1439]	6100 [1371]	14.820					
PGB155-05A6	\$1,401.00		5:1	double	200 [1770]	400 [3540]	1100 [9736]	3800 [854]			3000 [674]	21.280						
PGB155-10A6	\$1,401.00		10:1	double	200 [1770]	400 [3540]	750 [6638]	4700 [1057]			4100 [922]	19.030						



Precision Servo Gearboxes

Dimensions – Right-Angle Shaft PGB Series



SureGear PGB Series Right-Angle Shaft Gearboxes Dimension Drawing

SureGear® Precision Servo Gearbox Dimensions – Right-Angle Shaft PGA Series (dimensions = mm [in])																
Part Number	A	B	C	E	G	H	J	K	L	M	N	P	Q	R	S	T
PGB070-05A1	151.5 [5.96]	52.0 [2.05]	36.0 [1.42]	5.0 [0.20]	Ø70.0 [Ø2.76]	Ø52.0 [Ø2.05]	Ø16.0 [Ø0.63]	Ø46.0 [Ø1.81]	Ø30.0 [Ø1.18]	5.0 [0.20]	Ø8.0 [Ø0.31]	M4-0.7x9	Ø62.0 [Ø2.44]	M5-0.8x10	5.0 [0.20]	5.0 [0.20]
PGB070-10A1																
PGB070-05A2	163.5 [6.44]	65.0 [2.56]	36.0 [1.42]	5.0 [0.20]	Ø70.0 [Ø2.76]	Ø52.0 [Ø2.05]	Ø16.0 [Ø0.63]	Ø70.0 [Ø2.76]	Ø50.0 [Ø1.97]	5.0 [0.20]	Ø14.0 [Ø0.55]	M5-0.8x11	Ø62.0 [Ø2.44]	M5-0.8x10	5.0 [0.20]	5.0 [0.20]
PGB070-10A2																
PGB070-15A1	158.0 [6.22]	52.0 [2.05]	36.0 [1.42]	5.0 [0.20]	Ø70.0 [Ø2.76]	Ø52.0 [Ø2.05]	Ø16.0 [Ø0.63]	Ø46.0 [Ø1.81]	Ø30.0 [Ø1.18]	5.0 [0.20]	Ø8.0 [Ø0.31]	M4-0.7x9	Ø62.0 [Ø2.44]	M5-0.8x10	5.0 [0.20]	5.0 [0.20]
PGB070-25A1																
PGB070-15A2	204.5 [8.05]	65.0 [2.56]	36.0 [1.42]	5.0 [0.20]	Ø70.0 [Ø2.76]	Ø52.0 [Ø2.05]	Ø16.0 [Ø0.63]	Ø70.0 [Ø2.76]	Ø50.0 [Ø1.97]	5.0 [0.20]	Ø14.0 [Ø0.55]	M5-0.8x11	Ø62.0 [Ø2.44]	M5-0.8x10	5.0 [0.20]	5.0 [0.20]
PGB070-25A2																
PGB090-15A2	205.5 [8.09]	80.0 [3.15]	46.0 [1.81]	7.0 [0.28]	Ø90.0 [Ø3.54]	Ø68.0 [Ø2.68]	Ø22.0 [Ø0.87]	Ø90.0 [Ø3.54]	Ø70.0 [Ø2.76]	6.0 [0.24]	Ø19.0 [Ø0.75]	M6-1.0x13	Ø80.0 [Ø3.15]	M6-1.0x12	6.0 [0.24]	6.0 [0.24]
PGB090-10A3																
PGB090-05A3	210.5 [8.29]	80.0 [3.15]	46.0 [1.81]	7.0 [0.28]	Ø90.0 [Ø3.54]	Ø68.0 [Ø2.68]	Ø22.0 [Ø0.87]	Ø90.0 [Ø3.54]	Ø70.0 [Ø2.76]	6.0 [0.24]	Ø19.0 [Ø0.75]	M6-1.0x13	Ø80.0 [Ø3.15]	M6-1.0x12	6.0 [0.24]	6.0 [0.24]
PGB090-10A3																
PGB090-05A4	205.5 [8.09]	100.0 [3.94]	46.0 [1.81]	7.0 [0.28]	Ø90.0 [Ø3.54]	Ø68.0 [Ø2.68]	Ø22.0 [Ø0.87]	Ø115.0 [Ø4.53]	Ø95.0 [Ø3.74]	6.0 [0.24]	Ø19.0 [Ø0.75]	M6-1.0x13	Ø80.0 [Ø3.15]	M6-1.0x12	6.0 [0.24]	6.0 [0.24]
PGB090-10A4																
PGB120-15A4	272.0 [10.71]	130.0 [5.12]	70.0 [2.76]	9.0 [0.35]	Ø120.0 [Ø4.72]	Ø90.0 [Ø3.54]	Ø32.0 [Ø1.26]	Ø145.0 [Ø5.71]	Ø110.0 [Ø4.33]	8.0 [0.31]	Ø22.0 * [Ø0.87]	M8-1.25x17	Ø108.0 [Ø4.25]	M8-1.25x16	10.0 [0.39]	8.0 [0.31]
PGB120-05A4																
PGB120-15A5	272.0 [10.71]	130.0 [5.12]	70.0 [2.76]	9.0 [0.35]	Ø120.0 [Ø4.72]	Ø90.0 [Ø3.54]	Ø32.0 [Ø1.26]	Ø145.0 [Ø5.71]	Ø110.0 [Ø4.33]	8.0 [0.31]	Ø22.0 * [Ø0.87]	M8-1.25x17	Ø108.0 [Ø4.25]	M8-1.25x16	10.0 [0.39]	8.0 [0.31]
PGB120-25A4																
PGB120-05A5	268.5 [10.57]	180.0 [7.09]	70.0 [2.76]	9.0 [0.35]	Ø120.0 [Ø4.72]	Ø90.0 [Ø3.54]	Ø32.0 [Ø1.26]	Ø145.0 [Ø5.71]	Ø110.0 [Ø4.33]	8.0 [0.31]	Ø22.0 * [Ø0.87]	M8-1.25x17	Ø108.0 [Ø4.25]	M8-1.25x16	10.0 [0.39]	8.0 [0.31]
PGB120-10A5																
PGB120-15A6	341.0 [13.43]	180.0 [7.09]	97.0 [3.82]	12.0 [0.47]	Ø155.0 [Ø6.10]	Ø120.0 [Ø4.72]	Ø40.0 [Ø1.57]	Ø200.0 [Ø7.87]	Ø114.0 [Ø4.50]	8.0 [0.31]	Ø35.0 * [Ø1.38]	M12-1.75x25	Ø140.0 [Ø5.51]	M10-1.5x20	12.0 [0.47]	8.0 [0.31]
PGB120-25A6																
PGB155-05A6	364.0 [14.33]	180.0 [7.09]	97.0 [3.82]	12.0 [0.47]	Ø155.0 [Ø6.10]	Ø120.0 [Ø4.72]	Ø40.0 [Ø1.57]	Ø200.0 [Ø7.87]	Ø114.0 [Ø4.50]	8.0 [0.31]	Ø35.0 * [Ø1.38]	M12-1.75x25	Ø140.0 [Ø5.51]	M10-1.5x20	12.0 [0.47]	8.0 [0.31]
PGB155-10A6																
PGB155-15A6	364.0 [14.33]	180.0 [7.09]	97.0 [3.82]	12.0 [0.47]	Ø155.0 [Ø6.10]	Ø120.0 [Ø4.72]	Ø40.0 [Ø1.57]	Ø200.0 [Ø7.87]	Ø114.0 [Ø4.50]	8.0 [0.31]	Ø35.0 * [Ø1.38]	M12-1.75x25	Ø140.0 [Ø5.51]	M10-1.5x20	12.0 [0.47]	8.0 [0.31]
PGB155-25A6																

* Dimension with supplied bushing

NOTE: See our website: www.AutomationDirect.com for complete engineering drawings.



Precision Servo Gearboxes

SureGear® Servo Gearbox Replacement Parts



SureGear® Precision Servo Gearboxes – Replacement Parts		
Part Number	Price	Description
<u>PG050-KEY</u>	\$4.50	Output Shaft Key, replacement, 4 x 4 x 14 mm, for SureGear PGA050 series gearboxes.
<u>PG070-KEY</u>	\$4.50	Output Shaft Key, replacement, 5 x 5 x 22 mm, for SureGear PGA070 and PGB070 series gearboxes.
<u>PG090-KEY</u>	\$4.50	Output Shaft Key, replacement, 6 x 6 x 28 mm, for SureGear PGA090 and PGB090 series gearboxes.
<u>PG120-KEY</u>	\$4.50	Output Shaft Key, replacement, 10 x 8 x 45 mm, for SureGear PGA120 and PGB120 series gearboxes.
<u>PG155-KEY</u>	\$4.50	Output Shaft Key, replacement, 12 x 8 x 65 mm, for SureGear PGA155 and PGB155 series gearboxes.
<u>PGA4-A5-BUSH</u>	\$22.50	Input Shaft Bushing, replacement, 28 x 22 x 30.5 mm, for all SureGear gearboxes using SV(2)L-210(B) and SV(2)M-210(B) SureServo motors.
<u>PGA6-BUSH</u>	\$22.50	Input Shaft Bushing, replacement, 38 x 35 x 36 mm, for all SureGear gearboxes using SV(2)M-220(B) and SV(2)M-230(B) SureServo motors.