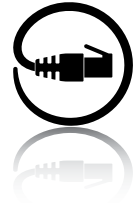


Stride SE Series Unmanaged Industrial Ethernet Switches and Media Converters



Features

- Wide temp range option
- Integrated panel mounting option
- 12, 24 VDC redundant input
- IP40 metal case models
 - IP30 plastic case models
- Haz Loc
- 5-year warranty



IECEX



RoHS Compliant

Plastic Case Switches

| Stride SE Series Unmanaged Models | | | | | | |
|-----------------------------------|----------|--------|-----------------|-------------|---------------------------------|-------------------------------|
| Part Number | Price | 10/100 | Fiber Connector | Input Power | Operating Temp | Agency Approvals |
| <u>SE-SW5U</u> | \$129.00 | 5 | - | 2.0 W | -10 to +60°C [+14 to +140°F] | UL/cUL 508, Haz Loc, CE |
| <u>SE-SW8U</u> | \$219.00 | 8 | - | 4.0 W | | |
| <u>SE-SW5U-ST</u> | \$249.00 | 4 | 1 ST | 3.0 W | | |
| <u>SE-SW5U-SC</u> | \$239.00 | | 1 SC | | | |
| <u>SE-SW9U-ST</u> | \$329.00 | 8 | 1 ST | 5.0 W | | |
| <u>SE-MC2U-ST</u> | \$238.00 | 1 | 1 ST | 2.0 W | | |
| <u>SE-MC2U-SC</u> | \$235.00 | | 1 SC | | | |

Metal Case Switches

| Stride SE Series Unmanaged Models | | | | | | |
|--------------------------------------|----------|--------|-----------------|-------------|---------------------------------|-------------------------------|
| Part Number | Price | 10/100 | Fiber Connector | Input Power | Operating Temp | Agency Approvals |
| <u>SE-SW5U-WT</u> | \$231.00 | 5 | - | 2.0 W | -40 to +85°C [-40 to +185°F] | UL/cUL 508, Haz Loc, CE |
| <u>SE-SW8U-WT</u> | \$299.00 | 8 | - | 4.0 W | | |
| <u>SE-SW5U-ST-WT</u> | \$329.00 | 4 | 1 ST | 3.0 W | | |
| <u>SE-SW5U-SC-WT</u> | \$329.00 | 4 | 1 SC | | | |
| <u>SE-SW9U-ST-WT</u> | \$419.00 | 8 | 1 ST | 5.0 W | | |
| <u>SE-SW9U-SC-WT</u> | \$409.00 | 8 | 1 SC | | | |

Stride SE Series Unmanaged Industrial Ethernet Switches and Media Converters

| General Specifications | | |
|---|---|--|
| Ethernet Switch Type | Up to 9 ports | |
| Operating Mode | Store and forward wire speed switching, non-blocking | |
| Devices Supported | All IEEE 802.3 compliant devices are supported | |
| Standards | IEEE 802.3, 802.3u, 802.3x | |
| MAC Addresses | 1024 addresses | |
| Memory Bandwidth | 3.2 Gbps | |
| Latency for 10 Mbps ports | 16 μ s + frame time (typical) | |
| Latency for 100 Mbps ports | 5 μ s + frame time (typical) | |
| Power Input | Redundant Input Terminals | |
| Input Power (typical with all ports active at 100 Mbps) | SE-MC2U-ST SE-MC2U-SC SE-SW5U SE-SW5U-WT | 2.0 W |
| | SE-SW5U-ST SE-SW5U-SC SE-SW5U-ST-WT SE-SW5U-SC-WT | 3.0 W |
| | SE-SW8U SE-SW8U-WT | 4.0 W |
| | SE-SW9U-ST SE-SW9U-ST-WT SE-SW9U-SC-WT | 5.0 W |
| Input Voltage | 10-30 VDC (continuous)—Class 2 Power Supply | |
| Reverse Power Protection | Yes | |
| Transient Protection | 15,000 watts peak | |
| Spike Protection | 5,000 watts (10x for 10 us) | |
| Ethernet Isolation | 1500 VRMS 1 minute | |
| Operating Temperature Range | SE-MC2U-ST SE-MC2U-SC SE-SW5U SE-SW8U SE-SW5U-ST SE-SW5U-SC SE-SW9U-ST | -10 to +60°C [+14 to +140°F], cold startup at -10°C [+14°F] |
| | SE-SW5U-WT SE-SW8U-WT SE-SW5U-ST-WT SE-SW5U-SC-WT SE-SW9U-ST-WT SE-SW9U-SC-WT | -40 to +85°C [-40 to +185°F], cold startup at -40°C [-40°F] |
| Storage Temperature Range | -40 to +85°C [-40 to +185°F] | |
| Humidity (non-condensing) | 5 to 95% RH | |
| Environmental Air | No corrosive gasses permitted. For use in Pollution Degree 2 environment | |
| Vibration and Shock | IEC60068-2 and -27 | |
| EMI Emissions | FCC part 15, ICES-003, EN55022 | |
| EMC Immunity | IEC61326-1 | |
| RoHS and WEEE | RoHS (Pb free) and WEEE compliant | |
| Agency Approvals | UL/cUL 508, CSA C22 per EN61010-1, UL HazLoc (Class 1, Div. 2, Groups A, B, C, D) (UL file #E200031), CSA C 22.2/213/EN60079-15 (Zone 2, Category 3), CE (ATEX) | |

| General Specifications Cont'd | | |
|---------------------------------|--|--------------------|
| Packaging and Protection | SE-MC2U-ST SE-MC2U-SC SE-SW5U SE-SW8U SE-SW5U-ST SE-SW5U-SC SE-SW9U-ST | UL94VO Lexan, IP30 |
| | SE-SW5U-WT SE-SW8U-WT SE-SW5U-ST-WT SE-SW5U-SC-WT SE-SW9U-ST-WT SE-SW9U-SC-WT | Metal case, IP40 |

| Copper RJ45 Ports: (10/100BaseT) | |
|----------------------------------|---|
| 10/100BaseT ports | Shielded RJ45 |
| Protocols Supported | All standard IEEE 802.3 |
| Ethernet Compliance | IEEE 802.3, 802.3u, 802.3x |
| Auto-Crossover | Yes, allows you to use straight-through or crossover wired cables |
| Auto-Sensing Operation | Yes, full and half duplex |
| Auto-Negotiating | Yes, 10BaseT and 100BaseT |
| Auto-Polarity | Yes, on the TD and RD pair |
| Flow Control | Automatic |
| Ethernet Isolation | 1500 VRMS 1 minute |
| Plug and Play | Yes |
| Cable Requirements | Twisted pair (Cat5e or better) (shielded recommended) |
| Max. Cable Distance | 100 meters |

| Fiber Port: (100BaseFX multimode) | |
|--|--|
| 100BaseFX Ports | 1 |
| Fiber Port Mode | Multimode (mm) |
| Fiber Port Connector | ST – models SE-XXXX-ST and SE-XXXX-ST-WT SC – models SE-XXXX-SC and SE-XXXX-SC-WT |
| Optimal Fiber Cable | 50/125 or 62.5/125 μ m |
| Center Wavelength | 1300 nm |
| Multimode | Links up to 4 km typ.; > Transmitter power (dBm): -21 min, -17 typ, -14 max > Receiver sensitivity (dBm): -34 typ, -31 max |
| Nominal Max. Distance (full duplex) | 4 km |
| Ethernet Compliance | 100BaseFX |
| Eye Safety (laser) | IEC 60825-1, Class 1; FDA 21 CFR 1040.10 and 1040.11 |

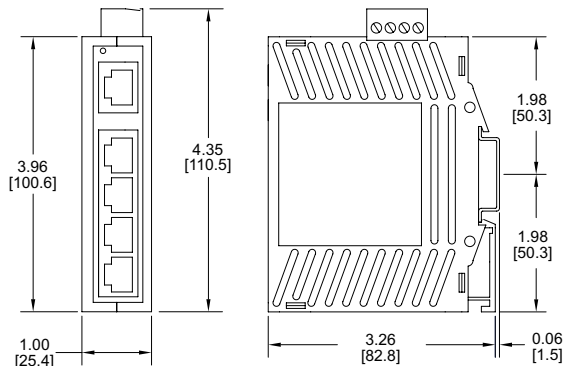
Complete documentation

Documentation can be downloaded from www.automationdirect.com.

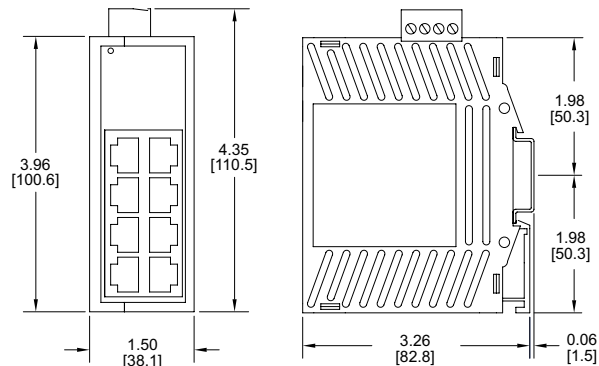
Stride SE Series Unmanaged Industrial Ethernet Switches and Media Converters

Dimensions

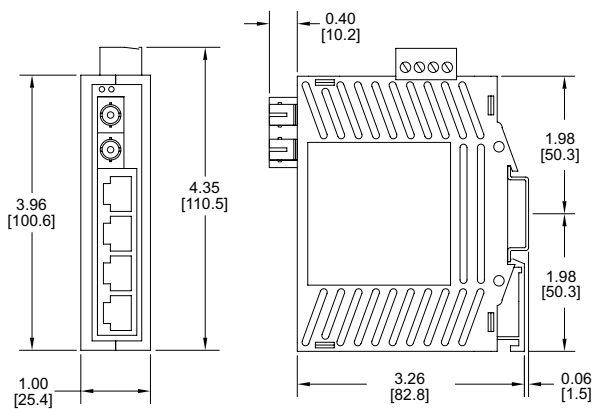
Inches [mm]



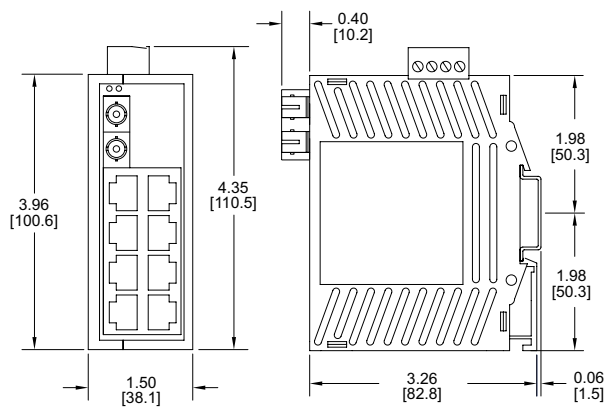
SE-SW5U



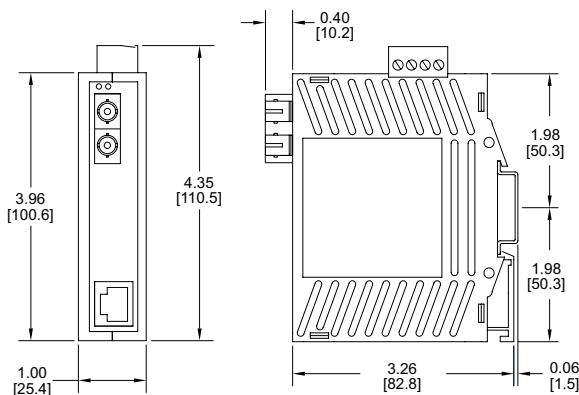
SE-SW8U



SE-SW5U-SC
SE-SW5U-ST



SE-SW9U-ST



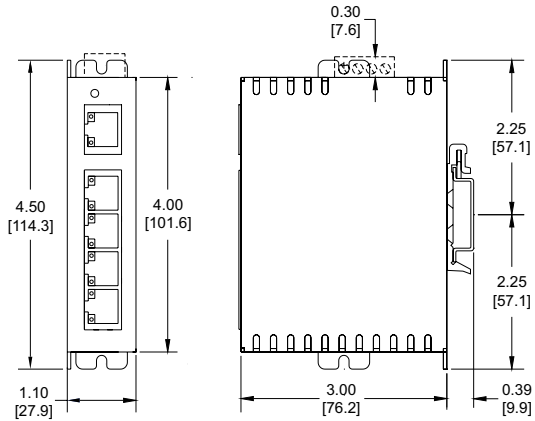
SE-MC2U-SC
SE-MC2U-ST

See our website: www.AutomationDirect.com for complete engineering drawings.

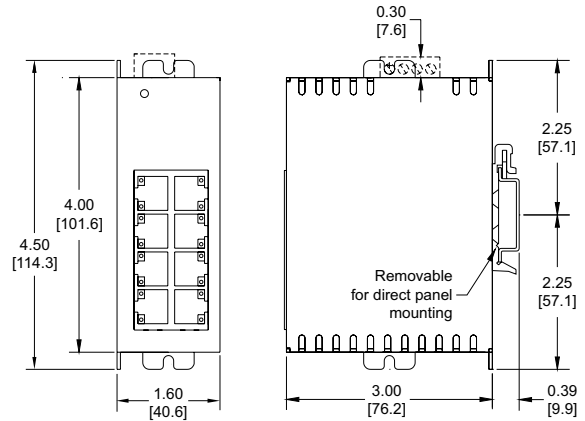
Stride SE Series Unmanaged Industrial Ethernet Switches and Media Converters

Dimensions

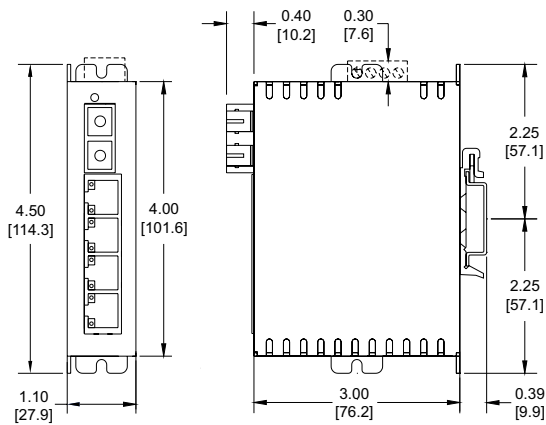
Inches [mm]



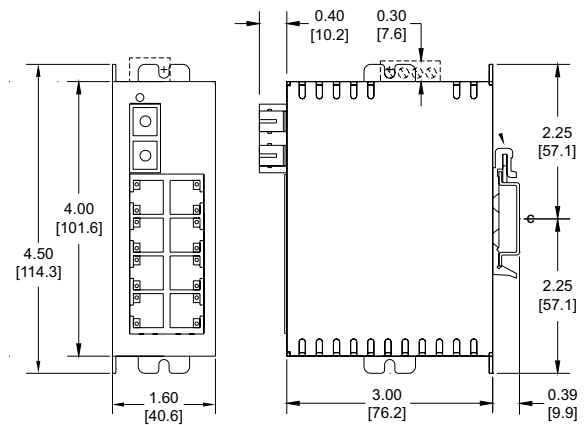
SE-SW5U-WT



SE-SW8U-WT



SE-SW5U-SC-WT
SE-SW5U-ST-WT



SE-SW9U-SC-WT
SE-SW9U-ST-WT

See our website: www.AutomationDirect.com for complete engineering drawings.

Stride Unmanaged Industrial Ethernet Switches

Features

- Reliable connectivity
- Industrially hardened
- Simple installation
- For detailed specifications on all models, see the specific series pages



| | | SE Series | SE3 Series DIN Rail | SE3 Series IP67 |
|--|------------------------------------|------------------------------|------------------------------|------------------------------|
| Price | | | | |
| | | starting at \$129.00 | starting at \$72.00 | starting at \$279.00 |
| Broadcast Storm Protection | | | | |
| | | — | — | — |
| Industrial Temperature Ranges | | | | |
| | Standard Temp | -10 to +60°C [14 to 140°F] | -10 to +65°C [14 to 149°F] | — |
| | Wide Temp | -40 to +85°C [-40 to +185°F] | -40 to +75°C [-40 to +167°F] | -40 to +75°C [-40 to +167°F] |
| Port Connectivity | | | | |
| | Port Count | 2 to 9 | 5 to 16 | 5 |
| | RJ45 Port Speed | up to 100 Mbps | up to 1000 Mbps | — |
| | M12 Port Speed | — | — | up to 100 Mbps |
| | Fiber Optic Ports | ✓ | ✓ | — |
| | PoE+ Ports | — | ✓ | — |
| | SFP Ports | — | ✓ | — |
| Mounting | | | | |
| | DIN Rail Mount | ✓ | ✓ | ✓ |
| | Panel Mount | ✓ | ✓ | ✓ |
| Input Power | | | | |
| | Redundant Power Inputs | ✓ | ✓ | ✓ |
| | Reverse Polarity Protection | ✓ | ✓ | ✓ |
| | Power LED | ✓ | ✓ | ✓ |
| Agency Approvals | | | | |
| | UL508 or UL61010 | ✓ | ✓ | ✓ |
| | Haz Loc—Class 1 Div 2 | ✓ | ✓ (certain models) | — |
| | IECEX | ✓ | — | — |
| | ATEX Zone 2 | ✓ | — | — |
| | CE | ✓ | ✓ | ✓ |
| | EN50155 & EN50121 | — | — | — |
| Warranty | | | | |
| | | 5 years | 5 years | 5 years |
| Activity, Link & Speed LEDs | | | | |
| | | ✓ | ✓ | ✓ |