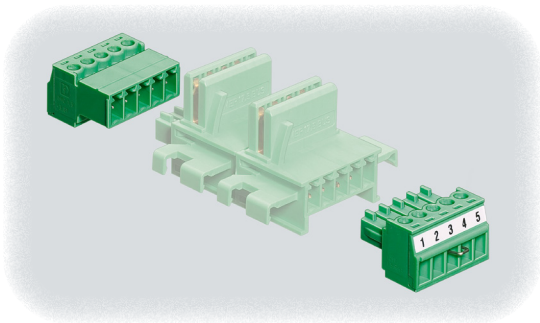


STAHL Intrinsically Safe Isolators Accessories – pac-Bus System

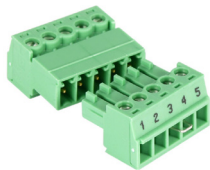


Benefits of Using the pac-Bus System

- Quick, easy wiring
- Can be installed on standard DIN rail without tools by simply snapping into place
- Can be expanded at any time with additional pac-Bus units
- Suitable for industrial environments subject to vibration
- Optional power supply module 9193 enables refused redundant 24VDC supply and fault signalization

STAHL Intrinsically Safe Isolators Accessories (pac-Bus System) Selection Guide

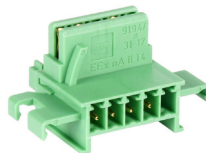
| Part Number | Price | Description | Weight | Drawing |
|-----------------------|----------|---|---------------|---------------------|
| 9194-50-01 | \$22.50 | End terminal set for pac-Bus system | 0.29 oz [8 g] | PDF |
| 9294-31-12 | \$29.50 | pac-Bus terminal for 92xx (12.5 mm [0.49 in] width) isolators | 0.16 oz [5 g] | PDF |
| 9194-31-17 | \$22.50 | pac-Bus terminal for 91xx (17.6 mm [0.69 in] width) isolators | 0.16 oz [5 g] | PDF |
| 9193/21-11-11S | \$269.00 | pac-Bus supply module | 0.4 lb [180g] | PDF |
| 111412 | \$40.00 | Qty 10 spare fuses for use with pac-Bus supply module | 0.07 lb [2g] | PDF |



9194-50-01



9294-31-12



9194-31-17

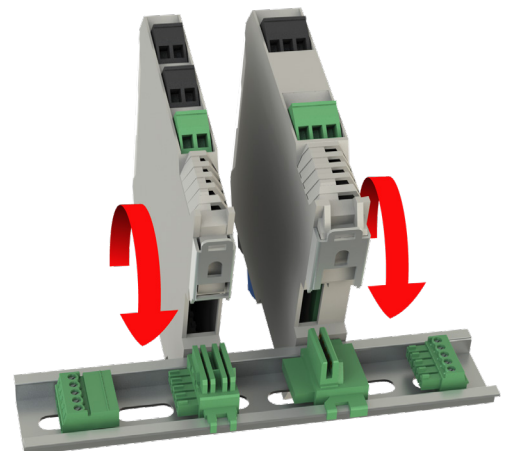
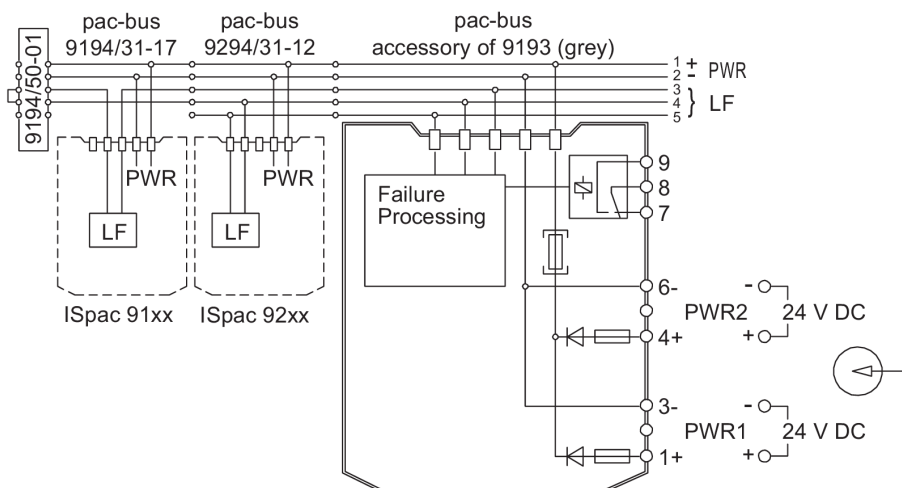


9193/21-11-11S



111412

Connection Diagram



Refer to installation instructions for details

STAHL Intrinsically Safe Isolators Accessories – pac-Bus System



| STAHL pac-Bus Supply Module Specifications | | |
|--|---|---|
| | | <u>9193/21-11-11S</u> |
| Explosion Protection | Installation Location (per NEC 500) | Class I, Division 2 |
| | Ex Interface (for intrinsically safe interface) (per NEC 500) | Class I, II, III Division 1 or 2 |
| | Agency Approvals | ATEX (BVS), Canada (FM), China (NEPSI), IECEx (BVS), India (PESO), USA (FM) |
| Electrical Data | Power Supply | 24VDC 4A, primary and redundant |
| | Auxiliary Power Voltage Range | 18.0 to 31.2 VDC |
| | Max Power Dissipation | 2.5 W |
| Ambient Conditions | Operating Temperature | -40°C to 55°C [-40°F to 131°F] |
| | Storage Temperature | -40°C to 80°C [-40°F to 176°F] |
| Mechanical Data | Degree of Protection | IP20 |
| | Mounting Type | DIN rail |
| | Wire Gauge Range | 16AWG for terminals 12AWG for ground connections |

Safety Products



Warning: Safety products sold by AutomationDirect are Safety components only. The purchaser/installer is solely responsible for the application of these components and ensuring all necessary steps have been taken to assure each application and use meets all performance and applicable safety requirements and/or local, national and/or international safety codes as required by the application. AutomationDirect cannot certify that our products, used solely or in conjunction with other AutomationDirect or other vendors' products, will assure safety for any application. Any person using or applying any products sold by AutomationDirect is responsible for learning the safety requirements for their individual application and applying them, and therefore assumes all risks, and accepts full and complete responsibility, for the selection and suitability of the product for their respective application.

AutomationDirect does not provide design or consulting services, and cannot advise whether any specific application or use of our products would ensure compliance with the safety requirements for any application.