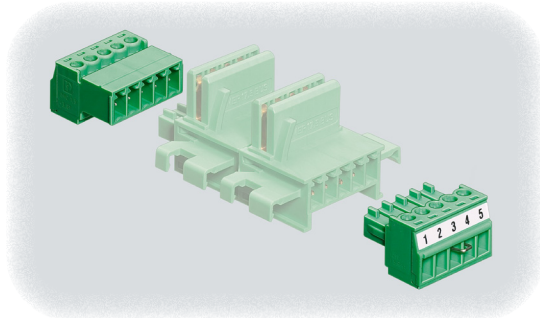


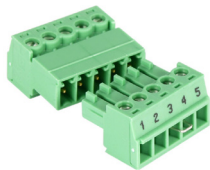
# STAHL Intrinsicly Safe Isolators Accessories – pac-Bus System



## Benefits of Using the pac-Bus System

- Quick, easy wiring
- Can be installed on standard DIN rail without tools by simply snapping into place
- Can be expanded at any time with additional pac-Bus units
- Suitable for industrial environments subject to vibration
- Optional power supply module 9193 enables refused redundant 24VDC supply and fault signalization

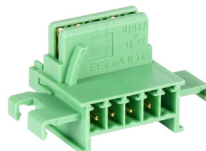
STAHL Intrinsicly Safe Isolators Accessories (pac-Bus System) Selection Guide				
Part Number	Price	Description	Weight	Drawing
<a href="#">9194-50-01</a>	\$22.50	End terminal set for pac-Bus system	0.29 oz [8 g]	<a href="#">PDF</a>
<a href="#">9294-31-12</a>	\$29.50	pac-Bus terminal for 92xx (12.5 mm [0.49 in] width) isolators	0.16 oz [5 g]	<a href="#">PDF</a>
<a href="#">9194-31-17</a>	\$22.50	pac-Bus terminal for 91xx (17.6 mm [0.69 in] width) isolators	0.16 oz [5 g]	<a href="#">PDF</a>
<a href="#">9193/21-11-11S</a>	\$269.00	pac-Bus supply module	0.4 lb [180g]	<a href="#">PDF</a>
<a href="#">111412</a>	\$40.00	Qty 10 spare fuses for use with pac-Bus supply module	0.07 lb [2g]	<a href="#">PDF</a>



[9194-50-01](#)



[9294-31-12](#)



[9194-31-17](#)

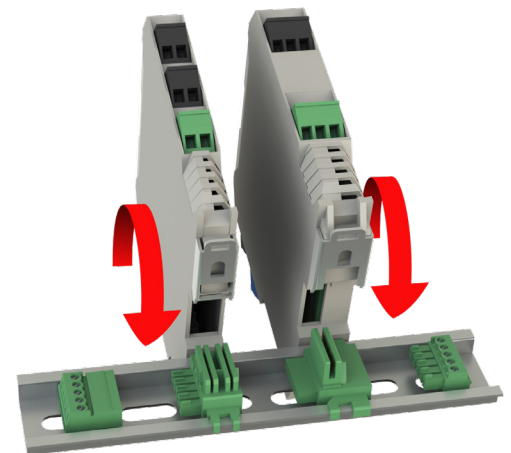
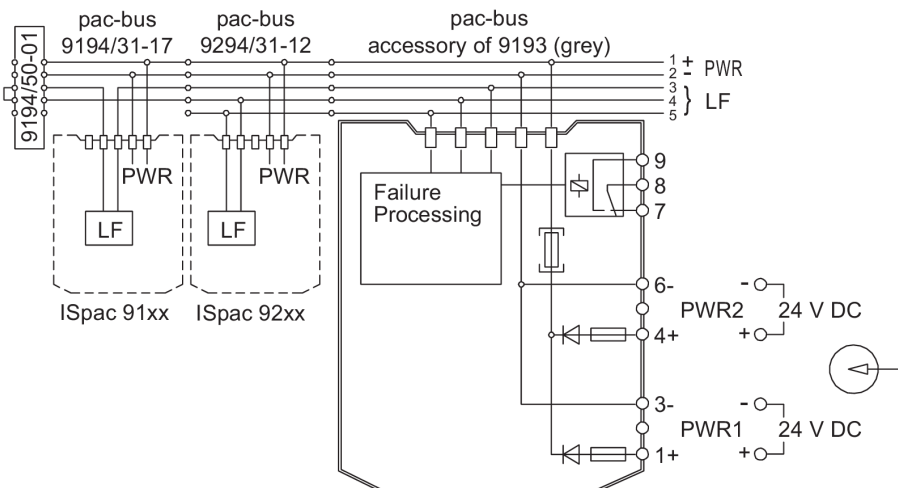


[9193/21-11-11S](#)



[111412](#)

## Connection Diagram



Refer to installation instructions for details

# STAHL Intrinsicly Safe Isolators Accessories – pac-Bus System



STAHL pac-Bus Supply Module Specifications		
		<b><u>9002-77-093-300001</u></b>
<b>Explosion Protection</b>	Installation Location (per NEC 500)	Class I, Division 2
	Ex Interface (for intrinsically safe interface) (per NEC 500)	Class I, II, III Division 1 or 2
	Agency Approvals	ATEX (BVS), Canada (FM), China (NEPSI), IECEx (BVS), India (PESO), USA (FM)
<b>Electrical Data</b>	Power Supply	24VDC 4A, primary and redundant
	Auxiliary Power Voltage Range	18.0 to 31.2 VDC
	Max Power Dissipation	2.5 W
<b>Ambient Conditions</b>	Operating Temperature	-20°C to 60°C [-4°F to 140°F]
	Storage Temperature	-20°C to 75°C [-4°F to 167°F]
<b>Mechanical Data</b>	Degree of Protection	IP20
	Mounting Type	DIN rail
	Wire Gauge Range	16AWG for terminals 12AWG for ground connections

# STAHL Intrinsicly Safe Zener Barrier



9002-77-093-300001

## Overview

The Zener Barrier provides intrinsically safe operation of thermocouple applications or any other intrinsically safe device that falls within the safety data and electrical data parameters of the Zener Barrier.

This compact, space-saving device is easy to install on a DIN rail. Simply snapping the barrier onto a grounded DIN rail provides a connection to ground.

## Features

- Space-saving design
- Easily grounded via the DIN rail
- Convenient grounding lugs on top and bottom of barrier
- Only one type of exchangeable fuse – allows reduced stocking requirements and eliminates risk of errors during fuse replacement

**The Zener Barrier must be grounded in accordance with Article 504/505 of the National Electrical Code or the Canadian Electrical Code, Part 1, whichever applies. There are multiple ways to ground the Zener Barrier:**

- The DIN rail connection can provide a path to ground if the DIN rail is properly grounded.
- Ground the Zener Barrier by utilizing the top or bottom grounding lug.

**Refer to the installation manual for full installation instructions.**

**NOTE: An isolator barrier can be used if grounding is unavailable.**

## STAHL Intrinsicly Safe Zener Barrier Selection Guide

Part Number	Price	Signal Type	Field Device Example	Drawing
<a href="#">9002-77-093-300001</a>	\$202.00	Temperature input (mV signal)	Ungrounded thermocouple	<a href="#">PDF</a>
<a href="#">9002/13-280-110-001</a>	\$269.00	Binary input (3-wire prox) Binary output 4-20 mA input or output	PNP prox sensor, solenoid valve, indicators 4-20 mA transmitter 4-20 mA positioner	<a href="#">PDF</a>
<a href="#">9002/11-280-186-001</a>	\$213.00	Binary input (NPN sensors or dry contacts)	Dry contact NPN prox sensor	<a href="#">PDF</a>
<a href="#">9002/22-158-200-001</a>	\$201.00	11V pulse train	15.8 entity parameter	<a href="#">PDF</a>
<a href="#">9002/22-240-024-001</a>	\$201.00	18V pulse train	24V entity parameter	<a href="#">PDF</a>
<a href="#">9002/11-130-360-001</a>	\$252.00	Strain gauge	Load cell, 10VDC excitation	<a href="#">PDF</a>
<a href="#">9002/11-120-024-001</a>	\$252.00	Strain gauge	Load cell, 10VDC signal	<a href="#">PDF</a>

## Replacement Fuses

### STAHL Zener Barrier Replacement Fuses Selection Guide

Part Number	Price	Quantity Per Package	For Use With
<a href="#">158964</a>	\$40.50	5	STAHL Zener Barriers



158964

# Safety Products



*Warning: Safety products sold by AutomationDirect are Safety components only. The purchaser/installer is solely responsible for the application of these components and ensuring all necessary steps have been taken to assure each application and use meets all performance and applicable safety requirements and/or local, national and/or international safety codes as required by the application. AutomationDirect cannot certify that our products, used solely or in conjunction with other AutomationDirect or other vendors' products, will assure safety for any application. Any person using or applying any products sold by AutomationDirect is responsible for learning the safety requirements for their individual application and applying them, and therefore assumes all risks, and accepts full and complete responsibility, for the selection and suitability of the product for their respective application.*

*AutomationDirect does not provide design or consulting services, and cannot advise whether any specific application or use of our products would ensure compliance with the safety requirements for any application.*