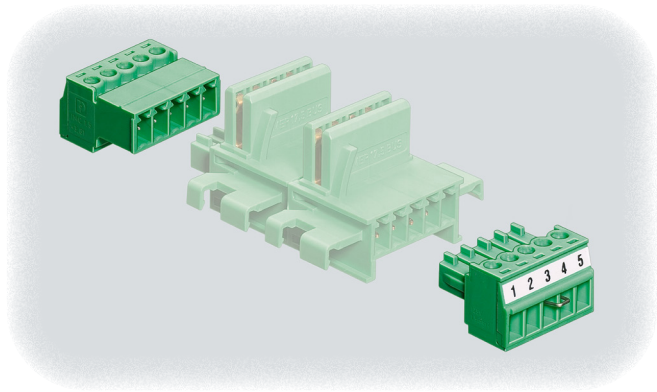


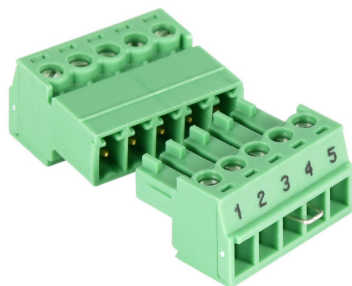
# STAHL Intrinsicly Safe Isolators Accessories – pac-Bus System



## Benefits of Using the pac-Bus System

- Quick, easy wiring
- Can be installed on standard DIN rail without tools by simply snapping into place
- Can be expanded at any time with additional pac-Bus units
- Suitable for industrial environments subject to vibration

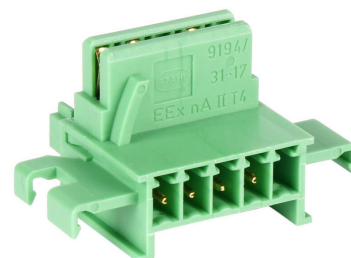
STAHL Intrinsicly Safe Isolators Accessories (pac-Bus System) Selection Guide			
Part Number	Price	Description	Weight
<a href="#">9194-50-01</a>	\$22.50	End terminal set for pac-Bus system	0.29 oz [8 g]
<a href="#">9294-31-12</a>	\$29.50	pac-Bus terminal for 92xx (12.5 mm [0.49 in] width) isolators	0.16 oz [5 g]
<a href="#">9194-31-17</a>	\$22.50	pac-Bus terminal for 91xx (17.6 mm [0.69 in] width) isolators	0.16 oz [5 g]



[9194-50-01](#)

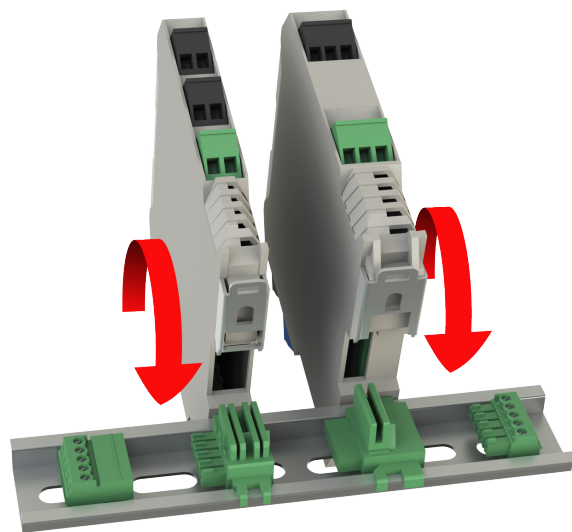
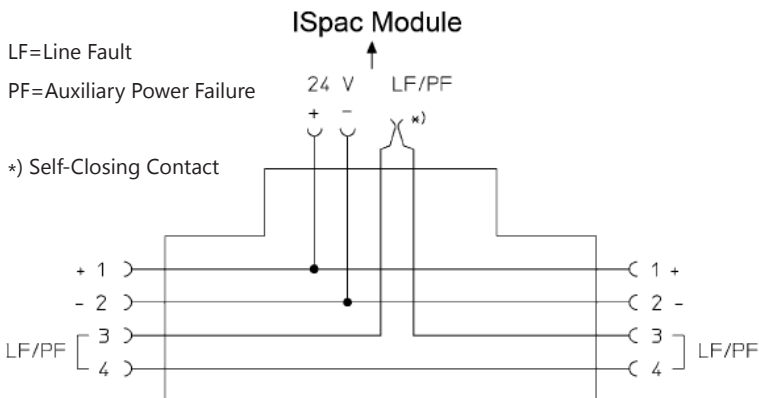


[9294-31-12](#)



[9194-31-17](#)

## Connection Diagram



Refer to installation instructions for details

# STAHL Intrinsicly Safe Zener Barrier



9002-77-093-300001

## Overview

The Zener Barrier provides intrinsically safe operation of thermocouple applications or any other intrinsically safe device that falls within the safety data and electrical data parameters of the Zener Barrier.

This compact, space-saving device is easy to install on a DIN rail. Simply snapping the barrier onto a grounded DIN rail provides a connection to ground.

## Features

- Thermocouple input
- Space-saving design
- Easily grounded via the DIN rail
- Convenient grounding lugs on top and bottom of barrier

**The Zener Barrier must be grounded in accordance with Article 504/505 of the National Electrical Code or the Canadian Electrical Code, Part 1, whichever applies. There are multiple ways to ground the Zener Barrier:**

- The DIN rail connection can provide a path to ground if the DIN rail is properly grounded.
- Ground the Zener Barrier by utilizing the top or bottom grounding lug.

**Refer to the installation manual for full installation instructions. NOTE: An isolator barrier can be used if grounding is unavailable.**

## STAHL Intrinsicly Safe Zener Barrier Selection Guide

Part Number	Price	Barrier Type	Field Device	Controller Side (PLC/DCS)	Drawing
<a href="#">9002-77-093-300001</a>	\$202.00	Thermocouple repeater	Ungrounded thermocouple	Equal to input signal	<a href="#">PDF</a>

## Replacement Fuses

### STAHL Zener Barrier Replacement Fuses Selection Guide

Part Number	Price	Quantity Per Package	For Use With
<a href="#">158964</a>	\$40.50	5	STAHL Zener Barriers



158964

# Safety Products



*Warning: Safety products sold by AutomationDirect are Safety components only. The purchaser/installer is solely responsible for the application of these components and ensuring all necessary steps have been taken to assure each application and use meets all performance and applicable safety requirements and/or local, national and/or international safety codes as required by the application. AutomationDirect cannot certify that our products, used solely or in conjunction with other AutomationDirect or other vendors' products, will assure safety for any application. Any person using or applying any products sold by AutomationDirect is responsible for learning the safety requirements for their individual application and applying them, and therefore assumes all risks, and accepts full and complete responsibility, for the selection and suitability of the product for their respective application.*

*AutomationDirect does not provide design or consulting services, and cannot advise whether any specific application or use of our products would ensure compliance with the safety requirements for any application.*