

Modular Temperature Controllers

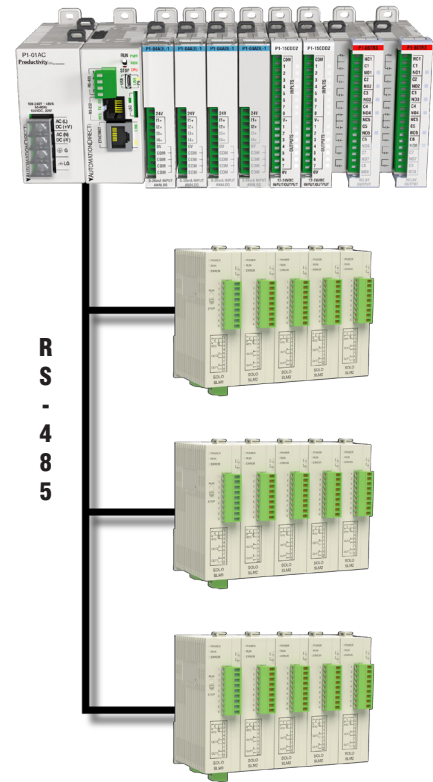
SOLO[®] Modular Temperature Controllers

SOLO modular temperature controllers consist of one control module and up to seven expansion modules to support up to eight independent control loops. Each module accepts thermocouple, RTD, mA, mV, or voltage inputs and provide two outputs for alarming or PID, On/Off, Ramp/Soak, or manual control modes.



Features

- Compact modular multi-loop temperature control system
- Up to eight temperature control loops
- PID, On/Off, Ramp/Soak, or manual control modes
- Process variable retransmission on current or voltage models
- 24 VDC operating voltage
- Voltage, current, voltage pulse, or relay outputs (depending on model)
- 12 alarm modes
- Additional relay output on all models
- Modbus ASCII/RTU communication via RS-485
- Free downloadable SL-SOFT configuration and monitoring software

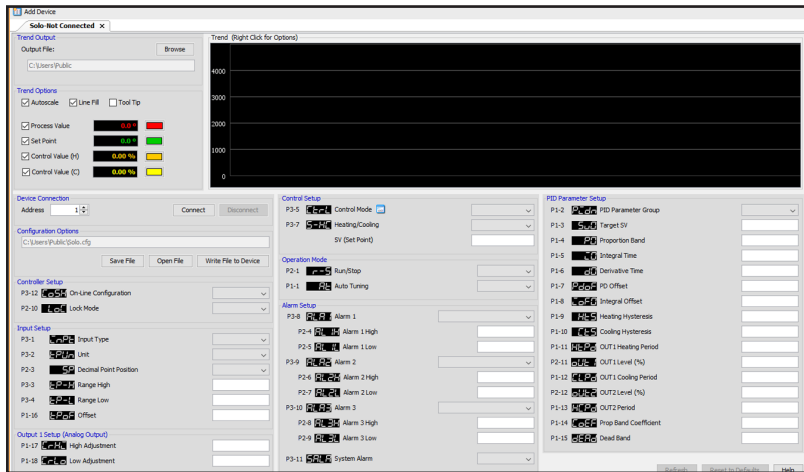


Use a PLC, HMI, or PC to collect data from the controllers and then have your program trigger events based on the values

Simple Configuration and Control

FREE configuration and monitoring software

That's right, FREE! Configuration and monitoring software (SL-SOFT, Version 3.0 downloadable from our Web site) allows you to configure each controller with ease and gives you data analysis capabilities for up to 16 units simultaneously.



FREE software that's easy-to-use and intuitive, with a GUI that make setting up the SOLO series of temperature controllers a breeze.
 (Download at <http://support.automationdirect.com/downloads.html>)

Process control setup made easy

All units support RS-485 serial communications (up to 38.4K bps), which allows you to use the free configuration software [SL-SOFT] to configure and monitor multiple SOLO controllers using Modbus RTU or Modbus ASCII protocols. For even simpler setup, the controller can be configured manually with the user-friendly keypad on each unit.

Collect and act on data

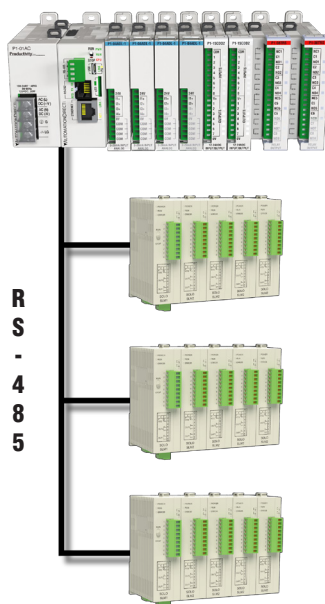
Using RS-485 communications, the SL-SOFT utility provides the ability to monitor and log historical data, using the built-in trending graph, from up to 16 devices and save it to a file.

Connect to other hardware

The RS-485 communications of the SOLO Temperature Controller can also provide connection to any HMI, PC or PLC supporting industry-standard Modbus RTU or Modbus ASCII protocol. This allows you to collect, monitor and have your application react to data being read from the SOLO controllers.

PLC Connection

Use a PLC to collect data from the controllers and then have your program trigger events based on the values



HMI Connection

Use an operator interface to collect data and monitor your process.



PC Connection

Use a PC to configure and monitor your SOLO controllers with SL-SOFT. Use the trending graph to monitor and log historical data.

