

# StrideLinx Remote Access Solution

## SE-SL Series Industrial VPN Routers



RoHS Compliant



**verizon**  
Model SE-SL3011-4GG Only

AT&T and T-Mobile compatible with LTE router

### StrideLinx Industrial VPN Router Models

Part Number	Price	Gigabit Ethernet	WiFi	4G LTE (2)
<a href="#"><u>SE-SL3001</u></a> (1)	\$400.00	✓		
<a href="#"><u>SE-SL3011</u></a>	\$494.00	✓		
<a href="#"><u>SE-SL3011-WF</u></a>	\$621.00	✓	✓	
<a href="#"><u>SE-SL3011-4GG</u></a>	\$727.00	✓		✓ (Global)

(1) SE-SL3001 does not support data logging or notifications.

(2) SIM card and data plan compatible with the frequencies and bands supported by the device and identified in the spec table are required for 4G LTE operation from the carrier. An M2M SIM card is configured with an amount of data and a duration of validity at the time of purchase.

Antennas required for WiFi and 4G models and must remain connected during operation.

**WARNING:** DO NOT insert or remove the SIM card when power is applied to the router.

### Key features

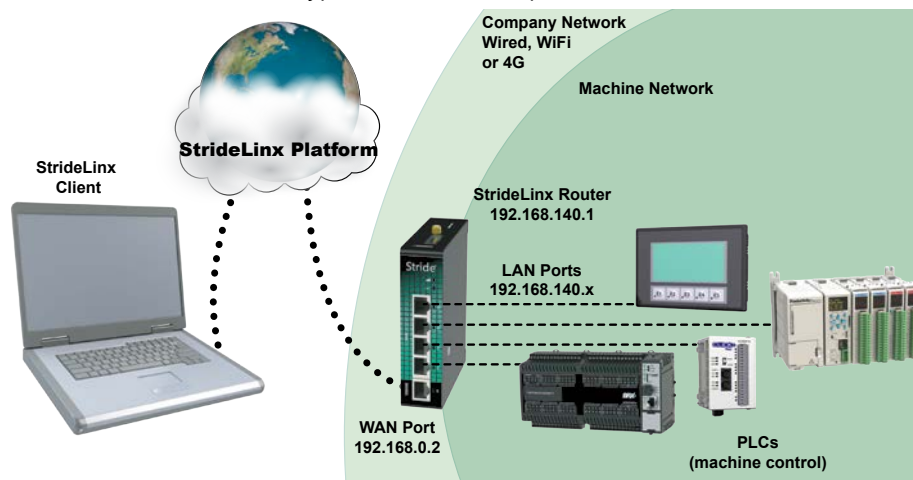
- Gigabit port speed
- Wired, WiFi, or 4G LTE WAN connectivity
- Easy, secure VPN networking
- Available Notification and Data Logging service
- Available Service Level Agreement (SLA)

### 4G LTE Router Options

Features	SE-SL3011-4GG
<b>Verizon*</b>	Yes – Certified
<b>AT&amp;T</b>	Yes – Tested
<b>T-Mobile</b>	Yes – Tested
<b>International Frequency Bands</b>	Yes, but not tested with carriers

\* Requires router firmware version 3.20 or later.

The StrideLinx Platform is a secure and powerful VPN platform based on a worldwide network of servers. It is focused on delivering and enhancing innovative remote service. A typical StrideLinx setup is illustrated as follows.



Please visit the [StrideLinx](#) page at [AutomationDirect.com](#) for an overview of the StrideLinx Remote Access Solution.



# Remote Access Solution

## SE-SL Series Industrial VPN Routers

Power Details	
<b>Input Voltage</b>	Class 2 LPS Power Supply, 12-24 VDC
<b>Maximum Input Power</b>	10W
<b>Maximum Input Current</b>	2A
<b>Internal Voltage Protection</b>	29V max
<b>Reverse Polarity Protection</b>	Yes
<b>Isolation</b>	1.5 kV

General Specifications	
<b>USB</b>	USB 2.0 (for configuration only)
<b>Processor</b>	MIPS 800MHz
<b>Digital Input for Local Control</b>	Yes
<b>Operating Temperature Range</b>	-20 to +65°C [-4 to +149°F]
<b>Storage Temperature Range</b>	-20 to +65°C [-4 to +149°F]
<b>Relative Humidity</b>	10 to 95% non-condensing
<b>Operating Altitude</b>	Up to maximum 2000m
<b>Storage Altitude</b>	Up to maximum 3000m
<b>Environmental Air</b>	For use in Pollution Degree 2 Environment. No corrosive gases permitted.
<b>EMI</b>	FCC CFR47 Part 15, EN55022/CISPR22, Class B
<b>EMS</b>	IEC61000-4-2 (ESD): $\pm 8$ kV (contact), $\pm 15$ kV (air) IEC61000-4-3 (RS): 10V/m (80MHz ~ 2GHz) IEC61000-4-4 (EFT): Power Port $\pm 4$ kV; Data Port: $\pm 2$ kV IEC61000-4-5 (Surge): Power Port: $\pm 2$ kV/DM, $\pm 4$ kV/CM; Data Port $\pm 2$ kV IEC61000-4-6 (CS): 10V (150kHz ~ 80MHz)
<b>RoHS and WEEE</b>	RoHS (Pb free) and WEEE compliant
<b>Packaging and Protection</b>	Metal case, IP20
<b>Mounting</b>	DIN rail
<b>Weight</b>	270~310 gram
<b>Certification</b>	CE, cULus, RoHS, REACH, AT&T (SE-SL3011-4G), FCC
<b>Warranty</b>	2 years
<b>Agency Approvals</b>	UL/cUL 60950-1, CE

WiFi Specifications (P/N SE-SL3011-WF Only)	
<b>WiFi IEEE 802.11 Version</b>	b/g/n
<b>WiFi Modes</b>	Station (Client) Mode and Access Point
<b>Speed</b>	72 Mbps
<b>Antenna Connection</b>	RP-SMA plug (male)
<b>Antenna Connector Torque</b>	3~5 lb-in [0.3~0.6 N·m]
<b>FCC ID</b>	XPYLILYW1

Ethernet Interface	
<b>Ethernet ports</b>	Five GbE (4x LAN, 1x WAN)
<b>Port Type</b>	Shielded RJ45
<b>Auto-Crossover</b>	Yes, allows you to use straight-through or crossover wired cables
<b>Auto-Sensing Operation</b>	Yes, full and half duplex
<b>Auto-Negotiating Speed</b>	Yes
<b>Flow Control</b>	Automatic
<b>Operating Mode</b>	Store and forward wire speed switching, non-blocking
<b>Devices Supported</b>	All IEEE 802.3 compliant devices are supported
<b>Protection</b>	Built-in 1.5 kV magnetic isolation
<b>Cable Requirements</b>	Twisted pair (Cat5e or better) (shielded recommended)
<b>Max. Cable Distance</b>	100 meters

4G LTE Specifications (P/N SE-SL3011-4G Only)	
<b>Protocols and Frequencies (AT&amp;T)</b>	LTE-FDD - B2, B4, B12 WCDMA - B2, B4, B5
<b>Speed</b>	LTE-FDD - Max. 100 Mbps (DL)/Max. 50 Mbps (UL) WCDMA - Max. 384 kbps (DL)/Max. 384 kbps (UL)
<b>Antenna Connection</b>	Two (2) SMA plugs (male)
<b>Antenna Connector Torque</b>	3~5 lb-in [0.3~0.6 N·m]
<b>SIM size</b>	Standard SIM (2FF)
<b>FCC ID</b>	XMR201605EC25A

4G LTE Specifications (P/N SE-SL3011-4GG Only)	
<b>Protocols and Frequencies (Global)</b>	LTE FDD: B1,B2,B3,B4,B5,B7,B8,B12,B13,B18,B19, B20,B25,B26,B28 LTE TDD: B38,B39,B40,B41 WCDMA: B1,B2,B4,B5,B6,B8,B19 GSM: B2,B3,B5,B8 GPRS: B2,B3,B5,B8
<b>Speed</b>	LTE-FDD: Max. 150 Mbps (DL)/Max. 50 Mbps (UL) LTE-TDD: Max. 130 Mbps (DL)/Max. 30 Mbps (UL) WCDMA: Max. 384 kbps (DL)/Max. 384 kbps (UL) GSM (EDGE): Max. 296 kbps (DL)/Max. 236.8 kbps (UL) GPRS: Max 107 kbps (DL)/Max. 85.6 kbps (UL)
<b>Antenna Connection</b>	Two (2) SMA plugs (male)
<b>Antenna Connector Torque</b>	3~5 lb-in [0.3~0.6 N·m]
<b>SIM size</b>	Standard SIM (2FF)
<b>FCC ID</b>	XMR201903EG25G

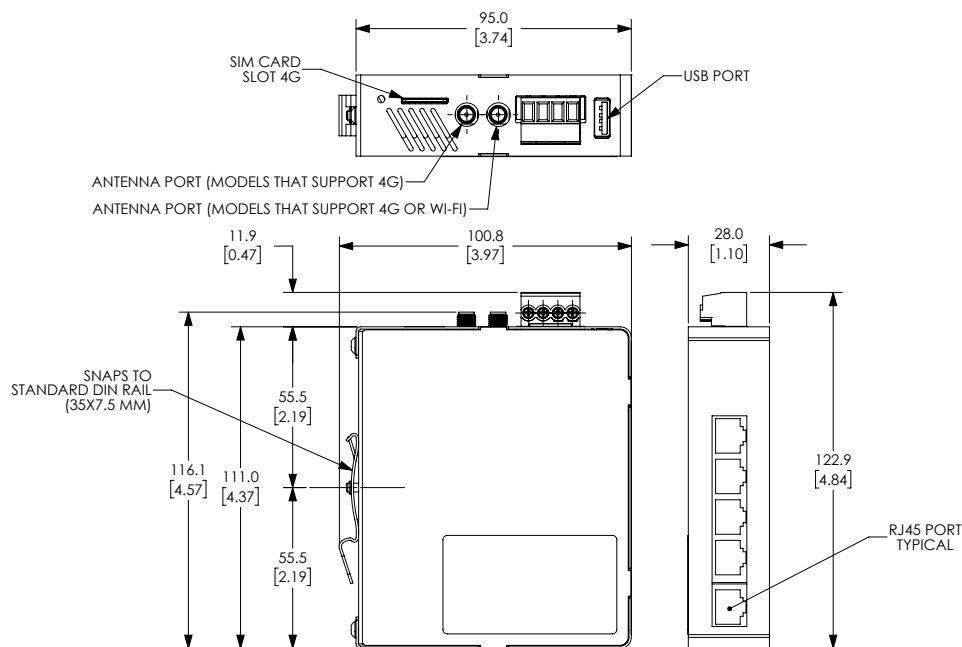


# Remote Access Solution

## SE-SL Series Industrial VPN Routers

### Dimensions

mm [inches]



See our website: [www.AutomationDirect.com](http://www.AutomationDirect.com) for complete engineering drawings.

# StrideLinx Remote Access Solution

## Cellular Antennas for [SE-SL3011-4GG](#) Routers



**[SE-ANT110](#) \$13.50**

STRIDE whip/tilt LTE antenna, connector mount.



**[SE-ANT130](#) \$32.00**

STRIDE whip/straight LTE antenna, magnetic base mount, 9.8ft/3m cable length.



**[SE-ANT150](#) \$41.00**

STRIDE dome LTE antenna, IP67, panel mount, 9.8ft/3m cable length.

4G LTE Antenna Specifications			
	<b><i>SE-ANT110</i></b>	<b><i>SE-ANT130*</i></b>	<b><i>SE-ANT150</i></b>
<b>Price</b>	\$13.50	\$32.00	\$41.00
<b>Fits</b>	<a href="#">SE-SL3011-4GG</a>		
<b>Antenna Connector</b>	SMA (M)		
<b>Application</b>	LTE, CDMA, GSM, HSPA, UMTS, GPRS		
<b>Impedance</b>	50Ω		
<b>Antenna Type</b>	whip, tilt	whip, straight	dome
<b>Cable Length</b>	N/A	3m [9.8 ft]	3m [9.8 ft]
<b>Frequency Range</b>	700–960MHz / 1.71–3.8 GHz	700–960MHz / 1.71–3.5 GHz	700–960MHz / 1.71–2.7 GHz
<b>Gain</b>	-3.0 dBi / 0.9 dBi	-2.5dBi / 0.1dBi	1.2 dBi / 3.2 dBi
<b>Height</b>	2.84 in	13 in	1.89 in
<b>IP Rating</b>	–	–	IP67
<b>Maximum Power</b>	10W	50W	5W
<b>Mounting Screw Torque</b>	NA	NA	2.94 N·m

\* Gains listed are based on the antenna being mounted on a suitable ground plane.



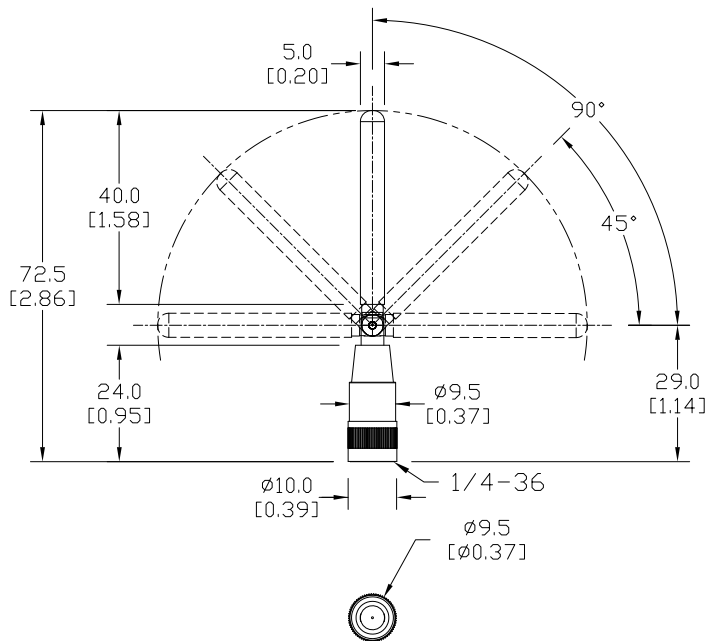
# Remote Access Solution

## Cellular Antennas for SE-SL3011-4G and SE-SL3011-4GG Routers

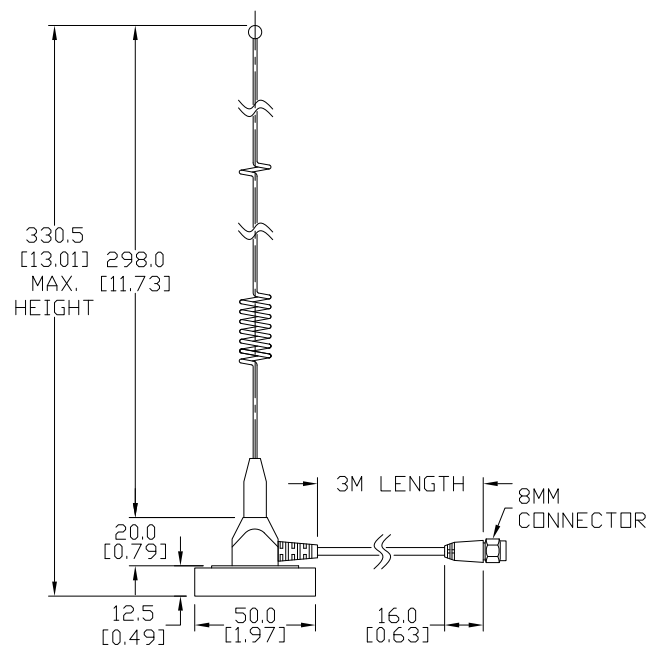
### Dimensions

mm [inches]

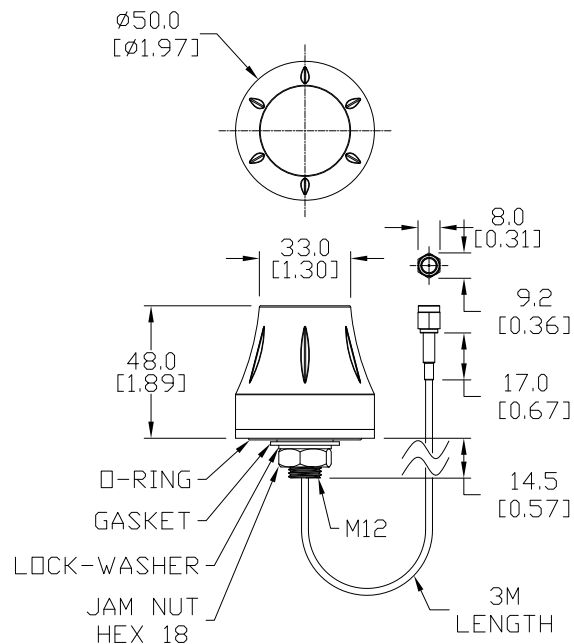
#### SE-ANT110:



#### SE-ANT130:



#### SE-ANT150:



See our website: [www.AutomationDirect.com](http://www.AutomationDirect.com) for complete engineering drawings.

# StrideLinx Remote Access Solution

## 2.4GHz WiFi Antennas for SE-SL3011-WF Routers (1 antenna required)



**SE-ANT210** \$10.50

STRIDE whip/straight 2.4 GHz WiFi antenna, IP65, connector mount.



**SE-ANT250** \$37.00

STRIDE dome 2.4 GHz WiFi antenna, IP67, panel mount, 9.8ft/3m cable length.

### 802.11 b/g/n 2.4 GHz WiFi Antenna Specifications

	<b><u>SE-ANT210</u></b>	<b><u>SE-ANT250</u></b>
<b>Price</b>	\$10.50	\$37.00
<b>Fits</b>	SE-SL3011-WF	
<b>Antenna Connector</b>	RP-SMA (M)	
<b>Application</b>	802.11 b/g/n	
<b>Impedance</b>	50Ω	
<b>Antenna Type</b>	whip, straight	dome
<b>Cable Length</b>	N/A	3m [9.8 ft]
<b>Frequency Range</b>	2.4–2.5 GHz	2.4–2.5 GHz
<b>Gain</b>	1.8 dBi	1.5 dBi
<b>Height</b>	1.2 in	1.89 in
<b>IP Rating</b>	IP65	IP67
<b>Maximum Power</b>	1W	5W
<b>Mounting Screw Torque</b>	NA	2.94 N·m



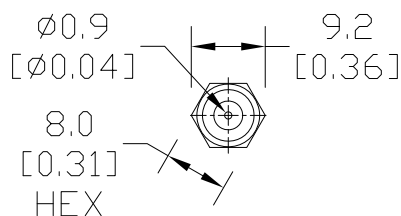
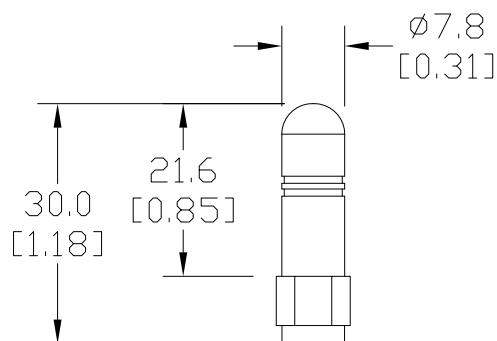
# Remote Access Solution

## 2.4GHz WiFi Antennas for SE-SL3011-WF Routers

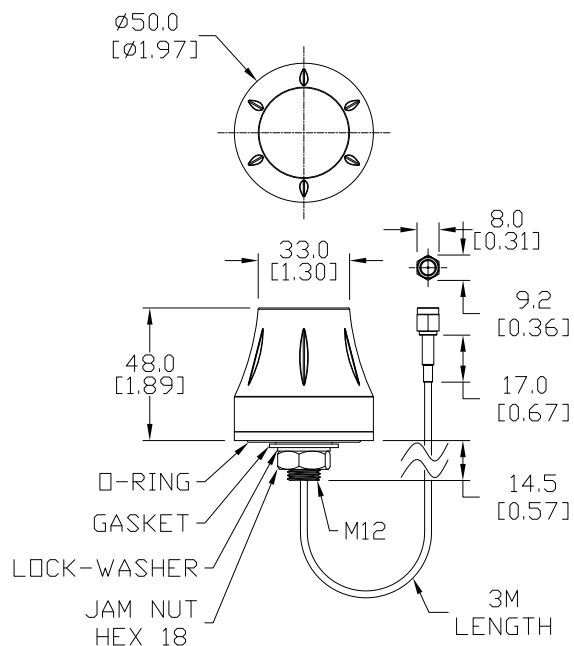
### Dimensions

mm [inches]

#### SE-ANT210:



#### SE-ANT250:



See our website: [www.AutomationDirect.com](http://www.AutomationDirect.com) for complete engineering drawings.



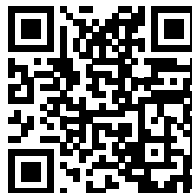
# Remote Access Solution

## Add-on Services – Add value to Remote Access

These licenses provide added services to your StrideLinx remote access. These are not needed for the basic function of the VPN remote access, but can be added to enhance the value of the platform to you and your customers.

Cloud Reporting licenses also include:

- unlimited cloud storage for up to 7 years with active license
- unlimited real time and user configurable dashboards
- unlimited data reports, and unlimited data tags per device



To see StrideLinx Cloud in action, please scan the QR code or visit <https://go2adc.com/vpn-cloud> and click the StrideLinx demo site link to sign up for an interactive product tour.

StrideLinx Cloud Logging and Reporting Licenses						
Part #	Price	Description	Term	Data Logging Points/Hour	Data Retention	Features
<a href="#"><u>SE-SLR010-1</u></a>	\$279.00	StrideLinx Basic Reporting and Logging License	1 year	1,000	6 months	License includes email notification, data logging enabled at 1,000 data samples per hour with schedule reporting. For use with (1) StrideLinx router. Includes StrideLinx Notify License ( <a href="#"><u>#SE-SL021-1</u></a> ).
<a href="#"><u>SE-SLR011-1</u></a>	\$499.00	StrideLinx Professional Reporting and Logging License	1 year	10,000	7 years	License includes email notification, data logging enabled at 10,000 data samples per hour with schedule reporting. For use with (1) StrideLinx router. Includes StrideLinx Notify License ( <a href="#"><u>#SE-SL021-1</u></a> ).



**WARNING:** DATA COLLECTED THROUGH CLOUD REPORTING WILL BE LOST IF YOUR LICENSE LAPSES. DATA FOR A SPECIFIC DEVICE WILL BE LOST IF A LICENSE IS REMOVED FROM THAT DEVICE. DATA IS ONLY STORED FOR THE DATA RETENTION DURATION OF YOUR LICENSE. IF DATA OLDER THAN THAT DURATION IS IMPORTANT, PLEASE ARCHIVE YOUR DATA LOCALLY BEFORE THE RETENTION LIMIT IS REACHED.

StrideLinx Add-on Licenses				
Part #	Price	Description	Term	Features
<a href="#"><u>SE-SL021-1</u></a>	\$131.00	StrideLinx Notify License	1 year	License includes alarm, trigger, recipient, and priority management with push and email notifications. For use with (1) StrideLinx router.
<a href="#"><u>SE-SLR001-1</u></a>	\$949.00	StrideLinx Professional License	1 year	License includes white label StrideLinx platform, unlimited VPN data traffic and advanced user and device access management. For use with (1) StrideLinx company.
<a href="#"><u>SE-SL051</u></a>	\$936.00	StrideLinx Mobile App Sustained Service License	1 year	License includes sustained service of white label StrideLinx iOS/Android mobile app with branding. For use with (1) existing white label StrideLinx iOS/Android mobile app. <b>ONLY AVAILABLE FOR EXISTING CUSTOM MOBILE APP USERS.</b>