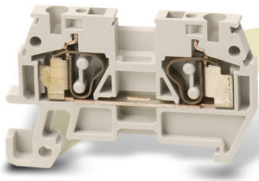


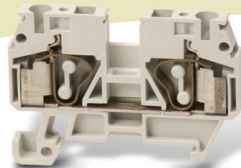
Screwless DINnectors At A Glance

Feed-through Terminal Blocks

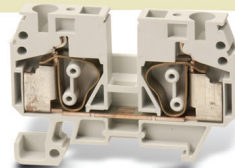
Feed-through terminal blocks are available in a number of wire size options to ensure flexibility and ease of installation for your DIN-rail mounted connection system.



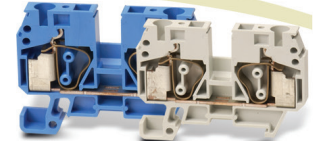
DN-Q12-A



DN-Q10-A



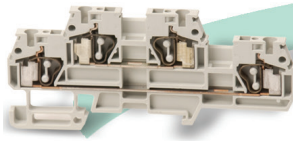
DN-Q8-A



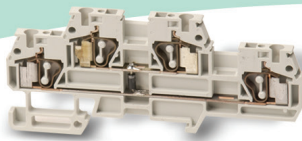
Note: All feed-through terminal blocks come in gray or blue

Multi-level Terminal Blocks

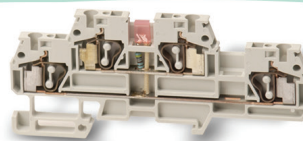
Double-level terminal blocks offer twice the wiring density of feed-through blocks.



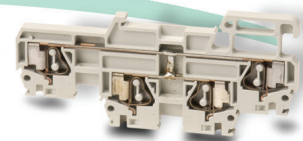
DN-QD12-A



DN-QD12DR-A



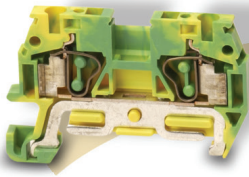
DN-QD12L2-A



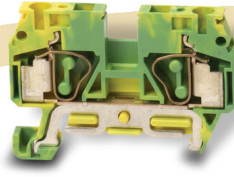
DN-QD12X-A

Ground Terminal Blocks

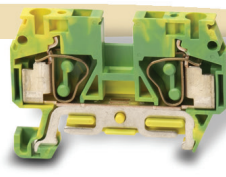
Ground terminal blocks are used to mechanically and electrically connect wires to the DIN rail, thus allowing the rail to function as a ground bus bar.



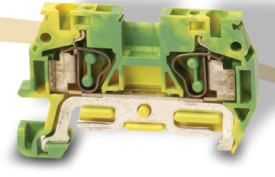
DN-QG12



DN-QG10



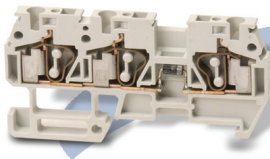
DN-QG8



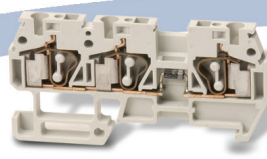
DN-QG12-1-2

Common Point Terminal Blocks

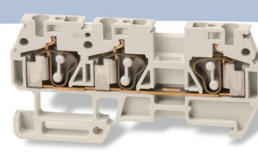
Common point blocks allow multiple wires to be connected by way of multiple spring clamps.



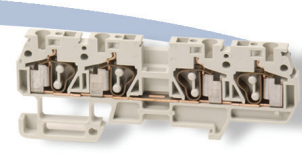
DN-Q12-1-2-A



DN-Q12-1-2DR-A

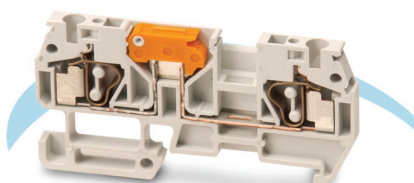


DN-Q12-1-2-A



DN-Q12-2-2-A

Disconnect Terminal Blocks



DN-QKBD12-A

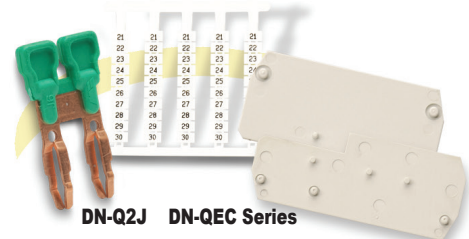
The DN-QKBD12-A allows fast circuit disconnection without rewiring.

Plug-in Terminal Blocks



DN-QEMX series

Marking Tags & Accessories



DN-Q2J DN-QEC Series

Screwless Terminal Blocks Overview

Why go screwless?

Screwless clamping technology offers several benefits:

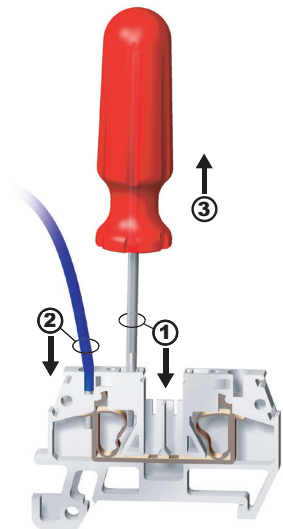
- **Speed:** On average, screwless connections can be made in half the time of screw type connections, cutting installation labor costs in half.
- **Ease:** No need for twisting and turning screws, so screwless terminal blocks are much easier on the installer's hands and arms. Also, wiring from the top of the terminal blocks allow installers to accurately and reliably see the wire fully inserted into the spring clamp.
- **Safety:** Never have a problem with faulty connections from loose screws again! Meets the same UL, and IEC standards as screw-type terminal blocks.
- **Maintenance-free:** The screwless spring clamp conforms to the wire with constant tension, making it maintenance-free.

Are there any trade-offs of going screwless versus screw-type?

Unless you need to clamp multiple wires to the same connection point, the answer is no. If you do, then there may be a slight trade-off in requiring more panel space than with screw terminal blocks. Unlike screw terminal blocks, screwless terminal block spring-clamps are designed to clamp a single wire, only. This is why multiple versions exist like the "one-to-two" or "two-to-two." These versions allow multiple wires to be connected together via multiple spring clamps.

How does it work?

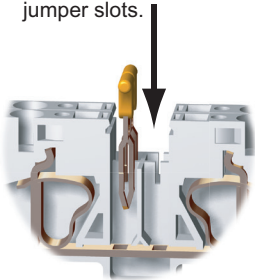
Well, it's pretty simple: Push, Insert, Release. Just push your screwdriver into the spring clamp (a rectangular shaped hole) to open the spring clamp (a circular shaped hole), insert the stripped wire into the clamp (a circular shaped hole), and pull out your screwdriver to release the clamp against the wire. That's it. The connection is made.



How do the jumpers work?

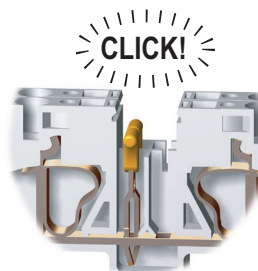
1

Properly align jumper bar with terminal block center jumper slots.

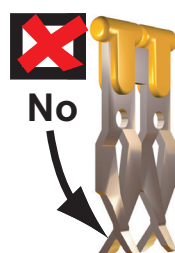
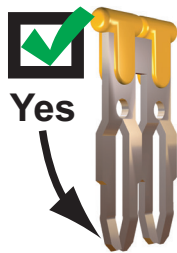
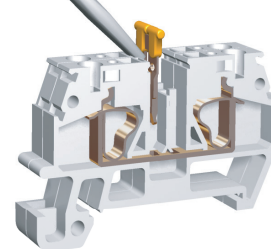


2

Push down until firmly seated.



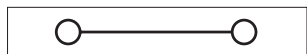
Removal



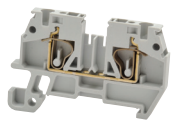
Yes = Good, acceptable jumper
No = Bad, damaged jumper



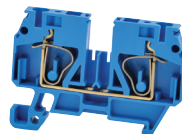
Screwless Feed-Through Terminal Blocks



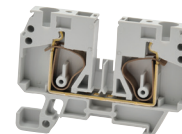
Feed-through terminal blocks provide the means to connect two wires together, and are available in sizes suitable for up to 8AWG wire. These terminal blocks are 35mm DIN rail mountable.



DN-Q12-A
(Euro Q2.5/35)



DN-Q10B-A
(Euro Q4/35)



DN-Q8-A
(Euro Q6/35)

Ordering Information									
	Part Number	Qty	Price	Part Number	Qty	Price	Part Number	Qty	Price
Gray Terminal Block	DN-Q12-A	50	\$42.00	DN-Q10-A	50	\$41.00	DN-Q8-A	50	\$64.00
Blue Terminal Block	DN-Q12B-A	50	\$43.50	DN-Q10B-A	50	\$43.50	DN-Q8B-A	50	\$69.00
Description	Screwless feed-through terminal blocks			Screwless feed-through terminal blocks			Screwless feed-through terminal blocks		

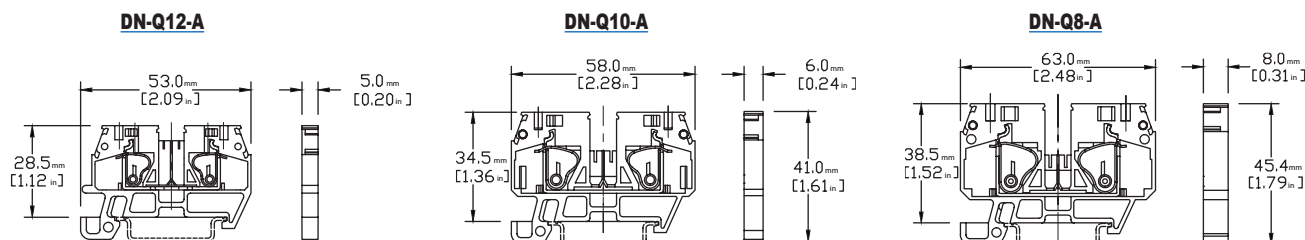
Technical Specifications									
Stripping Length	12mm [0.47 in]			15mm [0.59 in]			18mm [0.71]		
Density	200/m [60 pcs/ft]			166/m [50 pcs/ft]			125/m [38 pcs/ft]		
UL Approval*	600V	20A	24-12 AWG	600V	30A	24-10 AWG	600V	45A	22-8 AWG
VDE Approval	630V	24A	2.5 mm ²	630V	32A	4mm ²	630V	41A	6mm ²
Operating Temperature	Ambient air temperature: -20 to 105°C [-4 to 221°F] / Relative humidity: 50% max at 40°C [104°F]; 90% max at 20°C [68°F]								
SCCR Rating	10kA per Table SB4.1, 2009, UL 508A, Maximum short circuit current rating for unmarked components								
CE Conformity	CE (EN 60947-1 / EN 60947-7-1)								
Agency File #	UL E179129								

Accessories										
End Covers	DN-QEC12	50	\$21.50	DN-QEC10	50	\$21.50	DN-QEC8	50	\$25.50	
	DN-QEC12MN	10	\$5.25	DN-QEC10MN	10	\$5.25	DN-QEC8MN	10	\$5.75	
Jumpers	2-pole	DN-2J2Y	100	\$43.00	DN-2J4Y	100	\$46.00	DN-2J6Y	100	\$60.00
		DN-2J2YMN	25	\$13.00	DN-2J4YMN	25	\$14.50	DN-2J6YMN	25	\$15.00
	3-pole	DN-3J2Y	100	\$62.00	DN-3J4Y	100	\$74.00	DN-3J6Y	100	\$84.00
		DN-3J2YMN	25	\$18.00	DN-3J4YMN	25	\$22.00	DN-3J6YMN	25	\$23.50
	Multi-pole	DN-24J2Y	5	\$28.00	DN-24J4Y	5	\$29.50	DN-12J6Y	10	\$35.50
	Jumper Cutting Tool	DN-J2CUT	1	\$79.00	DN-J4CUT	1	\$79.00	-		
35mm DIN Rail	7.5 mm high	DN-R35S1	10	\$39.00	DN-R35S1	10	\$39.00	DN-R35S1	10	\$39.00
		DN-R35S1-2	2	\$11.00	DN-R35S1-2	2	\$11.00	DN-R35S1-2	2	\$11.00
End Brackets	DN-EB35	50	\$67.00	DN-EB35	50	\$67.00	DN-EB35	50	\$67.00	
	DN-EB35MN	20	\$31.50	DN-EB35MN	20	\$31.50	DN-EB35MN	20	\$31.50	
	DN-EB35-A	50	\$47.50	DN-EB35-A	50	\$47.50	DN-EB35-A	50	\$47.50	
	DN-EB35-A-10	10	\$12.00	DN-EB35-A-10	10	\$12.00	DN-EB35-A-10	10	\$12.00	
	DN-QEB35	50	\$42.50	DN-QEB35	50	\$42.50	DN-QEB35	50	\$42.50	
	DN-QEB35-10	10	\$11.50	DN-QEB35-10	10	\$11.50	DN-QEB35-10	10	\$11.50	
Angled Support Bracket	DN-ASB1	50	\$107.00	DN-ASB1	50	\$107.00	DN-ASB1	50	\$107.00	
Marking Tags	DN-QL Series	500	various	DN-QL Series	500	various	DN-QL Series	500	various	

*Copper wire only

Note: For more information on accessories, see the DINnectors Accessories section of this chapter.

Dimensions

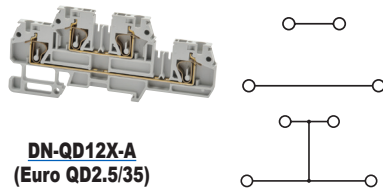




Screwless Double-Level Terminal Blocks

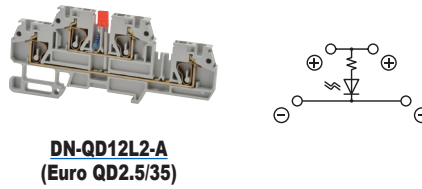
DN-QD12-A DN-QD12X-A

Double-level terminal blocks offer twice the wiring density of feed-through blocks. The DN-QD12X-A version is supplied with an internal jumper to common all four of its connection points.



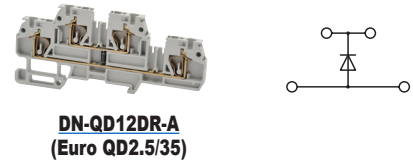
LED version

This style is available with LED indicator installed. The LED illuminates when voltage is present. The DN-QD12L2-A version is for 12 - 24 VAC/DC circuits, and includes current limiting elements.



Diode version

Typically, an inductive load produces a spike when it is turned off. These terminal blocks with built-in diode help protect your PLC's output circuits. (Please see application note AN-MISC-032 at <http://support.automationdirect.com/docs/an-misc-032.pdf>)

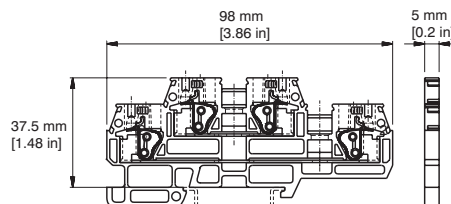


Ordering Information													
	Part Number	Qty	Price	Part Number	Qty	Price	Part Number	Qty	Price	Part Number	Qty	Price	
Gray Terminal Blk	DN-QD12-A	25	\$61.00	DN-QD12X-A	10	\$41.00	DN-QD12L2-A	10	\$42.00	DN-QD12DR-A	10	\$41.00	
Blue Terminal Blk	DN-QD12B-A	25	\$64.00	DN-QD12XB-A	10	\$42.50	-		-				
Description	Double-level screwless terminal blocks			Double-level screwless cross-connected terminal blocks			Double-level screwless terminal blocks w/ LED installed for visual circuit indication			Double-level screwless terminal blocks w/diode installed for circuit protection			
Technical Specifications													
Stripping Length	12mm [0.47 in]			12mm [0.47 in]			12mm [0.47 in]			12mm [0.47 in]			
Density	200/m [60 pcs/ft]			200/m [60 pcs/ft]			200/m [60 pcs/ft]			200/m [60 pcs/ft]			
UL Approval*	600V	20A	24-12 AWG	600V	20A	24-12AWG	600V	20A	24-12 AWG	600V	1A diode	24-12 AWG	
VDE Approval	500V	24A	2.5 mm ²	500V	24A	2.5 mm ²	500V	24A	2.5 mm ²	500V	1A diode	2.5 mm ²	
LED Voltage	-			-			12 -24 VAC/DC. 3.4 kΩ			-			
Operating Temp	Ambient air temperature: -20 to 105°C [-4 to 221°F] / Relative humidity: 50% max at 40°C [104°F]; 90% max at 20°C [68°F]												
SCCR Rating	10kA per Table SB4.1, 2009, UL 508A, Maximum short circuit current rating for unmarked components												
CE Conformity	CE (EN 60947-1 / EN 60947-7-1)												
Agency File #	UL E179129												
Accessories													
End Covers	DN-QDEC12	25	\$16.50	DN-QDEC12	25	\$16.50	DN-QDEC12	25	\$16.50	DN-QDEC12	25	\$16.50	
Jumpers	2-pole	DN-2J2Y	100	\$43.00	DN-2J2Y	100	\$43.00	DN-2J2Y	100	\$43.00	DN-2J2Y	100	\$43.00
		DN-2J2YMN	25	\$13.00	DN-2J2YMN	25	\$13.00	DN-2J2YMN	25	\$13.00	DN-2J2YMN	25	\$13.00
	3-pole	DN-3J2Y	100	\$62.00	DN-3J2Y	100	\$62.00	DN-3J2Y	100	\$62.00	DN-3J2Y	100	\$62.00
		DN-3J2YMN	25	\$18.00	DN-3J2YMN	25	\$18.00	DN-3J2YMN	25	\$18.00	DN-3J2YMN	25	\$18.00
	24-pole	DN-24J2Y	5	\$28.00	DN-24J2Y	5	\$28.00	DN-24J2Y	5	\$28.00	DN-24J2Y	5	\$28.00
	Cutting Tool	DN-J2CUT	1	\$79.00	DN-J2CUT	1	\$79.00	DN-J2CUT	1	\$79.00	DN-J2CUT	1	\$79.00
35mm DIN Rail	7.5 mm high	DN-R35S1	10	\$39.00	DN-R35S1	10	\$39.00	DN-R35S1	10	\$39.00	DN-R35S1	10	\$39.00
		DN-R35S1-2	2	\$11.00	DN-R35S1-2	2	\$11.00	DN-R35S1-2	2	\$11.00	DN-R35S1-2	2	\$11.00
End Brackets	DN-EB35	50	\$67.00	DN-EB35	50	\$67.00	DN-EB35	50	\$67.00	DN-EB35	50	\$67.00	
	DN-EB35MN	20	\$31.50	DN-EB35MN	20	\$31.50	DN-EB35MN	20	\$31.50	DN-EB35MN	20	\$31.50	
	DN-EB35-A	50	\$47.50	DN-EB35-A	50	\$47.50	DN-EB35-A	50	\$47.50	DN-EB35-A	50	\$47.50	
	DN-EB35-A-10	10	\$12.00	DN-EB35-A-10	10	\$12.00	DN-EB35-A-10	10	\$12.00	DN-EB35-A-10	10	\$12.00	
	DN-QEB35	50	\$42.50	DN-QEB35	50	\$42.50	DN-QEB35	50	\$42.50	DN-QEB35	50	\$42.50	
	DN-QEB35-10	10	\$11.50	DN-QEB35-10	10	\$11.50	DN-QEB35-10	10	\$11.50	DN-QEB35-10	10	\$11.50	
Angled Support Bracket	DN-ASB1	50	\$107.00	DN-ASB1	50	\$107.00	DN-ASB1	50	\$107.00	DN-ASB1	50	\$107.00	
Marking Tags	DN-QL Series	500	various	DN-QL Series	500	various	DN-QL Series	500	various	DN-QL Series	500	various	

*Copper wire only
For more information on accessories, see the DINnectors Accessories section of this chapter.

Dimensions

DN-QD12-A Series



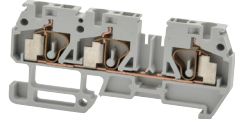
Note: Jumpering and testing capability on bottom level only, for DN-QD12X, DN-QD12L2 and DN-QD12DR.



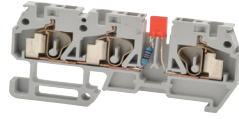
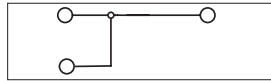
Screwless One-Connection to Two-Connection Terminal Blocks

Unlike screw terminal blocks, screwless terminal block spring clamps are designed to clamp a single wire. If your application requires multiple wires to be tied together, we offer multiple versions, including one-to-two and two-to-two models.

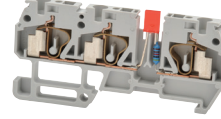
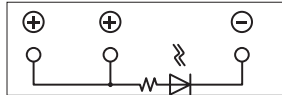
These versions allow multiple wires to be connected together by way of multiple spring clamps and are 35mm DIN-rail mountable. LED and diode variations are also available in this style.



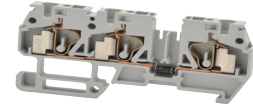
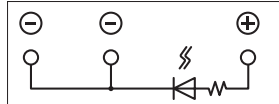
DN-Q12-1-2-A
(Euro QM1/2 2.5/35)



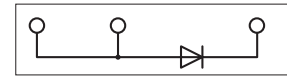
DN-Q12-1-2L1-A
(Euro QM1/2 2.5/35)



DN-Q12-1-2L2-A
(Euro QM1/2 2.5/35)



DN-Q12-1-2DR-A
(Euro QM1/2 2.5/35)



1N4007 Reverse bias diode
(See Diode information located on page tTBL-60)

Ordering Information

	Part Number	Qty	Price	Part Number	Qty	Price	Part Number	Qty	Price	Part Number	Qty	Price
Gray Term Block	DN-Q12-1-2-A	25	\$39.50	DN-Q12-1-2L1-A	10	\$39.00	DN-Q12-1-2L2-A	10	\$39.00	DN-Q12-1-2DR-A	10	\$35.00
Blue Term Block	DN-Q12B-1-2-A	25	\$42.00	-	-	-	-	-	-	-	-	-
Description	One-connection to two-connection screwless terminal block for 24-12 AWG wire			One negative connection to two positive connection screwless terminal block for 24-12 AWG wire. LED installed for visual circuit indication			One positive connection to two negative connection screwless terminal block for 24-12 AWG wire. LED installed for visual circuit indication			One-connection to two-connection screwless terminal block for 24-12 AWG wire. 1N4007 reverse bias diode installed for circuit protection		

Technical Specifications

Stripping Length	12mm [0.47 in]			12mm [0.47 in]			12mm [0.47 in]			12mm [0.47 in]		
Density	200/m [60 pcs/ft]			200/m [60 pcs/ft]			200/m [60 pcs/ft]			200/m [60 pcs/ft]		
UL Approval*	600V	20A	24-12 AWG	600V	20A	24-12AWG	600V	20A	24-12 AWG	600V	1A diode	24-12 AWG
VDE Approval	630V	24A	2.5 mm ²	630V	24A	2.5 mm ²	630V	24A	2.5 mm ²	630V	1A diode	2.5 mm ²
LED Voltage	-			12-24 VAC/DC 3.4 kΩ			12-24 VAC/DC 3.4 kΩ			-		
Operating Temp	Ambient air temperature: -20 to 105°C [-4 to 221°F] / Relative humidity: 50% max at 40°C [104°F]; 90% max at 20°C [68°F]											
SCCR Rating	10kA per Table SB4.1, 2009, UL 508A, Maximum short circuit current rating for unmarked components											
CE Conformity	CE (EN 60947-1 / EN 60947-7-1)											
Agency File #	UL E179129											

Accessories

End Covers	DN-QEC12-1-2	25	\$15.00	DN-QEC12-1-2	25	\$15.00	DN-QEC12-1-2	25	\$15.00	DN-QEC12-1-2	25	\$15.00
Jumper	2-pole	DN-2J2Y	100	\$43.00	-	-	-	-	-	-	-	-
		DN-2J2YMN	25	\$13.00								
	3-pole	DN-3J2Y	100	\$62.00								
		DN-3J2YMN	25	\$18.00								
24-pole	DN-24J2Y	5	\$28.00									
Cutting Tool	DN-J2CUT	1	\$79.00	DN-J2CUT	1	\$79.00	DN-J2CUT	1	\$79.00	DN-J2CUT	1	\$79.00
35mm DIN Rail	DN-R35S1	10	\$39.00	DN-R35S1	10	\$39.00	DN-R35S1	10	\$39.00	DN-R35S1	10	\$39.00
	DN-R35S1-2	2	\$11.00	DN-R35S1-2	2	\$11.00	DN-R35S1-2	2	\$11.00	DN-R35S1-2	2	\$11.00
End Brackets	DN-EB35	50	\$67.00	DN-EB35	50	\$67.00	DN-EB35	50	\$67.00	DN-EB35	50	\$67.00
	DN-EB35MN	20	\$31.50	DN-EB35MN	20	\$31.50	DN-EB35MN	20	\$31.50	DN-EB35MN	20	\$31.50
	DN-EB35-A	50	\$47.50	DN-EB35-A	50	\$47.50	DN-EB35-A	50	\$47.50	DN-EB35-A	50	\$47.50
	DN-EB35-A-10	10	\$12.00	DN-EB35-A-10	10	\$12.00	DN-EB35-A-10	10	\$12.00	DN-EB35-A-10	10	\$12.00
	DN-QEB35	50	\$42.50	DN-QEB35	50	\$42.50	DN-QEB35	50	\$42.50	DN-QEB35	50	\$42.50
	DN-QEB35-10	10	\$11.50	DN-QEB35-10	10	\$11.50	DN-QEB35-10	10	\$11.50	DN-QEB35-10	10	\$11.50
Angled Support Bracket	DN-ASB1	50	\$107.00	DN-ASB1	50	\$107.00	DN-ASB1	50	\$107.00	DN-ASB1	50	\$107.00
Marking Tags	DN-QL Series	500	various	DN-QL Series	500	various	DN-QL Series	500	various	DN-QL Series	500	various

* Copper wire only.

For more information on accessories, see the [DINnectors Accessories](#) section of this chapter.



Screwless One-Connection to Two-Connection Terminal Blocks

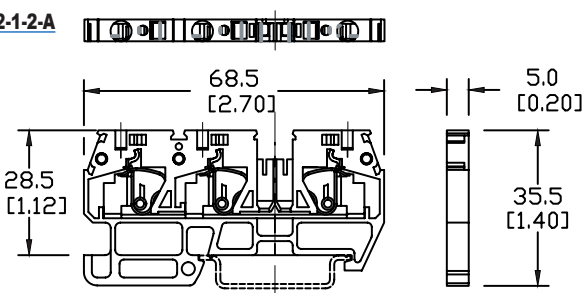
1N4007 Diode Information		
RMS Reverse Voltage*	V (Rrms)	600V
Average Rectified Forward Current Single Phase, Resistive Load, 60Hz	I (O)	1.0 A
Non-Repetitive Peak Surge Current (Surge applied at rated load)	I (FSM)	30A (1 cycle)
Maximum Forward Voltage Drop [I (F) = 1.0 A]	V (F)	1.1 V
Maximum Reverse Current	I (R)	10eA

* The maximum reverse voltage rating of the diode alone is 1000V, but should not exceed the maximum 600V rating of the terminal block.

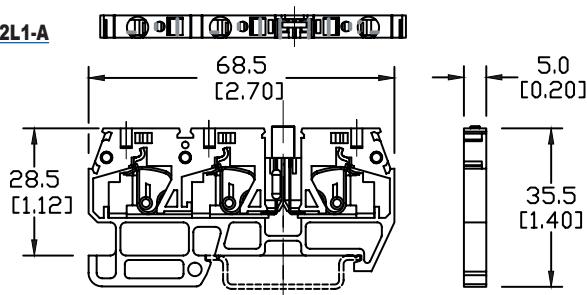
Dimensions

mm [inches]

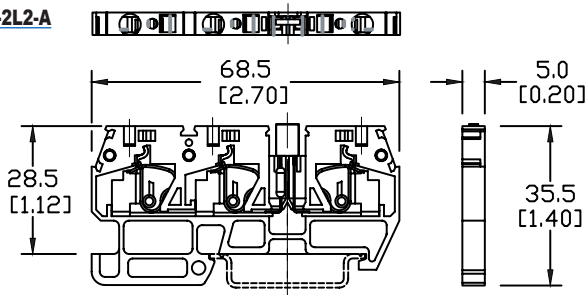
DN-Q12-1-2-A



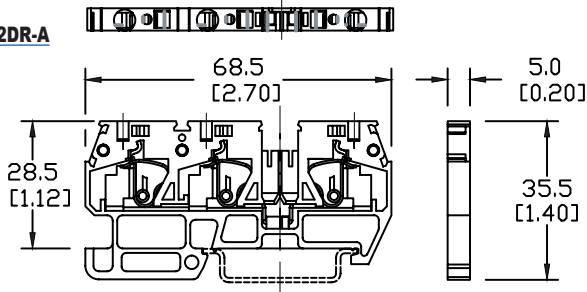
DN-Q12-1-2L1-A



DN-Q12-1-2L2-A



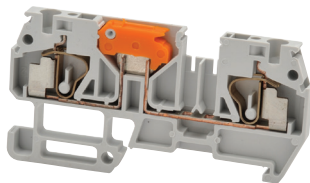
DN-Q12-1-2DR-A





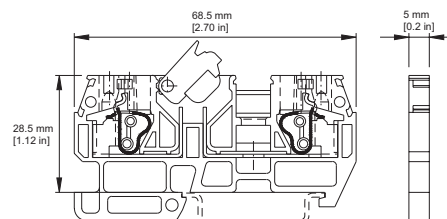
Screwless Knife-Blade Disconnect Terminal Blocks

The DN-QKBD12-A allows fast circuit disconnection without rewiring and is 35mm DIN-rail mountable. This model provides circuit disconnection capability by means of a pivoting, insulated "knife blade."



DN-QKBD12-A (Euro QT2.5/35)

Dimensions



WARNING: DO NOT DISCONNECT UNDER LOAD

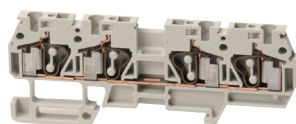
Knife - Blade Disconnect Screwless Terminal Block				
		Part Number	Qty	Price
Gray Terminal Block		DN-QKBD12-A	25	\$72.00
Description		Knife-blade disconnect screwless terminal block for 24-12 AWG wire		
Specifications				
Wire Strip Length		12mm [0.47 in]		
Density		200/m [60 pcs/ft]		
UL Approval*		600V	20A	24-12 AWG
VDE Approval		630V	24A	2.5 mm ²
Operating Temperature		Ambient air temperature: -20 to 85°C [-4 to 185°F] Relative humidity: 50% max at 40°C [104°F]; 90% max at 20°C [68°F]		
SCCR		10kA per Table SB4.1, 2009, UL 508A, Maximum short circuit current rating for unmarked components		
CE Conformity		CE (EN 60947-1 / EN 60947-7-1)		
Agency File #		UL E179129		
Accessories				
		Part Number	Pcs/ Pkg	Price
End Cover		DN-QEC12-1-2	25	\$15.00
Jumpers	2-pole	DN-2J2Y	100	\$43.00
		DN-2J2YMN	25	\$13.00
	3-pole	DN-3J2Y	100	\$62.00
DN-3J2YMN		25	\$18.00	
	24-pole	DN-24J2Y	5	\$28.00
Jumper Cutting Tool		DN-J2CUT	1	\$79.00
35mm DIN Rail	7.5 mm high	DN-R35S1	10	\$39.00
		DN-R35S1-2	2	\$11.00
End Brackets		DN-EB35	50	\$67.00
		DN-EB35MN	20	\$31.50
		DN-EB35-A	50	\$47.50
		DN-EB35-A-10	10	\$12.00
		DN-QEB35	50	\$42.50
		DN-QEB35-10	10	\$11.50
Angled Support Bracket		DN-ASB1	50	\$107.00
Marking Tags		DN-QL Series	500	various

* Copper wire only.

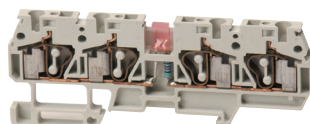
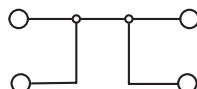
For more information on accessories, see the DINnectors Accessories section of this chapter.



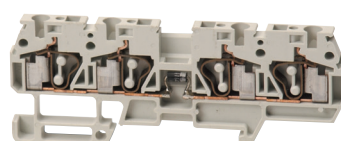
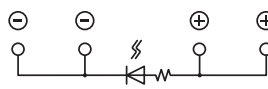
Screwless Two-Connection to Two-Connection Terminal Blocks



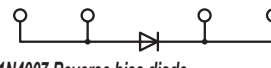
DN-Q12-2-2-A
(Euro QM2/2 2.5/35)



DN-Q12-2-2L2-A
(Euro QM2/2 2.5/35)



DN-Q12-2-2D2-A
(Euro QM2/2 2.5/35)



1N4007 Reverse bias diode
(See Diode information located on page tTBL-60)

Ordering Information

	Part Number	Qty	Price	Part Number	Qty	Price	Part Number	Qty	Price
Gray Terminal Block	DN-Q12-2-2-A	25	\$42.00	DN-Q12-2-2L2-A	10	\$42.50	DN-Q12-2-2D2-A	10	\$36.00
Blue Terminal Block	DN-Q12B-2-2-A	25	\$43.50	-	-	-	-	-	-
Description	Two-connection to two-connection screwless terminal block for 24-12 AWG wire			Two-connection to two-connection screwless terminal block for 24-12 AWG wire. LED installed for visual circuit indication			Two-connection to two-connection screwless terminal block for 24-12 AWG wire. Reverse bias diode installed for circuit protection		

Technical Specifications

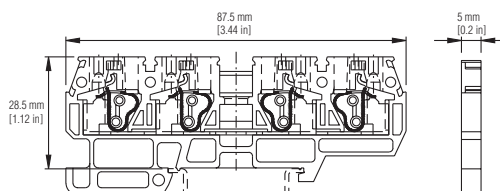
Stripping Length	12mm [0.47 in]			12mm [0.47 in]			12mm [0.47 in]		
Density	200/m [60 pcs/ft]			200/m [60 pcs/ft]			200/m [60 pcs/ft]		
UL Approval*	600V	20A	24-12 AWG	600V	20A	24-12 AWG	600V	1A Diode	24-12 AWG
VDE Approval	630V	20A	2.5 mm ²	630V	24A	2.5 mm ²	630V	1A Diode	2.5 mm ²
LED Voltage	-			12 - 24 VAC/DC 3.4 kΩ			-		
Operating Temperature	Ambient air temperature: -20 to 105°C [-4 to 221°F] Relative humidity: 50% max at 40°C [104°F]; 90% max at 20°C [68°F]								
SCCR	10kA per Table SB4.1, 2009, UL 508A, Maximum short circuit current rating for unmarked components								
CE Conformity	CE (EN 60947-1 / EN 60947-7-1)								
Agency File #	UL E179129								

Accessories

End Cover	DN-QEC12-2-2	25	\$16.50	DN-QEC12-2-2	25	\$16.50	DN-QEC12-2-2	25	\$16.50	
Jumpers	2-pole	DN-2J2Y	100	\$43.00	-	-	-	-	-	
		DN-2J2YMN	25	\$13.00						
	3 pole	DN-3J2Y	100	\$62.00						
		DN-3J2YMN	25	\$18.00						
24-pole	DN-24J2Y	5	\$28.00							
Jumper Cutting Tool	DN-J2CUT	1	\$79.00							
DIN Rail	7.5 mm high	DN-R35S1	10	\$39.00	DN-R35S1	10	\$39.00	DN-R35S1	10	\$39.00
		DN-R35S1-2	2	\$11.00	DN-R35S1-2	2	\$11.00	DN-R35S1-2	2	\$11.00
End Bracket		DN-EB35	50	\$67.00	DN-EB35	50	\$67.00	DN-EB35	50	\$67.00
		DN-EB35MN	20	\$31.50	DN-EB35MN	20	\$31.50	DN-EB35MN	20	\$31.50
		DN-EB35-A	50	\$47.50	DN-EB35-A	50	\$47.50	DN-EB35-A	50	\$47.50
		DN-EB35-A-10	10	\$12.00	DN-EB35-A-10	10	\$12.00	DN-EB35-A-10	10	\$12.00
		DN-QEB35	50	\$42.50	DN-QEB35	50	\$42.50	DN-qeb35	50	\$42.50
		DN-QEB35-10	10	\$11.50	DN-QEB35-10	10	\$11.50	DN-QEB35-10	10	\$11.50
Angled Support Bracket	DN-ASB1	50	\$107.00	DN-ASB1	50	\$107.00	DN-ASB1	50	\$107.00	
Marking Tags	DN-QL Series	500	various	DN-QL Series	500	various	DN-QL Series	500	various	

* Copper wire only

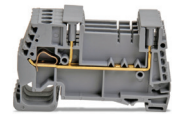
For more information on accessories, see the DINnectors Accessories section of this chapter.



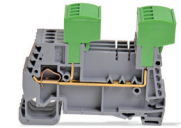


Single and double-level DN-QEMxx screwless plug-in terminal blocks with spring terminals accept all DN-xxPLUG Euro plugs. These terminal blocks are 35mm DIN-rail mountable.

Screwless Plug-In Terminal Blocks



(4) DN-QEMXM1
EURO XM1/2V 2.5/35



(4) DN-QEMXM1 with
(2) DN-4PLUG

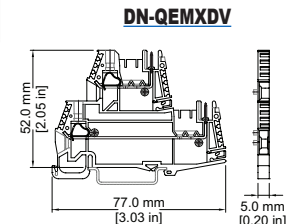
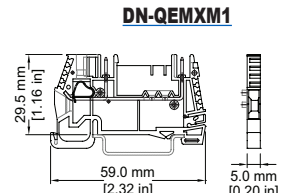


(4) DN-QEMXDV
EURO XDV 2.5/35



(4) DN-QEMXDV with
(2) DN-4PLUG

Ordering Information							
	Part Number	Qty	Price	Part Number	Qty	Price	
Gray Terminal Block	DN-QEMXM1	32	\$63.00	DN-QEMXDV	32	\$81.00	
Technical Specifications							
Stripping Length	8mm [0.31 in]			8mm [0.31 in]			
Levels	Single Level			Double Level			
UL Approval*	300V	12A	24-12 AWG	300V	11A**	24-12 AWG	
Operating Temperature	Ambient air temperature: -20°C to 105°C [-4°F to 221°F] Relative humidity: 50% max at 40°C [104°F]; 90% max at 20°C [68°F]						
SCCR Rating	10kA per Table SB4.1, 2009, UL 508A, maximum SCCR for unmarked components						
CE Conformity	CE (EN 60947-1 / EN 60947-7-1)						
Agency File #	UL E179129						
Accessories							
End Cover	left (open) side	DN-EMXM1EC1	25	\$15.00	DN-EMXDVEC1	25	\$15.00
	right (closed) side	DN-EMXM1EC2	25	\$15.00	DN-EMXDVEC2	25	\$15.00
Spacer	either side	DN-EMXM1SPA1	25	\$13.00	DN-EMXM1SPA1	25	\$13.00
Jumpers	2-pole	DN-2J2Y	100	\$43.00	DN-2J2Y	100	\$43.00
		DN-2J2YMN	25	\$13.00	DN-2J2YMN	25	\$13.00
	3-pole	DN-3J2Y	100	\$62.00	DN-3J2Y	100	\$62.00
		DN-3J2YMN	25	\$18.00	DN-3J2YMN	25	\$18.00
	24-pole	DN-24J2Y	5	\$28.00	DN-24J2Y	5	\$28.00
	Jumper Cutting Tool	DN-J2CUT	1	\$79.00	DN-J2CUT	1	\$79.00
Pin Protector – 4-pole	DN-EMPEG1 ***	16	\$4.00	DN-EMPEG1 ***	16	\$4.00	
35mm DIN Rail	7.5 mm high	DN-R35S1	10	\$39.00	DN-R35S1	10	\$39.00
		DN-R35S1-2	2	\$11.00	DN-R35S1-2	2	\$11.00
	15mm high	DN-R35HS1	10	\$68.00	DN-R35HS1	10	\$68.00
		DN-R35HS1-2	2	\$16.50	DN-R35HS1-2	2	\$16.50
End Bracket	DN-EB35	50	\$67.00	DN-EB35	50	\$67.00	
	DN-EB35MN	20	\$31.50	DN-EB35MN	20	\$31.50	
	DN-EB35-A	50	\$47.50	DN-EB35-A	50	\$47.50	
	DN-EB35-A-10	10	\$12.00	DN-EB35-A-10	10	\$12.00	
	DN-QEB35	50	\$42.50	DN-QEB35	50	\$42.50	
	DN-QEB35-10	10	\$11.50	DN-QEB35-10	10	\$11.50	
Angled Support Bracket	DN-ASB1	50	\$107.00	DN-ASB1	50	\$107.00	
Marking Tags	DN-LA, DN-LT, DN-EMLBL series	500/100	various	DN-LA, DN-LT, DN-EMLBL series	500/100	various	



*For copper wire only **DN-QEMXDV rated 12A for stranded wire; 11A for solid wire
***DN-EMPEG1 each piece covers and protects up to 4 unused pins
Note: For more information on accessories, see the DINnectors Accessories section of this section.

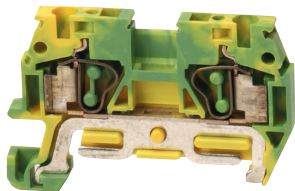
Accessories – Terminal Plugs									
*Part Number	Number of Poles	Length in [mm]	Qty	Price	*Part Number	Number of Poles	Length in [mm]	Qty	Price
DN-2PLUG	2	0.40	200	\$115.00	DN-8PLUG	8	1.60	50	\$117.00
DN-2PLUGMN		[10.2]	10	\$7.25	DN-8PLUGMN		[40.6]	5	\$14.50
DN-3PLUG	3	0.60	200	\$177.00	DN-9PLUG	9	1.80	50	\$128.00
DN-3PLUGMN		[15.2]	10	\$11.50	DN-9PLUGMN		[45.7]	5	\$15.00
DN-4PLUG	4	0.80	100	\$118.00	DN-10PLUG	10	2.00	50	\$136.00
DN-4PLUGMN		[20.3]	10	\$14.50	DN-10PLUGMN		[50.8]	5	\$17.00
DN-5PLUG	5	1.00	100	\$136.00	DN-11PLUG	11	2.20	50	\$161.00
DN-5PLUGMN		[25.4]	10	\$18.00	DN-11PLUGMN		[55.9]	5	\$19.50
DN-6PLUG	6	1.20	100	\$176.00	DN-12PLUG	12	2.40	50	\$176.00
DN-6PLUGMN		[30.5]	10	\$18.00	DN-12PLUGMN		[61.0]	5	\$20.00
DN-7PLUG	7	1.40	50	\$92.00					
DN-7PLUGMN		[35.6]	5	\$14.50					

* DN-xxPLUGs fit all DN-EMXxx & DN-QEMXxx plug-in terminal blocks.

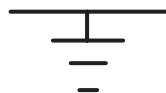
Terminal Plugs Ratings	
Voltage/Current	300V, 12A
Wire Gauge	14–22 AWG, CU only
Torque	Tightening Torque: 0.51 N·m [4.5 lb·in]
Operating Temperature	Ambient air temp: -20 to 105°C [-4 to 221°F] Relative humidity: 50% max at 40°C [104°F]; 90% max at 20°C [68°F]
Agency Approvals	UL file #: E179129



Screwless Ground Terminal Blocks



DN-QG12
(Euro QE2.5/35)



Ground terminal blocks are used to mechanically and electrically connect wires to the DIN rail by means of a conducting clamping foot. In this way, the DIN rail can function as a ground bus bar.

Ground blocks are molded in green and yellow per international standards and are 35mm DIN-rail mountable.

Ordering Information

	Part Number	Qty	Price	Part Number	Qty	Price	Part Number	Qty	Price
Green/Yellow Block	DN-QG12	10	\$32.00	DN-QG10	10	\$33.50	DN-QG8	10	\$41.00

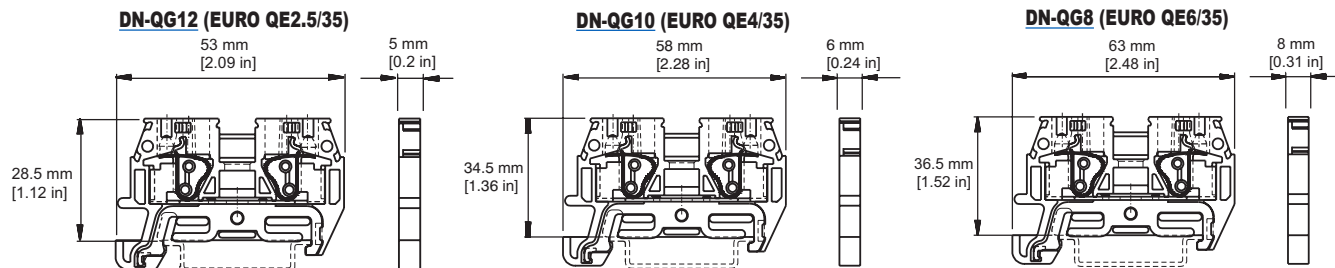
Technical Specifications

Stripping Length	12mm [0.47 in]	15mm [0.59 in]	18mm [0.71 in]
Density	200/m [60 pcs/ft]	166/m [50 pcs/ft]	125/m [38 pcs/ft]
UL Approval	24-12 AWG	24-10 AWG	22-8 AWG
VDE Approval	2.5 mm ²	4mm ²	6mm ²
Operating Temperature	Ambient air temperature: -20 to 105°C [-4 to 221°F] / Relative humidity: 50% max at 40°C [104°F]; 90% max at 20°C [68°F]		
SCCR Rating	10kA per Table SB4.1, 2009, UL 508A, Maximum short circuit current rating for unmarked components		
CE Conformity	CE (EN 60947-1 / EN 60947-2)		
Agency File #	UL E179129		

Accessories

End Cover	DN-QEC12	50	\$21.50	DN-QEC10	50	\$21.50	DN-QEC8	50	\$25.50
	DN-QEC12MN	10	\$5.25	DN-QEC10MN	10	\$5.25	DN-QEC8MN	10	\$5.75
35mm DIN Rail	DN-R35S1	10	\$39.00	DN-R35S1	10	\$39.00	DN-R35S1	10	\$39.00
	DN-R35S1-2	2	\$11.00	DN-R35S1-2	2	\$11.00	DN-R35S1-2	2	\$11.00
End Brackets	DN-EB35	50	\$67.00	DN-EB35	50	\$67.00	DN-EB35	50	\$67.00
	DN-EB35MN	20	\$31.50	DN-EB35MN	20	\$31.50	DN-EB35MN	20	\$31.50
	DN-EB35-A	50	\$47.50	DN-EB35-A	50	\$47.50	DN-EB35-A	50	\$47.50
	DN-EB35-A-10	10	\$12.00	DN-EB35-A-10	10	\$12.00	DN-EB35-A-10	10	\$12.00
	DN-QEB35	50	\$42.50	DN-QEB35	50	\$42.50	DN-QEB35	50	\$42.50
	DN-QEB35-10	10	\$11.50	DN-QEB35-10	10	\$11.50	DN-QEB35-10	10	\$11.50
Angled Support Bracket	DN-ASB1	50	\$107.00	DN-ASB1	50	\$107.00	DN-ASB1	50	\$107.00
Marking Tags	DN-QL Series	500	various	DN-QL Series	500	various	DN-QL Series	500	various

Note: For more information on accessories, see the [DINnectors Accessories](#) section of this chapter.





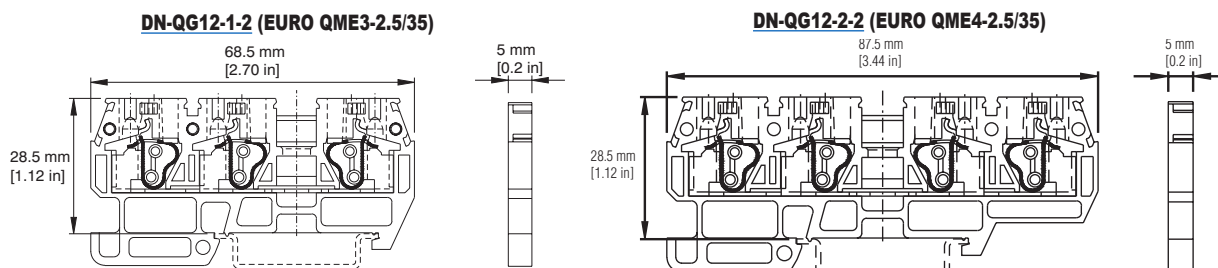
Screwless Ground Terminal Blocks



DN-QG12-1-2
(EURO QME3-2.5/35)

Ordering Information						
	Part Number	Qty	Price	Part Number	Qty	Price
Green/Yellow Block	DN-QG12-1-2	10	\$56.00	DN-QG12-2-2	10	\$64.00
Technical Specifications						
Stripping Length	12mm [0.47 in]		12mm [0.47 in]			
Density	200/m [60 pcs/ft]		200/m [60 pcs/ft]			
UL Approval	24-12 AWG		24-12 AWG			
VDE Approval	2.5 mm ²		2.5 mm ²			
Operating Temperature	Ambient air temperature: -20 to 105°C [-4 to 221°F] Relative humidity: 50% max at 40°C [104°F]; 90% max at 20°C [68°F]					
SCCR Rating	10kA per Table SB4.1, 2009, UL 508A, Maximum short circuit current rating for unmarked components					
CE Conformity	CE (EN 60947-1 / EN 60947-7-2)					
Agency File #	UL E179129					
Accessories						
End Cover	DN-QEC12-1-2	25	\$15.00	DN-QEC12-2-2	25	\$16.50
35mm DIN Rail	DN-R35S1	10	\$39.00	DN-R35S1	10	\$39.00
	DN-R35S1-2	2	\$11.00	DN-R35S1-2	2	\$11.00
End Brackets	DN-EB35	50	\$67.00	DN-EB35	50	\$67.00
	DN-EB35MN	20	\$31.50	DN-EB35MN	20	\$31.50
	DN-EB35-A	50	\$47.50	DN-EB35-A	50	\$47.50
	DN-EB35-A-10	10	\$12.00	DN-EB35-A-10	10	\$12.00
	DN-QEB35	50	\$42.50	DN-QEB35	50	\$42.50
	DN-QEB35-10	10	\$11.50	DN-QEB35-10	10	\$11.50
Angled Support Bracket	DN-ASB1	50	\$107.00	DN-ASB1	50	\$107.00
Marking Tags	DN-QL-Series	500	various	DN-QL Series	500	various

Note: For more information of accessories, see the DINnectors Accessories section of this chapter.



DINnectors Accessories

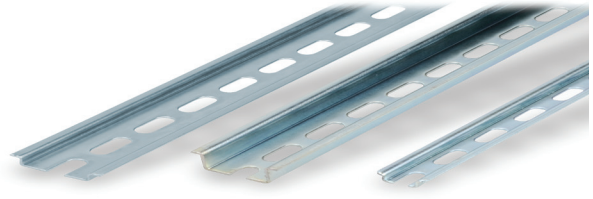
Steel DIN Rails Features

35mm wide

- Available in 1-meter lengths
- 7.5 mm-high rails primarily used to mount terminal blocks, relays, timers and small PLCs such as the BRX, CLICK, DirectLogic and Productivity series. 15mm-high rails for mounting larger and heavier components such as contactors and larger PLCs

15mm wide

- Available in 1-meter lengths
- DN-R15S1 exclusively for mounting mini terminal blocks such as the [DN-M10-A](#)



Steel DIN Rails Specifications									
	Part Number	Qty	Price	Part Number	Qty	Price	Part Number	Qty	Price
DIN Rail	DN-R35S1	10	\$39.00	DN-R35HS1	10	\$68.00	DN-R15S1	10	\$36.00
	DN-R35S1-2	2	\$11.00	DN-R35HS1-2	2	\$16.50	DN-R15S1-2	2	\$10.00
Description	DINnectors DIN rail, slotted, 35mm width, 7.5mm height, 1m length, plated steel. Package of 10.			DINnectors DIN rail, slotted, 35mm width, 15mm height, 1m length, plated steel. Package of 10.			DINnectors DIN rail, slotted, 15mm width, 5.5mm height, 1m length, plated steel. Package of 2.		
Plating	Zinc-plated and chromated								
International Standards	EN 60715, RoHs								
Suggested Mounting Screw Type	M6			M6			M4		

Aluminum DIN Rail Features

35mm wide

- Non-anodized finish
- Zinc plating and passivation (minimum thickness 6 microns)
- Lightweight, easy to cut and deburr
- Terminal blocks only
- Maximum mounting screw #10-32 or M5
- Available in 1-meter lengths

35mm wide raised

- Non-anodized finish
- Zinc plating and passivation (minimum thickness 6 microns)
- Enables users to raise terminal blocks 2¼" above the back panel
- Terminal blocks only
- Available in 1-meter lengths
- Bushing or grommet recommended for wire access hole (example Heyco UB-875 not sold by ADC)



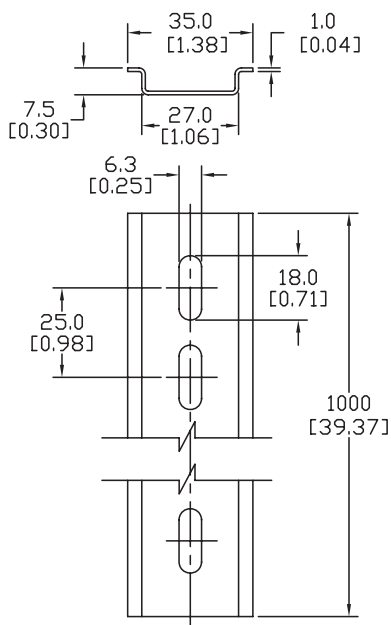
Aluminum DIN Rails Specifications						
	Part Number	Qty	Price	Part Number	Qty	Price
DIN Rail	DN-R35SAL1	10	\$60.00	DN-R35SAL2-2	2	\$38.00
	DN-R35SAL1-2	2	\$16.00			
Description	DINnectors DIN rail, slotted, 35mm width, 10mm height, 1m length, aluminum. Package of 10.			DINnectors DIN rail, slotted, 2in raised 35mm width, 7.5mm height, 1m length, aluminum. Package of 2.		
Plating	Galvanic zinc plating, non-anodized finish					
International Standards	DIN 50960, RoHs					
Suggested Mounting Screw Type	#10-32 or M5					

DINnectors[®] Accessories

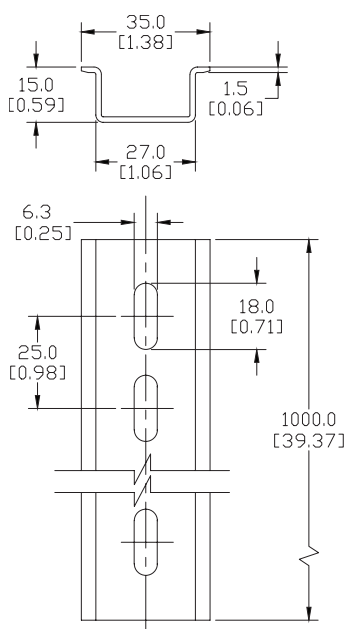
Dimensions

mm [inches]

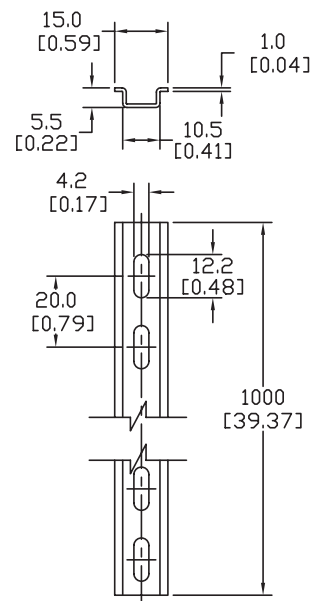
DN-R35S1



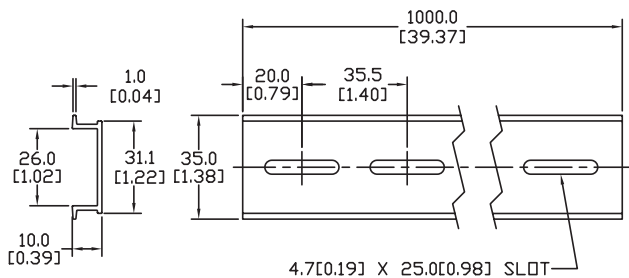
DN-R35HS1-2



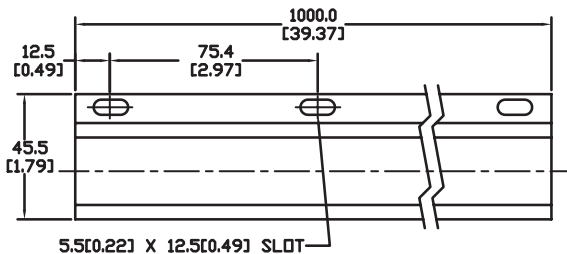
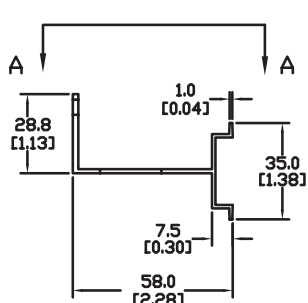
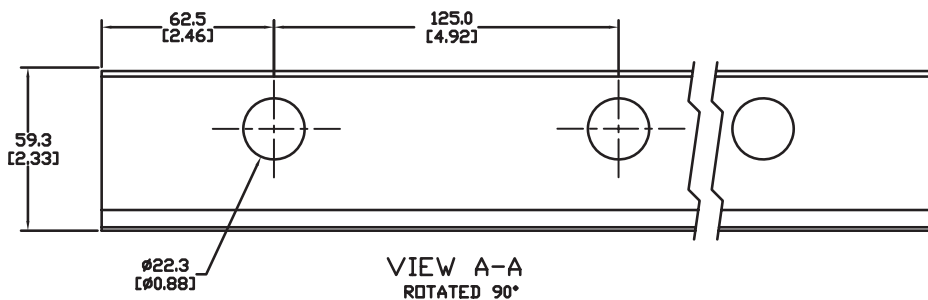
DN-R15S1



DN-R35SAL1
DN-R35SAL1-2



DN-R35SAL2-2



DINnectors Accessories

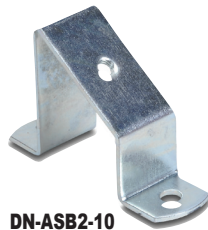
DIN rail support brackets

- Angled support brackets raise and tilt mounting rails 30 degrees from mounting surface for easier wiring
- [DN-ASB1](#) plated steel support bracket
- [DN-ASB2-10](#) cold-rolled steel treated with galvanic zinc plating and passivation

DIN rail mounting clips

- Snap small devices not made for mounting onto 35mm DIN rails
- Zinc plated steel

DIN Rail Support Brackets and Mounting Clips			
Part Number	Description	Qty	Price
DN-ASB1	30° angled DIN rail support bracket (M6-1.0 screws not included)	50	\$107.00
DN-ASB2-10	30° angled DIN rail support bracket (M6-1.0 screws included)	10	\$18.00
DN-SSB25-10	1" (25mm) DIN rail support bracket (M6-1.0 screws included)	10	\$24.50
DN-SSB50-10	2" (50mm) DIN rail support bracket (M6-1.0 screws included)	10	\$25.50
DN-SSB70-10	2.75" (70mm) DIN rail support bracket (M6-1.0 screws included)	10	\$32.00
DN-SSB90-10	3.5" (90mm) DIN rail support bracket (M6-1.0 screws included)	10	\$34.50
DN-CLIP-FM4	DIN rail mounting clip with M4 x 0.7 mm threaded hole (Screws not included)	40	\$66.00
DN-CLIP-FM4-5		5	\$9.50
DN-CLIP-FM5	DIN rail mounting clip with M5 x 0.8 mm threaded hole (Screws not included)	40	\$66.00
DN-CLIP-FM5-5		5	\$9.50

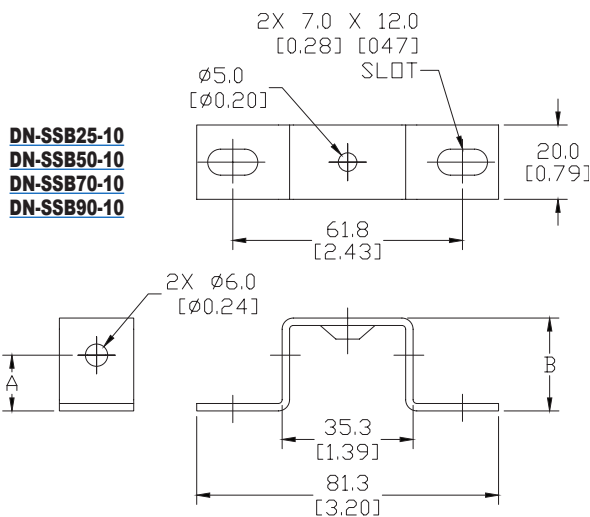
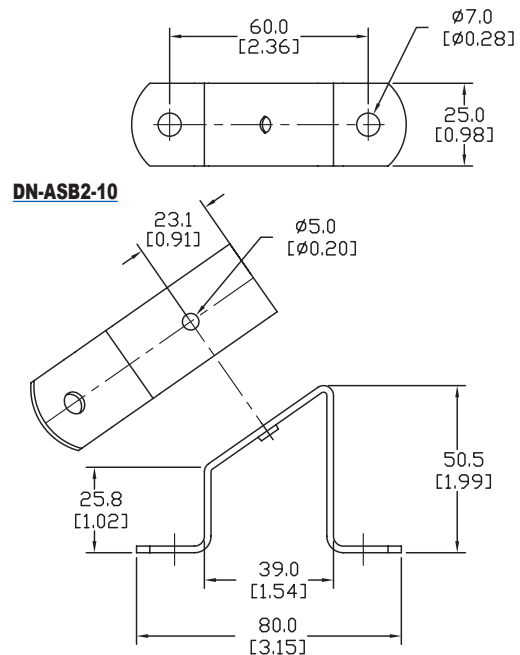
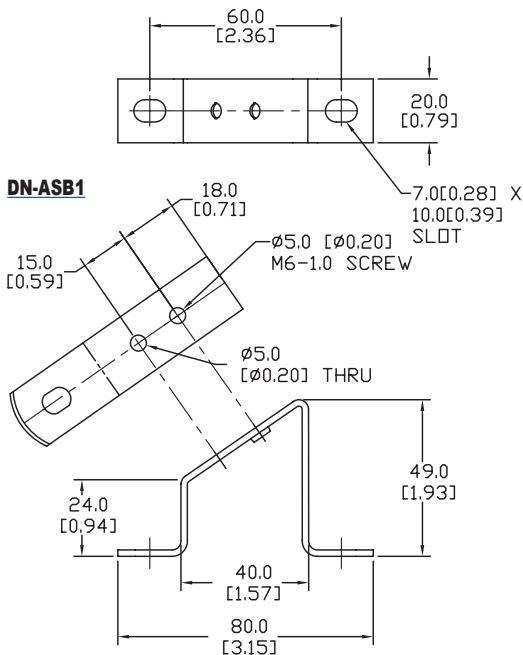
**DN-ASB1****DN-ASB2-10****DN-SSB25-10****DN-SSB50-10****DN-SSB70-10****DN-SSB90-10****DN-CLIP-FM4**
DN-CLIP-FM4-5**DN-CLIP-FM5**
DN-CLIP-FM5-5

DINnectors® Accessories

DIN Rail Support Brackets and Mounting Clips

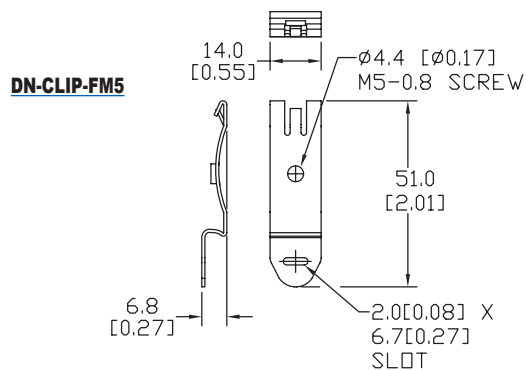
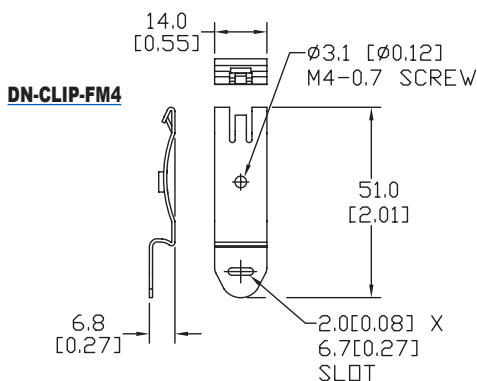
Dimensions

mm [inches]



DIN Rail Support Brackets		
Part Number	DIM A mm [inches]	DIM B mm [inches]
DN-SSB25-10	15.0 [0.59]	25.0 [0.98]
DN-SSB50-10	40.0 [1.58]	50.0 [1.97]
DN-SSB70-10	60.0 [2.36]	70.0 [2.76]
DN-SSB90-10	80.0 [3.15]	90.0 [3.54]

See our website: www.AutomationDirect.com for complete engineering drawings



DINnectors® Accessories

Jumpers

Multi-pole jumper bars for DINnector terminal blocks



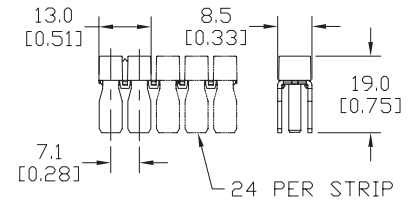
DN-12JL14B-A

Multi-pole Jumper Bars								
Part Number	Qty	Price	# of Poles	Rating		Tightening Torque	Insulation Color	For Use With Terminal Block Series
				(V)	(A)			
Screw-down Connection								
DN-2J6	100	\$76.00	2	600	65	0.5 Nm [4.4 Lb-In]	-	DN-T6
DN-3J6	100	\$132.00	3	600	65		-	
DN-4J6	100	\$169.00	4	600	65		-	
DN-55J6	1	\$26.50	55	600	65		-	
DN-24J8	5	\$41.00	24	600	50	0.6 Nm [5.3 lb-in]	Green	DN-T8
Push-in Connection								
DN-2J2Y	100	\$43.00	2	600	25	-	Orange	DN-T12-A
DN-2J2YMN	25	\$13.00	2	600	25		Orange	DN-EMX
DN-3J2Y	100	\$62.00	3	600	25		Orange	DN-Q12-A
DN-3J2YMN	25	\$18.00	3	600	25		Orange	DN-QD12-A
DN-24J2Y	5	\$28.00	24	600	25		Orange	DN-QEMX
DN-24J2YMN	5	\$28.00	24	600	25		Orange	DN-QKBD12-A
DN-2J4Y	100	\$46.00	2	600	25		Yellow	DN-T10-A
DN-2J4YMN	25	\$14.50	2	600	25		Yellow	
DN-3J4Y	100	\$74.00	3	600	25		Yellow	
DN-3J4YMN	25	\$22.00	3	600	25		Yellow	
DN-24J4Y	5	\$29.50	24	600	25		Yellow	
DN-2JL14-A	100	\$67.00	2	300	20		Red	DN-TL-A
DN-2JL14-AMN	25	\$15.00	2	300	20		Red	
DN-2JL14B-A	100	\$67.00	2	300	20		Blue	
DN-2JL14B-AMN	25	\$15.00	2	300	20		Blue	
DN-3JL14-A	100	\$99.00	3	300	20		Red	
DN-3JL14-AMN	25	\$23.00	3	300	20	Red		
DN-3JL14B-A	100	\$99.00	3	300	20	Blue		
DN-3JL14B-AMN	25	\$23.00	3	300	20	Blue		
DN-12JL14-A	10	\$26.50	12	300	20	Red		
DN-12JL14B-A	10	\$26.50	12	300	20	Blue		
DN-12JFE	10	\$60.00	12	300	25	Blue	DN-FE4	
DN-2J6Y	100	\$60.00	2	600	30	Green	DN-Q8-A	
DN-2J6YMN	25	\$15.00	2	600	30	Green		
DN-3J6Y	100	\$84.00	3	600	30	Green	DN-Q8-A	
DN-3J6YMN	25	\$23.50	3	600	30	Green		
DN-12J6Y	10	\$35.50	12	600	30	Green	DN-Q8-A	

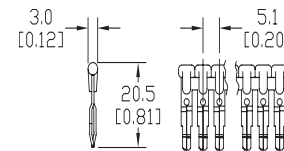
Dimensions

mm [inches]

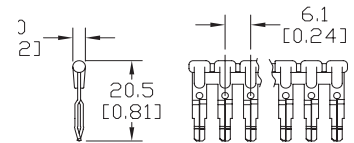
DN-24J8



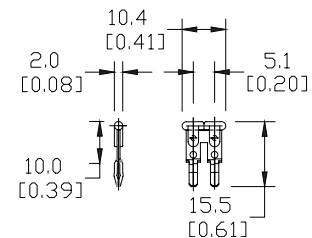
DN-xJ2Y / DN-xJ2YMN



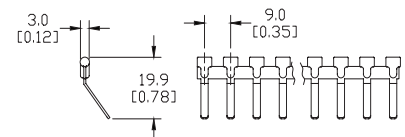
DN-xJ4Y / DN-xJ4YMN



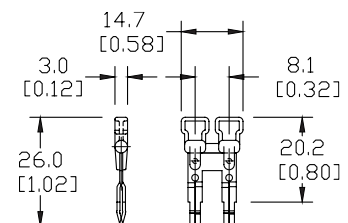
DN-xJL14 / DN-xJL14x-AMN, DN-xJ14x-A



DN-12JFE



DN-xJ6Y / DN-xJ6YMN



DINnectors® Accessories

Modifying a [DN-24J8](#) jumper bar to the required number of poles

1) Place the insulating part into the jumper bar and insert screws, based on number of poles required.
(For instance, in the following example, 5 poles are required). Click into place.

2) Using a cutting tool, cut the insulating part at the edge of the jumper bar (see below).

3) Hold the metal jumper bar and insulating jumper with two hands, placing fingers to the left and right of the pole you wish to cut, repeatedly flexing up and down (1 or 2 times should be sufficient) until the jumper bar and insulating jumper break in two.

4) Remove the small remaining piece of jumper (see below). This is important to ensure appropriate insulation distance in the case of contiguously applied jumpers in sequence. This step also facilitates the placement of a separator terminal if the bridge is positioned as the last terminal of a group.

5) The jumpers now are ready to be screwed onto [DN-T8](#) series terminal blocks.

Jumper Cutting Tools

Jumper cutting tools maintain protective covering.

Jumper Cutting Tools			
Part Number	Description	Qty	Price
DN-J2CUT	DINnector jumper cutting tool, for use with DN-2J2Y, DN-3J2Y and DN-24J2Y jumpers.	1	\$79.00
DN-J4CUT	DINnector jumper cutting tool, for use with DN-2J4Y, DN-3J4Y and DN-24J4Y jumpers.	1	\$79.00
DN-J6CUT	DINnector jumper cutting tool, for use with DN-12J6Y jumpers.	1	\$118.00
DN-JL14CUT	DINnector jumper cutting tool, for use with DN-12JL14-A and DN-12JL14B-A jumpers.	1	\$112.00
DN-JXCUT	DINnector jumper cutting tool, for use with DN-J2DIE, DN-J4DIE, DN-J6DIE, DN-JL14DIE and DN-JFEDIE dies.	1	\$76.00
DN-JFECUT	DINnector jumper cutting tool, for use with DN-12JFE jumpers.	1	\$92.00
DN-JKIT	DINnector cutting tool kit for DN series jumpers. Includes (1) DN-JXCUT cutting tool, (5) dies (DN-J2DIE, DN-J4DIE, DN-J6DIE, DN-JL14DIE, and DN-JFEDIE).	1	\$313.00
DN-TOOL2	DINnector tool kit, for use with DN series terminal blocks, includes (1) spring opening tool for DN-Q series screwless terminal blocks and (1) jumper removal tool for J2, J4, J6, and JL14 jumpers.	1	\$11.50



DN-J2CUT



DN-J4CUT



DN-JKIT



DN-TOOL2

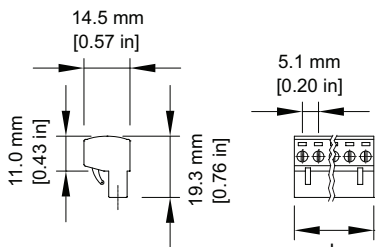
Replacement Dies		
Part Number	Description	Price
DN-J2DIE	DINnector die set, replacement. Package of 2. For use with jumper cutting tools DN-J2CUT or DN-JXCUT.	\$118.00
DN-J4DIE	DINnector die set, replacement. Package of 2. For use with jumper cutting tools DN-J4CUT or DN-JXCUT.	\$118.00
DN-JFEDIE	DINnector die set, replacement. Package of 2. For use with jumper cutting tools DN-JFECUT or DN-JXCUT.	\$92.00
DN-J6DIE	DINnector die set, replacement. Package of 2. For use with jumper cutting tools DN-J6CUT or DN-JXCUT.	\$118.00
DN-JL14DIE	DINnector die set, replacement. Package of 2. For use with jumper cutting tools DN-JL14CUT or DN-JXCUT.	\$118.00

DINnectors® Accessories

Terminal Plugs



DN-xxPLUG / DN-xxPLUGMN



Accessories – Terminal Plugs							
Plugs* Part Number	Qty	Price	Plugs* Part Number	Qty	Price	Number of Poles	Length mm [in]
DN-2PLUG	200	\$115.00	DN-2PLUGMN	10	\$7.25	2	10.2 [0.40]
DN-3PLUG	200	\$177.00	DN-3PLUGMN	10	\$11.50	3	15.2 [0.60]
DN-4PLUG	100	\$118.00	DN-4PLUGMN	10	\$14.50	4	20.3 [0.80]
DN-5PLUG	100	\$136.00	DN-5PLUGMN	10	\$18.00	5	25.4 [1.00]
DN-6PLUG	100	\$176.00	DN-6PLUGMN	10	\$18.00	6	30.5 [1.20]
DN-7PLUG	50	\$92.00	DN-7PLUGMN	5	\$14.50	7	35.6 [1.40]
DN-8PLUG	50	\$117.00	DN-8PLUGMN	5	\$14.50	8	40.6 [1.60]
DN-9PLUG	50	\$128.00	DN-9PLUGMN	5	\$15.00	9	45.7 [1.80]
DN-10PLUG	50	\$136.00	DN-10PLUGMN	5	\$17.00	10	50.8 [2.00]
DN-11PLUG	50	\$161.00	DN-11PLUGMN	5	\$19.50	11	55.9 [2.20]
DN-12PLUG	50	\$176.00	DN-12PLUGMN	5	\$20.00	12	61.0 [2.40]
Terminal Plugs Ratings							
Voltage/Current	300V, 12A						
Wire Gauge	14–22 AWG, CU only						
Torque	Tightening Torque: 0.51 N·m [4.5 lb·in]						
Usage Temperature	Ambient air temperature: -20 to 105°C [-4 to 221°F] Relative humidity: 50% max at 40°C [104°F]; 90% max at 20°C [68°F]						
Agency Approvals	UL file #: E179129						

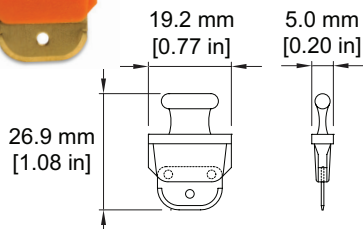
Note: To obtain the most current agency approval information, see the Agency Approval Checklist section on the specific part number's web page.

* DN-xxPLUGs fit all DN-EMXxx & DN-QEMXxx plug-in terminal blocks

Disconnect Blade

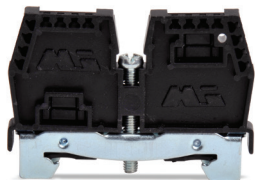


**DN-DIS-BLADE
DN-DIS-BMN**

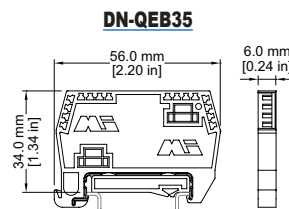
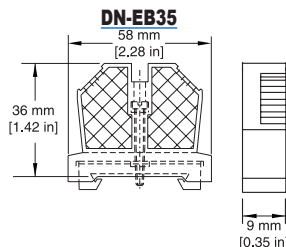
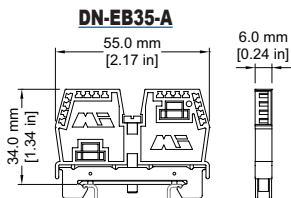
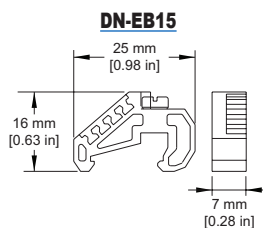


Disconnect Blade			
Part Number	Description	Qty	Price
DN-DIS-BLADE	Terminal block disconnect blade for DN-FE2, DN-FE4, DN-DIS2 and DN-DIS4	50	\$36.00
DN-DIS-BMN		10	\$9.75

End Brackets



End Brackets		
Part Number	Description	Price
DN-EB15	DINnecter snap-on end bracket, 7mm wide. Package of 100. For use with 15mm DIN rail.	\$108.00
DN-EB15MN	DINnecter snap-on end bracket, 7mm wide. Package of 20. For use with 15mm DIN rail.	\$25.50
DN-EB35	DINnecter screw-down end bracket, 9mm wide. Package of 50. For use with 35mm DIN rail.	\$67.00
DN-EB35MN	DINnecter screw-down end bracket, 9mm wide. Package of 20. For use with 35mm DIN rail.	\$31.50
DN-EB35-A	DINnecter screw-down end bracket, 6mm wide. Package of 50. For use with 35mm DIN rail.	\$47.50
DN-EB35-A-10	DINnecter screw-down end bracket, 6mm wide. Package of 10. For use with 35mm DIN rail.	\$12.00
DN-QEB35	DINnecter snap-on end bracket, 6mm wide. Package of 50. For use with 35mm DIN rail.	\$42.50
DN-QEB35-10	DINnecter snap-on end bracket, 6mm wide. Package of 10. For use with 35mm DIN rail.	\$11.50



For more information on accessories, see the "DINnectors Accessories" section of this section.

DINnectors Accessories

End Covers

Certain end covers can be used with multiple terminal block parts to cover and insulate the open side, or to put more space between adjacent blocks.

DINnectors End Covers		
Part Number	Description	Price
DN-EC1210	DINnector terminal block end cover, gray. Package of 100. For use with DN-T12 or DN-T10 series terminal blocks.	\$43.00
DN-EC1210MN	DINnector terminal block end cover, gray. Package of 25. For use with DN-T12 or DN-T10 series terminal blocks.	\$14.50
DN-EC86	DINnector terminal block end cover, gray. Package of 100. For use with DN-T8 or DN-T6 series terminal blocks.	\$47.00
DN-EC86MN	DINnector terminal block end cover, gray. Package of 25. For use with DN-T8 or DN-T6 series terminal blocks.	\$14.50
DN-EC4	DINnector terminal block end cover, gray. Package of 50. For use with DN-T4 series terminal blocks.	\$29.50
DN-EC4MN	DINnector terminal block end cover, gray. Package of 10. For use with DN-T4 series terminal blocks.	\$5.75
DN-EC1/0	DINnector terminal block end cover, gray. Package of 50. For use with DN-T1/0 series terminal blocks.	\$33.50
DN-EC1/0MN	DINnector terminal block end cover, gray. Package of 10. For use with DN-T1/0 series terminal blocks.	\$8.00
DN-DEC10	DINnector terminal block end cover, gray. Package of 50. For use with DN-D10-A series terminal blocks.	\$31.50
DN-DEC10MN	DINnector terminal block end cover, gray. Package of 10. For use with DN-D10-A series terminal blocks.	\$6.00
DN-EC14	DINnector terminal block end cover, gray. Package of 25. For use with DN-TL14 series terminal blocks.	\$18.00
DN-EC14S	DINnector terminal block end cover, gray. Package of 25. For use with DN-TL14S series terminal blocks.	\$15.00
DN-ECM10	DINnector terminal block end cover, gray. Package of 100. For use with DN-M10-A series terminal blocks.	\$43.00
DN-ECM10MN	DINnector terminal block end cover, gray. Package of 25. For use with DN-M10-A series terminal blocks.	\$14.50
DN-ECKBD	DINnector terminal block end cover, gray. Package of 100. For use with DN-KBD12 series terminal blocks.	\$43.00
DN-ECKBDMN	DINnector terminal block end cover, gray. Package of 10. For use with DN-KBD12 series terminal blocks.	\$6.00
DN-EMXM1EC1	DINnector terminal block end cover, gray. Package of 25. For use with DN-EMXM1 series terminal block leftside.	\$15.00
DN-EMXM1EC2	DINnector terminal block end cover, gray. Package of 25. For use with DN-EMXM1 series terminal block rightside.	\$15.00
DN-EMXDVEC1	DINnector terminal block end cover, gray. Package of 25. For use with DN-EMXDV series terminal block leftside.	\$15.00
DN-EMXDVEC2	DINnector terminal block end cover, gray. Package of 25. For use with DN-EMXDV series terminal block rightside.	\$15.00
DN-FESEP	DINnector terminal block end cover, gray. Package of 50. For use with DN-FE and DN-DIS series terminal blocks.	\$26.50
DN-FESEP-10	DINnector terminal block end cover, gray. Package of 10. For use with DN-FE and DN-DIS series terminal blocks.	\$5.25
DN-QEC12	DINnector terminal block end cover, gray. Package of 50. For use with DN-Q12-A or DN-QG12 series terminal blocks.	\$21.50
DN-QEC12MN	DINnector terminal block end cover, gray. Package of 10. For use with DN-Q12-A or DN-QG12 series terminal blocks.	\$5.25
DN-QEC10	DINnector terminal block end cover, gray. Package of 50. For use with DN-Q10-A or DN-QG10 series terminal blocks.	\$21.50
DN-QEC10MN	DINnector terminal block end cover, gray. Package of 10. For use with DN-Q10-A or DN-QG10 series terminal blocks.	\$5.25
DN-QEC8	DINnector terminal block end cover, gray. Package of 50. For use with DN-Q8-A or DN-QG8 series terminal blocks.	\$25.50
DN-QEC8MN	DINnector terminal block end cover, gray. Package of 10. For use with DN-Q8-A or DN-QG8 series terminal blocks.	\$5.75
DN-QEC12-1-2	DINnector terminal block end cover, gray. Package of 25. For use with DN-Q12-1-2-A series terminal blocks.	\$15.00
DN-QEC12-2-2	DINnector terminal block end cover, gray. Package of 25. For use with DN-Q12-2-2-A series terminal blocks.	\$16.50
DN-QDEC12	DINnector terminal block end cover, gray. Package of 25. For use with DN-QD12 series terminal blocks.	\$16.50

Spacers

Spacers are used to put more space between adjacent blocks.

DINnectors Spacers			
Part Number	Description	Qty	Price
DN-S1210	Spacer for DN-T12-A and DN-T10-A series terminal blocks	100	\$51.00
DN-S1210MN		25	\$16.00
DN-S86	Spacer for DN-T8 and DN-T6 series terminal blocks	100	\$61.00
DN-S86MN		25	\$14.00
DN-EMXM1SPA1	Spacer for DN-EMXM1 and DN-QEMXM1 single-level plug-in terminal blocks	25	\$13.00
DN-EMXDVSPA1	Spacer for DN-EMXDV and DN-QEMXDV double-level plug-in terminal blocks	25	\$14.50
DN-FESPA	Spacer for DN-FE sockets and DN-DIS disconnects	50	\$26.50
DN-FESPA-10		10	\$5.25

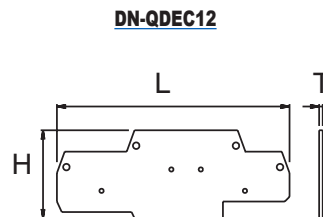
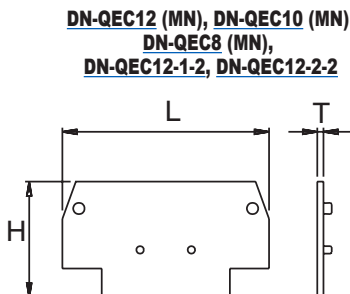
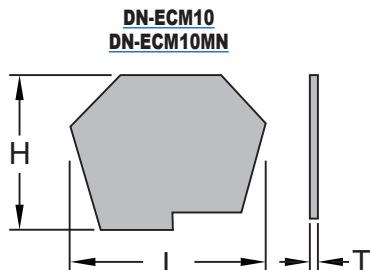
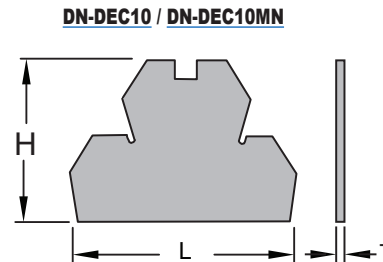
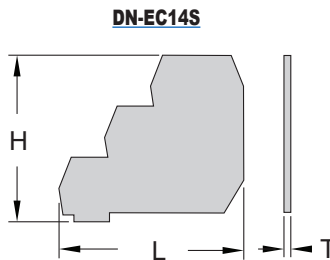
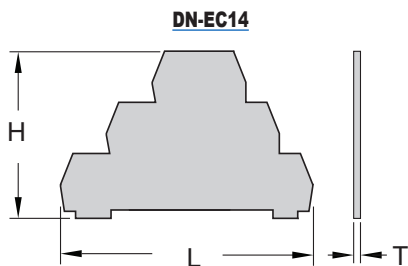
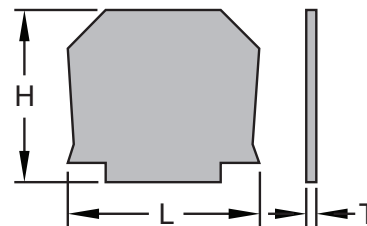
Top Covers

DINnectors Top Covers				
Part Number	Description	For Use With	Qty	Price
DN-C12	Top cover, clear, printed electrical symbol.	DN-T12-A	100	\$62.00
DN-C12MN			25	\$14.00
DN-C10	Top cover, clear, printed electrical symbol.	DN-T10-A	100	\$62.00
DN-C10MN			25	\$14.00
DN-C86	Top cover, clear, printed electrical symbol.	DN-T8 DN-T6	100	\$62.00
DN-C86MN			25	\$14.00
DN-DC10	Top cover, clear, printed electrical symbol.	DN-D10	100	\$60.00
DN-DC10MN			25	\$14.00
DN-MC10	Top cover, clear, printed electrical symbol.	DN-M10	100	\$64.00
DN-MC10MN			25	\$14.00

DINnectors[®] Accessories

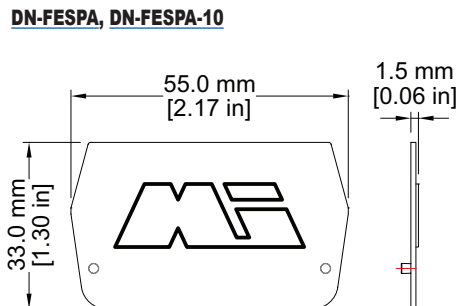
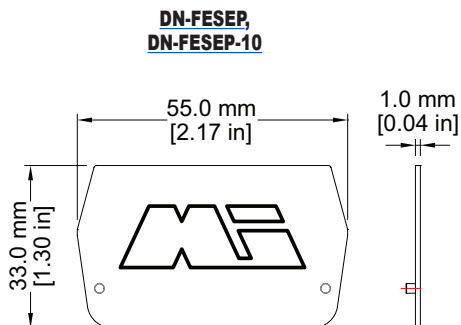
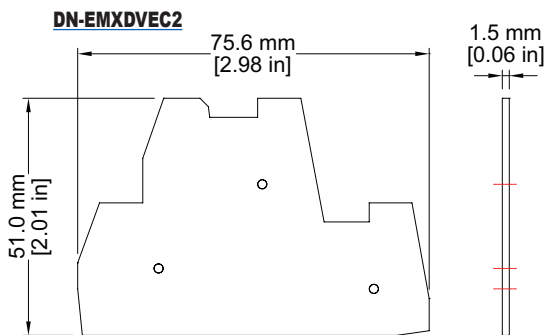
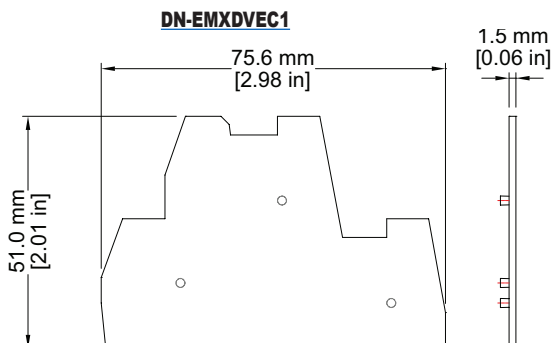
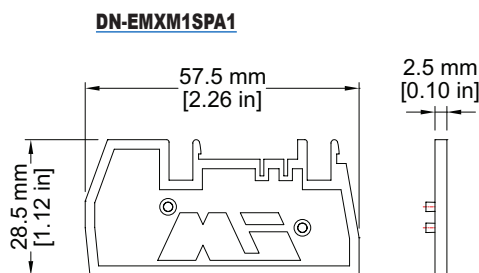
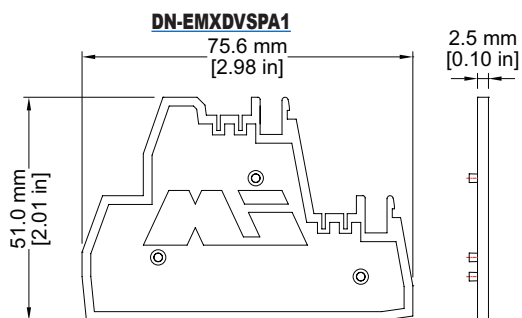
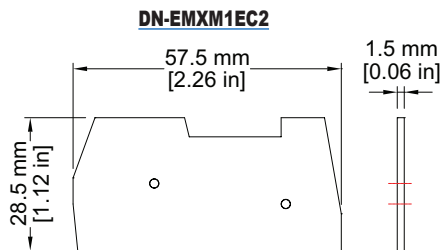
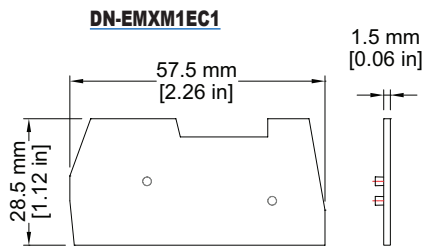
Part Number		Length mm[in]	Height mm [in]	Thickness mm [in]		
DN-EC1210	DN-EC1210MN	44 [1.73]	35 [1.38]	1.5 [0.06]		
DN-S1210	DN-S1210MN	55 [2.17]	44 [1.73]			
DN-EC86	DN-EC86MN	50 [1.97]	43 [1.69]			
DN-S86	DN-S86MN	55 [2.17]	49 [1.93]			
DN-EC4	DN-EC4MN	56 [2.21]	48 [1.89]			
DN-EC1/0	DN-EC1/0MN	62 [2.44]	60 [2.36]			
DN-DEC10	DN-DEC10MN	72 [2.80]	49 [1.93]			
DN-EC14	-	78 [3.08]	55 [2.17]			
DN-EC14S	-	55 [2.17]	50 [1.97]			
DN-ECM10	DN-ECM10MN	32 [1.26]	27 [1.06]			
DN-ECKBD	DN-ECKBDMN	52 [2.05]	34.5 [1.36]			
DN-EMXM1EC1	DN-EMXM1EC2	as shown on next page		1.5 [0.06]		
DN-EMXDVEC1	DN-EMXDVEC2					
DN-EMXDVSPA1	DN-EMXM1SPA1					
DN-FESPA	DN-FESPA-10					
DN-FESEP	DN-FESEP-10	as shown on next page				
DN-QEC12	DN-QEC12MN				50 [1.97]	23 [0.9]
DN-QEC10	DN-QEC10MN				57.4 [2.26]	33.6 [1.32]
DN-QEC8	DN-QEC8MN				63 [2.48]	38.5 [1.52]
DN-QEC12-1-2	-	68.5 [2.70]	28.5 [1.12]			
DN-QEC12-2-2	-	87.5 [3.44]	28.5 [1.12]			
DN-QDEC12	-	98 [3.86]	37 [1.46]			

DN-EC1210 (MN), DN-EC86 (MN), DN-EC4 (MN), DN-EC1/0 (MN), DN-ECKBD (MN), DN-S1210 (MN), DN-S86 (MN)



DINnectors Accessories

Dimensional Drawings



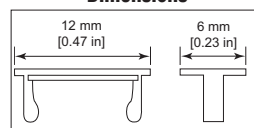

DINnectors Accessories

Marking Tags Cross Reference Charts - Screwless

DINector Marking Tags Cross Reference - Screwless				
<i>Block Type</i>	<i>DN-QL</i>	<i>DN-LA</i>	<i>DN-LT</i>	<i>DN-EMLBL</i>
<i>DN-Q12</i>	X	-	-	-
<i>DN-Q10</i>	X	-	-	-
<i>DN-Q8</i>	X	-	-	-
<i>DN-QD12</i>	X	-	-	-
<i>DN-Q12-1-2</i>	X	-	-	-
<i>DN-Q12-1-2L</i>	X	-	-	-
<i>DN-Q12-1-2D</i>	X	-	-	-
<i>DN-QKBD</i>	X	-	-	-
<i>DN-Q12-2-2</i>	X	-	-	-
<i>DN-Q12-2-2L</i>	X	-	-	-
<i>DN-Q12-2-2D</i>	X	-	-	-
<i><u>DN-QEMXM1</u></i>	-	X	X	X
<i><u>DN-QEMXDV</u></i>	-	X	X	X
<i><u>DN-QG12</u></i>	X	-	-	-
<i><u>DN-QG10</u></i>	X	-	-	-
<i><u>DN-QG8</u></i>	X	-	-	-
<i><u>DN-QG12-1-2</u></i>	X	-	-	-
<i><u>DN-QG12-2-2</u></i>	X	-	-	-

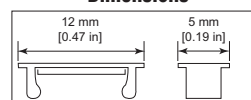
Marking Tags

Marking Tags DN-L Series			
Part Number	Marking Sequence	Qty	Price
DN-L50	1-50	500	\$56.00
DN-L100	51-100	500	\$56.00
DN-L150	101-150	500	\$56.00
DN-L200	151-200	500	\$56.00
DN-L250	201-250	500	\$56.00
DN-L300	251-300	500	\$56.00
DN-L350	301-350	500	\$56.00
DN-L400	351-400	500	\$56.00
DN-L450	401-450	500	\$56.00
DN-LB	Blank	500	\$38.00
DN-LS	L1, L2, L3, L, N, GND, +, -, COM,COM*	500	\$56.00

Dimensions


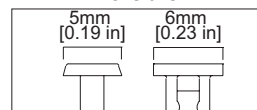
- The marking sequence of 50 tags (i.e. 101-150) is printed 10 times in each package of 500.
- The DN-L tags fit all DINnectors 6mm wide and wider.
- There will be a gap between tags on blocks wider than 6mm.
- Material: Thermoplastic with heat embossed black print.

Marking Tags DN-LA Series			
Part Number	Marking Sequence	Qty	Price
DN-LA100	1-100	500	\$56.00
DN-LA200	101-200	500	\$56.00
DN-LA300	201-300	500	\$56.00
DN-LA400	301-400	500	\$56.00
DN-LAB	Blank Tags	500	\$56.00
DN-LAS	L1, L2, L3, L, N, GND, +, -, COM,COM*	500	\$56.00

Dimensions


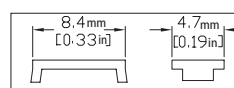
- The marking sequence of 100 tags (i.e. 1-100) is printed five times in each package of 500.
- The DN-LA tags fit all DINnectors 5mm wide and wider. There will be a gap between tags on blocks wider than 5mm.
- Material: Thermoplastic with heat embossed black print.

Marking Tags DN-LAT Series			
Part Number	Marking Sequence	Qty	Price
DN-LAT100-A	1-100	500	\$49.00
DN-LAT200-A	101-200	500	\$49.00
DN-LAT300-A	201-300	500	\$49.00
DN-LAT400-A	301-400	500	\$49.00
DN-LAT500-A	401-500	500	\$49.00
DN-LAT600-A	501-600	500	\$49.00
DN-LATB-A	Blank Tags	500	\$35.50
DN-LATS-A	L1, L2, L3, L, N, +, -, COM,COM*	500	\$49.00

Dimensions


- The marking sequence of 500 tags (i.e. 1-100) is printed five times in each package of 500.
- Material: Thermoplastic with heat embossed black print.

Marking Tags DN-QL Series			
Part Number	Marking Sequence	Qty	Price
DN-QL100	1-100	500	\$42.50
DN-QL200	101-200	500	\$42.50
DN-QL300	201-300	500	\$42.50
DN-QL400	301-400	500	\$42.50
DN-QL500	401-500	500	\$42.50
DN-QLB	Blank Tags	500	\$36.00
DN-QLS	L1, L2, L3, L, N, +, -, COM,COM*	500	\$49.00

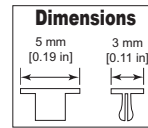
Dimensions


- The marking sequence of 500 (i.e. 1-100) is printed five times in each package of 500.
- Material: Thermoplastic with heat embossed black print.

DINnectors Accessories

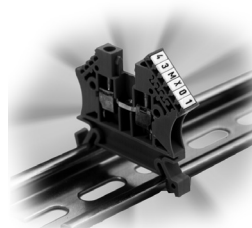
Marking Tags continued

Marking Tags DN-LT Series			
Part Number	Marking Sequence	Qty	Price
DN-LT15	1-5	100	\$10.00
DN-LT60	6-0	100	\$10.00
DN-LT1	1	100	\$10.00
DN-LT2	2	100	\$10.00
DN-LT3	3	100	\$10.00
DN-LT4	4	100	\$10.00
DN-LT5	5	100	\$10.00
DN-LT6	6	100	\$10.00
DN-LT7	7	100	\$10.00
DN-LT8	8	100	\$10.00
DN-LT9	9	100	\$10.00
DN-LT0	0	100	\$10.00
DN-LTBLNK	Unprinted	100	\$10.00
DN-LTA	A	100	\$10.00
DN-LTB	B	100	\$10.00
DN-LTC	C	100	\$10.00
DN-LTD	D	100	\$10.00
DN-LTE	E	100	\$10.00
DN-LTF	F	100	\$10.00
DN-LTG	G	100	\$10.00
DN-LTH	H	100	\$10.00
DN-LTI	I	100	\$10.00
DN-LTJ	J	100	\$10.00
DN-LTK	K	100	\$10.00
DN-LTL	L	100	\$10.00
DN-LTM	M	100	\$10.00
DN-LTN	N	100	\$10.00
-	-	-	-
DN-LTP	P	100	\$10.00
DN-LTQ	Q	100	\$10.00
DN-LTR	R	100	\$10.00
DN-LTS	S	100	\$10.00
DN-LTT	T	100	\$10.00
DN-LTU	U	100	\$10.00
DN-LTV	V	100	\$10.00
DN-LTW	W	100	\$10.00
DN-LTX	X	100	\$10.00
DN-LTY	Y	100	\$10.00
DN-LTZ	Z	100	\$10.00
DN-LTGND	⊕	100	\$10.00
DN-LTPOS	+	100	\$10.00
DN-LTNEG	-	100	\$10.00
DN-LTAC	~	100	\$10.00
DN-LTDC	=	100	\$10.00

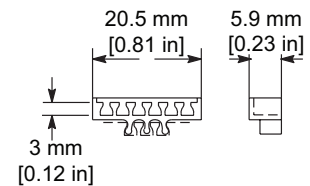


- These marking tags allow the flexibility of creating custom marking sequences on site.
- The DN-M series supports a maximum of three digits (tags), while other DINnectors support up to four digits (tags).
- Material: Thermoplastic with heat embossed black print.

DN-MTA marking tag adapter



DN-MTA dimensions



Part Number	Description	Qty	Price
DN-MTA	Marking tag adapter holds up to six DN-LT tags	50	\$14.50

Note: [DN-MTA](#) adapter does not fit [DN-T12-A](#) terminal blocks.

DINnectors® Accessories

Terminal Marking Accessories



DN-EMLBL1



DN-EMLBL2



DN-EMLBL3

Part Number	Description	For Use With	Qty	Price
DN-EMLBL1	Blank labels	DN-EMPEG1 pin protectors for DN-xEMxx plug-in terminal blocks	100	\$9.25
DN-EMLBL2	Labels printed 1 – 12		100	\$13.00
DN-EMLBL3	Labels printed 13 – 24		100	\$13.00

Marking Pen – for terminal and wire marking tags

- Permanent
- Smudge-proof
- Waterproof
- Weatherproof
- Lightfast (won't fade)
- Dries in seconds (excellent for left-handed users)
- Dry-safe (pen can be left uncapped for days without drying out)
- Low odor ink

Part Number	Description	Qty	Price
DN-MP	Staedtler-Mars marking pen, for use with blank marking tags. Permanent Ink, fine tip.	1	\$4.50



Marking pen

Wire Marking Accessories



DN-WMTAG1 wire tags & DN-WM-x wire tag holders

Part Number	Description	For Use With	Qty	Price
DN-WMTAG1	Wire tag – blank	all DN-WM-x wire tag holders	525	\$60.00
DN-WM-1	Wire tag holder, clear, 12mm length, 0.051–0.118 in diameter; for 22–16 AWG wire	DN-WMTAG1	200	\$12.50
DN-WM-2	Wire tag holder, clear, 12mm length, 0.098–0.196 in diameter; for 16–11 AWG wire		200	\$12.50
DN-WM-3	Wire tag holder, clear, 12mm length, 0.157–0.393 in diameter; for 13–5 AWG wire		100	\$8.25
DN-WM-4	Wire tag holder, clear, 12mm length, 0.314–0.629 in diameter; for 5AWG wire		100	\$7.75