

Schmersal

Two-Hand Control

Replacement Pushbuttons


SCHMERSAL

EDRR40RT

EDP55SW

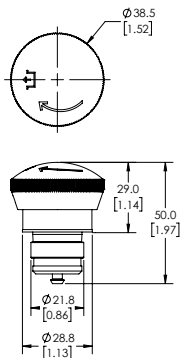
| Schmersal Two-Hand Control Replacement Pushbuttons* | | |
|---|--|---|
| Part Number | EDRR40RT ** | EDP55SW |
| Price | \$31.50 | \$40.50 |
| Description | Emergency stop pushbutton with mounting flange, push to latch, twist and pull to unlatch, front plate mounting | Momentary pushbutton with mounting flange, front plate mounting |
| Front Ring Color | Gold | Silver |
| Mounting Diameter | 22.3 mm [0.88 in] | 22.3 mm [0.88 in] |
| Actuating Stroke | 5mm [0.20 in] | 5mm [0.20 in] |
| Dome Material | Anodized aluminum | Anodized aluminum |
| Front Ring Material | Anodized aluminum | Anodized aluminum |
| Front Panel Thickness | 1.5 to 6 mm [0.06 to 0.24 in] | 1.5 to 6 mm [0.06 to 0.24 in] |
| Weight | 91g [3.20 oz] | 91g [3.20 oz] |
| Mounting Screws Tightening Torque | 0.6 N•m [0.44 lb•ft] | 0.6 N•m [0.44 lb•ft] |
| Ambient Temperature | -25°C to +75°C [-13°F to +167°F] | -25°C to +75°C [-13°F to +167°F] |
| Shock Resistance | 30g / 18ms | 30g / 18ms |
| Ingress Protection Rating | IP65 | IP65 |
| Mechanical Life | 100,000 operations | 1,000,000 operations |
| Standards | EN 60947-5-1; EN 60947-1; UL File E57648 | EN 60947-5-1; UL File 57648 |
| Dimensional Drawing | PDF | PDF |

* Operator only. Purchase contact blocks separately.

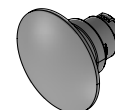
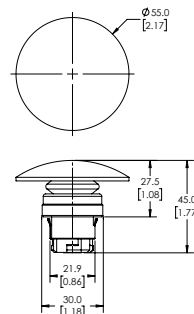
** Part number EFR is required to use this operator

Dimensions

mm [in]

EDRR40RT


ISOMETRIC VIEW

EDP55SW


ISOMETRIC VIEW

| Schmersal Legend Plate | | | |
|------------------------|--------|--|---------------------|
| Part Number | Price | Description | Dimensional Drawing |
| MDP-8.1 | \$4.00 | Schmersal legend plate, thermoplastic, round, yellow field, yellow background, blank legend plate. | PDF |


MDP-8.1



SCHMERSAL Contact Blocks



EF03.2



EF10.1



EF103.2



EF220.2



EF303.2



EFM

| Contact Blocks | | | | | | | | |
|---------------------------|---------|------|---------------------|-----------------|-------------------|---------------------|----------------|----------------|
| Part Number | Price | Qty. | Drawing Link | Contacts | Mounting Position | Travel Diagram (mm) | Wiring Diagram | Application |
| EF10.1* | \$9.25 | 1 | PDF | 1 N.C. | 1 | | | Standard |
| EF10.2* | \$9.25 | 1 | PDF | | 2 | | | |
| EF10.3* | \$9.25 | 1 | PDF | | 3 | | | |
| EF03.1 | \$9.25 | 1 | PDF | 1 N.O. | 1 | | | |
| EF03.2 | \$9.25 | 1 | PDF | | 2 | | | |
| EF03.3 | \$9.25 | 1 | PDF | | 3 | | | |
| EF110.1* | \$14.00 | 1 | PDF | 2 N.C. | 1 | | | |
| EF110.2* | \$14.50 | 1 | PDF | | 2 | | | |
| EF110.3* | \$14.50 | 1 | PDF | | 3 | | | |
| EF033.1 | \$14.50 | 1 | PDF | 2 N.O. | 1 | | | |
| EF033.2 | \$14.50 | 1 | PDF | | 2 | | | |
| EF033.3 | \$14.50 | 1 | PDF | | 3 | | | |
| EF103.1* | \$11.50 | 1 | PDF | 1 N.C. / 1 N.O. | 1 | | | |
| EF103.2* | \$11.50 | 1 | PDF | | 2 | | | |
| EF103.3* | \$11.50 | 1 | PDF | | 3 | | | |
| EF220.1** | \$14.50 | 1 | PDF | 2 N.C. | 1 | | | Emergency Stop |
| EF220.2** | \$14.50 | 1 | PDF | | 2 | | | |
| EF220.3** | \$14.50 | 1 | PDF | | 3 | | | |
| EF303.1** | \$11.50 | 1 | PDF | 1 N.C. / 1 N.O. | 1 | | | |
| EF303.2** | \$11.50 | 1 | PDF | | 2 | | | |
| EF303.3** | \$11.50 | 1 | PDF | | 3 | | | |

*Not suitable for Emergency Stop devices

**Not suitable for maintained selector switches NWS/NWT

Travel Diagram Legend

= contact closed

= contact open

Numbers indicate distance in mm

| Mounting Flange | | | |
|---------------------|--------|--|---------------------|
| Part Number | Price | Description | Drawing Link |
| EFM | \$5.00 | Schmersal mounting flange, replacement. For use with E and N series pushbuttons. | PDF |

Safety Products



Warning: Safety products sold by AutomationDirect are Safety components only. The purchaser/installer is solely responsible for the application of these components and ensuring all necessary steps have been taken to assure each application and use meets all performance and applicable safety requirements and/or local, national and/or international safety codes as required by the application. AutomationDirect cannot certify that our products, used solely or in conjunction with other AutomationDirect or other vendors' products, will assure safety for any application. Any person using or applying any products sold by AutomationDirect is responsible for learning the safety requirements for their individual application and applying them, and therefore assumes all risks, and accepts full and complete responsibility, for the selection and suitability of the product for their respective application.

AutomationDirect does not provide design or consulting services, and cannot advise whether any specific application or use of our products would ensure compliance with the safety requirements for any application.