



# Specialty Cable Ties

## Nylon Releasable Tab Cable Ties

These ties have a tongue for temporary cabling/fixing applications, enabling the tie to be reused.

## Features

- UL 94: V2 self-extinguishing nylon
- Suitable for indoor applications
- Rounded edges to avoid cable damage
- Operating temperature: -15 to +75°C [+5 to +167°F]

## Agency Approvals

- CE



### Nylon Releasable Tab Cable Ties

Part Number	Pcs/Bag	Price	Color	Length		Width		Min. Bundle Ø		Max. Bundle Ø		Tensile Strength	
				mm	in	mm	in	mm	in	mm	in	Kg	lb
<a href="#">RIA.2.232</a>	100	\$6.00	Natural	200	7.87	7.5	0.30	10	0.39	50	1.97	36	79.37
<a href="#">RIA.3.232</a>	100	\$6.00	Black	200	7.87	7.5	0.30	10	0.39	50	1.97	36	79.37
<a href="#">RIA.2.231</a>	100	\$6.25	Natural	250	9.84	7.5	0.30	10	0.39	65	2.56	36	79.37
<a href="#">RIA.3.231</a>	100	\$6.75	Black	250	9.84	7.5	0.30	10	0.39	65	2.56	36	79.37
<a href="#">RIA.2.233</a>	100	\$7.00	Natural	280	11.02	7.5	0.30	10	0.39	76	2.99	36	79.37
<a href="#">RIA.3.233</a>	100	\$7.75	Black	280	11.02	7.5	0.30	10	0.39	76	2.99	36	79.37
<a href="#">RIA.2.234</a>	100	\$8.75	Natural	360	14.17	7.5	0.30	10	0.39	100	3.94	36	79.37
<a href="#">RIA.3.234</a>	100	\$8.75	Black	360	14.17	7.5	0.30	10	0.39	100	3.94	36	79.37

## Nylon Lashing Cable Tie

This nylon PA 6.6 wiring cable tie has a link above the head for inserting the left over tail which, after installation, does not need to be cut, thereby making installation faster. It can be buttonhole inserted through the teeth in the insert of the cable tie.

## Features

- UL 94: V2 self-extinguishing nylon
- Suitable for indoor applications
- Rounded edges to avoid cable damage
- Operating temperature: -15 to +85°C [+5 to +185°F]

## Agency Approvals

- CE



### Nylon Lashing Cable Tie

Part Number	Pcs/Bag	Price	Color	Length		Width		Min. Bundle Ø		Max. Bundle Ø		Tensile Strength	
				mm	in	mm	in	mm	in	mm	in	Kg	lb
<a href="#">ASO.3.251</a>	50	\$14.00	Black	500	19.69	12.5	0.49	10	0.39	140	5.51	130	286.60

## Screw Mount Cable Tie

The eyelet tie is designed to tie cable bundles onto even sharp-edged supports, by rivets or screws [not included] inserted through the eyelet.

## Features

- UL 94: V2 self-extinguishing nylon
- Suitable for indoor applications
- Rounded edges to avoid cable damage
- Operating temperature: -5 to +85°C [+23 to +185°F]

## Agency Approvals

- CE



### Screw Mount Cable Tie

Part Number	Pcs/Bag	Price	Color	Length		Width		Mounting Head Hole		Min. Bundle Ø		Max. Bundle Ø		Tensile Strength	
				mm	in	mm	in	mm	in	mm	in	mm	in	Kg	lb
<a href="#">OCH.2.2123</a>	100	\$3.25	Natural	200	7.87	4.5	0.18	5	0.20	3	0.12	51	2.01	≥ 22	≥ 48.50



# Tools and Accessories

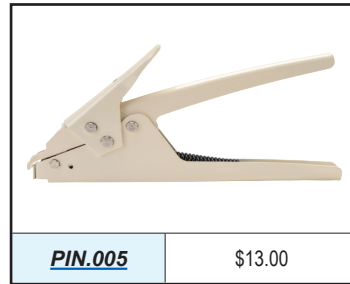
## Cable Tie Cutting Tool

The special angle of this cutter's tips enables clean cuts of the ties to sizes between 2.5 and 12.5 mm in width, maintaining the wired electric cables intact. The cutter can also be used for cutting cables.



## Collar Fastening Metal Plier

This tool makes it easier to tighten and cut collars. Use with Double-headed Cable Ties. Leaves a short length of tail close to the head. For use with up to 9mm wide cable ties.

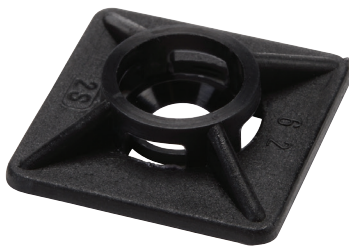


## Cable Tie Gun Installation Tool

For use with cable ties up to 5mm wide. This tool helps to adjust the preload and cut the tie. Tightening torque of 2.5 kg to 12kg.



## Bi-directional Nylon Square Bases



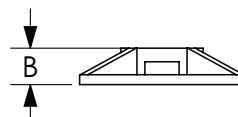
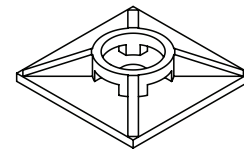
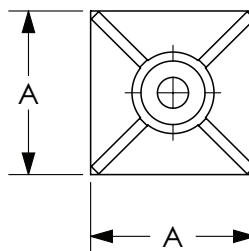
**BAS.xMT.507**



**BAS.x.406**

Note: Screw/mount not included

Bi-directional Nylon Square Bases						
Part Number	Pcs/ Bag	Price	Color	Dual Adhesive	Dimensions	
					A	B
<b><u>BAS.2MT.507</u></b>	100	\$6.75	Natural	Yes	18.8 mm [0.74 in]	4.4 mm [0.17 in]
<b><u>BAS.3MT.507</u></b>	100	\$6.75	Black	Yes		
<b><u>BAS.2MT.508</u></b>	100	\$9.25	Natural	Yes	26.5 mm [1.04 in]	5.9 mm [0.23 in]
<b><u>BAS.3MT.508</u></b>	100	\$9.25	Black	Yes		
<b><u>BAS.2.406</u></b>	100	\$3.00	Natural	No		
<b><u>BAS.3.406</u></b>	100	\$3.00	Black	No		





# Cable Ties Family Overview

## General Purpose Nylon Cable Ties



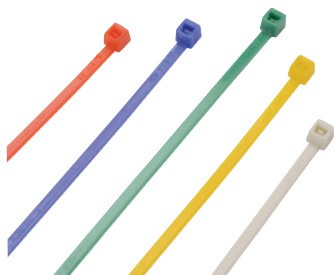
SapiSelco general purpose Nylon 6.6 cable ties are slotted and held in place by the resistance of the elastic tooth against the rack. These cable ties are resistant to solvents and reagents, oil, gasoline, and hydrocarbons when used at low temperatures, in low concentrations, and for short periods of time. Assortment Kit available.



These ties are low-cost, releasable, and reusable cable ties, suitable for lightweight loads.

The double-locking head enables securing two cable bundles with one tie. The body is completely rounded to eliminate all sharp edges guaranteeing reliable performance every time.

## Colored Nylon Cable Ties



SapiSelco colored Nylon 6.6 cable ties are useful in applications that require distinct identifiers. These ties are colored with inorganic dyes and are resistant to solvents and reagents, oil, gasoline, and hydrocarbons when used at low temperatures, in low concentrations, and for short periods of time. Assortment Kit available.

## Stainless Steel Tooth Ties



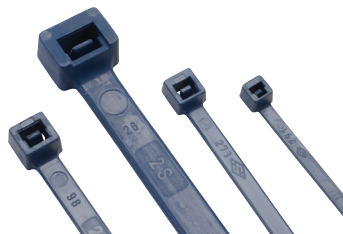
SapiSelco stainless steel tooth ties are forged from nylon and hardened stainless steel with added Molybdenum. This ensures extremely high mechanical strength and optimal resistance to corrosion. A single central raised section makes this tie particularly flexible, while guaranteeing maximum strength at the same time.

## UV Resistant Cable Ties



Exposure to sun and ultraviolet rays causes deterioration in nylon. SapiSelco specialty Nylon UV Resistant cable ties can resist and endure the harsh conditions of outdoor applications for up to 10 years. These ties can withstand temperatures up to 125°C [257°F].

## Metal Detector Readable Cable Ties



These ties are fabricated with a special composite of 6.6 polyamide and metal powder and are sensitive to electromagnetic fields. They are recommended in the food, pharmaceutical and chemical industry. They are useful in applications where, for safety reasons, it is necessary for a metal detector to be able to detect even very small fragments of these ties that may be mixed in with products.

## Specialty Cable Ties



Nylon Releasable Tab



Screw Mount



Low Temp



Nylon Lashing Cable Tie



Identification Ties



Double-headed [Collars]

## Tools and Accessories



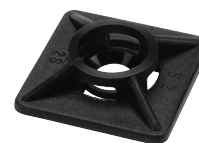
Cable Tie Cutting Tool



Collar Fastening Metal Plier



Cable Tie Gun Installation Tool



Bi-directional Nylon Square Bases