

# IDEM Solenoid Interlock Accessories

## Actuators

- 4 available keys
- All keys are 316 stainless steel
- Flexible key options available
- Lockout actuator available

**140107**



**140108**



**140110**



**140111**



**140130**



**140123**



IDEM Interlock Safety Switch Actuator Tongue (Keys)							
Part Number	Price	Description	Use with:		Weight (lbs)	Minimum Entry Radius	Dimensions
			KLP/KLM/KL1/KLTM	KL3-SS/KLT-SS			
<b>140107</b>	\$11.00	40mm mounting hole spacing, 90 degree stainless steel key/mounting tab	✓	✓	0.07	175mm	Figure 1
<b>140108</b>	\$10.50	20mm mounting hole spacing, straight stainless steel key with plastic stop	✓	✓	0.07	175mm	Figure 2
<b>140110</b>	\$38.50	40mm mounting hole spacing, stainless steel key with black-painted aluminum flexible mounting tab	✓	✓	0.16	100mm	Figure 3
<b>140111</b>	\$78.00	40mm mounting hole spacing, stainless steel key with mirror polished stainless steel flexible mounting tab	✓	✓	0.22	100mm	Figure 3
<b>140130</b>	\$54.00	IDEM lockout actuator, stainless steel, for use with all IDEM tongue (key) switches	✓	✓	0.10	NA	Figure 4
<b>140123</b>	\$21.50	IDEM anti-tamper manual release key, for use with KL3 and KLT series safety switches		✓	0.05	NA	Figure 5

## Accessories

- Gate bolt kits provide a sliding latch and lockout for swinging or sliding doors
- Comes with handle and flat actuator
- Sliding action prevents accidental closure
- Requires four M5 x 35mm mounting screws (not included)
- Gate bolt kit materials: ABS plastic handle; mild steel yellow plate; aluminum black base; mild steel plated bar (inserts into guide); stainless steel guide and key

**GBL-1-210001**



**GBL-1-210002**



**GB-210005**



**GB-210006**



IDEM Interlock Safety Switch Accessories						
Part Number	Price	Description	Use with:		Weight (lb)	Dimensions
			KLP/KLM	GBL-1		
<b>GBL-1-210001</b>	\$140.00	IDEM gate bolt, left hand version, for use with KLP and KLM series safety switches. Includes actuating tongue (key).	✓		4.12	Figure 6
<b>GBL-1-210002</b>	\$140.00	IDEM gate bolt, right hand version, for use with KLP and KLM series safety switches. Includes actuating tongue (key).	✓		4.12	Figure 7
<b>GB-210005</b>	\$19.50	IDEM rear escape handle, for use with GBA-1 and GBL-1 series gate bolts		✓	0.1	Figure 8
<b>GB-210006</b>	\$19.50	IDEM spring loaded catch, for use with GBA-1 and GBL-1 series gate bolts		✓	0.08	Figure 9

# IDEM Solenoid Interlock Safety Accessories

## Dimensions

mm [in]

Figure 1

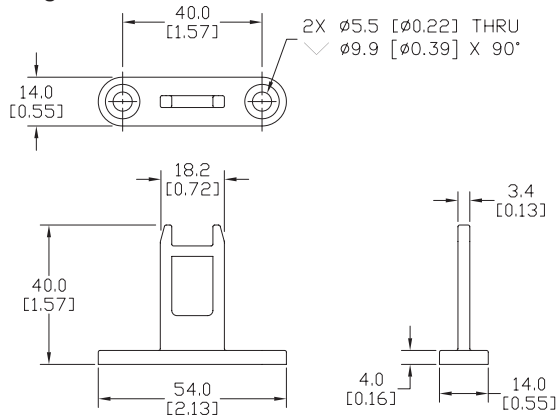


Figure 2

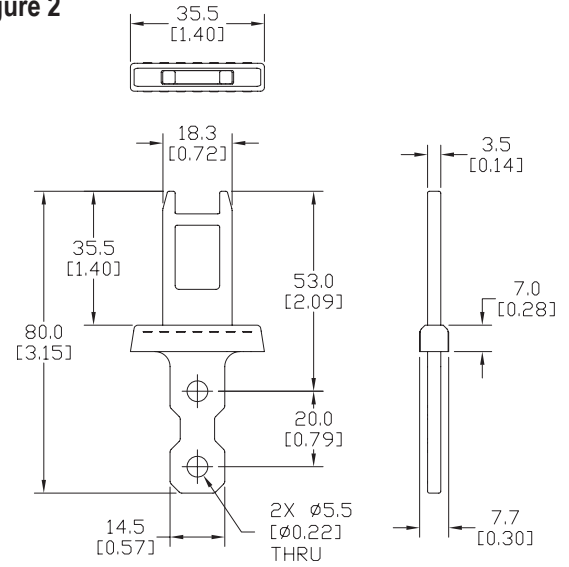
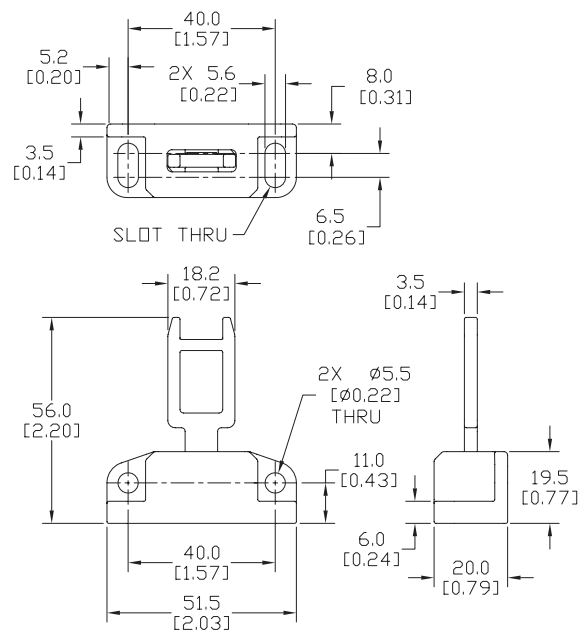


Figure 3



# IDEM Solenoid Interlock Safety Accessories

## Dimensions

mm [in]

Figure 4

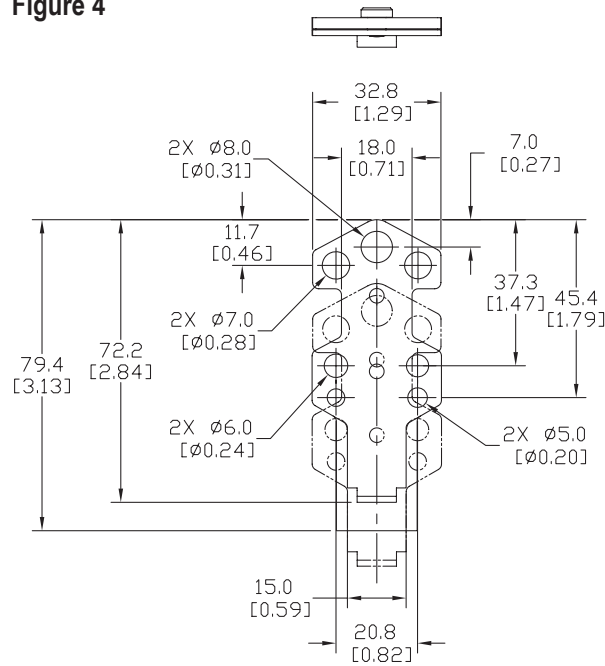


Figure 5

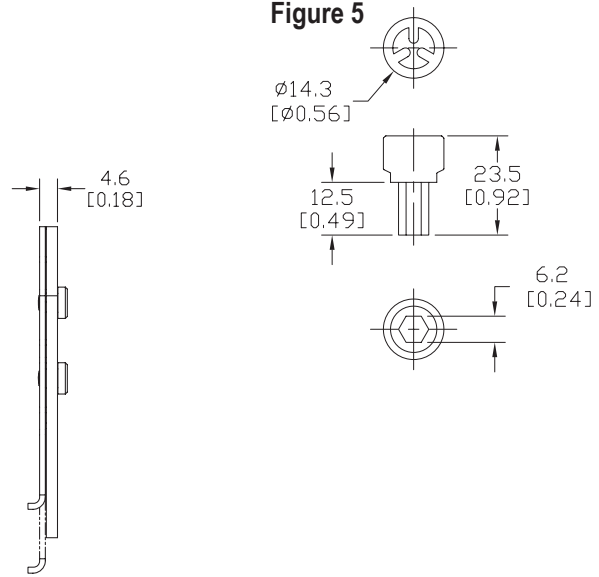
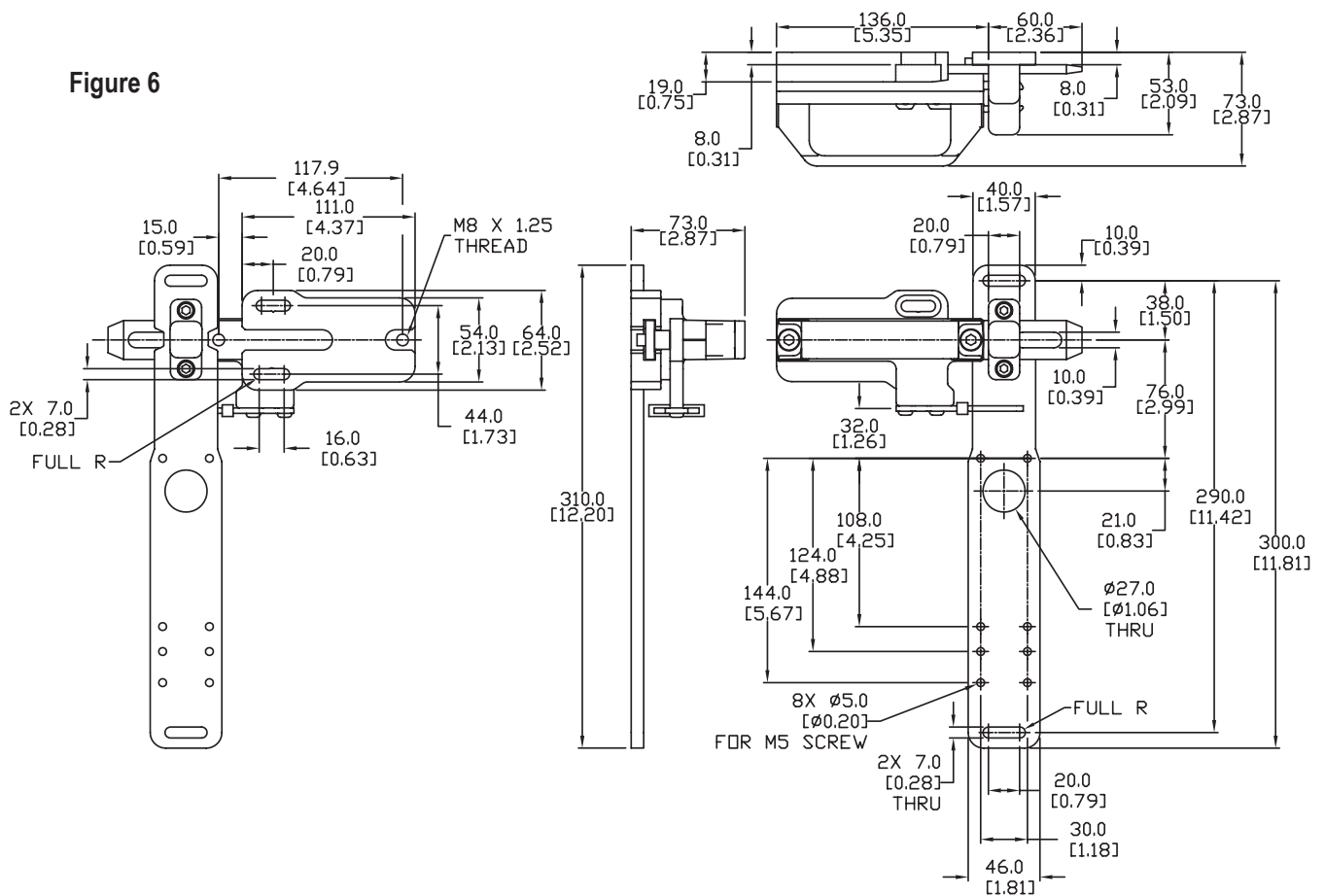


Figure 6



# IDEM Solenoid Interlock Safety Accessories

## Dimensions

mm [in]

Figure 7

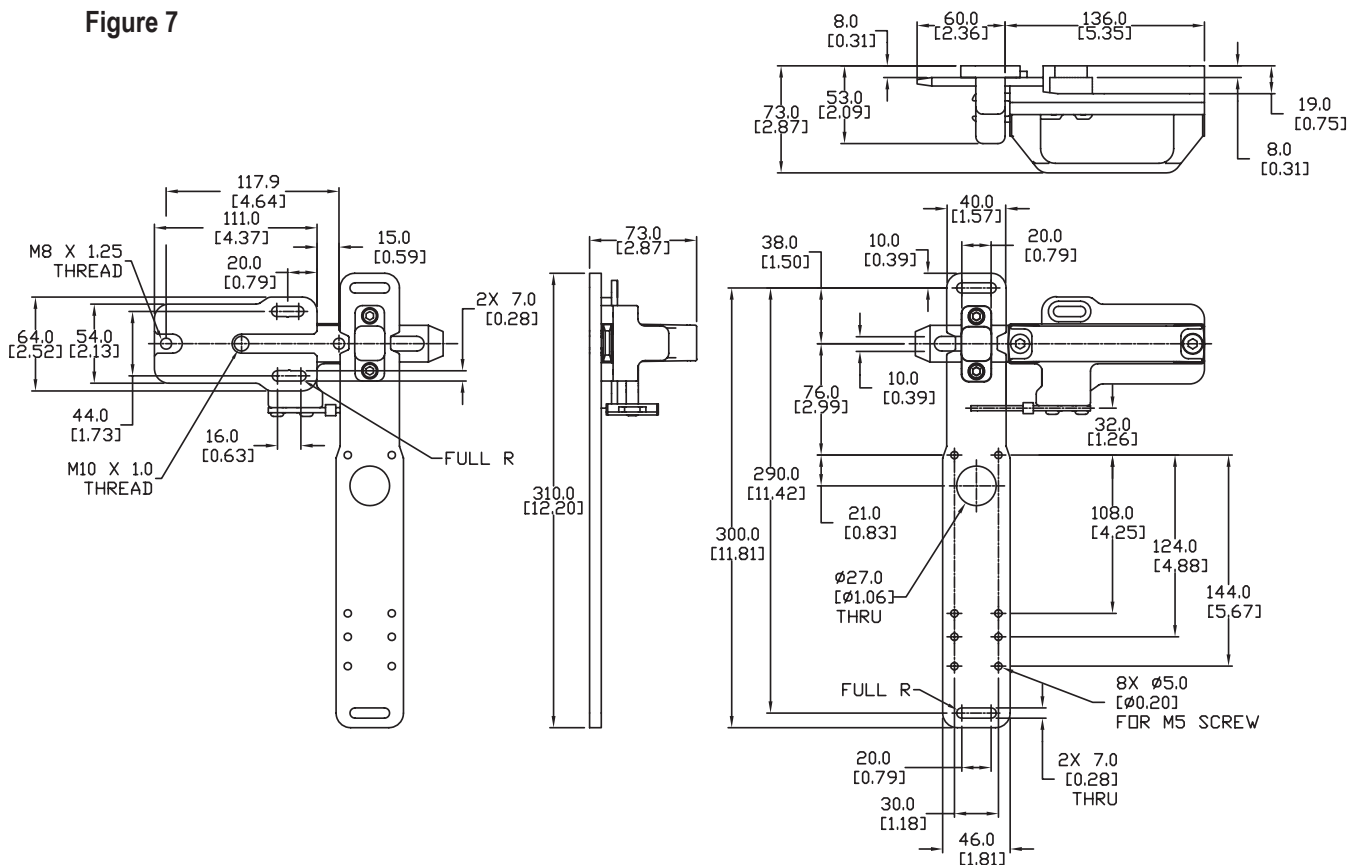


Figure 8

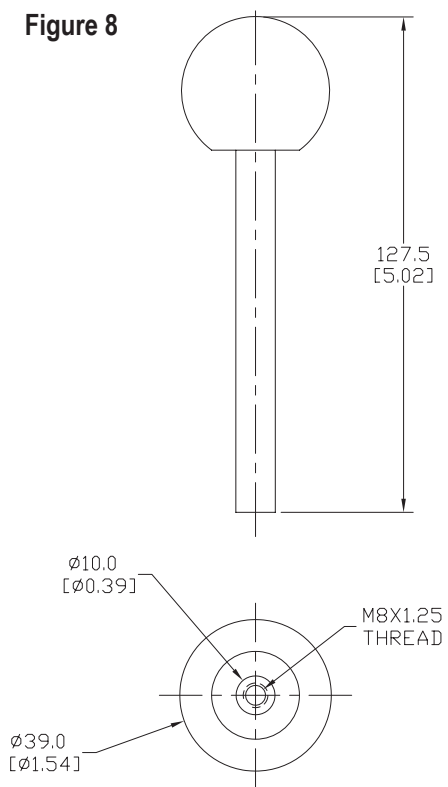
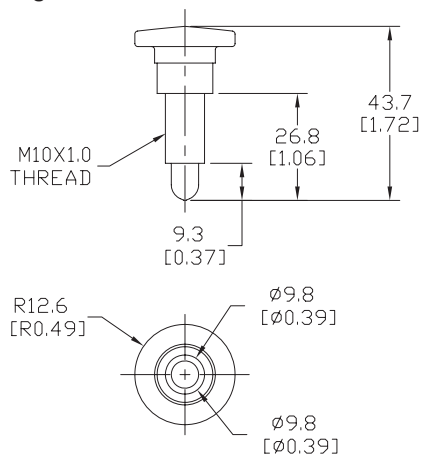


Figure 9



# IDEM Interlock Safety Accessories



## Actuator Keys For Use With IDIS-1

- All keys are 316 stainless steel
- Flexible key option available



**140103**



**140104**



**140105**

### IDEM Interlock Safety Switch Actuator Tongue (Keys)

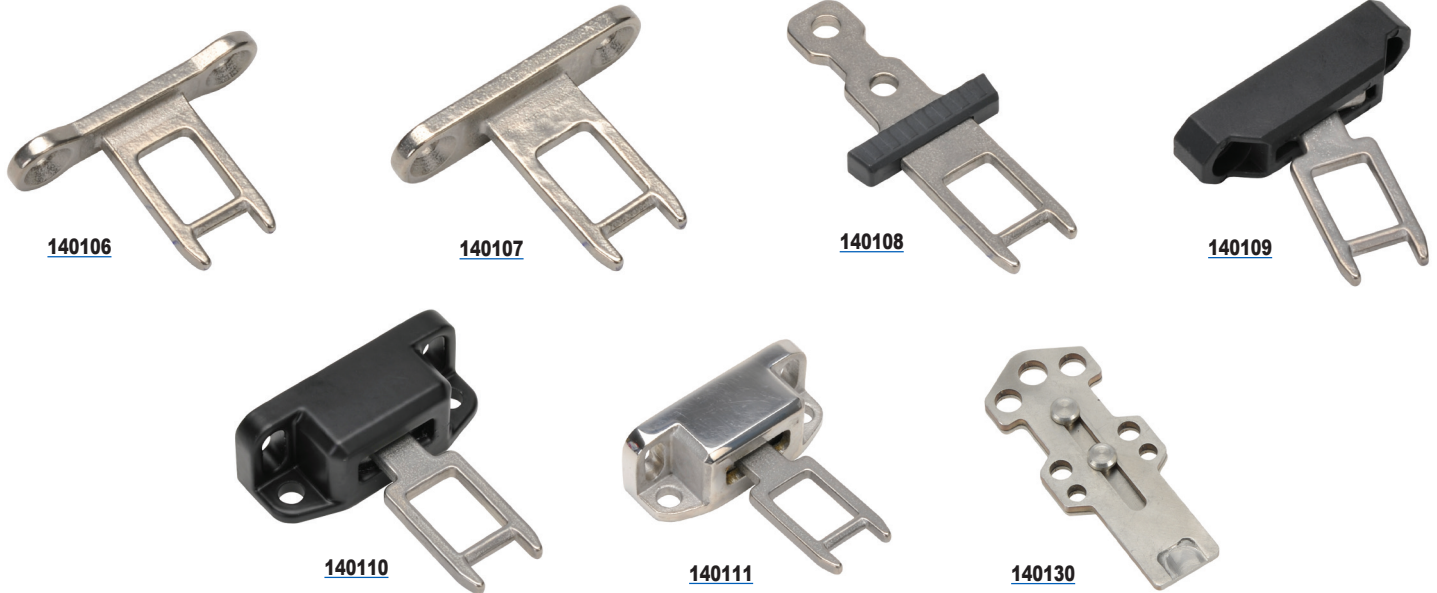
Part Number	Price	Description	Minimum Entry Radius	Weight (lb [g])	Drawings
<a href="#"><u>140103</u></a>	\$10.50	14.4 mm mounting hole spacing, 90° bent stainless steel key/mounting tab	175mm	0.03 [13.6]	<a href="#"><u>PDF</u></a>
<a href="#"><u>140104</u></a>	\$10.50	14.4 mm mounting hole spacing, straight stainless steel key/mounting tab	175mm	0.03 [13.6]	<a href="#"><u>PDF</u></a>
<a href="#"><u>140105</u></a>	\$19.50	40mm mounting hole spacing, stainless steel key with polyester flexible mounting tab	100mm	0.06 [27.2]	<a href="#"><u>PDF</u></a>

# IDEM Interlock Safety Accessories

## Actuator Keys For Use With KP/K15 and K-SS/KM/KM-SS



- All keys are 316 stainless steel
- Flexible key options available



IDEM Interlock Safety Switch Actuator Tongue (Keys)							
Part Number	Price	Description	Use With		Minimum Entry Radius (mm [in])	Weight (lb [g])	Drawings
			KP/K-15	K-SS/KM/ KM-SS			
<a href="#">140106</a>	\$10.50	40mm mounting hole spacing, 90° stainless steel key/mounting tab	✓*		175mm [6.89]	0.07 [31.8]	<a href="#">PDF</a>
<a href="#">140107</a>	\$11.00	40mm mounting hole spacing, 90° stainless steel key/mounting tab	✓**	✓	175mm [6.89]	0.07 [31.8]	<a href="#">PDF</a>
<a href="#">140108</a>	\$10.50	20mm mounting hole spacing, straight stainless steel key with plastic stop	✓	✓	175mm [6.89]	0.07 [31.8]	<a href="#">PDF</a>
<a href="#">140109</a>	\$19.50	40mm mounting hole spacing, stainless steel key with polyester flexible mounting tab	✓	✓	100mm [3.94]	0.10 [45.4]	<a href="#">PDF</a>
<a href="#">140110</a>	\$38.50	40mm mounting hole spacing, stainless steel key with black painted aluminum flexible mounting tab	✓	✓	100mm [3.94]	0.16 [72.6]	<a href="#">PDF</a>
<a href="#">140111</a>	\$78.00	40mm mounting hole spacing, stainless steel key with mirror polished stainless steel flexible mounting tab	✓	✓	100mm [3.94]	0.22 [99.8]	<a href="#">PDF</a>
<a href="#">140130</a>	\$54.00	IDEM lockout actuator, stainless steel, for use with IDEM tongue (key) switches	✓	✓	NA	0.10 [45.4]	<a href="#">PDF</a>

\* For KP and K-15 series with plastic heads

\*\* For KP and K-15 series with stainless steel heads

# IDEM Interlock Safety Accessories



## Actuator Keys For Use With INCH and MK1

- All keys are 316 stainless steel
- Flexible key option available



**140179 140179-SS**



**140180**



**140181**



**140182**

### IDEM Interlock Safety Switch Actuator Tongue (Keys)

Part Number	Price	Description	Use With		Minimum Entry Radius (mm [in])	Weight (lb [g])	Drawings
			INCH	MK1			
<a href="#"><u>140179</u></a>	\$22.50	IDEM key guide, 316 stainless steel. Mounting hardware included. For use with IDEM INCH series safety switches	✓		NA	0.10 [45.4]	<a href="#"><u>PDF</u></a>
<a href="#"><u>140179-SS</u></a>	\$22.50	IDEM key guide, 316 stainless steel. For use with IDEM MK1 series safety switches		✓	NA	0.10 [45.4]	<a href="#"><u>PDF</u></a>
<a href="#"><u>140180</u></a>	\$11.00	IDEM actuator tongue (key), 8mm mounting hole spacing, 316 stainless steel, 90 degree mounting tab. For use with IDEM MK1 and INCH series safety switches	✓	✓	150 [5.91]	0.10 [45.4]	<a href="#"><u>PDF</u></a>
<a href="#"><u>140181</u></a>	\$11.00	IDEM actuator tongue (key), 15mm mounting hole spacing, 316 stainless steel, straight mounting tab, shock absorbing. For use with IDEM MK1 and INCH series safety switches	✓	✓	150 [5.91]	0.10 [45.4]	<a href="#"><u>PDF</u></a>
<a href="#"><u>140182</u></a>	\$19.50	IDEM actuator tongue (key), 40mm mounting hole spacing, 316 stainless steel, flexible mounting tab. For use with IDEM MK1 and INCH series safety switches	✓	✓	100 [3.94]	0.10 [45.4]	<a href="#"><u>PDF</u></a>

# IDEM Interlock Safety Accessories



## Accessories

- Gate bolt kits provide a sliding latch and lockout for swinging or sliding doors
- Comes with handle and flat actuator
- Sliding action prevents accidental closure
- Requires four M5 x 45mm mounting hardware (not included)
- Gate bolt kit materials: ABS plastic handle; mild steel yellow plate; aluminum black base; mild steel plated bar (inserts into guide); stainless steel guide and key



**GBA-1-210003**



**GBA-1-210004**



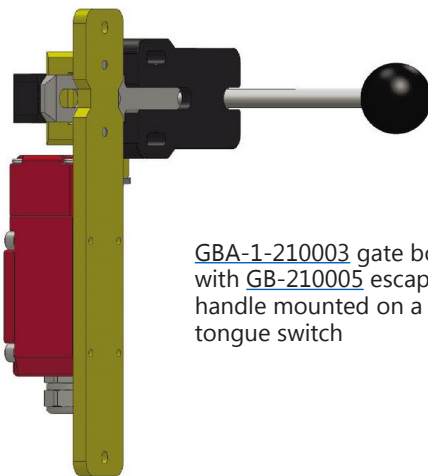
**GB-210005**



**GB-210006**

IDEM Interlock Safety Switch Accessories						
Part Number	Price	Description	Use with:		Weight (lb [g])	Drawings
			KM	GBA-1		
<a href="#">GBA-1-210003</a>	\$137.00	IDEM gate bolt, left hand version, for use with KM series safety switches. Includes actuating tongue (key).	✓		3.7 [1678]	<a href="#">PDF</a>
<a href="#">GBA-1-210004</a>	\$137.00	IDEM gate bolt, right hand version, for use with KM series safety switches. Includes actuating tongue (key).	✓		3.7 [1678]	<a href="#">PDF</a>
<a href="#">GB-210005</a>	\$19.50	IDEM rear escape handle, for use with GBA-1 and GBL-1 series gate bolts		✓	0.1 [45]	<a href="#">PDF</a>
<a href="#">GB-210006</a>	\$19.50	IDEM spring loaded catch, for use with GBA-1 and GBL-1 series gate bolts		✓	0.08 [36]	<a href="#">PDF</a>

## Assembly Example



[GBA-1-210003](#) gate bolt with [GB-210005](#) escape handle mounted on a KM tongue switch



# Safety Products



*Warning: Safety products sold by AutomationDirect are Safety components only. The purchaser/installer is solely responsible for the application of these components and ensuring all necessary steps have been taken to assure each application and use meets all performance and applicable safety requirements and/or local, national and/or international safety codes as required by the application. AutomationDirect cannot certify that our products, used solely or in conjunction with other AutomationDirect or other vendors' products, will assure safety for any application. Any person using or applying any products sold by AutomationDirect is responsible for learning the safety requirements for their individual application and applying them, and therefore assumes all risks, and accepts full and complete responsibility, for the selection and suitability of the product for their respective application.*

*AutomationDirect does not provide design or consulting services, and cannot advise whether any specific application or use of our products would ensure compliance with the safety requirements for any application.*