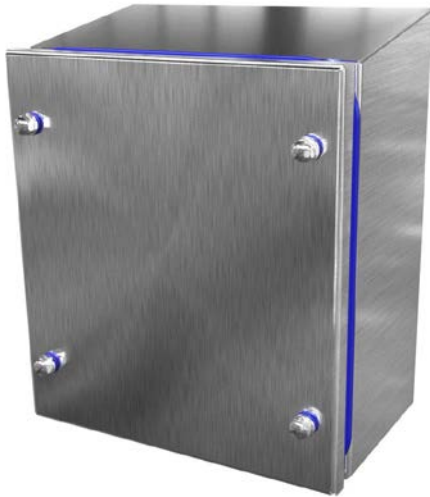


IP69K Stainless Steel Sanitary Wall-Mount with Screw Cover



Applications

Designed to withstand high pressure and high temperature wash down procedures with direct and indirect food contact applications within the food and beverage industry. Screw cover enclosures provide maximum back panel space.

Includes dual-gasket design that ensures performance in extreme applications. FDA-grade silicone gasket helps resist bacterial growth and chemical absorption.

Construction

- 16-gauge 304 stainless steel
- Seams continuously welded and ground smooth
- 10° slope top
- Sanitary fasteners with FDA-grade silicone gasket
- Poured-in-place oil- and water-resistant gasket
- FDA-grade silicone gasket
- Provision for mounting optional panels
- Ground stud on door and body
- Solid back with no mounting holes makes it easy to add weld mounting stand-off.
- Collar studs are provided for mounting optional subpanel.

Finish

- # 4 Brushed finish 25-35 RA is suitable for medical and food industry.

Listings

- NEMA Type 3R, 4, 4X, 12, and 13
- cULus Listed 3R, 4, 4X, and 12 [File E69392]
- IEC 60529 IP69K
- ANSI/NSF 169



Shipping Schedule

Same day	1 - 15 days
----------	-------------

Color indicates shipping lead time in business days.

IP69K Stainless Steel Sanitary Wall-Mount with Screw Cover

Part Number	Price	Size HxWxD	Drawing Link	Optional Subpanel	Price
SCE-7KJ0604SSST	\$711.00	8.05 x 6.00 x 5.10 [204 x 152 x 130]	PDF	SCE-6P4	\$4.25
SCE-9KJ0804SSST	\$787.00	10.05 x 8.00 x 5.10 [255 x 203 x 130]	PDF	SCE-8P6	\$5.75
SCE-11KJ1004SSST	\$863.00	12.05 x 10.00 x 5.10 [306 x 254 x 130]	PDF	SCE-10P8	\$8.00
SCE-13KJ1206SSST	\$1,033.00	14.57 x 12.00 x 7.10 [370 x 305 x 180]	PDF	SCE-12P10	\$10.75
SCE-15KJ1408SSST	\$1,208.00	17.10 x 14.00 x 9.10 [434 x 356 x 231]	PDF	SCE-14P12	\$14.00

Note: Dimensions in inches [millimeters].