

Disconnect Handle Applications for Carbon Steel Disconnect Enclosures

Designed to house the following available at AutomationDirect.com



- AutomationDirect.com NEMA 1/12 Flexible shaft handle for Molded Case Circuit Breakers (MCCBs). Series F_SO_C flex handle mechanisms are available in four sizes to actuate all AutomationDirect MCCBs from 15 amps up to 600 amps. **F0S03C, F0S06C, F1S03C, F1S06C, F3S03C, F3S06C, F4S04C, and F4S06C.**
- Socomec Disconnect switches with cable, flange-mounted cable operator and handles. Handles **37299002** and **37299003**, cable operator **37299903**, and cables **37299992** (3ft) or **37299993** (5ft).
- Fuji Electric NEMA 12 flexible shaft handle for Molded Case Circuit Breakers (MCCBs). Series BW9F flex handle mechanisms are available in four sizes to actuate all Fuji Electric MCCBs from 15 Amps to 800 Amps. **BW9F0CA-15A, BW9F0CA-20A, BW9F0GA-15A, BW9F0GA-20A, BW9F0HA-15A, BW9F0HA-20A, BW9F0JA-15A, and BW9F0JA-20A.** Gladiator Molded Case Circuit Breakers (MCCBs) flange mounted cable operator and handles. See Gladiator sections for handles and cable options. **GCBX1-FHC-N3R4-M, GCBX1-FHC-N4X-M, GCBX5-FHC-N3R4-M, and GCBX5-FHC-N4X-M**

Available at AutomationDirect.com				
Disconnect Enclosure Series	AutomationDirect F_SO_C Series	Socomec 37299002 and 37299003	Fuji BW9F Series	Gladiator GCBX
SCE-SA_LPPL Series	✓	✓	✓	✓
SCE-HS_LP Series	✓	✓	✓	✓
SCE-XVR_Series	✓	✓	✓	✓
SCE-X_D_Series	✓	✓	✓	✓
SCE-X_LP Series	✓	✓	✓	✓
SCE-XM_Series	✓	✓	✓	✓
SCE-XM_EQ_Series	✓	✓	✓	✓
SCE-XM_EW_Series	✓	✓	✓	✓
SCE-XD_Series	✓	✓	✓	✓
SCE-N_X_Series	✓	✓	✓	✓

Designed to house other brands

- Allen-Bradley** Bulletin 1494V and 140U disconnect switches with flange-mounted variable-depth operating mechanisms and Bulletin 1494V flange-mounted variable-depth operating mechanisms for circuit breakers. These enclosures will not accept Allen-Bradley Bulletin 1494F disconnect devices or Bulletin 1494D circuit breaker operators.
- ABB Controls** flange-mounted variable-depth operating mechanisms for disconnect switches and circuit breakers.
- Eaton / Cutler-Hammer** Type C361 flange-mounted variable depth.
- Eaton / Cutler-Hammer** Type C361 flange-mounted variable-depth operating mechanisms with disconnect switches and Type C371 flange-mounted variable depth operating mechanisms for circuit breakers; also Flex Shaft™ handle mechanisms for circuit breakers.
- General Electric** Type STDA flange handles and variable depth operating.
- General Electric** Type STDA flange handles and variable depth operating mechanisms for disconnect switches and circuit breakers; also Spectra Flex™ cable operators for circuit breakers.
- SIEMENS** I-T-E Max-Flex flange-mounted variable depth operating handle for disconnect switches and circuit breakers.
- Square D** Class 9422 disconnect switches with flange-mounted variable depth operating mechanisms or cable Industry Standards mechanisms and Class 9422 flange-mounted variable depth operating mechanisms or cable mechanisms for circuit breakers. These enclosures will not accept Square D Class 9422 bracket-mounted disconnect devices, Class 9422TG1, or TG2 devices.

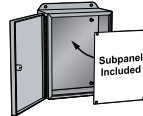
Disconnect Enclosures Series	Other Brands						
	Square D 9422 Series	Allen-Bradley 1494F and 1494D Series	Allen-Bradley 1494V and 140U Series	ABB Controls	Eaton/ Cutler-Hammer C361 and C371 Series	General Electric STDA Series	Siemens I-T-E Max-Flex Series
SCE-SA_LPPL Series	✓	✗	✓	✓	✓	✓	✓
SCE-HS_LP Series	✓	✗	✓	✓	✓	✓	✓
SCE-XVR_Series	✓	✗	✓	✓	✓	✓	✓
SCE-X_D_Series	✓	✗	✓	✓	✓	✓	✓
SCE-X_LP Series	✓	✗	✓	✓	✓	✓	✓
SCE-XM_Series	✓	✗	✓	✓	✓	✓	✓
SCE-XM_EQ_Series	✓	✗	✓	✓	✓	✓	✓
SCE-XM_EW_Series	✓	✗	✓	✓	✓	✓	✓
SCE-XD_Series	✓	✗	✓	✓	✓	✓	✓
SCE-N_X_Series	✓	✗	✓	✓	✓	✓	✓

Note: For more detail on compatible disconnects, see the "Other Documents" section of the enclosure's item page.

Heavy Duty Freestanding Enclosure with External Rotary Disconnect



Your Enclosure Source®



Applications

Designed to house the main power supply in external enclosure on the right side of main enclosure, keeping the live side of the power supply separate from the primary electrical equipment. Provision for Compact Fusible Disconnect with Rotary handle Disconnect 30 to 200 amp Allen-Bradley 194R, Square D GS2, Eaton/Bussmann R9, Siemens CFS models and Socomec Fuserbloc models. Provides protection from dirt, dust, oil and water and can house.

Finish

- ANSI 61 gray powder coated inside and out
- Optional subpanels are powder coated white.

Listings

- NEMA Type 3R, 12, and 13
- cULus Listed Type 3R and 12 [File E69392]
- IEC 60529 IP55



Construction

- 1/8 in [3mm]
- Seams continuously welded and ground smooth
- Flange trough collar around all sides of door opening
- Body stiffeners are provided in large enclosures for extra rigidity.
- Heavy duty lifting eyes anchor into the reinforced top.
- Removable center posts permit easy subpanel installation.
- Concealed hinges
- Black zinc diecast padlocking handles
- 3-point latching mechanism
- Large, removable print pockets
- Poured-in-place oil- and water-resistant gasket
- Removable panels mount on collar studs.
- Defeater on master door requires a screwdriver to open.
- Mechanical interlock activated by the External Disconnect prevents main door of the enclosure from closing unless the EXD enclosure is first closed.
- Mechanical interlock activated by master door prevents slave doors from being opened first.
- The doors can be closed in any order.
- Hole plugs are provided to seal holes in bottom of enclosure.
- Ground stud on door and body
- Provisions for light kit
- Provision Compact Fusible Disconnect with Rotary handle Disconnect 30 to 200 amp Allen-Bradley 194R, Square D GS2, Eaton/Bussmann R9, Siemens CFS models and Socomec Fuserbloc models

Heavy Duty Freestanding Enclosure with External Rotary Disconnect



Shipping Schedule

Same day	1 - 15 days
----------	-------------

Color indicates shipping lead time in business days.

Single-Door with Powder Coated Subpanel

Part Number	Price	Size HxWxD	Drawing Link	Included Subpanel
<u>SCE-72XR2818</u>	\$3,558.00	72.00 x 27.50 x 19.05 [1829 x 699 x 484]	<u>PDF</u>	<u>SCE-64P25</u>
<u>SCE-72XR3418</u>	\$3,781.00	72.00 x 33.50 x 19.05 [1829 x 851 x 484]	<u>PDF</u>	<u>SCE-64P31</u>
<u>SCE-72XR4018</u>	\$4,005.00	72.00 x 39.50 x 19.05 [1829 x 1003 x 484]	<u>PDF</u>	<u>SCE-64P37</u>
<u>SCE-84XR4018</u>	\$4,285.00	84.00 x 39.50 x 19.05 [2134 x 1003 x 484]	<u>PDF</u>	<u>SCE-76P37</u>
<u>SCE-90XR4018</u>	\$4,676.00	90.00 x 39.50 x 19.05 [2286 x 1003 x 484]	<u>PDF</u>	<u>SCE-82P37</u>

Note: Dimensions in inches [millimeters].

Single-Door with Galvanized Subpanel

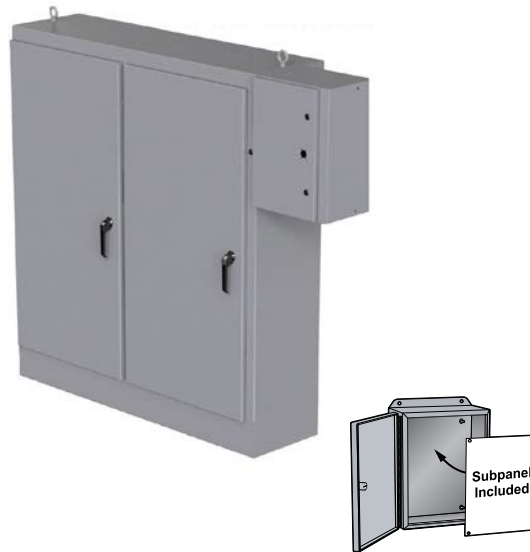
Part Number	Price	Size HxWxD	Drawing Link	Included Subpanel
<u>SCE-72XR2818G</u>	\$3,592.00	72.00 x 27.50 x 19.05 [1829 x 699 x 484]	<u>PDF</u>	<u>SCE-64P25GALV</u>
<u>SCE-72XR3418G</u>	\$3,855.00	72.00 x 33.50 x 19.05 [1829 x 851 x 484]	<u>PDF</u>	<u>SCE-64P31GALV</u>
<u>SCE-72XR4018G</u>	\$4,044.00	72.00 x 39.50 x 19.05 [1829 x 1003 x 484]	<u>PDF</u>	<u>SCE-64P37GALV</u>
<u>SCE-84XR4018G</u>	\$4,340.00	84.00 x 39.50 x 19.05 [2134 x 1003 x 484]	<u>PDF</u>	<u>SCE-76P37GALV</u>
<u>SCE-90XR4018G</u>	\$4,737.00	90.00 x 39.50 x 19.05 [2286 x 1003 x 484]	<u>PDF</u>	<u>SCE-82P37GALV</u>

Note: Dimensions in inches [millimeters].

Heavy Duty Two-Door Freestanding Enclosure with External Rotary Disconnect



Your Enclosure Source®



Shipping Schedule

Same day 1 - 15 days

Color indicates shipping lead time in business days.

Two-Door with Powder Coated Subpanel

Part Number	Price	Size HxWxD	Drawing Link	Included Subpanel
<u>SCE-72XR5418</u>	\$5,117.00	72.00 x 53.75 x 19.05 [1829 x 1365 x 484]	<u>PDF</u>	<u>SCE-64P52</u>
<u>SCE-72XR6618</u>	\$5,577.00	72.00 x 65.75 x 19.05 [1829 x 1670 x 484]	<u>PDF</u>	<u>SCE-64P64</u>
<u>SCE-72XR7818</u>	\$6,283.00	72.00 x 77.75 x 19.05 [1829 x 1975 x 484]	<u>PDF</u>	<u>SCE-64P76</u>
<u>SCE-84XR7818</u>	\$6,782.00	84.00 x 77.75 x 19.05 [2134 x 1975 x 484]	<u>PDF</u>	<u>SCE-76P76</u>
<u>SCE-90XR7818</u>	\$7,316.00	90.00 x 77.75 x 19.05 [2286 x 1975 x 484]	<u>PDF</u>	<u>SCE-82P76</u>

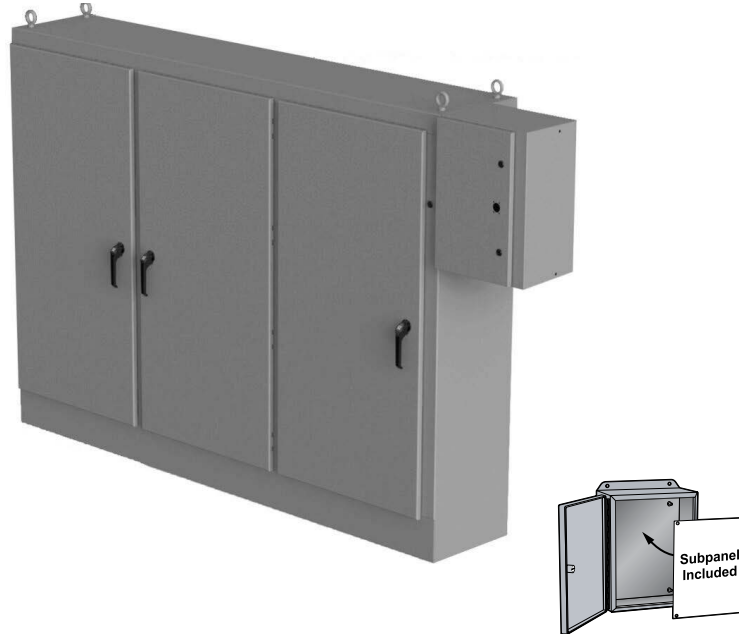
Note: Dimensions in inches [millimeters].

Two-Door with Galvanized Subpanel

Part Number	Price	Size HxWxD	Drawing Link	Included Subpanel
<u>SCE-72XR5418G</u>	\$5,175.00	72.00 x 53.75 x 19.05 [1829 x 1365 x 484]	<u>PDF</u>	<u>SCE-64P52GALV</u>
<u>SCE-72XR6618G</u>	\$5,740.00	72.00 x 65.75 x 19.05 [1829 x 1670 x 484]	<u>PDF</u>	<u>SCE-64P64GALV</u>
<u>SCE-72XR7818G</u>	\$6,436.00	72.00 x 77.75 x 19.05 [1829 x 1975 x 484]	<u>PDF</u>	<u>SCE-64P76GALV</u>

Note: Dimensions in inches [millimeters].

Heavy Duty Three-Door Freestanding Enclosure with External Rotary Disconnect



Shipping Schedule

Same day	1 - 15 days
----------	-------------

Color indicates shipping lead time in business days.

Three-Door with Powder Coated Subpanel

Part Number	Price	Size HxWxD	Drawing Link	Included Subpanel 1	Included Subpanel 2
<u>SCE-72XR3EQ18</u>	\$7,585.00	72.00 x 99.50 x 19.05 [1829 x 2527 x 484]	<u>PDF</u>	<u>SCE-64P64*</u>	<u>SCE-64P31</u>
<u>SCE-72XR3EW18</u>	\$8,307.00	72.00 x 117.50 x 19.05 [1829 x 2985 x 484]	<u>PDF</u>	<u>SCE-64P76*</u>	<u>SCE-64P31</u>
<u>SCE-84XR3EW18</u>	\$9,052.00	84.00 x 117.50 x 19.05 [2134 x 2985 x 484]	<u>PDF</u>	<u>SCE-76P76*</u>	<u>SCE-76P37</u>

Note: Dimensions in inches [millimeters].

* Two of this subpanel part included.

Three-Door with Galvanized Subpanel

Part Number	Price	Size HxWxD	Drawing Link	Included Subpanel 1	Included Subpanel 2
<u>SCE-72XR3EQ18G</u>	\$7,762.00	72.00 x 99.50 x 19.05 [1829 x 2527 x 484]	<u>PDF</u>	<u>SCE-64P31GALV*</u>	<u>SCE-64P64GALV</u>
<u>SCE-72XR3EW18G</u>	\$8,513.00	72.00 x 117.50 x 19.05 [1829 x 2985 x 484]	<u>PDF</u>	<u>SCE-76P37GALV*</u>	<u>SCE-76P76GALV</u>
<u>SCE-84XR3EW18G</u>	\$9,301.00	84.00 x 117.50 x 19.05 [2134 x 2985 x 484]	<u>PDF</u>	<u>SCE-64P37GALV*</u>	<u>SCE-64P76GALV</u>

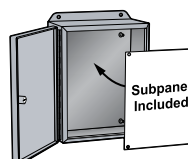
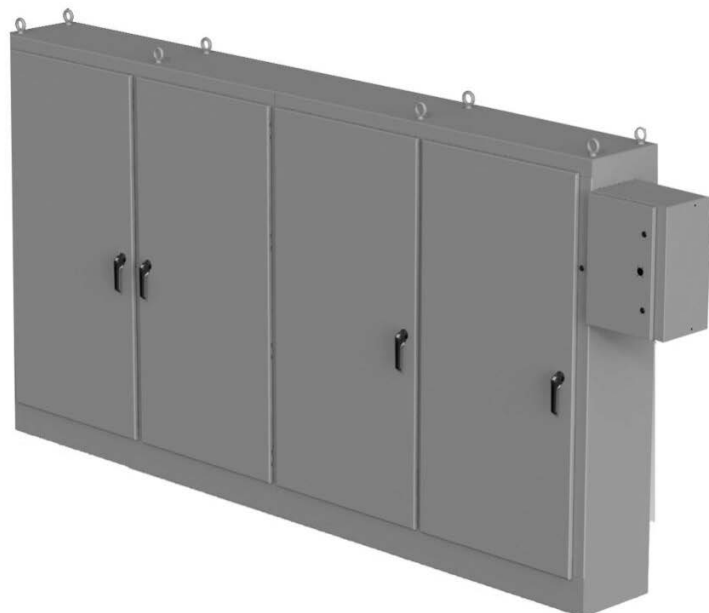
Note: Dimensions in inches [millimeters].

* Two of this subpanel part included.

Heavy Duty Four-Door Freestanding Enclosure with External Rotary Disconnect



Your Enclosure Source®



Shipping Schedule

Same day 1 - 15 days

Color indicates shipping lead time in business days.

Four-Door with Powder Coated Subpanel

Part Number	Price	Size HxWxD	Drawing Link	Included Subpanels
<u>SCE-84XR4EW18</u>	Retired	84.00 x 157.50 x 19.05 [2134 x 4001 x 484]	<u>PDF</u>	<u>SCE-76P76*</u>
<u>SCE-90XR4EW18</u>	Retired	90.00 x 157.50 x 19.05 [2286 x 4001 x 484]	<u>PDF</u>	<u>SCE-82P76*</u>

Note: Dimensions in inches [millimeters].

* Two of this subpanel part included.

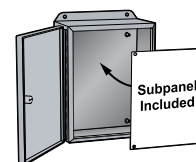
Four-Door with Galvanized Subpanel

Part Number	Price	Size HxWxD	Drawing Link	Included Subpanels
<u>SCE-84XR4EW18G</u>	Retired	84.00 x 157.50 x 19.05 [2134 x 4001 x 484]	<u>PDF</u>	<u>SCE-76P76GALV*</u>
<u>SCE-90XR4EW18G</u>	Retired	90.00 x 157.50 x 19.05 [2286 x 4001 x 484]	<u>PDF</u>	<u>SCE-82P76GALV*</u>

Note: Dimensions in inches [millimeters].

* Two of this subpanel part included.

Heavy Duty Five-Door Freestanding Enclosure with External Rotary Disconnect



Shipping Schedule

Same day	1 - 15 days
----------	-------------

Color indicates shipping lead time in business days.

Five-Door with Powder Coated Subpanel

Part Number	Price	Size HxWxD	Drawing Link	Included Subpanel
SCE-84XR5EW18	Retired	84.00 x 196.75 x 19.05 [2134 x 4997 x 484]	PDF	SCE-76P76
SCE-90XR5EW18	Retired	90.00 x 196.75 x 19.05 [2286 x 4997 x 484]	PDF	SCE-82P76

Note: Dimensions in inches [millimeters].

Five-Door with Galvanized Subpanel

Part Number	Price	Size HxWxD	Drawing Link	Included Subpanel 1	Included Subpanel 2
SCE-84XR5EW18G	Retired	84.00 x 196.75 x 19.05 [2134 x 4997 x 484]	PDF	SCE-82P76GALV*	SCE-82P37GALV
SCE-90XR5EW18G	Retired	90.00 x 196.75 x 19.05 [2286 x 4997 x 484]	PDF	SCE-76P76GALV*	SCE-76P37GALV

Note: Dimensions in inches [millimeters].

* Two of this subpanel part included.

Heavy Duty Six-Door Freestanding Enclosure with External Rotary Disconnect



Shipping Schedule

Same day	1 - 15 days
----------	-------------

Color indicates shipping lead time in business days.

Six-Door with Powder Coated Subpanel

Part Number	Price	Size HxWxD	Drawing Link	Included Subpanels
<u>SCE-84XR6EW18</u>	Retired	84.00 x 235.00 x 19.05 [2134 x 5969 x 484]	<u>PDF</u>	<u>SCE-76P76**</u>
<u>SCE-90XR6EW18</u>	Retired	90.00 x 252.00 x 19.05 [2286 x 6401 x 484]	<u>PDF</u>	<u>SCE-82P76**</u>

Note: Dimensions in inches [millimeters].

** Three of this subpanel part included.

Six-Door with Galvannized Subpanel

Part Number	Price	Size HxWxD	Drawing Link	Included Subpanels
<u>SCE-84XR6EW18G</u>	Retired	84.00 x 252.00 x 19.05 [2134 x 6401 x 484]	<u>PDF</u>	<u>SCE-76P76GALV**</u>
<u>SCE-90XR6EW18G</u>	Retired	90.00 x 252.00 x 19.05 [2286 x 6401 x 484]	<u>PDF</u>	<u>SCE-82P76GALV**</u>

Note: Dimensions in inches [millimeters].

** Three of this subpanel part included.

Heavy Duty Freestanding Enclosure with External Rotary Disconnect



Dimensions

