

# Enclosure Accessories

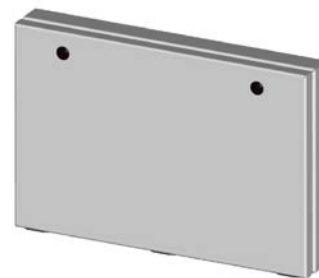
## Media Storage Pockets



Designed to keep prints clean and easy to access. Exterior print pockets have a hinged cover with cable stops to hold the door at 90 degrees open position and black 1/4-turn latches. Made of steel and powder coated RAL 7035 gray. UL Recognized sealing washer maintains environmental rating of the enclosed to attach flanges to the enclosure

Exterior Print Pocket			
Part Number	Price	Size HxWxD	Drawing Link
<a href="#">SCE-13ELJEXPP</a>	\$220.00	13.00 x 19.00 x 2.50 [330 x 483 x 64]	<a href="#">PDF</a>
<a href="#">SCE-19ELJEXPP</a>	\$220.00	19.00 x 13.00 x 2.50 [483 x 330 x 64]	<a href="#">PDF</a>

Note: Dimensions in inches [millimeters].



[SCE-13ELJEXPP](#)

Interior Print Pocket				
Part Number	Price	Size HxWxD	Description	Drawing Link
<a href="#">SCE-PP7701</a>	\$32.50	8.00 x 6.50 x 1.00 [203 x 165 x 25]	Small standard print pocket white polypropylene	<a href="#">PDF</a>
<a href="#">SCE-PP101201</a>	\$36.00	10.00 x 11.50 x 1.00 [254 x 292 x 25]	Large standard print pocket white polypropylene material	<a href="#">PDF</a>
<a href="#">SCE-PP101203</a>	\$39.50	10.00 x 11.50 x 3.00 [254 x 292 x 76]	Extra deep print pocket heavy gauge steel powder coated white	<a href="#">PDF</a>
<a href="#">SCE-PP1212</a>	\$55.00	12.00 x 11.70 x 1.60 [305 x 297 x 41]	Print pocket for 11 x 14 binder cover heavy gauge steel powder coated white	<a href="#">PDF</a>

Note: Dimensions in inches [millimeters].



[SCE-PP7701](#)