

Enclosure Accessories

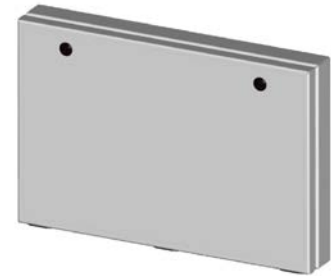
Media Storage Pockets



Designed to keep prints clean and easy to access. Exterior print pockets have a hinged cover with cable stops to hold the door at 90 degrees open position and black 1/4-turn latches. Made of steel and powder coated RAL 7035 gray. UL Recognized sealing washer maintains environmental rating of the enclosed to attach flanges to the enclosure

Exterior Print Pocket			
Part Number	Price	Size HxWxD	Drawing Link
SCE-13ELJEXPP	\$202.00	13.00 x 19.00 x 2.50 [330 x 483 x 64]	PDF
SCE-19ELJEXPP	\$202.00	19.00 x 13.00 x 2.50 [483 x 330 x 64]	PDF

Note: Dimensions in inches [millimeters].



[SCE-13ELJEXPP](#)

Interior Print Pocket				
Part Number	Price	Size HxWxD	Description	Drawing Link
SCE-PP7701	\$29.50	8.00 x 6.50 x 1.00 [203 x 165 x 25]	Small standard print pocket white polypropylene	PDF
SCE-PP101201	\$33.00	10.00 x 11.50 x 1.00 [254 x 292 x 25]	Large standard print pocket white polypropylene material	PDF
SCE-PP101203	\$36.50	10.00 x 11.50 x 3.00 [254 x 292 x 76]	Extra deep print pocket heavy gauge steel powder coated white	PDF
SCE-PP1212	\$50.00	12.00 x 11.70 x 1.60 [305 x 297 x 41]	Print pocket for 11 x 14 binder cover heavy gauge steel powder coated white	PDF

Note: Dimensions in inches [millimeters].



[SCE-PP7701](#)