



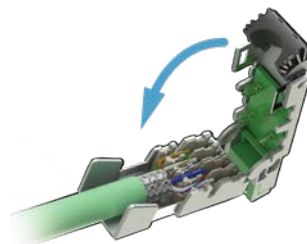
stay connected

Field Wireable Connectors - Data

Shielded RJ45 IDC Field Wireable Connectors

Features

- Insulation displacement connector (IDC)
- Cat5, Cat5e, and Cat6 models available
- Available in axial, 45°, and 90° outlets



7000-74001-0000000



7000-74031-0000000



7000-74075-0000000



7000-74085-0000000

Shielded RJ45 IDC Field Wireable Connectors

Part Number	Price	Wire Size	Number of Wires	Connector Type	Connection	Housing Material	Drawing Link
7000-74001-0000000	\$20.00	26 to 22 AWG	4	RJ45 axial male	Cat5	Polyvinyl chloride (PVC)	PDF
7000-74011-0000000	\$23.00		8		Cat6		PDF
7000-74021-0000000	\$22.00		4	RJ45 male 45-degree	Cat5	Polyethylene (PE)	PDF
7000-74031-0000000	\$25.00		8		Cat6		PDF
7000-74075-0000000	\$24.50	26 to 24 AWG	8	RJ45 axial male	Cat5e	Die-cast zinc	PDF
7000-74085-0000000	\$26.50			RJ45 90-degree male	Cat5e		PDF

Shielded RJ45 IDC Field Wireable Connectors Specifications

Model	74001, 74021	74011, 74031	74075, 74085
Type	RJ45: 4-Wire, 4-Pin	RJ45: 8-Wire, 8-Pin	RJ45: 8-Wire, 8-Pin
Maximum Voltage	60VDC		50V
Maximum Current per Contact	1.76 A		1.75 A
Transmission Type	Cat5	Cat6	Cat5e
Transfer Rate	10/100 Mbps	10 Gbit/s	1 Gbit/s
Bandwidth	100 MHz	250 MHz	100 MHz
Temperature Range	-40 to 70°C [-40 to 158°F]		
Protection Degree	IP20		
Wire Ø	max 1.6 mm		
Outside Cable Ø	5 to 9mm (74001, 74011), 5 to 8mm (74021, 74031)		5 to 9 mm
Conductor Cross Section	0.14 to 0.34 mm² [26 to 22 AWG]		0.14 to 0.25 mm² [26 to 24 AWG]
Housing Material	Polyvinyl chloride(PVC) / Polyethylene (PE)		Zinc die casting
Contact Material	—		Gold-plated
Approvals*	cURus		cULus

*To obtain the most current agency approval information, see the Agency Compliance & Certifications Checklist section on the specific part number's web page.

Pin Assignments

74001,74021
Industrial



74075,74085
Ethernet, AWG 24 - 26



74011,74031

568-B



568-A



Industrial



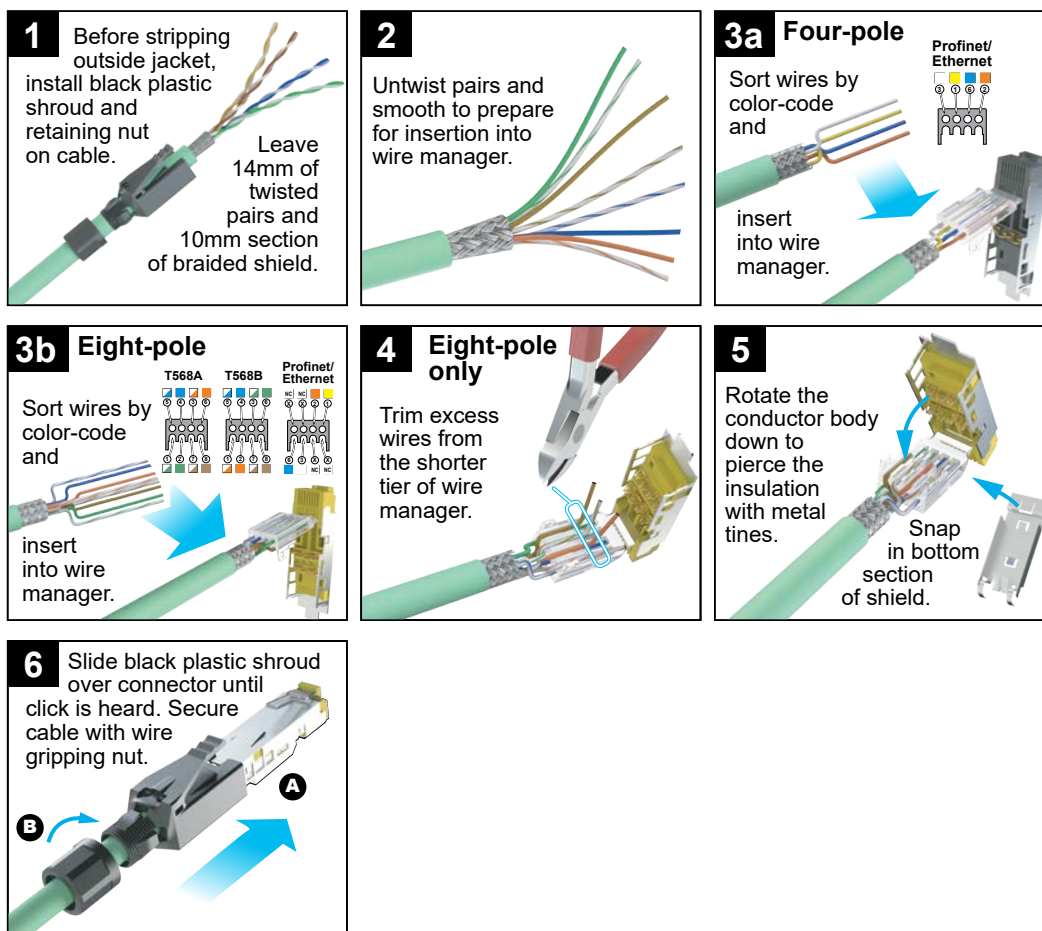


stay connected

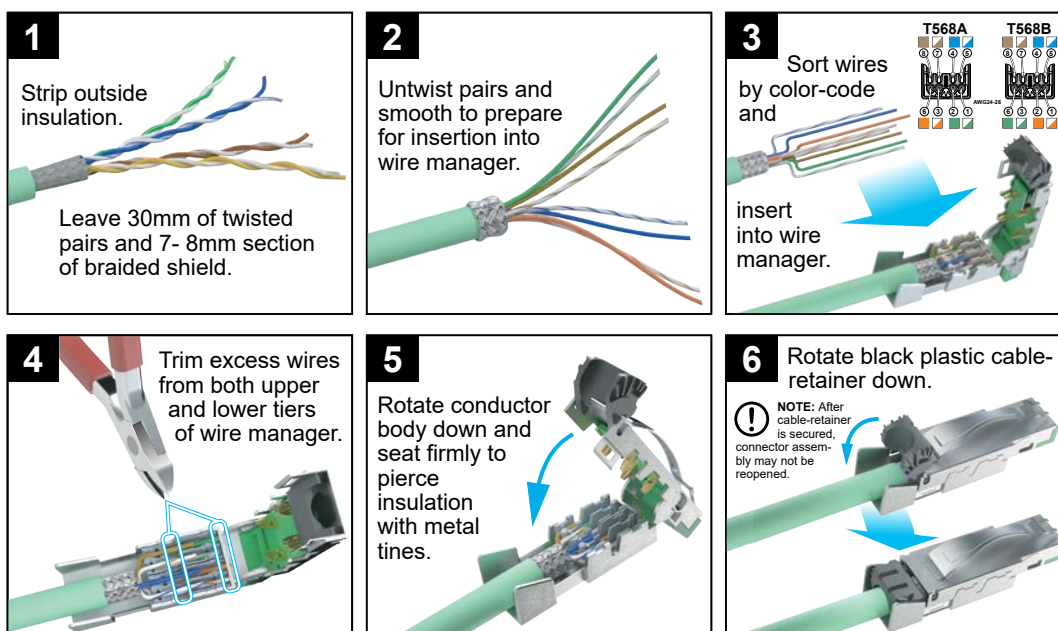
Field Wireable Connectors - Data

Assembly Instructions

Part Numbers: **7000-74001-0000000**, **7000-74011-0000000**, **7000-74021-0000000**, **7000-74031-0000000**



Part Numbers: **7000-74075-0000000**, **7000-74085-0000000**





stay connected

Field Wireable Connectors - Data

Shielded RJ45 M12 D-coded Bulkhead Connectors

Features

- Axial or 90-degree models
- Mounting nuts included
- Plastic housing



7000-44671-0000000



7000-44681-0000000

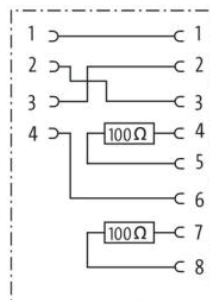
Shielded RJ45 M12 D-coded Bulkhead Connectors							
Part Number	Price	Wire Size	Number of Wires	Connector Type	Connection	Housing Material	Drawing Link
7000-44671-0000000	\$29.50	N/A	4	M12 D-coded axial female to RJ45 axial male	Cat5	Polyurethane (PUR)	PDF
7000-44681-0000000	\$30.00			M12 D-coded axial female to RJ45 90-degree female			PDF

Shielded RJ45 M12 D-coded Bulkhead Connectors Specifications	
Model	44671, 44681
Type	M12: 4-Wire, 4-Pole
Maximum Voltage	60VDC
Maximum Current per Contact	1.76 A
Transmission Type	Cat5
Bandwidth	100 MHz
Temperature Range	-25 to 85°C [-13 to 185°F]
Protection Degree	IP68 (M12); IP20 (RJ45)
Housing Mounting Panel Thickness	2.0 to 5.0 mm [0.08 to 0.20 in]
Housing Mounting Tightening Torque	0.6 N•m [5.3 in-lb]
Housing Material	Polyurethane (PUR)
Approvals*	cULus

*To obtain the most current agency approval information, see the Agency Compliance & Certifications Checklist section on the specific part number's web page.

Pin Assignments

M12 RJ45



Female



Female

