

Roxburgh RES70 Series EMI Filters

Single-phase General Purpose EMI Filters - High Performance

The Roxburgh RES70 Series filters are specifically designed as line filters for 120/240V AC devices. RES70 Series filters provide high performance for both common mode and

differential mode interference and are rated up to 250V. The filters are chassis mount and should be installed inside a cabinet or enclosure.

Features

- 0-240VAC/DC, 0-400 Hz, single-phase
- 1A - 36A models
- Metal case, miniature type
- 1/4" quick disconnect or screw terminals
- Panel mount

Filter performance curves are available on item page at www.AutomationDirect.com

Applications

- Ideally suited for products that must conform to part 15, FCC regulations
- Digital electronics
- Personal computers and peripherals
- Measuring instruments
- For monitors and display units

Standards and Certifications



RES EMI Filters		
Part Number	Price	Description
<u>RES70F01</u>	\$40.00	EMI Input filter, 120/240 VAC, 1-phase, two-stage, 1A
<u>RES70F03</u>	\$40.00	EMI Input filter, 120/240 VAC, 1-phase, two-stage, 3A
<u>RES70F06</u>	\$87.00	EMI Input filter, 120/240 VAC, 1-phase, two-stage, 6A
<u>RES70F10</u>	\$107.00	EMI Input filter, 120/240 VAC, 1-phase, two-stage, 10A
<u>RES70F12</u>	\$108.00	EMI Input filter, 120/240 VAC, 1-phase, two-stage, 12A
<u>RES70F16</u>	\$114.00	EMI Input filter, 120/240 VAC, 1-phase, two-stage, 16A
<u>RES70S25</u>	\$158.00	EMI Input filter, 120/240 VAC, 1-phase, two-stage, 25A
<u>RES70S36</u>	\$160.00	EMI Input filter, 120/240 VAC, 1-phase, two-stage, 36A

General Specifications	
Voltage Rating	0-240VAC/DC, 0-400 Hz
Voltage Max.	250V
Voltage Withstand	3000VDC/2 sec
Phase	1
UL/IEC Pollution Class	Degree II
Humidity	93% RH (non-condensing)
Overload Current	135% 2Hrs, 150% 60s
Insulation Resistance	500VDC >3.5 MΩ
Climate Class (IEC 60068-1)	25/100/21
Temperature Rise	60°C
Temperature Rating	-13 to 212°F (-25 to 100°C)
Flammability (UL94)	V-2
Case Material	Nickel Plated Steel
Altitude*	1000m (3000m with derating)
Mounting Clearance	>50mm Gap
Agency Approval**	cURus: File# E191581 (Standard: UL1283 & C22.2 No.8)

* Derate 1% per 100m after 1000m; Max 3000m.

**To obtain the most current agency approval information, see the Agency Approval Checklist section on the specific component part number web page.

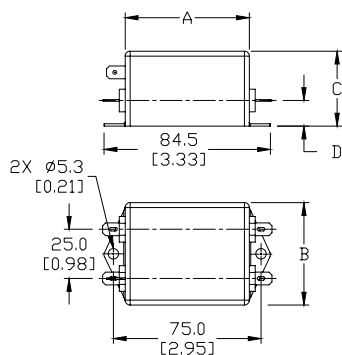
Roxburgh RES70 Series EMI Filters

Specifications								
Parameter	RES70F01	RES70F03	RES70F06	RES70F10	RES70F12	RES70F16	RES70S25	RES70S36
Max. Power (kW)	0.25	0.75	1.5	2.5	3	4	6.25	9
Current Rating (A)	1	3	6	10	12	16	25	36
SCCR Rating (kA)	5							
Ingress Protection	IP20							
Terminal Style	1/4" Quick Disconnect						M4 Stud	
Torque, lbs in (N·m)	N/A						11.5 (1.3)	
Operational Leakage Current (mA)	0.734			0.002	0.734			0.867
Total Resistance, Line to Load (mΩ)	800	325	200	50		100		
Residual Voltage (V@5s)	1V@5s							
Heat Dissipation (W)	0.8	2.925	7.2	5	7.2	25.6	62.5	129.6
Weight, lbs (kg)	0.042 (0.19)	0.55 (0.25)	1.0 (0.45)	1.43 (0.65)	1.47(0.67)	1.32 (0.6)	1.74 (0.79)	

Dimensions

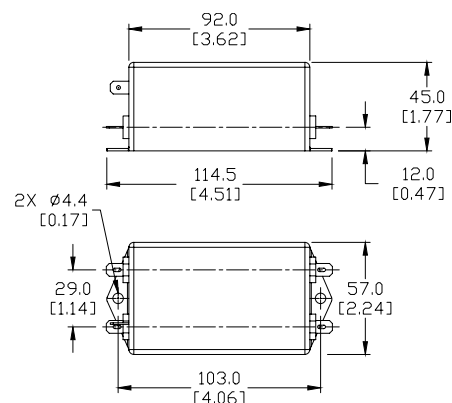
mm [inches]

RES70F01 RES70F03

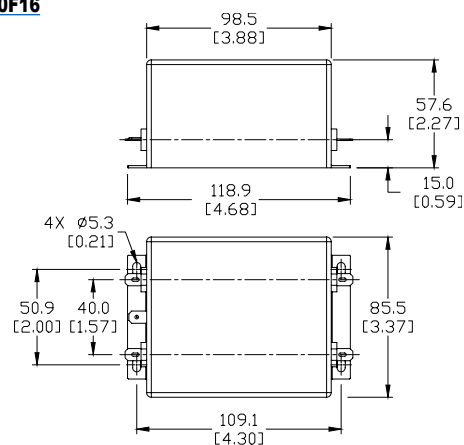


PART NUMBER	A	B	C	D
RES70F01	64.0 [2.52]	52.0 [2.05]	30.0 [1.18]	10.0 [0.39]
RES70F03	63.0 [2.48]	51.0 [2.01]	38.0 [1.50]	12.0 [0.47]

RES70F06



RES70F16

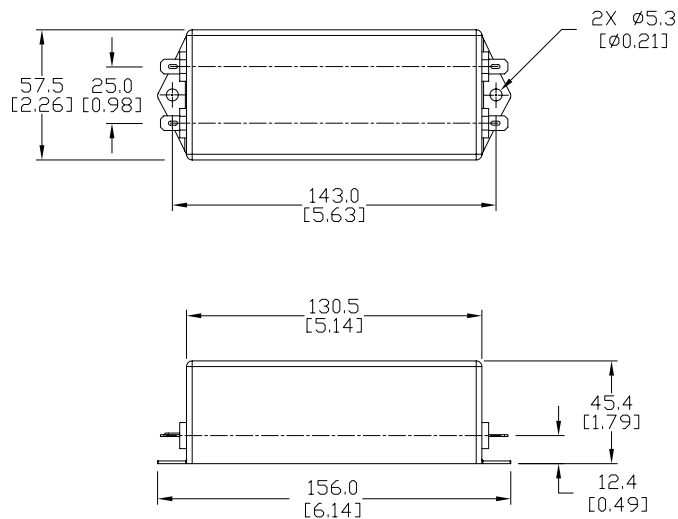


Roxburgh RES70 Series EMI Filters

Dimensions

mm [inches]

RES70F10 **RES70F12**



RES70S25 **RES70S36**

