

proSense® Thermocouple, RTD, and Thermistor Connectors

Overview

- Glass-filled high quality thermoplastic body with original thermocouple material pins and spring-loaded inserts
- Polarized pins
- Molded barriers prevent short circuit
- Captive central cover screw for easy assembly
- Easy wire connection pressure plate
- construction
- Stainless steel screws with combination head (Slotted and Phillips)
- 3-pin standard connectors have a third pin for ground or continuous shield, or for 3-wire RTDs

Thermocouple, RTD, and Thermistor Connectors												
Part Number	Pcs/ Pkg	Wt(lb)	Price	Sensor Type	Connector Type	Temperature Rating	Body Color	Wire Size	Wire Cable Clamp Bracket			
THMJ-SP	1	0.5	\$4.00	J	Standard round pin plug	Max continuous 400°F (200°C)	Black	32 AWG (0.2 mm) to 14 AWG maximum (2.0 mm)	WCB-S			
THMJ-SJ	1	0.5	\$5.25		Standard round pin jack				-			
THMJ-SPJ	1	0.5	\$10.00		Standard round direct mount jack							
THMJ-MP	1	0.5	\$3.75		Miniature flat pin plug			40 AWG (0.08 mm) to 20 AWG maximum (0.8 mm)		WCB-M		
THMJ-MJ	1	0.5	\$4.25		Miniature flat pin jack				-			
THMJ-MPJ	1	0.5	\$6.75		Miniature round direct mount jack							
THMK-SP	1	0.5	\$4.50	K	Standard round pin plug		Max continuous 662°F (350°C)	Yellow	32 AWG (0.2 mm) to 14 AWG maximum (2.0 mm)	WCB-S		
THMK-SJ	1	0.5	\$5.50		Standard round pin jack					-		
THMK-SPJ	1	0.5	\$10.00		Standard round direct mount jack							
THMK-MP	1	0.5	\$4.00		Miniature flat pin plug				40 AWG (0.08 mm) to 20 AWG maximum (0.8 mm)		WCB-M	
THMK-MJ	1	0.5	\$4.25		Miniature flat pin jack					-		
THMK-MPJ	1	0.5	\$7.50		Miniature round direct mount jack							
THMK-HSP	1	0.5	\$13.00	Standard hi-temp round pin plug	Max continuous 400°F (200°C)	Brown		32 AWG (0.2 mm) to 14 AWG maximum (2.0 mm)	WCB-S			
THMK-HSJ	1	0.5	\$15.00							Standard hi-temp round pin jack		
THMT-SP	1	0.5	\$4.25	T		Standard round pin plug			Max continuous 400°F (200°C)	Blue	40 AWG (0.08 mm) to 20 AWG maximum (0.8 mm)	WCB-M
THMT-SJ	1	0.5	\$5.75			Standard round pin jack						-
THMT-SPJ	1	0.5	\$9.50			Standard round direct mount jack						
THMT-MP	1	0.5	\$4.00			Miniature flat pin plug					-	
THMT-MJ	1	0.5	\$4.50			Miniature flat pin jack						
THMT-MPJ	1	0.5	\$8.00			Miniature round direct mount jack						
RTD-SP	1	0.5	\$9.00	RTD		Standard round pin plug	White	32 AWG (0.2 mm) to 14 AWG maximum (2.0 mm)		WCB-S		
RTD-SJ	1	0.5	\$11.50			Standard round pin jack						
NTC-SJ	1	0.5	\$6.75	Thermistor		Standard round pin jack						

[THMT-SP](#)



[THMT-SJ](#)



[THMK-SP](#)



[THMK-SJ](#)



[THMK-MP](#)



[THMJ-MJ](#)



[THMT-SPJ](#)



[THMT-MPJ](#)



[RTD-SP](#)



[RTD-SJ](#)



[THMK-HSP](#)



[THMK-HSJ](#)



[NTC-SJ](#)

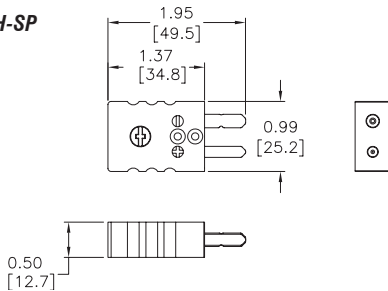


proSense® Thermocouple, RTD, and Thermistor Connectors

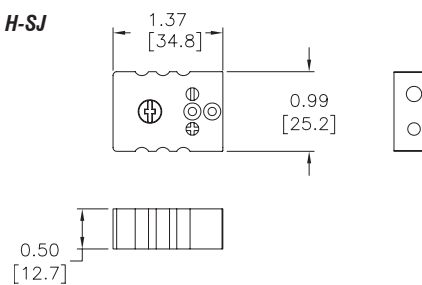
Dimensions

inches [mm]

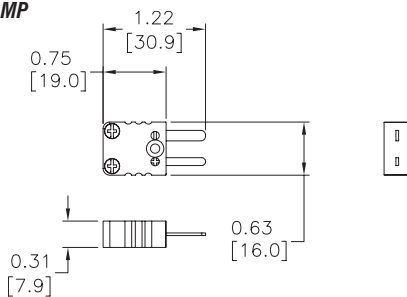
THMJ, K, T, & H-SP



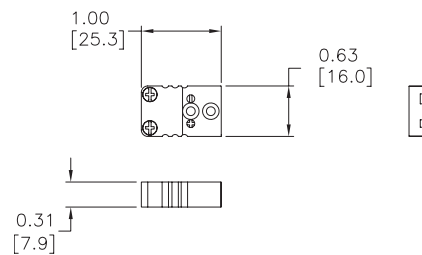
THMJ, K, T, & H-SJ



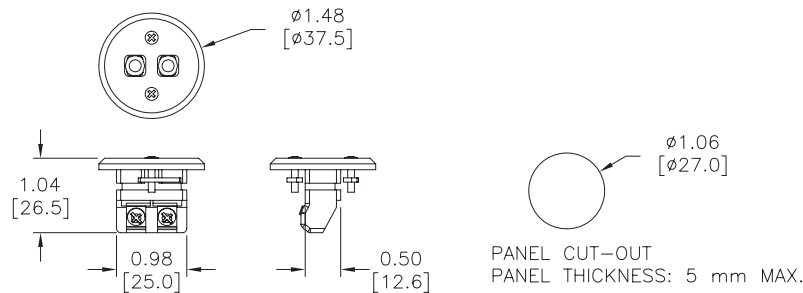
THMJ, K, & T-MP



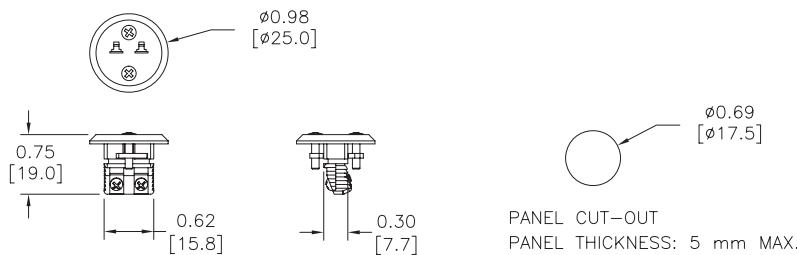
THMJ, K, & T-MJ



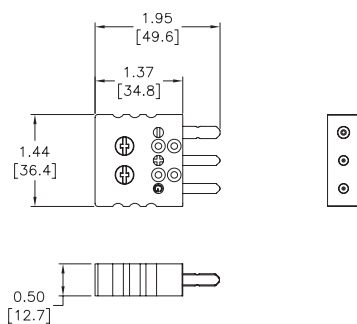
THMJ, K, & T-SPJ



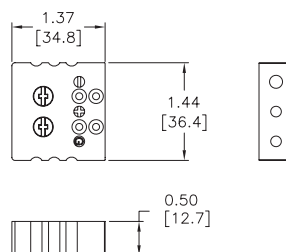
THMJ, K, & T-MPJ



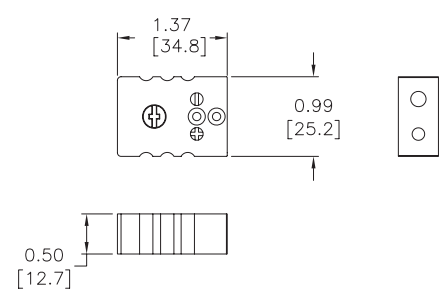
RTD-SP



RTD-SJ



NTC-SJ



pro^{ense}® Thermocouple and RTD Connectors

WCB-S



WCB-M



WCB-S Application



WCB-M Application

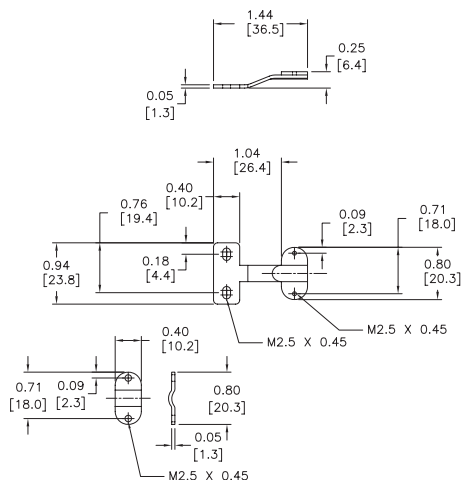


Thermocouple and RTD Connectors Accessories				
Part Number	Pcs/ Pkg	Wt(lb)	Price	Description
WCB-S	4	0.5	\$7.00	Wire / cable clamp bracket for use with standard thermocouple and RTD connectors.
WCB-M	4	0.5	\$6.75	Wire / cable clamp bracket for use with miniature thermocouple connectors.

Dimensions

inches [mm]

WCB-S



WCB-M

