

# pro<sup>sense</sup> Thermocouple Bolt-On Ring Sensors

THMJ & K - B01L06-01

THMJ & K - B01L06-02



## Overview

- Ideal thermocouple sensor for nozzles, extruder barrels, die heads, molds and many other surface sensing applications
- Type J or K thermocouple elements to meet many temperature sensing applications
- 316 SS or brass construction
- Grounded or ungrounded junctions
- 6 foot lead wires with stainless steel overbraid
- Made in the USA

Thermocouple Bolt-On Ring Sensors - Types J and K								
Part Number	Pcs/Pkg	Wt (lb)	Price	Type	Junction Type	Ring Material	Temperature Sensing Range	Mounting
<a href="#">THMJ-B01L06-01</a>	1	0.4	\$22.00	J	Grounded	316 SS	0° to 482°C (32° to 900°F)	#6-#10 (4mm-5mm) screw or bolt size
<a href="#">THMK-B01L06-01</a>			\$22.50	K				
<a href="#">THMJ-B01L06-02</a>			\$33.50	J	Ungrounded	Brass		
<a href="#">THMK-B01L06-02</a>			\$38.00	K				
<a href="#">THMJ-B02L06-01</a>			\$21.50	J	Grounded	316 SS		#12, 1/4 to 5/16 inch (5mm - 8mm) screw or bolt size
<a href="#">THMK-B02L06-01</a>			\$23.00	K				
<a href="#">THMJ-B02L06-02</a>			\$34.50	J	Ungrounded	Brass		
<a href="#">THMK-B02L06-02</a>			\$39.50	K				

Technical Specifications	
ASTM E230 Standard limits of Error	±2.2°C (±4.0°F) or 0.75%, whichever is greater
Response Time	2.9 seconds, 63.2% of a 25-77°C step change per method ASTM E839
Wiring	6 foot stranded 20 AWG wire leads with stripped ends, fiberglass insulation and stainless steel overbraid

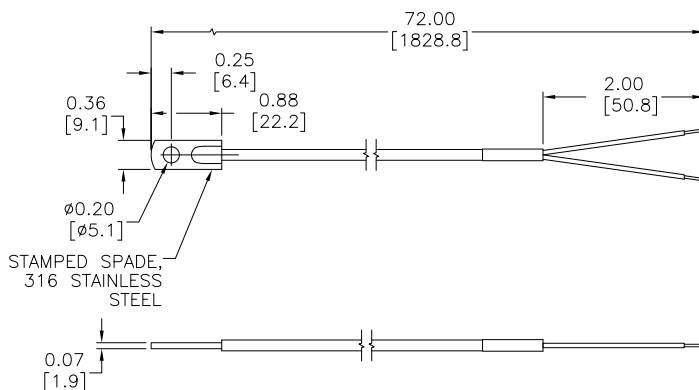


Note: Check the chemical compatibility of the sensor's wetted parts with the medium to be measured.

## Dimensions

inches [mm]

THMJ & K - B01L06-01



## Wiring Information

Type J: (+) white (-) red  
Type K: (+) yellow (-) red

- Must use thermocouple extension lead wire
- Observe polarity when making connections
- Do not use standard wire nuts

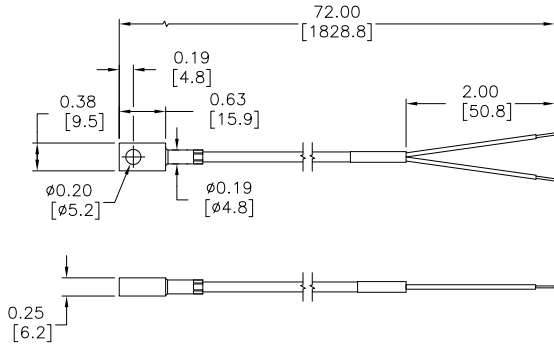


# pro<sup>sense</sup> Thermocouple Bolt-On Ring Sensors

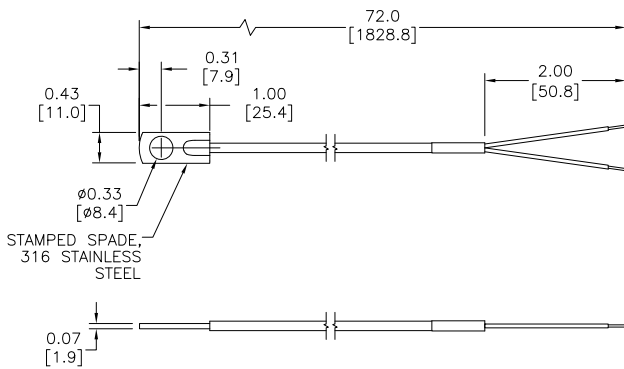
## Dimensions

inches [mm]

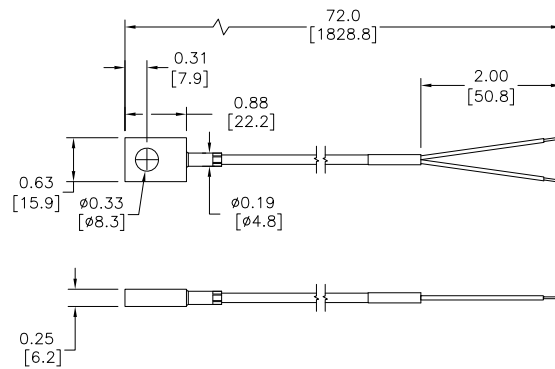
**THMJ & K - B01L06-02**



**THMJ & K - B02L06-01**



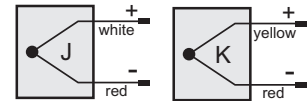
**THMJ & K - B02L06-02**



## Wiring Information

**Type J: (+) white (-) red**  
**Type K: (+) yellow (-) red**

- Must use thermocouple extension lead wire
- Observe polarity when making connections
- Do not use standard wire nuts



## Accessories

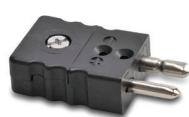
Part No.	Description	Pcs/Pkg	Price
<b><u>THMJ-SP</u></b>	Thermocouple connector, Type J, standard round pin plug, maximum continuous temperature 400°F (200°C), glass filled thermoplastic black body, thermocouple material pins, 14 AWG maximum (2.0 mm) wire size	1	\$4.00
<b><u>THMJ-SJ</u></b>	Thermocouple connector, Type J, standard round pin jack, maximum continuous temperature 400°F (200°C), glass filled thermoplastic black body, thermocouple material pins, 14 AWG maximum (2.0 mm) wire size	1	\$5.25
<b><u>THMK-SP</u></b>	Thermocouple connector, Type K, standard round pin plug, maximum continuous temperature 400°F (200°C), glass filled thermoplastic yellow body, thermocouple material pins, 14 AWG maximum (2.0 mm) wire size	1	\$4.50
<b><u>THMK-SJ</u></b>	Thermocouple connector, Type K, standard round pin jack, maximum continuous temperature 400°F (200°C), glass filled thermoplastic yellow body, thermocouple material pins, 14 AWG maximum (2.0 mm) wire size	1	\$5.50
<b><u>THMJ-SPJ</u></b>	Thermocouple connector, Type J, standard round pin panel jack, maximum continuous temperature 400°F (200°C), glass filled thermoplastic black body, thermocouple material pins, 14 AWG (2.0 mm) maximum wire size	1	\$10.00
<b><u>THMK-SPJ</u></b>	Thermocouple connector, Type K, standard round pin panel jack, maximum continuous temperature 400°F (200°C), glass filled thermoplastic yellow body, thermocouple material pins, 14 AWG (2.0 mm) maximum wire size	1	\$10.00
<b><u>WCB-S</u></b>	Wire / cable clamp bracket for use with standard thermocouple and RTD connectors.	4	\$12.00

Note: Thermocouple extension lead wire available at [www.automationdirect.com](http://www.automationdirect.com)  
 See end of section for full listing of accessories and dimension information.

**THMJ-SJ**



**THMJ-SP**



**THMJ-SPJ**



**Thermocouple Connectors**