

prosense® RTD Melt Bolt Probes



RTD1-MB3T14-01

Overview

- Used on extruders and injection molding machines to directly measure the melt temperature of plastic as it moves down the extruder barrel
- 100 ohm platinum RTD 3-wire element
- Class A accuracy
- 3" or 6" bolt lengths
- Flush, 1/8", 1/4" tip lengths
- 1/2-20 UNF thread process connection
- Made in the USA

RTD Melt Bolt Probes										
Part Number	Pcs/Pkg	Wt (lb)	Price	Type	Tip Length	Tip Diameter	Bolt length	Temperature Sensing Range	Attached Plug Size	Mating Jack
RTD1-MB3T00-01	1	0.63	\$80.00	PT 100, Class A, 3-wire	Flush	1/8"	3"	-40 to 316°C (-40 to 600°F)	Standard	RTD-SJ
RTD1-MB3T18-01	1	0.63	\$80.00		1/8"					
RTD1-MB3T14-01	1	0.63	\$80.00		1/4"					
RTD1-MB6T00-01	1	0.75	\$87.00		Flush		6"			
RTD1-MB6T18-01	1	0.75	\$87.00		1/8"					
RTD1-MB6T14-01	1	0.75	\$87.00		1/4"					

Technical Specifications	
Sensing Element	Single 100Ω platinum (Pt 100), 3-wire; TCR = 0.00385 Ω/Ω/°C
Initial Accuracy	Class A ±[0.15 +0.002 t] °C
Probe	316 stainless steel sheath
Bolt Threads	1/2-20 UNF - 2A Bolt Thread (Nominal Thread Length 1-7/8")
Response Time	7 seconds, 63% of a 25 to 77°C step change (ASTM E1137)
Wiring	Kapton insulation with flexible armor Attached plug, mating jack sold separately. See accessories.

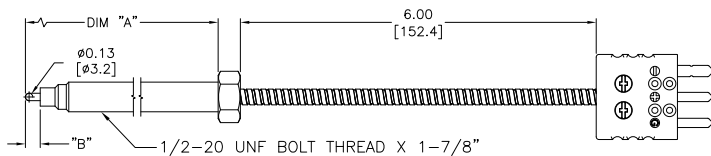


Note: Check the chemical compatibility of the sensor's wetted parts with the medium to be measured.

Dimensions

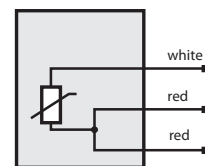
inches [mm]

RTD1-MBXTX-01



PART NUMBER	DIM "A"	DIM "B"
RTD1-MB3T00-01	3.00[76.2]	0.00[FLUSH]
RTD1-MB3T14-01	3.00[76.2]	0.25[6.4]
RTD1-MB3T18-01	3.00[76.2]	0.125[3.2]
RTD1-MB6T00-01	6.00[152.4]	0.00[FLUSH]
RTD1-MB6T14-01	6.00[152.4]	0.25[6.4]
RTD1-MB6T18-01	6.00[152.4]	0.125[3.2]

Wiring Information



prosense® RTD Melt Bolt Probes

Accessories

Part No.	Description	Pcs/Pkg	Price
<u>RTD-SP</u>	RTD 3-pin connector, standard round pin plug, maximum continuous temperature 400°F (200°C), white body, copper pins, 14 AWG maximum (2.0 mm) wire size	1	\$9.00
<u>RTD-SJ</u>	RTD 3-pin connector, standard round pin jack, maximum continuous temperature 400°F (200°C), white body, copper pins, 14 AWG maximum (2.0 mm) wire size	1	\$11.50
<u>WCB-S</u>	Wire / cable clamp bracket for use with standard thermocouple and RTD connectors	4	\$12.00

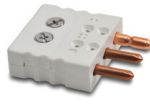
Note: RTD extension lead wire available at www.automationdirect.com

See end of section for full listing of accessories and dimension information.

RTD-SJ



RTD-SP



RTD Connectors