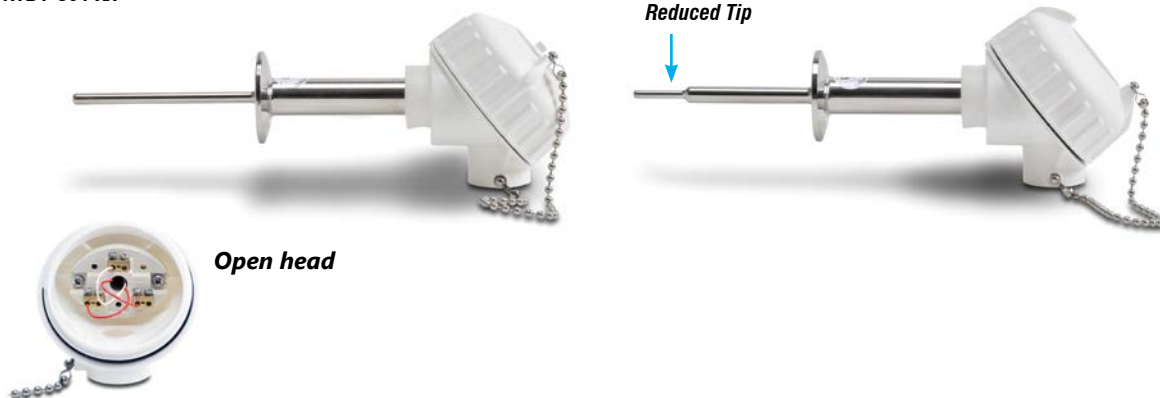


prosense® RTD Sanitary Clean-in-Place (CIP) Probes

RTD1-S04-XX



Overview

- Designed to meet the stringent requirements of HTST pasteurization systems
- Probe
 - 100 ohm platinum RTD 3-wire element
 - Class A accuracy
 - Clean-in-place (CIP) sanitary 316 SS connectors for use in processing applications where sensor corrosion and product contamination are critical factors
 - Certified to meet or exceed 3-A Sanitary Council Standard surface finish specifications
 - 316 SS sheaths available in standard 1/4" diameter, or 3/8" diameter with 3/16" diameter reduced tip for greater durability in high viscosity applications
 - Commonly used 4" probe insertion length
- Connection head
 - FDA compliant white thermoplastic screw cover head with captive o-ring seal provides excellent washdown protection
 - One turn cover removal & installation eliminates cross threading and saves time
 - 3/4" NPT conduit opening with internal stop to prevent overtightening and installation damage
 - Gripping ribs on cover edge
 - Stainless steel cover chain
- Wiring
 - Ceramic terminal base
 - Brass terminals with stainless steel screws eliminate the need to wrap connections around screws
 - Elevated terminal block for easy wire termination
- Made in the USA



RTD Probes with Leadwire Transition								
Part Number	Pcs/Pkg	Wt (lb)	Price	Type	Probe Diameter (O.D.)	Probe Insertion Length	Temperature Sensing Range	Mounting
RTD1-S04-01	1	1.0	\$124.00	PT 100, 3-wire	1/4"	4"	-50 to 204°C (-58 to 400°F)	1" or 1-1/2" tri-clamp
RTD1-S04-02			\$132.00		2" tri-clamp			
RTD1-S04-03			\$158.00		3/8" O.D. reduced to 3/16" O.D. x 1-1/4" long tip			1" or 1-1/2" tri-clamp
RTD1-S04-04			\$160.00					2" tri-clamp

Technical Specifications	
Sensing Element	Single 100Ω platinum (Pt 100), 3-wire; TCR = 0.00385Ω/Ω/°C
Initial Accuracy	Class A ±[0.15+0.002 t]°C
Probe & Process Connection	316 stainless steel sheath and 316 stainless steel sanitary CIP tri-clamp connection with a minimum 32 micro-inch Ra food grade surface finish. Meets or exceeds 3-A Sanitary Council Standard specifications
Connection Head	FDA compliant white polypropylene screw cover with stainless steel chain, BUNA-N o-ring seal, NEMA 4X, 3/4" NPT conduit opening max. temp. 250°F (121°C)
Response Time	<4 seconds, 63% of 25 to 77°C step change (ASTM E1137)
Wiring	Ceramic terminal base with brass terminals and stainless steel screws (Recommended tightening torque 3-4 lb-in)



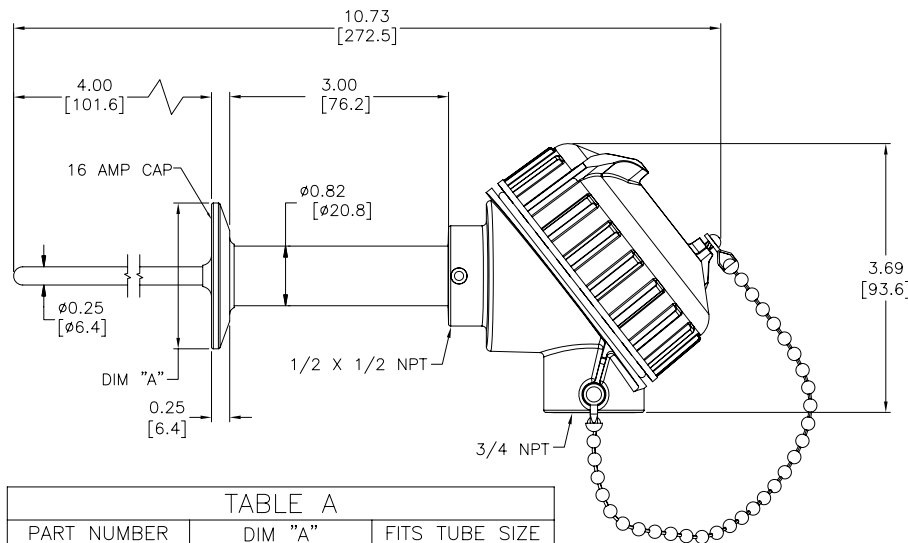
Note: Check the chemical compatibility of the sensor's wetted parts with the medium to be measured.

prosense® RTD Sanitary Clean-in-Place (CIP) Probes

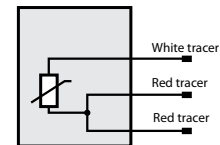
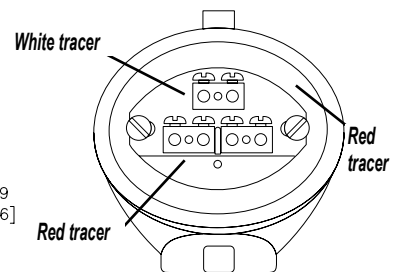
Dimensions

inches [mm]

RTD1-S04-01 and 02

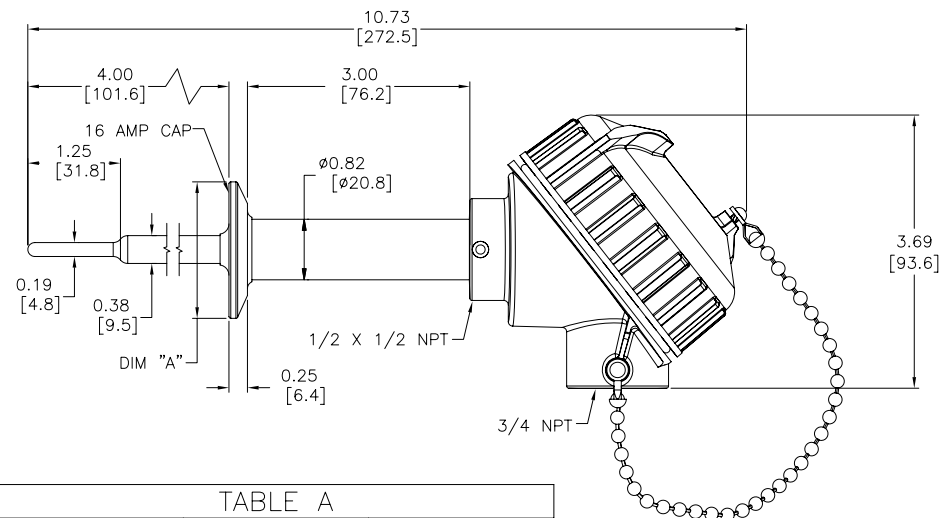


Wiring Information



- Ignore polarity marks on terminal base
- Recommended screw terminal tightening torque 3-4 lb-in
- After wiring connections are made, terminals should be protected by applying a coating of moisture-proof sealant such as a silicone caulking

RTD1-S04-03 and 04



Accessories

RTD extension lead wire available at www.automationdirect.com