

prosense® Pipe Clamp Adapters

**PCA-300**

Overview

- For use with ProSense adjustable immersion thermocouple and RTD sensors
- Available in adjustable diameters from 11/16 to 7 inches
- Provides an easy means of sensing temperature on the outside of a pipe



Shown with optional adjustable immersion sensor

Pipe Clamp Adapters for ProSense Adjustable Immersion Sensors

| Part Number | Description | Pcs/ Pkg | Wt(lb) | Price |
|----------------|---|-------------|--------|---------|
| PCA-125 | ProSense pipe clamp adapter, 11/16 to 1-1/4 inch adjustable diameter, 2-inch attached bayonet adapter with 7/16 inch outside diameter and 9/32 inch inside diameter. Use with Prosense adjustable immersion sensors. | 1 | 0.1 | \$19.00 |
| PCA-200 | ProSense pipe clamp adapter with 1-1/16 to 2 inch adjustable diameter, 2-inch attached bayonet adapter with 7/16 inch outside diameter and 9/32 inch inside diameter. Use with Prosense adjustable immersion sensors. | 1 | 0.1 | \$19.00 |
| PCA-300 | ProSense pipe clamp adapter with 2-1/16 to 3 inch adjustable diameter, 2-inch attached bayonet adapter with 7/16 inch outside diameter and 9/32 inch inside diameter. Use with Prosense adjustable immersion sensors. | 1 | 0.1 | \$21.00 |
| PCA-425 | ProSense pipe clamp adapter with 3-5/16 to 4-1/4 inch adjustable diameter, 2-inch attached bayonet adapter with 7/16 inch outside diameter and 9/32 inch inside diameter. Use with Prosense adjustable immersion sensors. | 1 | 0.1 | \$24.00 |
| PCA-500 | ProSense pipe clamp adapter with 4-1/8 to 7 inch adjustable diameter, 2-inch attached bayonet adapter with 7/16 inch outside diameter and 9/32 inch inside diameter. Use with Prosense adjustable immersion sensors. | 1 | 0.1 | \$22.50 |

Dimensions

inches [mm]

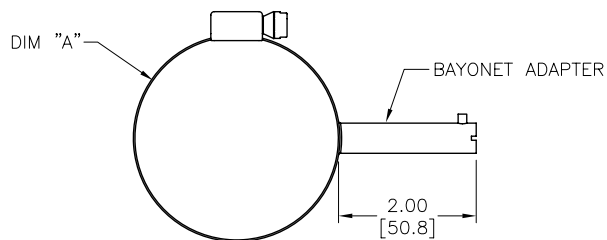


TABLE A

| PART NUMBER | DIM "A" | FITS PIPE SIZES |
|-------------|---------------------------|-----------------|
| PCA-125 | ø0.68–1.25 [ø17.2–31.7] | 1/2 TO 3/4 NPS |
| PCA-200 | ø1.06–2.00 [ø26.9–50.8] | 1 TO 1-1/2 NPS |
| PCA-300 | ø2.06–3.00 [ø52.3–76.2] | 2 TO 2-1/2 NPS |
| PCA-425 | ø3.31–4.25 [ø84.1–108.0] | 3 TO 3-1/2 NPS |
| PCA-500 | ø4.12–7.00 [ø104.6–177.8] | 4 TO 6 NPS |