

Fork Sensors PS Series

Fork Sensor U-Frame - Food Applications



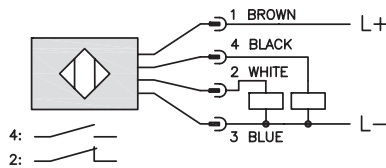
Features:

- Rugged metal one-piece housing - always in alignment
- Easy installation
- Stainless steel slot sensor
- Visible red light
- Food applications
- Complementary
- Light-on/Dark-on
- High switching frequency
- M12 connector with cable

Fork Sensor U-frame - Food Applications PS Series Selection Chart							
Part Number	Price	Sensing Range	Output State	Logic	Connection	Wiring	Dimensions
<u>PSUFR-0P-5F</u>	\$383.00	50mm [1.18 in]	Complementary Light-on/Dark-on	PNP	M12 connector	Diagram 1	Figure 1
<u>PSUFR-0P-6F</u>	\$407.00	80mm [3.15 in]				Diagram 1	Figure 2

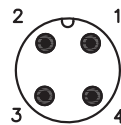
Wiring Diagrams

Diagram 1



Connectors

M12 connector



Fork Sensors PS Series

Specifications	
	<i>Food Applications</i>
Mounting Type	Slot
Sensing Distance	50mm [1.97 in] to 80mm [3.15 in]
Smallest Detectable Object	PSUFR 5F 0.8 mm [0.003 in] PSUFR 6F 1.0 mm [0.04 in]
Emission	Visible Red Light
Output Type	PNP/ Light on/Dark on/ 4-wire
Operating Voltage	10 to 30VDC
No-load Supply Current	≤ 35mA
Operating (Load) Current	200mA
Off-state (Leakage) Current	N/A
Voltage Drop	≤ 3.0V [PNP]
Switching Frequency	3kHz
Differential Travel	N/A
Repeat Accuracy	25μ
Ripple	N/A
Time Delay Before Availability (tv)	N/A
Reverse Polarity Protection	Yes
Short-Circuit Protection	Yes
Operating Temperature	-10 to 60°C [14 to 140°F]
Protection Degree (DIN 40050)	IP67/IP69k
Indication/Switch Status	On Yellow LED
Housing Material	316 L Stainless Steel
Sensing Face Material	PMMA
Shock	Meets IEC 68-2-27 [See Photoelectric Sensor at the end of this section for more details]
Vibration	Meets IEC 68-2-6 [See Photoelectric Sensor at the end of this section for more details]
Tightening Torque	N/A
Weight	PSUFx5F 285g [10.05 oz] PSUFx6F 340g [11.99 oz]
Connection	0.25m PUR cable with 4-pin M12 quick-disconnect
Agency Approvals	CE

Note: To obtain the most current agency approval information – see the Agency Approval Checklist section on the specific part number's web page.

Fork Sensors PS Series

Dimensions

mm [inches]

Figure 1

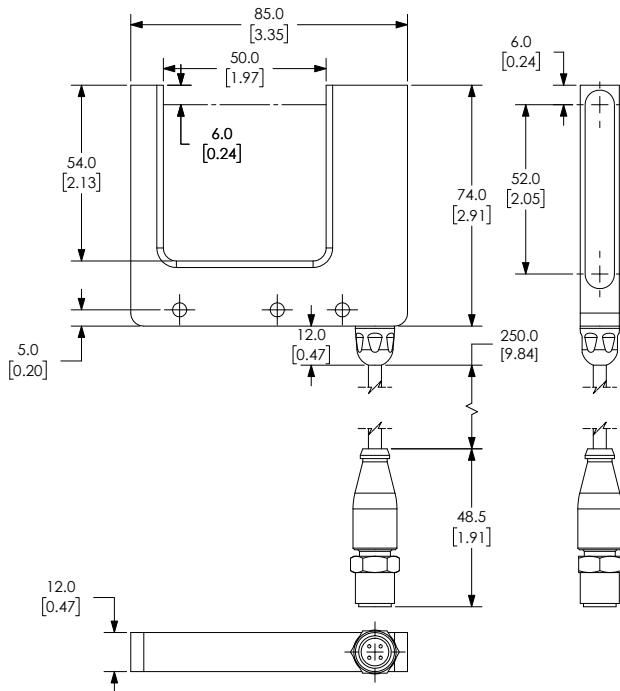
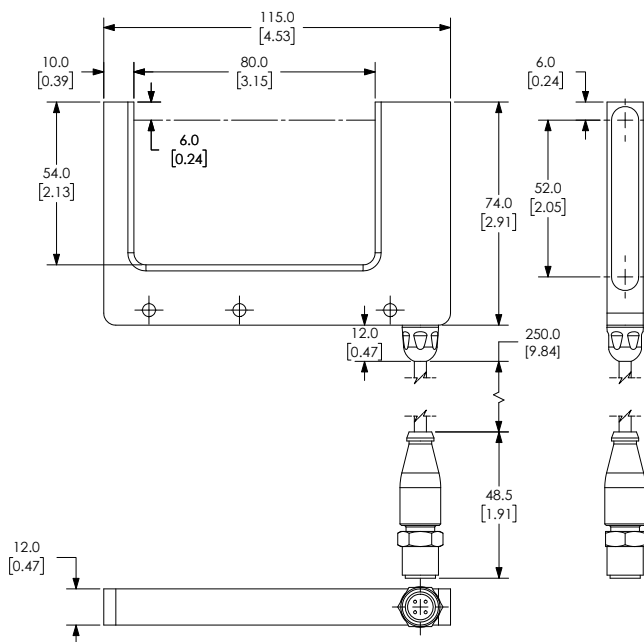


Figure 2



See our website: www.AutomationDirect.com for complete Engineering drawings.