

WST Series Weld Slag Resistant Inductive Proximity Sensors



M30 (30mm)

- Low cost/high performance
- Weld slag resistant coating
- Inductive sensor
- Full metal housing
- Increased sensing range
- Gold-plated contacts
- Flush mounting
- Lifetime warranty



WST Series M30 Inductive Proximity Selection Chart

Part Number	Price	Sensing Range	Mounting	Output State	Logic	Voltage	Connection	Wiring	Dimensions
<u>WST-AP-3H</u>	Retired	15mm [0.59 mm]	Flush	N.O.	PNP	10 - 30 VDC	4-pin M12 quick-disconnect	Diagram 1	Figure 1
<u>WST-A0-3E</u>	Retired	12mm [0.47 mm]			PNP/NPN	10-36 VDC	4-pin M12 with 0.3 m cable	Diagram 2	Figure 3
<u>WST-A0-3A</u>	Retired						3m axial cable	Diagram 3	

Wiring Diagrams

Diagram 1

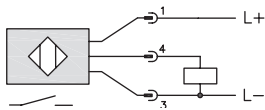


Diagram 2

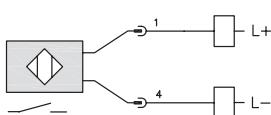
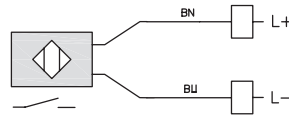


Diagram 3



Connectors

4-pin M12 NPN



4-pin M12 PNP



4-pin M12 0.3m



Dimensions

mm [inches]

Figure 1

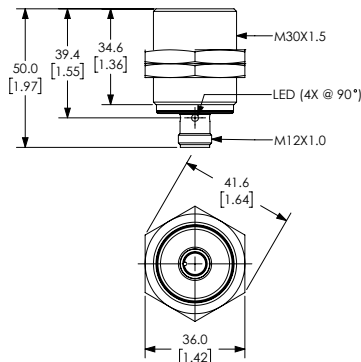


Figure 2

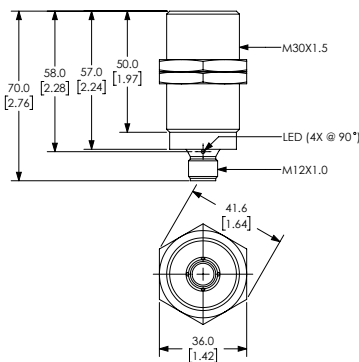
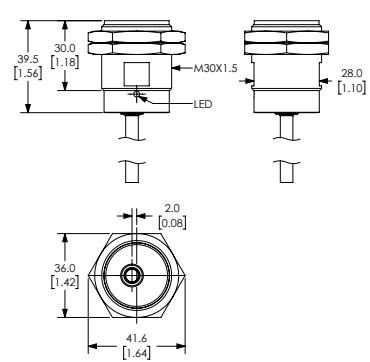


Figure 3



WST Series Weld Slag Resistant Inductive Proximity Sensors

WST Series M30 Inductive Proximity Specifications			
Models	<u>WST-AP-3H</u>	<u>WST-A0-3E</u>	<u>WST-A0-3A</u>
Mounting Type	Flush		
Nominal Sensing Distance	15mm [0.59 in]	12mm [0.47 in]	
Operating Distance	0 - 12.15 mm		
Material Correction Factors	See the Material Influence table		
Output Type	N.O.		
Operating Voltage	10 to 30 VDC	10 to 36 VDC	
No-load Supply Current	< 10 mA	NA	
Operating (Load) Current	< 100 mA		
Off-state Leakage Current	NA	< 0.6 mA	
Voltage Drop	< 2.5 V		
Switching Frequency	2Hz	25Hz	
Differential Travel (% of Nominal Distance)	3 - 15	1- 20	
Repeat Accuracy	NA		
Ripple	NA		
Time Delay Before Availability (tv)	NA		
Short Circuit Protection	Yes		
Operating Temperature	-40 to 85°C [-40 to 185°F]	-25 to 70°C [-13 to 158°F]	
Protection Degree (DIN 40050)	IP65 / IP66 / IP67 / IP68 / IP69K	IP67	
LED Indicators	Illuminated when energized		
Housing Material	Stainless steel 316L / 1.4404 with anti-spatter ceramic (Polytetrafluoroethylene [PTFE]) coating		
Sensing Face Material	active face: stainless steel 316L 1.4404 anti-spatter		
Shock/Vibration	See Proximity Sensor Terminology		
Weight	0.115 kg	0.135 kg	0.227 kg
Connection	4-pin M12 quick-disconnect	PUR cable / 0.3 m; 2 x 0.5 mm²; with 4-pin M12 quick-disconnect	PUR cable / 3 m; 2 x 0.5 mm²
Agency Approvals	cULus E328811, CE		

To obtain the most current agency approval information, see the Agency Approval Checklist section on the specific part number's web page.