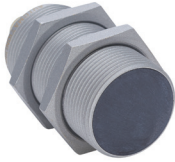


# WKT Series Factor 1 Weld-Field Immune Inductive Proximity Sensors

## M30 (30mm)



- Correction Factor (K-Factor) = 1
- Low cost/high performance
- Weld slag resistant coating
- Inductive sensor
- Metal thread M12 x 1 Connector
- Increased sensing range
- Gold-plated contacts
- Electromagnetic field immune
- Flush mounting
- Lifetime warranty

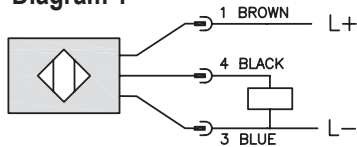


### WKT Series M30 Inductive Proximity Selection Chart

Part Number	Price	Sensing Range	Mounting	Output State	Logic	Voltage	Connection	Wiring	Dimensions
<b>WKT-AP-3H</b>	\$45.00	15 mm [0.59 mm]	Flush	N.O.	PNP	10 - 30 VDC	4-pin M12 quick-disconnect	Diagram 1	Figure 1

## Wiring Diagrams

Diagram 1



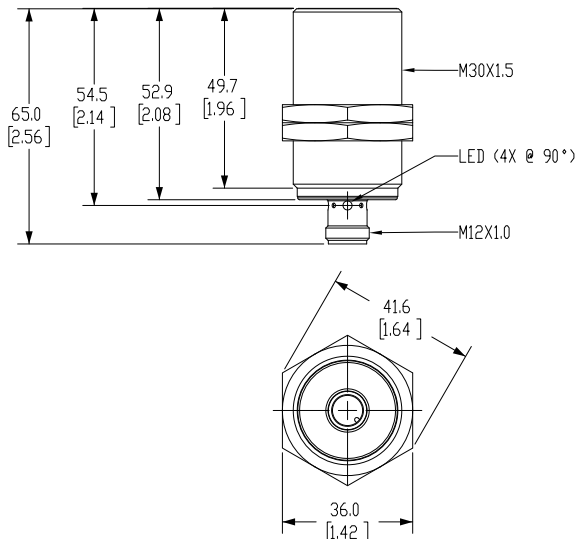
Connector



## Dimensions

mm [inches]

Figure 1



# WKT Series Factor 1 Weld-Field Immune Inductive Proximity Sensors

WKT Series M30 Inductive Proximity Specifications	
<b>Model</b>	<b><u>WKT-AP-3H</u></b>
<b>Mounting Type</b>	Flush
<b>Nominal Sensing Distance</b>	15mm [0.59 in]
<b>Operating Distance</b>	0-12.15 mm [0-0.49 in]
<b>Material Correction Factors</b>	Correction Factor (K-Factor) = 1
<b>Output Type</b>	N.O.
<b>Operating Voltage</b>	10 to 30 VDC
<b>No-load Supply Current</b>	< 20mA
<b>Operating (Load) Current</b>	100mA
<b>Off-state Leakage Current</b>	NA
<b>Voltage Drop</b>	< 2.5 V
<b>Switching Frequency</b>	2000Hz
<b>Differential Travel (% of Nominal Distance)</b>	3 - 15
<b>Repeat Accuracy</b>	NA
<b>Ripple</b>	NA
<b>Time Delay Before Availability (tv)</b>	NA
<b>Short Circuit Protection</b>	Yes
<b>Operating Temperature</b>	-40 to 85 °C [-40 to 185 °F]
<b>Protection Degree (DIN 40050)</b>	IP65 / IP66 / IP67 / IP68 / IP69K
<b>LED Indicators</b>	Illuminated when energized
<b>Housing Material</b>	Brass with anti-spatter ceramic (Polytetrafluoroethylene [PTFE]) coating; LED window: Polyetherimide [PEI]
<b>Sensing Face Material</b>	active face: Liquid Crystal Polymer [LCP] black
<b>Shock/Vibration</b>	See <a href="#">Proximity Sensor Terminology</a>
<b>Weight</b>	0.112 kg [0.247 lb]
<b>Connection</b>	4-pin M12 quick-disconnect
<b>Agency Approvals</b>	cULus E328811, CE

To obtain the most current agency approval information, see the Agency Approval Checklist section on the specific part number's web page.