

# CR Series Capacitive Proximity Sensors



## Rectangular Plastic - DC

- Low profile housing ideal for sight glass applications
- N.O./N.C. selectable
- IP65/IP67 rated
- LED status indicators
- Auto-detect circuit
- Push button teach
- Mounting accessories available

### CR Series Capacitive Proximity Selection Chart

Part Number	Price	Sensing Distance	Mounting	Output State	Logic	Connection	Wiring	Dimensions
<b>CR1-00-2A</b>	\$71.00	12 mm [0.47 in]	Non-flush	N.O./N.C.	NPN/PNP	2m [6.5 ft] axial cable	Diagram 1	Figure 1

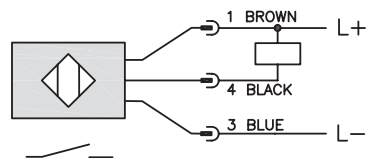
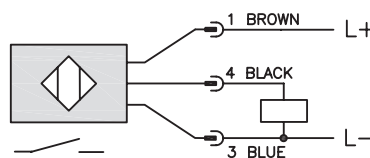
### CR Series Capacitive Proximity Specifications

<b>Mounting Type</b>	Non-flush
<b>Nominal Sensing Distance</b>	12mm [0.47 in]
<b>Operating Distance</b>	NA
<b>Material Correction Factors</b>	
<b>Output Type</b>	NPN/PNP; N.O./N.C.
<b>Operating Voltage</b>	10 to 36VDC
<b>No-load Supply Current</b>	< 17mA
<b>Operating (Load) Current</b>	100mA
<b>Off-state (Leakage) Current</b>	NA
<b>Voltage Drop</b>	< 2.5V
<b>Switching Frequency</b>	10Hz
<b>Differential Travel (% of Nominal Distance)</b>	NA
<b>Repeat Accuracy</b>	
<b>Ripple</b>	
<b>Time Delay Before Availability (tv)</b>	
<b>Reverse Polarity Protection</b>	Yes
<b>Short-circuit Protection</b>	Yes, pulsed
<b>Operating Temperature</b>	-25 to 80°C [-13 to 176°F]
<b>Protection Degree (DIN 40050)</b>	IEC IP65/IP67
<b>Indication/Switch Status</b>	Yellow [output energized]
<b>Housing Material</b>	Polybutylene Terephthalate [PBT]
<b>Sensing Face Material</b>	
<b>Shock/Vibration</b>	DIN EN 60947-5-2
<b>Tightening Torque</b>	NA
<b>Weight</b>	92g [3.25 oz]
<b>Connectors</b>	2m [6.5 ft] axial cable
<b>Agency Approvals</b>	cULus file E328811, CE, RoHS

To obtain the most current agency approval information, see the Agency Approval Checklist section on the specific part number's web page.

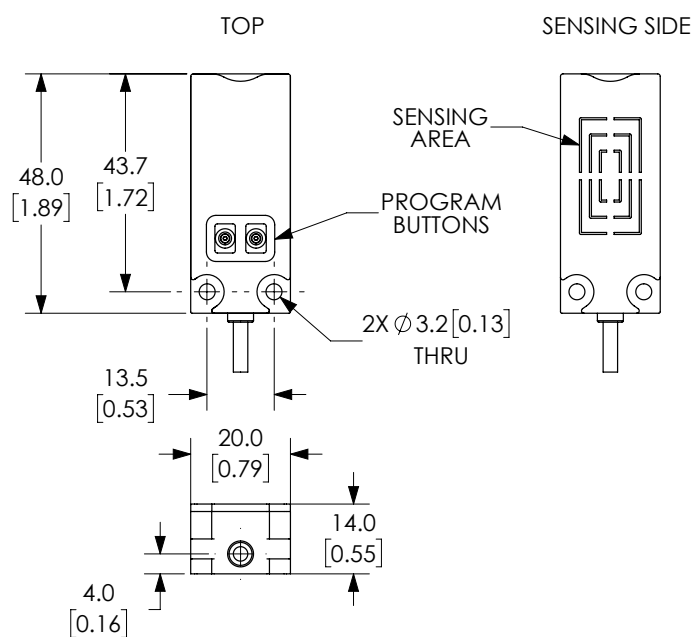
# CR Series Capacitive Proximity Sensors

## Wiring Diagrams

**Diagram 1****NPN Output****PNP Output**

## Dimensions

mm [inches]

**Figure 1**See our website: [www.AutomationDirect.com](http://www.AutomationDirect.com) for complete engineering drawings

# Capacitive Proximity Sensors - Accessories



Mounting Well

Mounting Adapter

Capacitive Proximity Sensors Accessory Chart				
Part Number	Price	Description	Material	Dimensions
<b>Mounting Adapter</b>				
<b>CR1-ADPTR</b>	\$4.50	Adapter for CR1 series capacitive sensors	Housing: Polybutylene Terephthalate (PBT) Included Screws: M3 x 6 Steel (0.5 N•m [0.37 lb•ft])	Figure 1
<b>Mounting Wells</b>				
<b>MWT-01</b>	\$52.00	30mm [1.18 in] sensor mounting well	PTFE - Polytetrafluoroethylene (Teflon®) Temp: -25 to 246°C [-13 to 474.8°F] Max. pressure: 100 PSI [6.9 bar]	Figure 2
<b>MWK-01</b>	\$42.50	18mm [0.71 in] sensor mounting well		Figure 3

## Dimensions

mm [inches]

Figure 1

CR1 Adapter

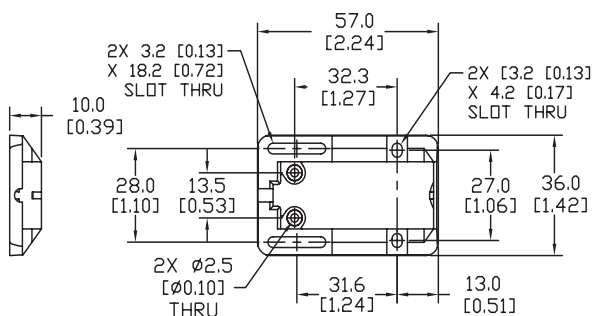


Figure 2

30mm Sensor Mounting Well

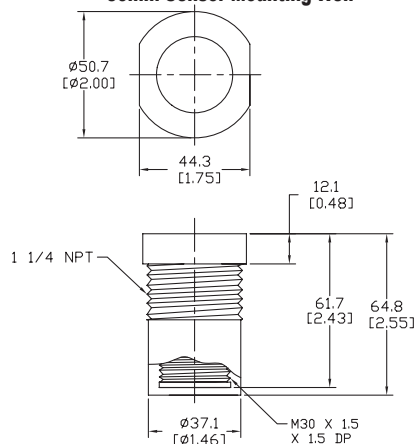
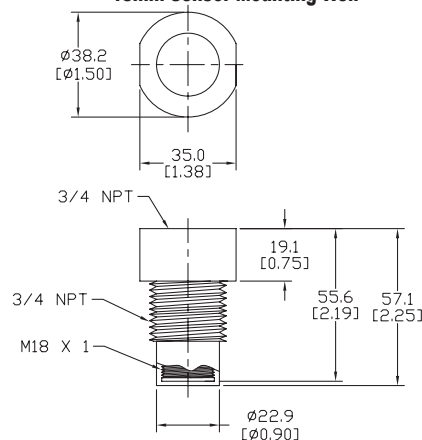


Figure 3

18mm Sensor Mounting Well

See our website: [www.AutomationDirect.com](http://www.AutomationDirect.com) for complete engineering drawings