

# CR Series Capacitive Proximity Sensors



## Rectangular plastic - DC

- Low profile housing ideal for sight glass applications
- N.O./N.C. selectable
- IP65/IP67 rated
- LED status indicators
- Auto-detect circuit
- Push button teach
- Mounting accessories available

### CR Series Capacitive Proximity Selection Chart

Part Number	Price	Sensing Distance	Mounting	Output State	Logic	Connection	Wiring	Dimensions
CR1-00-2A	\$71.00	12 mm [0.47 in]	Non-flush	N.O./N.C.	NPN/PNP	2m [6.5 ft] axial cable	Diagram 1	Figure 1

### CR Series Capacitive Proximity Specifications

Mounting Type	Non-flush
Nominal Sensing Distance	12mm [0.47 in]
Operating Distance	NA
Material Correction Factors	NA
Output Type	NPN/PNP; N.O./N.C.
Operating Voltage	10 to 36VDC
No-load Supply Current	< 17mA
Operating (Load) Current	100mA
Off-state (Leakage) Current	NA
Voltage Drop	< 2.5V
Switching Frequency	10Hz
Differential Travel (% of Nominal Distance)	NA
Repeat Accuracy	NA
Ripple	NA
Time Delay Before Availability (tv)	NA
Reverse Polarity Protection	Yes
Short-circuit Protection	Yes, pulsed
Operating Temperature	-25 to 80°C [-13 to 176°F]
Protection Degree (DIN 40050)	IEC IP65/IP67
Indication/Switch Status	Yellow [output energized]
Housing Material	Polybutylene Terephthalate [PBT]
Sensing Face Material	Polybutylene Terephthalate [PBT]
Shock/Vibration	DIN EN 60947-5-2
Tightening Torque	NA
Weight	92g [3.25 oz]
Connectors	2m [6.5 ft] axial cable
Agency Approvals	cULus file E328811, CE, RoHS

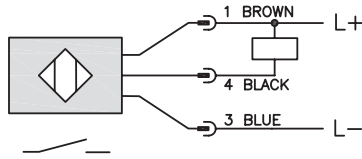
To obtain the most current agency approval information, see the Agency Approval Checklist section on the specific part number's web page.

# CR Series Capacitive Proximity Sensors

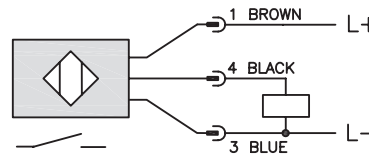
## Wiring Diagrams

**Diagram 1**

**NPN Output**



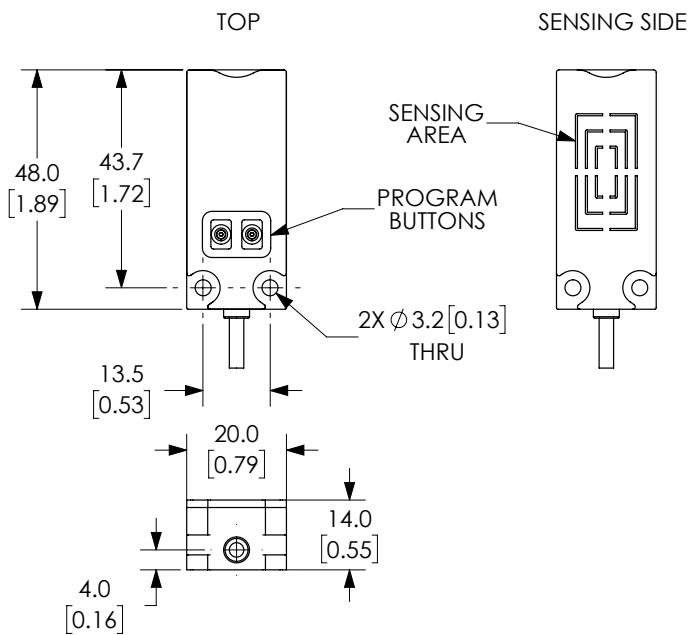
**PNP Output**



## Dimensions

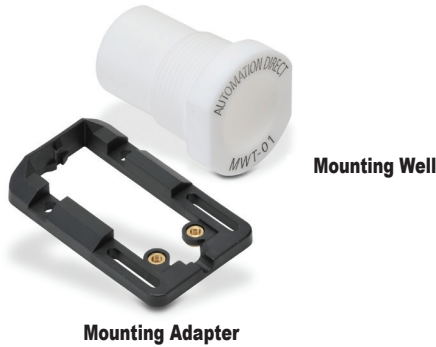
mm [inches]

**Figure 1**



See our website: [www.AutomationDirect.com](http://www.AutomationDirect.com) for complete engineering drawings

# Capacitive Proximity Sensors - Accessories



Capacitive Proximity Sensors Accessory Chart				
Part Number	Price	Description	Material	Dimensions
<b>Mounting Adapter</b>				
<u>CR1-ADPTR</u>	\$4.50	Adapter for CR1 series capacitive sensors	Housing: Polybutylene Terephthalate (PBT) Included Screws: M3 x 6 Steel (0.5 N•m [0.37 lb•ft])	Figure 1
<b>Mounting Wells</b>				
<u>MWT-01</u>	\$52.00	30mm [1.18 in] sensor mounting well	PTFE - Polytetrafluoroethylene (Teflon®) Temp: -25 to 246°C [-13 to 474.8°F] Max. pressure: 100 PSI [6.9 bar]	Figure 2
<u>MWK-01</u>	\$42.50	18mm [0.71 in] sensor mounting well		Figure 3

## Dimensions

mm [inches]

Figure 1

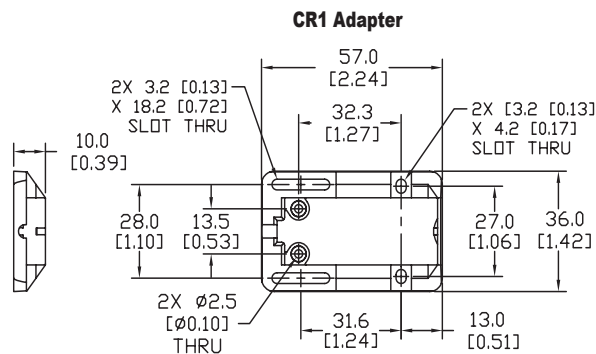


Figure 2

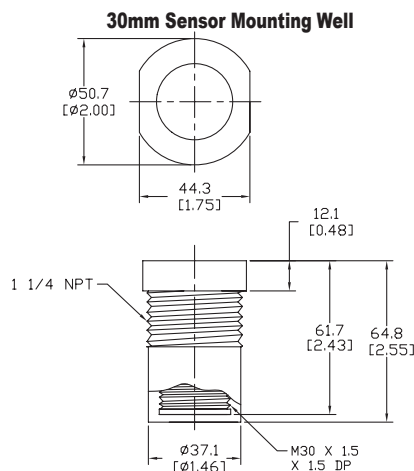
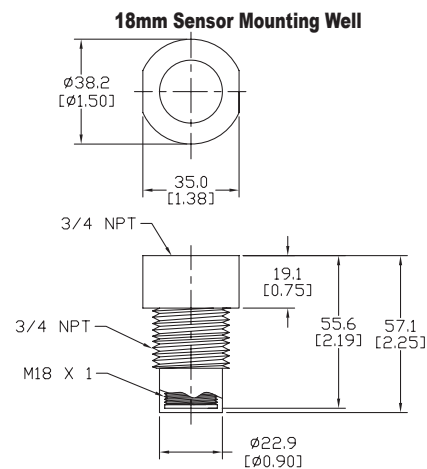


Figure 3



See our website: [www.AutomationDirect.com](http://www.AutomationDirect.com) for complete engineering drawings