

CR Series Capacitive Proximity Sensors



Rectangular plastic - DC

- Low profile housing ideal for sight glass applications
- N.O./N.C. selectable
- IP65/IP67 rated
- LED status indicators
- Auto-detect circuit
- Push button teach
- Mounting accessories available

CR Series Capacitive Proximity Selection Chart

Part Number	Price	Sensing Distance	Mounting	Output State	Logic	Connection	Wiring	Dimensions
CR1-00-2A	\$71.00	12 mm [0.47 in]	Non-flush	N.O./N.C.	NPN/PNP	2m [6.5 ft] axial cable	Diagram 1	Figure 1

CR Series Capacitive Proximity Specifications

Mounting Type	Non-flush
Nominal Sensing Distance	12mm [0.47 in]
Operating Distance	NA
Material Correction Factors	NA
Output Type	NPN/PNP; N.O./N.C.
Operating Voltage	10 to 36VDC
No-load Supply Current	< 17mA
Operating (Load) Current	100mA
Off-state (Leakage) Current	NA
Voltage Drop	< 2.5V
Switching Frequency	10Hz
Differential Travel (% of Nominal Distance)	NA
Repeat Accuracy	NA
Ripple	NA
Time Delay Before Availability (tv)	NA
Reverse Polarity Protection	Yes
Short-circuit Protection	Yes, pulsed
Operating Temperature	-25 to 80°C [-13 to 176°F]
Protection Degree (DIN 40050)	IEC IP65/IP67
Indication/Switch Status	Yellow [output energized]
Housing Material	Polybutylene Terephthalate [PBT]
Sensing Face Material	Polybutylene Terephthalate [PBT]
Shock/Vibration	DIN EN 60947-5-2
Tightening Torque	NA
Weight	92g [3.25 oz]
Connectors	2m [6.5 ft] axial cable
Agency Approvals	cULus file E328811, CE, RoHS

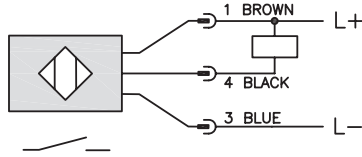
To obtain the most current agency approval information, see the Agency Approval Checklist section on the specific part number's web page.

CR Series Capacitive Proximity Sensors

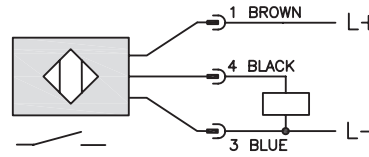
Wiring Diagrams

Diagram 1

NPN Output



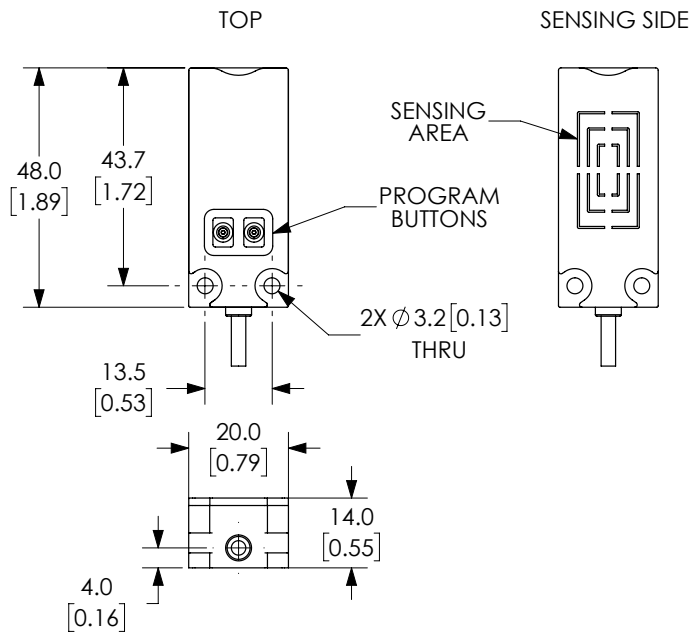
PNP Output



Dimensions

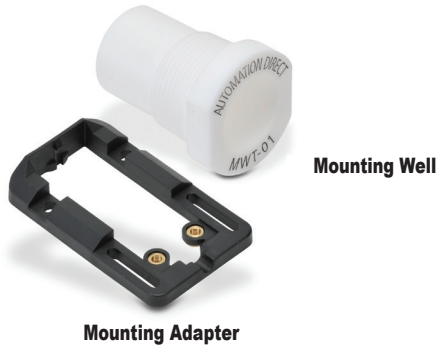
mm [inches]

Figure 1



See our website: www.AutomationDirect.com for complete engineering drawings

Capacitive Proximity Sensors - Accessories



Capacitive Proximity Sensors Accessory Chart				
Part Number	Price	Description	Material	Dimensions
Mounting Adapter				
CR1-ADPTR	\$4.50	Adapter for CR1 series capacitive sensors	Housing: Polybutylene Terephthalate (PBT) Included Screws: M3 x 6 Steel (0.5 N•m [0.37 lb•ft])	Figure 1
Mounting Wells				
MWT-01	\$52.00	30mm [1.18 in] sensor mounting well	PTFE - Polytetrafluoroethylene (Teflon®) Temp: -25 to 246°C [-13 to 474.8°F] Max. pressure: 100 PSI [6.9 bar]	Figure 2
MWK-01	\$42.50	18mm [0.71 in] sensor mounting well		Figure 3

Dimensions

mm [inches]

Figure 1

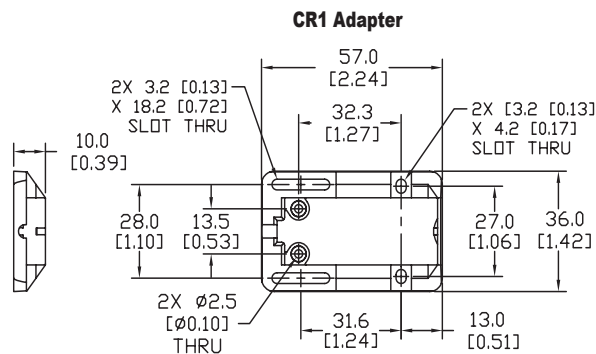


Figure 2

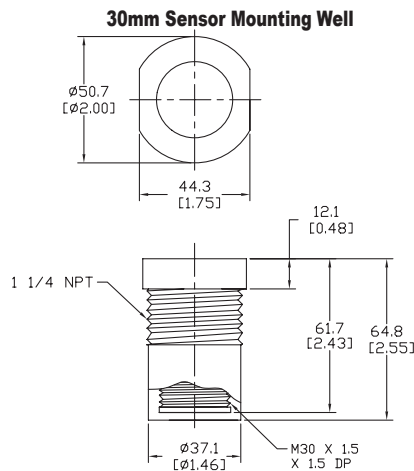
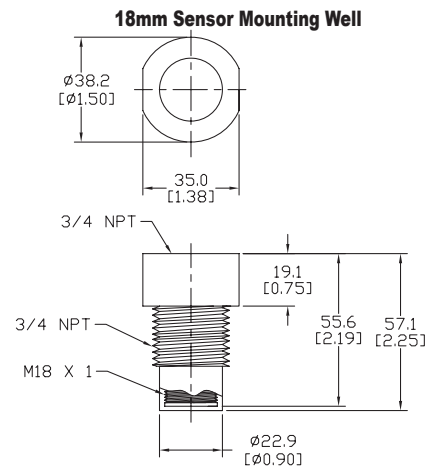


Figure 3



See our website: www.AutomationDirect.com for complete engineering drawings