



# DW Series M5 Stainless Steel Proximity Sensors

## Miniature M5 (5mm) stainless steel – DC



- Complete overload protection
- Factor 1 on steel and aluminum
- IP67 rated
- Stainless steel construction
- Full metal housing
- LED status indicator
- IO-Link versions available
- Lifetime warranty



### DW Series 5mm Extended Distance Inductive Proximity Selection Chart

Part Number	Price	Size	Sensing Range	Mounting	Output State	Logic	Connection	Wiring	Dimensions
<b>Extended Distance</b>									
<b>DW-AD-711-M5</b>	\$118.00	M5	3mm [0.118 in]	Non-flush	N.O.	NPN	2m [6.5 ft] axial cable	Diagram 1	Figure 1
<b>DW-AV-711-M5-276 *</b>	\$118.00						M8 with 0.2 m cable	Diagram 3	Figure 2
<b>DW-AD-713-M5</b>	\$118.00					PNP	2m [6.5 ft] axial cable	Diagram 2	Figure 1
<b>DW-AV-713-M5-276 *</b>	\$118.00						M8 with 0.2 m cable	Diagram 4	Figure 2

\* IO-Link model

## Wiring Diagrams

Diagram 1

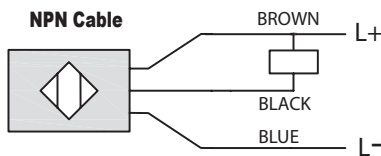
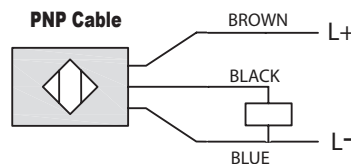


Diagram 2



Connectors

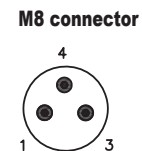


Diagram 3

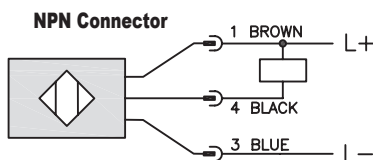
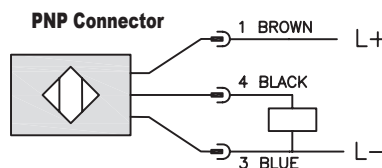


Diagram 4



# DW Series M5 Stainless Steel Proximity Sensors

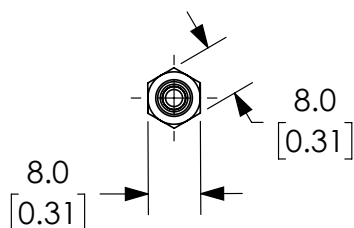
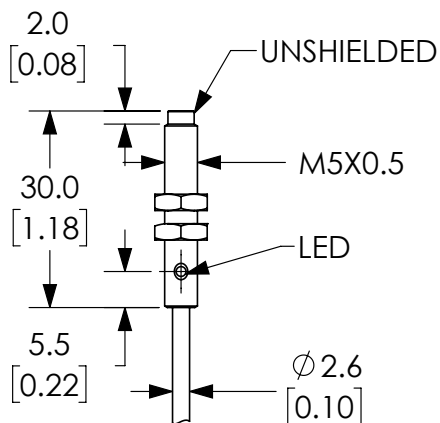
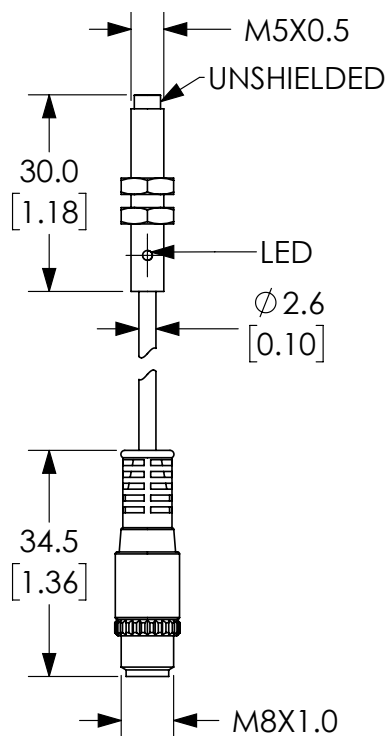
DW Series 5mm Extended Distance Inductive Proximity Specifications	
Specification	DW-Ax-71x-M5
Mounting Type	Non-flush
Nominal Sensing Distance	3mm [0.118 in]
Operating Distance	–
Material Correction Factors	See the <a href="#">Material influence table</a>
Output Type	NPN or PNP, N.O.
Operating Voltage	10 to 30 VDC
No-load Supply Current	≤ 10mA
Operating (Load) Current	≤ 200mA
Off-state (Leakage) Current	≤ 0.1 mA
Voltage Drop	≤ 2V
Switching Frequency	≤ 1200Hz
Differential Travel (% of Nominal Distance)	≤ 15%
Repeat Accuracy	0.15 mm
Ripple	≤ 20%
Time Delay Before Availability (tv)	≤ 30ms
Reverse Polarity Protection	Yes
Short-Circuit Protection	Yes
Operating Temperature	-25 to 85°C [-13 to 185°F]
Protection Degree (DIN 40050)	IP67
Indication/Switch Status	Yellow LED [LED on continuously - secured operating zone]
Housing Material	Stainless steel V2A
Sensing Face Material	Stainless steel V2A
Shock/Vibration	IEC 60947-5-2/7.4
Tightening Torque	1.5 N•m [13.3 lb•in]
Weight	30g [1.06 oz] with cable, 10g [0.35 oz] without cable
Connection	2m [6.5 ft] cable (PVC [polyvinyl chloride] 3 x 0.14mm <sup>2</sup> ≈ 26 AWG) or 0.2 m cable (PVC [polyvinyl chloride]) with M8 connection
Minimum Mounting Distance (center to center)	40.0 mm [1.57 in]
IO-Link	PNP/N.O. version only
Agency Approvals	CE, cULus E239373

To obtain the most current agency approval information, see the Agency Approval Checklist section on the specific part number's web page.

# DW Series M5 Stainless Steel Proximity Sensors

## Dimensions

mm [inches]

**Figure 1****Figure 2**See our website [www.AutomationDirect.com](http://www.AutomationDirect.com) for complete engineering drawings.

# Accessories for 5mm Sensors

## Right-angle Mounting Bracket

Mounting bracket, right-angle, plastic. For use with 5mm sensors.

Accessories for 5mm Sensors				
Part Number	Price	Description	Drawing Link	Weight [lb]
<a href="#">OPT2100</a>	\$8.00	Wenglor mounting bracket, right-angle, plastic. For use with 5mm sensors.	<a href="#">PDF</a>	0.02



[OPT2100](#)