



DW Series 30mm Stainless Steel Triple Sensing Proximity Sensors

M30 (30mm) Stainless Steel – DC



- 30mm threaded triple distance proximity sensor
- 40mm sensing
- Complete overload protection
- IP68/IP69k rated
- Two M30 lock nuts included
- Stainless steel construction
- One-piece for harsh duty applications
- LED status indicator
- Lifetime warranty



DW Series 30mm Stainless Steel Triple Sensing Inductive Proximity Selection Chart

Part Number	Price	Size	Sensing Range	Mounting	Output State	Logic	Connection	Wiring	Dimensions
Triple Distance (Non-flush)									
<u>DW-AD-711-M30</u>	\$131.00	M30	40mm [1.574 in]	Non-flush	N.O.	NPN	2m [6.5 ft] axial cable	Diagram 1	Figure 1
<u>DW-AD-713-M30*</u>	\$131.00				N.O.	PNP	2m [6.5 ft] axial cable	Diagram 2	Figure 1
<u>DW-AS-711-M30-002</u>	\$131.00				N.O.	NPN	M12 quick-disconnect	Diagram 3	Figure 2
<u>DW-AS-713-M30-002*</u>	\$131.00				N.O.	PNP	M12 quick-disconnect	Diagram 4	Figure 2
<u>DW-AS-714-M30-002</u>	\$131.00				N.C.	PNP	M12 quick-disconnect	Diagram 4	Figure 2

*IO-Link Model

Wiring Diagrams

Diagram 1

NPN Cable

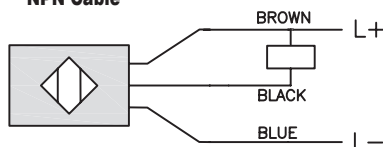
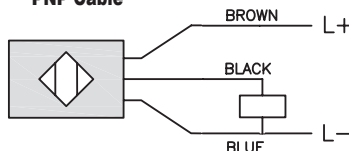


Diagram 2

PNP Cable



Connectors

M12 connector

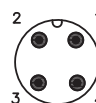


Diagram 3

NPN Connector

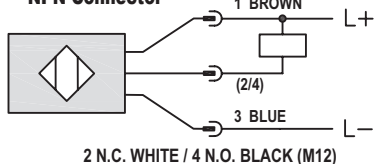
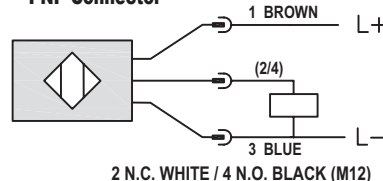


Diagram 4

PNP Connector



DW Series 30mm Stainless Steel Triple Sensing Proximity Sensors

DW Series 30mm Stainless Steel Triple Sensing Inductive Proximity Specifications

Mounting Type	Non-flush
Nominal Sensing Distance	40mm [1.574 in]
Operating Distance	NA
Material Correction Factors	See the Material influence table
Output Type	NPN or PNP, N.O. or N.C.
Operating Voltage	10 to 30 VDC
No-load Supply Current	≤ 10mA
Operating (Load) Current	≤ 200mA
Off-state (Leakage) Current	≤ 0.1 mA
Voltage Drop	≤ 2V
Switching Frequency	≤ 90 Hz
Differential Travel (% of Nominal Distance)	≤ 10%
Repeat Accuracy	2.0 mm
Ripple	≤ 20%
Time Delay Before Availability (tv)	≤ 40ms
Reverse Polarity Protection	Yes
Short-Circuit Protection	Yes
Operating Temperature	-25 to 85°C [-13 to 185°F]
Protection Degree (DIN 40050)	IP68/IP69K
Indication/Switch Status	Yellow LED
Housing Material	Stainless steel
Sensing Face Material	Stainless steel
Shock/Vibration	IEC 60947-5-2/7.4
Tightening Torque	--
Weight	196g [6.91 oz], 144g [5.08 oz]
Connection	2m [6.5 ft] cable, M12 connection
IO-Link	PNP/N.O. Version Only
Agency Approvals	CE, cULus E239373

To obtain the most current agency approval information, see the Agency Approval Checklist section on the specific part number's web page.

Dimensions

mm [inches]

Figure 1

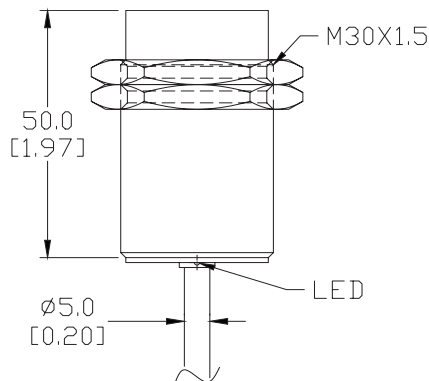
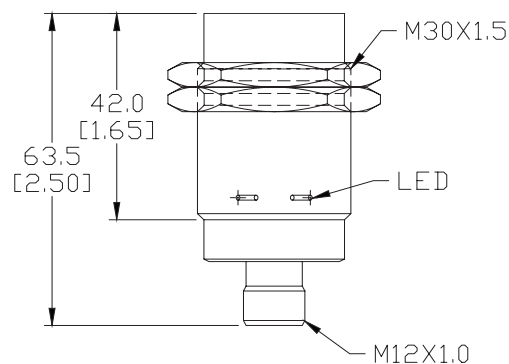


Figure 2



See our website: www.AutomationDirect.com for complete Engineering drawings.

Accessories for 30mm Sensors

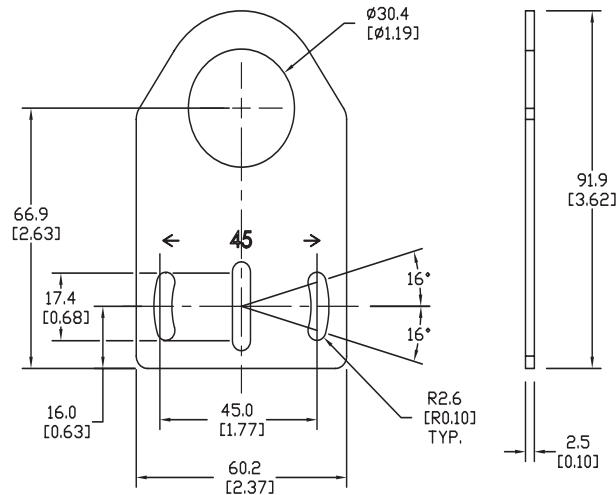
Axial Mounting Bracket

Mounting bracket, axial, zinc-plated steel. For use with 30mm sensors. Has two mounting holes (use 5mm screws) and allows the rotation of an optical axis for right-beam-angle-adaptor sensors. Hexagonal nuts not included.

Accessories for 30mm Sensors			
Part Number	Price	Description	Weight lb [g]
ST30A	\$2.25	Micro Detectors mounting bracket, axial, zinc plated steel. For use with 30mm sensors.	0.18 [81.7]

Dimensions

mm [inches]



ST30A

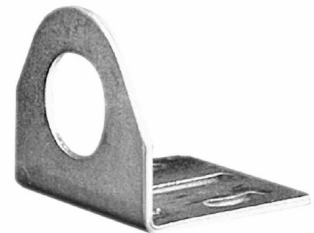
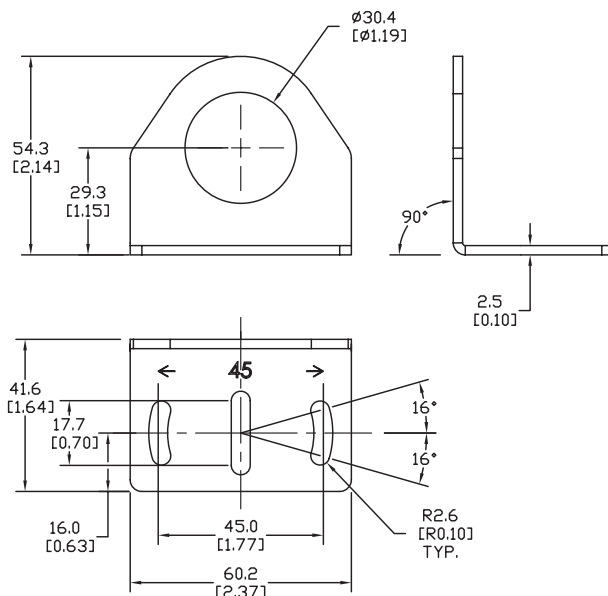
Right-angle Mounting Bracket

Mounting bracket, right-angle, zinc-plated steel. For use with 30mm sensors. Has two mounting holes (use 5mm screws) and allows the rotation of an optical axis for axial sensors. Hexagonal nuts not included.

Accessories for 30mm Sensors			
Part Number	Price	Description	Weight lb [g]
ST30C	\$2.25	Micro Detectors mounting bracket, right-angle, zinc plated steel. For use with 30mm sensors.	0.18 [81.7]

Dimensions

mm [inches]



ST30C

Accessories for 30mm Sensors

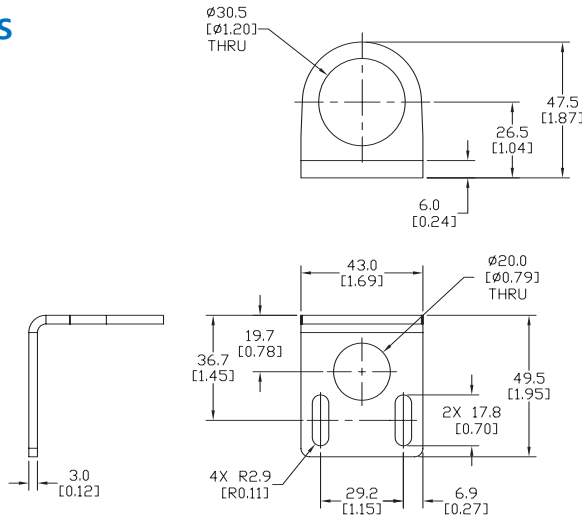
Right-angle Mounting Bracket

Mounting bracket, right-angle, 304 stainless steel. For use with 30mm sensors.

Accessories for FW Series Sensors			
Part Number	Price	Description	Weight lb [g]
<u>ST30C6W</u>	\$5.50	AutomationDirect mounting bracket, right-angle, 304 stainless steel. For use with 30mm sensors.	0.15 (68.0)

Dimensions

mm [inches]



[ST30C6W](#)

Right-angle Swivel Mounting Systems

Mounting bracket, right-angle swivel, 360 degree vertical and horizontal adjustment, 12mm rod mount. For use with 30mm sensors. Available in all 304 stainless steel or with an aluminum head with a 304 stainless steel mounting plate.

Accessories for 30mm Sensors						
Part Number	Price	Description	Mounting Head	Mounting Plate	Drawing Link	Weight lb [g]
<u>OPT2118</u>	\$11.50	Wenglor mounting bracket, right-angle swivel, 360 degree vertical and horizontal adjustment, aluminum, 12mm rod mount. For use with 30mm sensors.	Aluminum	304 Stainless steel	<u>PDF</u>	0.18 [81.7]
<u>OPT2119</u>	\$21.00	Wenglor mounting bracket, right-angle swivel, 360 degree vertical and horizontal adjustment, 304 stainless steel, 12mm rod mount. For use with 30mm sensors.	304 Stainless Steel	304 Stainless steel	<u>PDF</u>	0.18 [81.7]

Note: 304 Stainless steel mounting rods sold separately: [OPT2109](#) (200mm [7.87 in] length), [OPT2110](#) (300mm [11.81 in] length), and [OPT2111](#) (500mm [19.69 in] length).



[OPT2118](#), [OPT2119](#)

Mounting Rods and Brackets

Mounting Rods

304 Stainless steel rods for mounting swivel brackets [OPT2112](#) - [OPT2127](#). Available in three lengths: 200mm, 300mm, and 500mm. 12mm diameter.

Mounting Rods for OPT2112-2127 Swivel Mounting Brackets				
Part Number	Price	Description	Drawing Link	Weight lb (g)
OPT2109	\$13.00	Wenglor mounting rod, 12mm diameter, 200mm length, 304 stainless steel.	PDF	0.41 [185.97]
OPT2110	\$16.00	Wenglor mounting rod, 12mm diameter, 300mm length, 304 stainless steel.	PDF	0.60 [272.16]
OPT2111	\$21.00	Wenglor mounting rod, 12mm diameter, 500mm length, 304 stainless steel.	PDF	0.98 [444.52]



Right-angle Mounting Bracket

Mounting bracket, right-angle, nickel-plated brass. For use with 12mm mounting rods [OPT2109](#), [OPT2110](#) & [OPT2111](#).

Right-angle Mounting Brackets for 12mm Sensors				
Part Number	Price	Description	Drawing Link	Weight lb [g]
OPT2108	\$16.00	Wenglor mounting bracket, right-angle, nickel-plated brass. For use with 12mm mounting rods OPT2109, OPT2110 & OPT2111.	PDF	0.07 [31.8]

