



DW Series 30mm Stainless Steel Triple Sensing Proximity Sensors

M30 (30mm) Stainless Steel – DC



- 30mm threaded triple distance proximity sensor
- 40mm sensing
- Complete overload protection
- IP68/IP69k rated
- Two M30 lock nuts included
- Stainless steel construction
- One-piece for harsh duty applications
- LED status indicator
- Lifetime warranty



DW Series 30mm Stainless Steel Triple Sensing Inductive Proximity Selection Chart

Part Number	Price	Size	Sensing Range	Mounting	Output State	Logic	Connection	Wiring	Dimensions
Triple Distance (Non-flush)									
<u>DW-AD-711-M30</u>	\$131.00	M30	40mm [1.574 in]	Non-flush	N.O.	NPN	2m [6.5 ft] axial cable	Diagram 1	Figure 1
<u>DW-AD-713-M30*</u>	\$131.00				N.O.	PNP	2m [6.5 ft] axial cable	Diagram 2	Figure 1
<u>DW-AS-711-M30-002</u>	\$131.00				N.O.	NPN	M12 quick-disconnect	Diagram 3	Figure 2
<u>DW-AS-713-M30-002*</u>	\$131.00				N.O.	PNP	M12 quick-disconnect	Diagram 4	Figure 2
<u>DW-AS-714-M30-002</u>	\$131.00				N.C.	PNP	M12 quick-disconnect	Diagram 4	Figure 2

*IO-Link Model

Wiring Diagrams

Diagram 1

NPN Cable

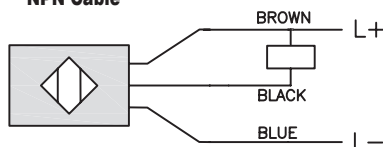
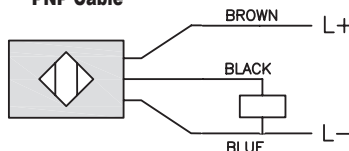


Diagram 2

PNP Cable



Connectors

M12 connector

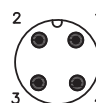
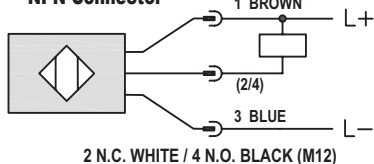


Diagram 3

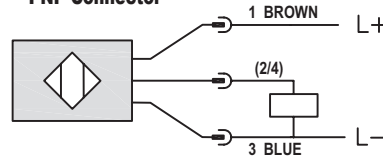
NPN Connector



2 N.C. WHITE / 4 N.O. BLACK (M12)

Diagram 4

PNP Connector



2 N.C. WHITE / 4 N.O. BLACK (M12)

DW Series 30mm Stainless Steel Triple Sensing Proximity Sensors

DW Series 30mm Stainless Steel Triple Sensing Inductive Proximity Specifications

Mounting Type	Non-flush
Nominal Sensing Distance	40mm [1.574 in]
Operating Distance	NA
Material Correction Factors	See the Material influence table
Output Type	NPN or PNP, N.O. or N.C.
Operating Voltage	10 to 30 VDC
No-load Supply Current	≤ 10mA
Operating (Load) Current	≤ 200mA
Off-state (Leakage) Current	≤ 0.1 mA
Voltage Drop	≤ 2V
Switching Frequency	≤ 90 Hz
Differential Travel (% of Nominal Distance)	≤ 10%
Repeat Accuracy	2.0 mm
Ripple	≤ 20%
Time Delay Before Availability (tv)	≤ 40ms
Reverse Polarity Protection	Yes
Short-Circuit Protection	Yes
Operating Temperature	-25 to 85°C [-13 to 185°F]
Protection Degree (DIN 40050)	IP68/IP69K
Indication/Switch Status	Yellow LED
Housing Material	Stainless steel
Sensing Face Material	Stainless steel
Shock/Vibration	IEC 60947-5-2/7.4
Tightening Torque	--
Weight	196g [6.91 oz], 144g [5.08 oz]
Connection	2m [6.5 ft] cable, M12 connection
IO-Link	PNP/N.O. Version Only
Agency Approvals	CE, cULus E239373

To obtain the most current agency approval information, see the Agency Approval Checklist section on the specific part number's web page.

Dimensions

mm [inches]

Figure 1

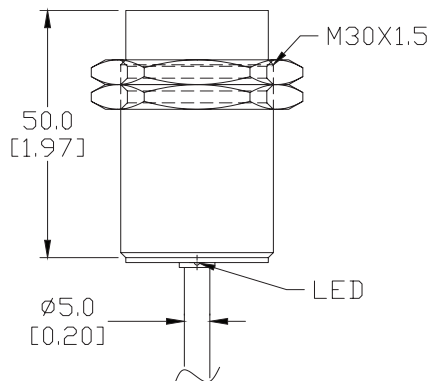
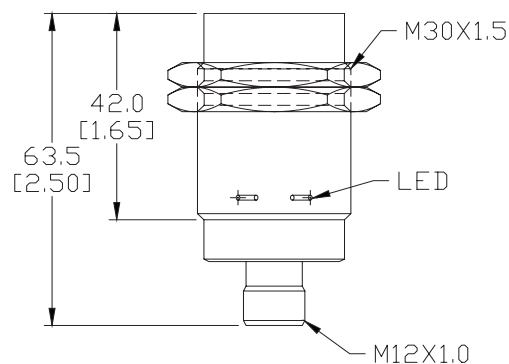


Figure 2

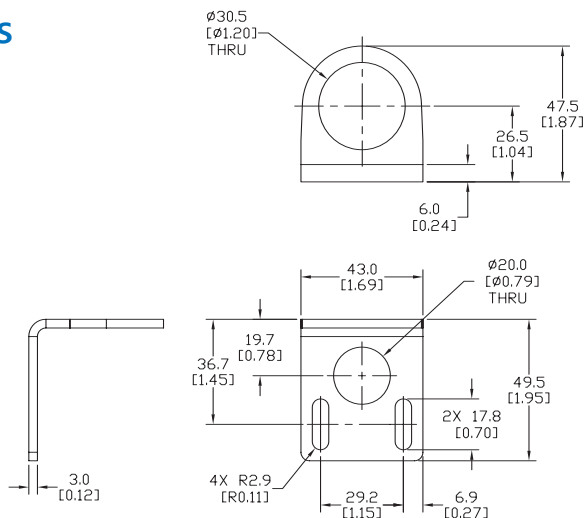


See our website: www.AutomationDirect.com for complete Engineering drawings.

Right-angle Mounting Bracket

Accessories for FW Series Sensors			
Part Number	Price	Description	Weight lb [g]
<u>ST30C6W</u>	\$5.50	AutomationDirect mounting bracket, right-angle, 304 stainless steel. For use with 30mm sensors.	0.15 (68.0)

mm [inches]



ST30C6W

Right-angle Swivel Mounting Systems

Mounting bracket, right-angle swivel, 360 degree vertical and horizontal adjustment, 12mm rod mount. For use with 30mm sensors. Available in all 304 stainless steel or with an aluminum head with a 304 stainless steel mounting plate.

Accessories for 30mm Sensors						
Part Number	Price	Description	Mounting Head	Mounting Plate	Drawing Link	Weight lb [g]
<u>OPT2118</u>	\$11.50	Wenglor mounting bracket, right-angle swivel, 360 degree vertical and horizontal adjustment, aluminum, 12mm rod mount. For use with 30mm sensors.	Aluminum	304 Stainless steel	<u>PDF</u>	0.18 [81.7]
<u>OPT2119</u>	\$21.00	Wenglor mounting bracket, right-angle swivel, 360 degree vertical and horizontal adjustment, 304 stainless steel, 12mm rod mount. For use with 30mm sensors.	304 Stainless Steel	304 Stainless steel	<u>PDF</u>	0.18 [81.7]

Note: 304 Stainless steel mounting rods sold separately: [OPT2109](#) (200mm [7.87 in] length), [OPT2110](#) (300mm [11.81 in] length), and [OPT2111](#) (500mm [19.69 in] length).



OPT2118, OPT2119

Mounting Rods and Brackets

Mounting Rods

304 Stainless steel rods for mounting swivel brackets [OPT2112](#) - [OPT2127](#). Available in three lengths: 200mm, 300mm, and 500mm. 12mm diameter.

Mounting Rods for OPT2112-2127 Swivel Mounting Brackets				
Part Number	Price	Description	Drawing Link	Weight lb (g)
OPT2109	\$13.00	Wenglor mounting rod, 12mm diameter, 200mm length, 304 stainless steel.	PDF	0.41 [185.97]
OPT2110	\$16.00	Wenglor mounting rod, 12mm diameter, 300mm length, 304 stainless steel.	PDF	0.60 [272.16]
OPT2111	\$21.00	Wenglor mounting rod, 12mm diameter, 500mm length, 304 stainless steel.	PDF	0.98 [444.52]



Right-angle Mounting Bracket

Mounting bracket, right-angle, nickel-plated brass. For use with 12mm mounting rods [OPT2109](#), [OPT2110](#) & [OPT2111](#).

Right-angle Mounting Brackets for 12mm Sensors				
Part Number	Price	Description	Drawing Link	Weight lb [g]
OPT2108	\$16.00	Wenglor mounting bracket, right-angle, nickel-plated brass. For use with 12mm mounting rods OPT2109, OPT2110 & OPT2111.	PDF	0.07 [31.8]

