

CT Series Capacitive Proximity Sensors



M30 (30mm) Plastic – AC/DC

- Plastic Housing
- Push button teach
- N.O./N.C. selectable
- IP65/IP67 rated
- LED status indicators
- 1/2 inch Micro AC quick-disconnect; purchase cable separately
- Mounting accessories available



CT Series Capacitive Prox Selection Chart

Part Number	Price	Sensing Distance	Mounting	Output State	Logic	Connection	Wiring	Dimensions
CTV-00-2M	\$112.00	40mm [1.58 in]	Non-flush	N.O./N.C.	-	1/2 inch micro AC quick-disconnect	Diagram 1	Figure 1

CT Series Specifications

Part Number	CTV-00-2M
Mounting Type	Non-flush
Nominal Sensing Distance	40mm [1.58 in]
Sensitivity	Push to teach
Operating Distance	NA
Material Correction Factors	NA
Output Type	AC/DC; N.O./N.C.
Operating Voltage	20 to 250VDC; 30 to 250VAC
No-load Supply Current	NA
Operating (Load) Current	150mA [40°C]/100mA [80°C] continuous; 1.0 A [20ms/ 0.5 Hz] peak
Off-state (Leakage) Current	< 2.5mA (250VAC) < 1.7mA (110VAC) < 1.5mA (24VDC)
Voltage Drop	< 8VDC/ <10VAC
Switching Frequency	10Hz
Differential Travel (% of Nominal Distance)	NA
Repeat Accuracy	
Ripple	
Time Delay Before Availability (tv)	Yes
Reverse Polarity Protection	
Short-circuit Protection	No
Operating Temperature	-25 to 80°C [-13 to 176°F]; Sensing face: -25 to 110°C [-13 to 230°F]
Protection Degree (DIN 40050)	IEC IP65/IP67
Indication/Switch Status	Yellow [output energized]
Housing Material	Polybutylene Terephthalate [PBT]
Sensing Face Material	Polybutylene Terephthalate [PBT]
Shock/Vibration	DIN EN 60947-5-2
Tightening Torque	8.0 N•m [5.9 lb•ft]
Weight	122g [4.30 oz]
Connectors	0.5 in [12.7 mm] micro AC connector, 2 lock nuts included
Agency Approvals	cULus file E328811, CE, RoHS

To obtain the most current agency approval information, see the Agency Approval Checklist section on the specific part number's web page.

Capacitive Proximity Sensors - Accessories



Mounting Well

Mounting Adapter

Capacitive Proximity Sensors Accessory Chart				
Part Number	Price	Description	Material	Dimensions
Mounting Adapter				
CR1-ADPTR	\$4.50	Adapter for CR1 series capacitive sensors	Housing: Polybutylene Terephthalate (PBT) Included Screws: M3 x 6 Steel (0.5 N•m [0.37 lb•ft])	Figure 1
Mounting Wells				
MWT-01	\$52.00	30mm [1.18 in] sensor mounting well	PTFE - Polytetrafluoroethylene (Teflon®) Temp: -25 to 246°C [-13 to 474.8°F] Max. pressure: 100 PSI [6.9 bar]	Figure 2
MWK-01	\$42.50	18mm [0.71 in] sensor mounting well		Figure 3

Dimensions

mm [inches]

Figure 1

CR1 Adapter

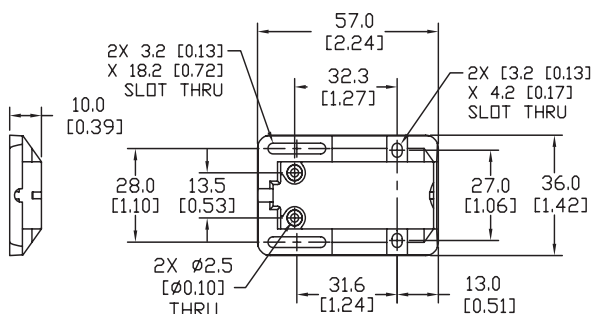


Figure 2

30mm Sensor Mounting Well

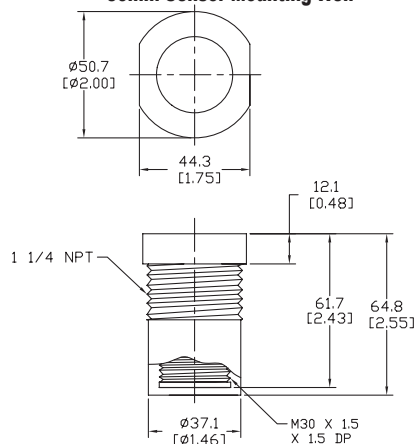
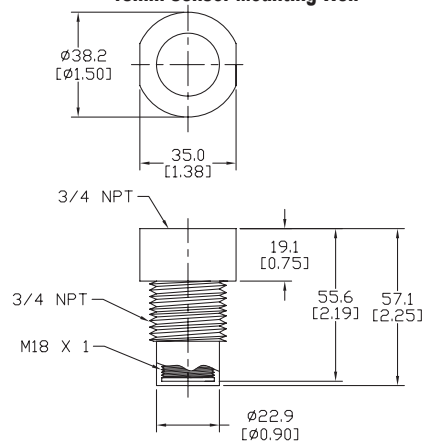


Figure 3

18mm Sensor Mounting Well

See our website: www.AutomationDirect.com for complete engineering drawings

Accessories for 30mm Sensors

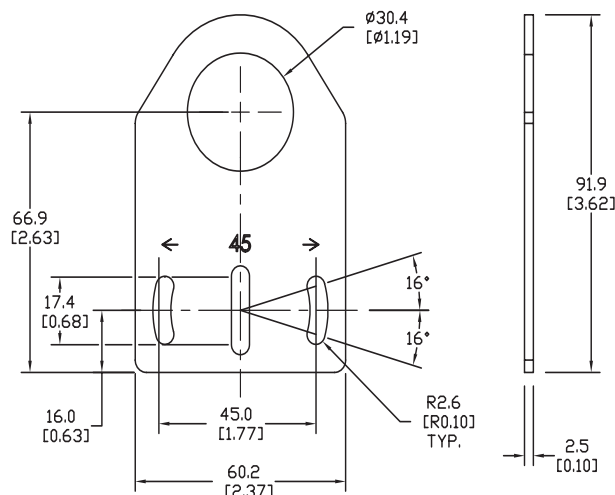
Axial Mounting Bracket

Mounting bracket, axial, zinc-plated steel. For use with 30mm sensors. Has two mounting holes (use 5mm screws) and allows the rotation of an optical axis for right-beam-angle-adaptor sensors. Hexagonal nuts not included.

Accessories for 30mm Sensors			
Part Number	Price	Description	Weight lb [g]
ST30A	\$2.25	Micro Detectors mounting bracket, axial, zinc plated steel. For use with 30mm sensors.	0.18 [81.7]

Dimensions

mm [inches]



ST30A

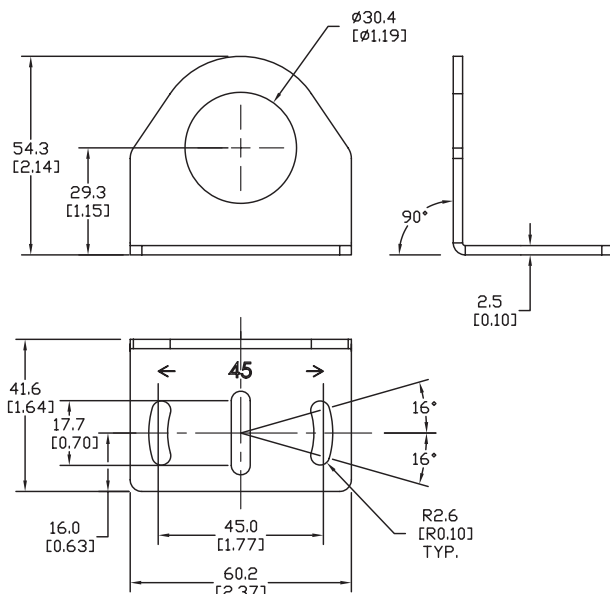
Right-angle Mounting Bracket

Mounting bracket, right-angle, zinc-plated steel. For use with 30mm sensors. Has two mounting holes (use 5mm screws) and allows the rotation of an optical axis for axial sensors. Hexagonal nuts not included.

Accessories for 30mm Sensors			
Part Number	Price	Description	Weight lb [g]
ST30C	\$2.25	Micro Detectors mounting bracket, right-angle, zinc plated steel. For use with 30mm sensors.	0.18 [81.7]

Dimensions

mm [inches]



ST30C

Accessories for 30mm Sensors

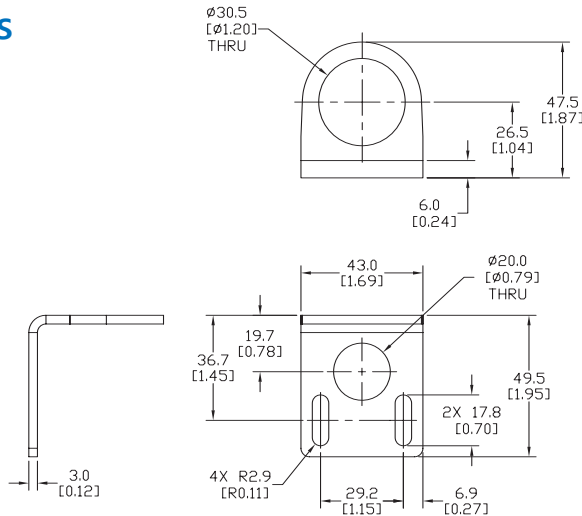
Right-angle Mounting Bracket

Mounting bracket, right-angle, 304 stainless steel. For use with 30mm sensors.

Accessories for FW Series Sensors			
Part Number	Price	Description	Weight lb [g]
<u>ST30C6W</u>	\$5.50	AutomationDirect mounting bracket, right-angle, 304 stainless steel. For use with 30mm sensors.	0.15 (68.0)

Dimensions

mm [inches]



[ST30C6W](#)

Right-angle Swivel Mounting Systems

Mounting bracket, right-angle swivel, 360 degree vertical and horizontal adjustment, 12mm rod mount. For use with 30mm sensors. Available in all 304 stainless steel or with an aluminum head with a 304 stainless steel mounting plate.

Accessories for 30mm Sensors						
Part Number	Price	Description	Mounting Head	Mounting Plate	Drawing Link	Weight lb [g]
<u>OPT2118</u>	\$11.50	Wenglor mounting bracket, right-angle swivel, 360 degree vertical and horizontal adjustment, aluminum, 12mm rod mount. For use with 30mm sensors.	Aluminum	304 Stainless steel	<u>PDF</u>	0.18 [81.7]
<u>OPT2119</u>	\$21.00	Wenglor mounting bracket, right-angle swivel, 360 degree vertical and horizontal adjustment, 304 stainless steel, 12mm rod mount. For use with 30mm sensors.	304 Stainless Steel	304 Stainless steel	<u>PDF</u>	0.18 [81.7]

Note: 304 Stainless steel mounting rods sold separately: [OPT2109](#) (200mm [7.87 in] length), [OPT2110](#) (300mm [11.81 in] length), and [OPT2111](#) (500mm [19.69 in] length).



[OPT2118, OPT2119](#)

Mounting Rods and Brackets

Mounting Rods

304 Stainless steel rods for mounting swivel brackets [OPT2112](#) - [OPT2127](#). Available in three lengths: 200mm, 300mm, and 500mm. 12mm diameter.

Mounting Rods for OPT2112-2127 Swivel Mounting Brackets				
Part Number	Price	Description	Drawing Link	Weight lb (g)
OPT2109	\$13.00	Wenglor mounting rod, 12mm diameter, 200mm length, 304 stainless steel.	PDF	0.41 [185.97]
OPT2110	\$16.00	Wenglor mounting rod, 12mm diameter, 300mm length, 304 stainless steel.	PDF	0.60 [272.16]
OPT2111	\$21.00	Wenglor mounting rod, 12mm diameter, 500mm length, 304 stainless steel.	PDF	0.98 [444.52]



Right-angle Mounting Bracket

Mounting bracket, right-angle, nickel-plated brass. For use with 12mm mounting rods [OPT2109](#), [OPT2110](#) & [OPT2111](#).

Right-angle Mounting Brackets for 12mm Sensors				
Part Number	Price	Description	Drawing Link	Weight lb [g]
OPT2108	\$16.00	Wenglor mounting bracket, right-angle, nickel-plated brass. For use with 12mm mounting rods OPT2109, OPT2110 & OPT2111.	PDF	0.07 [31.8]

