

CK Series Capacitive Proximity Sensors

M18 (18mm) plastic – DC



Pushbutton models

- N.O./N.C. selectable
- Pushbutton teach
- LED status indicators
- IP65/IP67 rated
- M12 quick-disconnect; purchase cable separately
- Mounting accessories available

Potentiometer models

- N.O. or N.C. units available
- Potentiometer sensitivity adjustment
- LED status indicators
- IP65/IP67/IP69K rated
- M12 quick-disconnect; purchase cable separately
- Mounting accessories available



CK Series Capacitive Proximity Selection Chart

Part Number	Price	Sensing Distance	Mounting	Output State	Logic	Connection	Wiring	Dimensions
Pushbutton select and teach								
CK1-00-2H	\$96.00	12mm [0.47 in]	Non-flush	N.O./N.C.	NPN/PNP	M12 [12mm] quick-disconnect	Diagram 1	Figure 1
Potentiometer sensitivity adjustment								
CK2-AP-1H	\$66.00	8mm [0.32 in]	Flush	N.O.	PNP	M12 [12mm] quick-disconnect	Diagram 1 (PNP)	Figure 2
CK2-CP-1H	\$66.00	8mm [0.32 in]	Flush	N.C.	PNP	M12 [12mm] quick-disconnect	Diagram 1 (PNP)	Figure 2
CK2-AP-2H	\$66.00	15mm [0.59 in]	Non-flush	N.O.	PNP	M12 [12mm] quick-disconnect	Diagram 1 (PNP)	Figure 2
CK2-CP-2H	\$66.00	15mm [0.59 in]	Non-flush	N.C.	PNP	M12 [12mm] quick-disconnect	Diagram 1 (PNP)	Figure 2

CK Series Capacitive Proximity Specifications

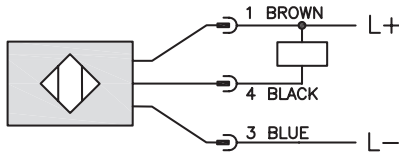
Part Number	CK1-00-2H	CK2-XX-XX	CK2-XX-XX
Mounting Type	Non-flush	Non-flush	Flush
Nominal Sensing Distance	12mm [0.47 in]	15mm [0.59 in]	8mm [0.32 in]
Operating Distance	NA		
Material Correction Factors	NA		
Output Type	NPN/PNP; N.O./N.C.		PNP; N.O./N.C.
Operating Voltage	10 to 36VDC		10 to 30VDC
No-load Supply Current	< 20mA		< 22mA
Operating (Load) Current	200mA		
Off-state (Leakage) Current	NA		
Voltage Drop	< 2.5V		
Switching Frequency	10Hz	30Hz	
Differential Travel (% of Nominal Distance)	NA		
Repeat Accuracy	NA		
Ripple	NA		
Time Delay Before Availability (tv)	NA		
Reverse Polarity Protection	Yes		
Short-circuit Protection	Yes, pulsed		
Operating Temperature	-25 to 80°C [-13 to 176°F] Sensing face: -25° to 110°C [-13° to 230°F]		
Protection Degree (DIN 40050)	IEC IP65/IP67	IEC IP65/IP67/IP69K	
Indication/Switch Status	Yellow [output energized]		
Housing Material	Polybutylene Terephthalate [PBT]		
Sensing Face Material	Polybutylene Terephthalate [PBT]		
Shock/Vibration	DIN EN 60947-5-2		
Tightening Torque	2.0 N•m [1.48 lb•ft]		
Weight	59g [2.08 oz]	26.1 g [0.92 oz]	
Connectors	M12 connector. 2 lock nuts included		
Agency Approvals	cULus file E328811, CE		

To obtain the most current agency approval information, see the Agency Approval Checklist section on the specific part number's web page.

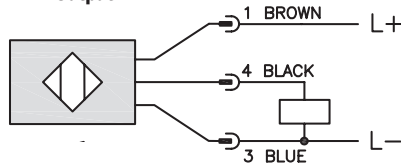
CK Series Capacitive Proximity Sensors

Wiring Diagrams

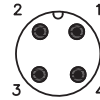
Diagram 1
NPN Output



PNP Output



Connectors
M12 connector



Dimensions

mm [inches]

Figure 1

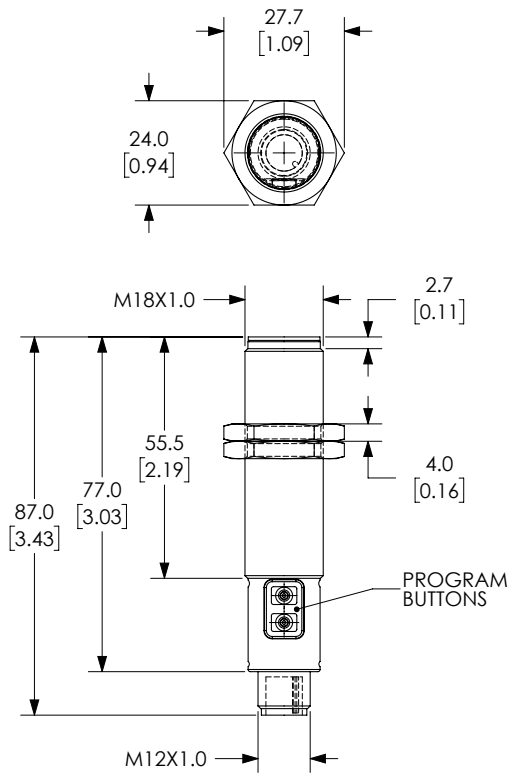
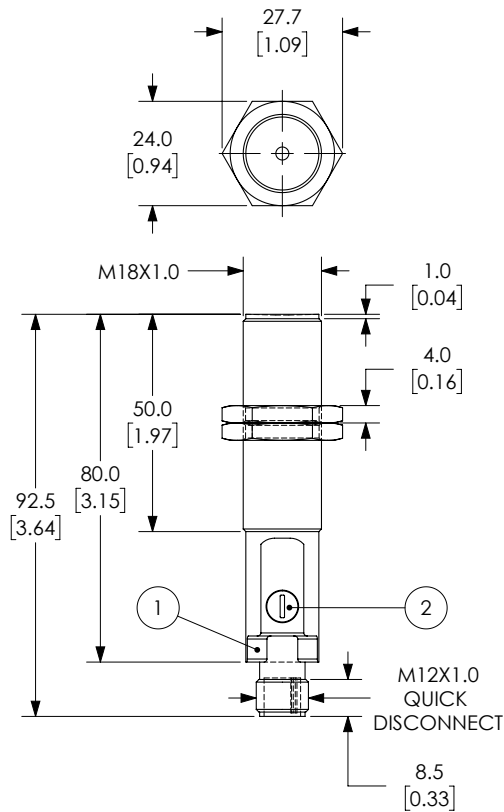


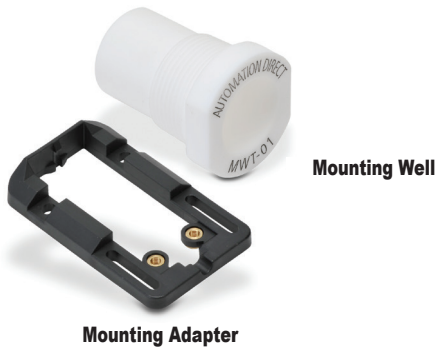
Figure 2



1 = LED YELLOW SWITCHING STATUS
2 = POTENTIOMETER SENSING RANGE

See our website: www.AutomationDirect.com for complete engineering drawings

Capacitive Proximity Sensors - Accessories



Capacitive Proximity Sensors Accessory Chart				
Part Number	Price	Description	Material	Dimensions
Mounting Adapter				
CR1-ADPTR	\$4.50	Adapter for CR1 series capacitive sensors	Housing: Polybutylene Terephthalate (PBT) Included Screws: M3 x 6 Steel (0.5 N•m [0.37 lb•ft])	Figure 1
Mounting Wells				
MWT-01	\$52.00	30mm [1.18 in] sensor mounting well	PTFE - Polytetrafluoroethylene (Teflon®) Temp: -25 to 246°C [-13 to 474.8°F] Max. pressure: 100 PSI [6.9 bar]	Figure 2
MWK-01	\$42.50	18mm [0.71 in] sensor mounting well		Figure 3

Dimensions

mm [inches]

Figure 1

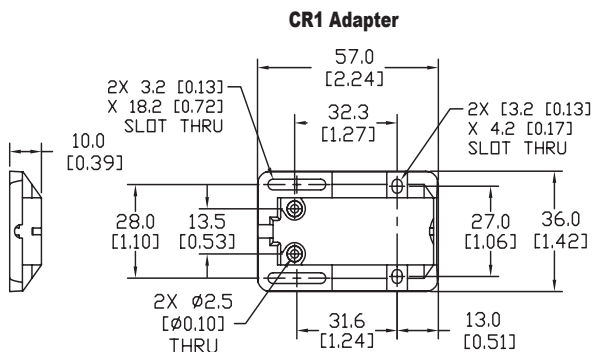


Figure 2

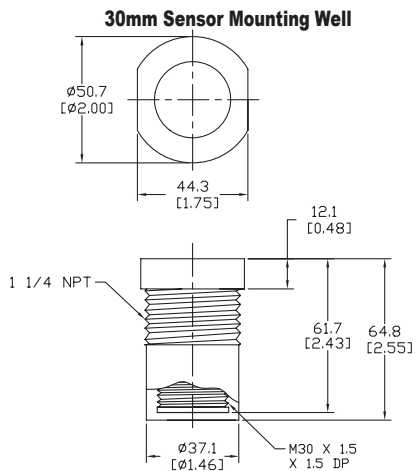
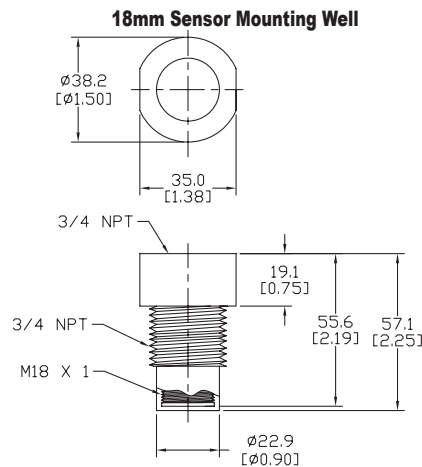


Figure 3



See our website: www.AutomationDirect.com for complete engineering drawings

Accessories for 18mm Sensors

Axial Mounting Bracket

Axial mounting bracket available in zinc plated steel or 316L stainless steel. Has two mounting holes (use 4mm screws) and allows for rotation of an optical axis for right-beam-angle-adaptor sensors. Hexagonal nuts not included. For use with 18mm sensors.

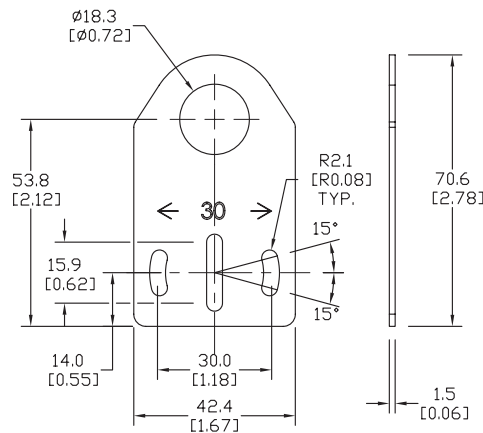


ST18A

Accessories for 18mm Sensors			
Part Number	Price	Description	Weight lb [g]
ST18A	\$2.00	Micro Detectors mounting bracket, axial, zinc plated steel. For use with 18mm sensors.	0.06 [27.2]
ST18A7W	\$7.25	Micro Detectors mounting bracket, axial, 316L stainless steel. For use with 18mm sensors.	0.06 [27.2]

Dimensions

mm [inches]



Right-angle Mounting Bracket

Right-angle mounting bracket for use with 18mm sensors. Has two mounting holes (use 4mm screws) and allows the rotation of an optical axis for axial sensors. Hexagonal nuts not included.

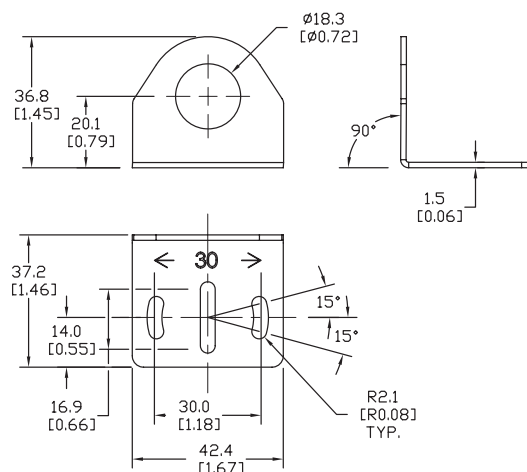


ST18C

Accessories for 18mm Sensors			
Part Number	Price	Description	Weight lb [g]
ST18C	\$2.00	Micro Detectors mounting bracket, right-angle, zinc plated steel. For use with 18mm sensors.	0.06 [27.2]
ST18C7W	\$7.25	Micro Detectors mounting bracket, right-angle, 316L stainless steel. For use with 18mm sensors.	0.06 [27.2]

Dimensions

mm [inches]



Accessories for 18mm Sensors

Right-angle Mounting Brackets

Mounting bracket, right-angle, fixed insertion stop adjustment, plastic. For use with 18mm sensors. Available with or without fixed insertion stop.

Accessories for 18mm Sensors				
Part Number	Price	Description	Drawing Link	Weight lb [g]
OPT2104	\$10.50	Wenglor mounting bracket, right-angle, fixed insertion stop adjustment, plastic. For use with 18mm sensors.	PDF	0.06 [27.2]
OPT2105	\$10.50	Wenglor mounting bracket, right-angle, plastic. For use with 18mm sensors.	PDF	0.06 [27.2]



[OPT2104](#), [OPT2105](#)

Right-angle Swivel Mounting Systems

Mounting bracket, right-angle swivel, 360 degree vertical and horizontal adjustment, 12mm rod mount. For use with 18mm sensors. Available in all 304 stainless steel or with an aluminum head and a stainless steel mounting plate.

Accessories for 18mm Sensors						
Part Number	Price	Description	Mounting Head	Mounting Plate	Drawing Link	Weight lb [g]
OPT2116	\$11.50	Wenglor mounting bracket, right-angle swivel, 360 degree vertical and horizontal adjustment, aluminum, 12mm rod mount. For use with 18mm sensors.	Aluminum	304 Stainless steel	PDF	0.15 [68.0]
OPT2117	\$21.00	Wenglor mounting bracket, right-angle swivel, 360 degree vertical and horizontal adjustment, 304 stainless steel, 12mm rod mount. For use with 18mm sensors.	304 Stainless steel	304 Stainless steel	PDF	0.28 [127.0]



[OPT2116](#), [OPT2117](#)

Note: 304 Stainless steel mounting rods sold separately: [OPT2109](#) (200mm [7.87 in] length), [OPT2110](#) (300mm [11.81 in] length), and [OPT2111](#) (500mm [19.69 in] length).

Mounting Rods and Brackets

Mounting Rods

304 Stainless steel rods for mounting swivel brackets [OPT2112](#) - [OPT2127](#). Available in three lengths: 200mm, 300mm, and 500mm. 12mm diameter.

Mounting Rods for OPT2112-2127 Swivel Mounting Brackets				
Part Number	Price	Description	Drawing Link	Weight lb (g)
OPT2109	\$13.00	Wenglor mounting rod, 12mm diameter, 200mm length, 304 stainless steel.	PDF	0.41 [185.97]
OPT2110	\$16.00	Wenglor mounting rod, 12mm diameter, 300mm length, 304 stainless steel.	PDF	0.60 [272.16]
OPT2111	\$21.00	Wenglor mounting rod, 12mm diameter, 500mm length, 304 stainless steel.	PDF	0.98 [444.52]



Right-angle Mounting Bracket

Mounting bracket, right-angle, nickel-plated brass. For use with 12mm mounting rods [OPT2109](#), [OPT2110](#) & [OPT2111](#).

Right-angle Mounting Brackets for 12mm Sensors				
Part Number	Price	Description	Drawing Link	Weight lb [g]
OPT2108	\$16.00	Wenglor mounting bracket, right-angle, nickel-plated brass. For use with 12mm mounting rods OPT2109 , OPT2110 & OPT2111 .	PDF	0.07 [31.8]

