

# Precision Ground Linear Shafts

## 1060 Steel and 440C Stainless Steel



### Features

- C1060 steel
- RC60-65 Hardness
- 10RMS Surface Finish
- Tolerance: Class L  
 $\pm 1/32"$  length tolerance  
 $+ 0.0000" / - 0.0005"$  diameter tolerance



### Features

- 440C Stainless steel
- RC50-55 Hardness
- 10RMS Surface Finish
- Tolerance: Class L  
 $\pm 1/32"$  length tolerance  
 $+ 0.0000" / - 0.0005"$  diameter tolerance



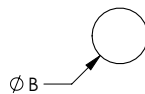
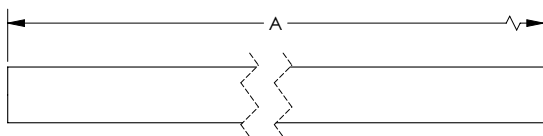
Linear Shafts - 1060 Steel				
Part Number	A	ØB	Price	Weight (lb)
<a href="#"><u>LPCS08-12</u></a>	12.0	0.50	Retired	0.71
<a href="#"><u>LPCS08-24</u></a>	24.0	0.50	Retired	2.41
<a href="#"><u>LPCS08-36</u></a>	36.0	0.50	Retired	3.41
<a href="#"><u>LPCS12-12</u></a>	12.0	0.75	Retired	1.52
<a href="#"><u>LPCS12-24</u></a>	24.0	0.75	Retired	4.03
<a href="#"><u>LPCS12-36</u></a>	36.0	0.75	Retired	5.84
<a href="#"><u>LPCS16-12</u></a>	12.0	1.0	Retired	2.71
<a href="#"><u>LPCS16-24</u></a>	24.0	1.0	Retired	6.41
<a href="#"><u>LPCS16-36</u></a>	36.0	1.0	Retired	9.41

Note: All measurements in inches

Linear Shafts - 440C Stainless Steel				
Part Number	A	ØB	Price	Weight (lb)
<a href="#"><u>LPSS08-12</u></a>	12.0	0.50	Retired	0.71
<a href="#"><u>LPSS08-24</u></a>	24.0	0.50	Retired	2.41
<a href="#"><u>LPSS08-36</u></a>	36.0	0.50	Retired	3.41
<a href="#"><u>LPSS12-12</u></a>	12.0	0.75	Retired	1.52
<a href="#"><u>LPSS12-24</u></a>	24.0	0.75	Retired	4.03
<a href="#"><u>LPSS12-36</u></a>	36.0	0.75	Retired	5.84
<a href="#"><u>LPSS16-12</u></a>	12.0	1.0	Retired	2.71
<a href="#"><u>LPSS16-24</u></a>	24.0	1.0	Retired	6.41
<a href="#"><u>LPSS16-36</u></a>	36.0	1.0	Retired	9.41

Note: All measurements in inches

### Dimensions



See our website [www.AutomationDirect.com](http://www.AutomationDirect.com) for complete Engineering drawings.