



# Pneumatic Manual Valves

## Pneumatic Metal Plunger Valves with one-way metal roller

### Features

- These valves function as pneumatic limit switches
- Available in normally closed
- 5/32" [4mm] push-to-connect ports located on side or end



Valve Symbol

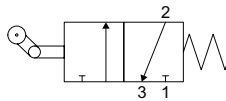


Diagram "E"

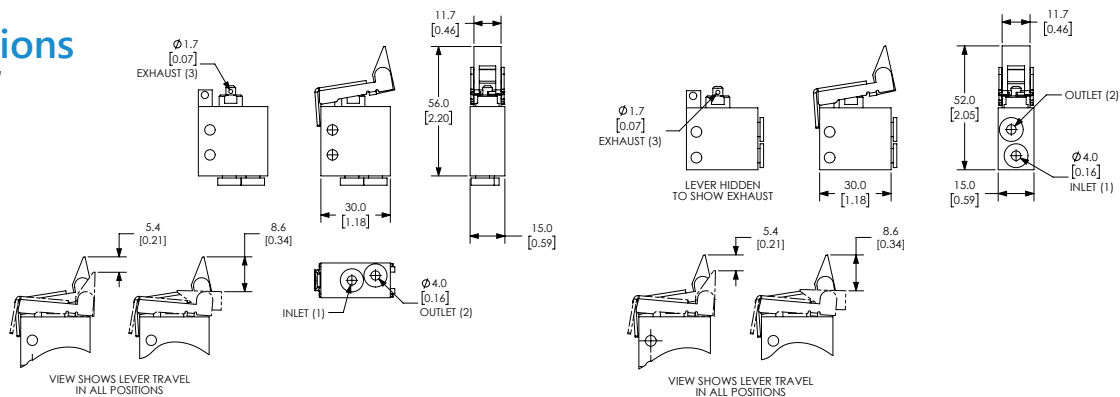
**EVP-CA-T**



**EVP-CS-T**

Specifications		
Models	<i>EVP-CA-T</i>	<i>EVP-CS-T</i>
Price	\$26.50	\$24.50
Weight (lbs)	0.1	0.1
Valve Type	2-port (3-way) 2-position	
Acting	Metal plunger with one-way metal roller, normally closed, spring return	Metal plunger with one-way metal roller, normally closed, spring return
Diagram	E	E
Port Size	Axial ports 5/32in (4mm)	Side ports 5/32in (4mm)
Flow (Cv)	0.13	0.13
Fluid	Air (to be filtered by 40µ filter element)	
Min. / Max. Pressure	7.25 to 145 psi (0.5 to 10 bar)	
Temperature	14°F to 140°F (-10°C to 60°C)	
Lubrication	Not Required	
Body	Aluminum	
Protection	IP65	

### Dimensions mm [inches]



**EVP-CA-T**

**EVP-CS-T**

See our website [www.AutomationDirect.com](http://www.AutomationDirect.com) for complete Engineering drawings.