



# Pneumatic Pushbuttons, 22mm

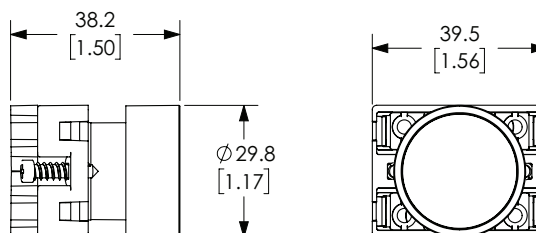
## Momentary flush pushbuttons with protective plastic ring (30mm diameter actuator)



**ECP3100**

Part Number	Color	Description	Weight (lbs)	Price
<a href="#">ECP3100</a>	Black	NITRA pneumatic pushbutton, IP65, 22mm, momentary, plastic base, plastic bezel, black, operator only, Operator: black, flush, 30mm, round, plastic.	0.07	\$2.75
<a href="#">ECP3101</a>	Red	NITRA pneumatic pushbutton, IP65, 22mm, momentary, plastic base, plastic bezel, black, operator only, Operator: red, flush, 30mm, round, plastic.	0.07	\$2.75
<a href="#">ECP3102</a>	Green	NITRA pneumatic pushbutton, IP65, 22mm, momentary, plastic base, plastic bezel, black, operator only, Operator: green, flush, 30mm, round, plastic.	0.07	\$2.75
<a href="#">ECP3103</a>	Yellow	NITRA pneumatic pushbutton, IP65, 22mm, momentary, plastic base, plastic bezel, black, operator only, Operator: yellow, flush, 30mm, round, plastic.	0.07	\$2.75
<a href="#">ECP3104</a>	Blue	NITRA pneumatic pushbutton, IP65, 22mm, momentary, plastic base, plastic bezel, black, operator only, Operator: blue, flush, 30mm, round, plastic.	0.07	\$2.75
<a href="#">ECP3105</a>	White	NITRA pneumatic pushbutton, IP65, 22mm, momentary, plastic base, plastic bezel, black, operator only, Operator: white, flush, 30mm, round, plastic.	0.07	\$2.75
<a href="#">ECP3106</a>	Red	NITRA pneumatic pushbutton, IP65, 22mm, momentary, plastic base, plastic bezel, black, operator only, Operator: red, flush, 30mm, round, plastic, operator text "(O)".	0.07	\$3.00
<a href="#">ECP3107</a>	Green	NITRA pneumatic pushbutton, IP65, 22mm, momentary, plastic base, plastic bezel, black, operator only, Operator: green, flush, 30mm, round, plastic, operator text "(I)".	0.07	\$3.00

### Dimensions mm [inches]



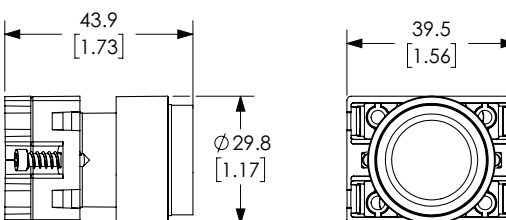
## Momentary extended pushbuttons with protective plastic ring (30mm diameter actuator)



**ECP3110**

Part Number	Color	Description	Weight (lbs)	Price
<a href="#">ECP3110</a>	Black	NITRA pneumatic pushbutton, IP65, 22mm, momentary, plastic base, plastic bezel, black, operator only, Operator: black, extended, 30mm, round, plastic.	0.07	\$2.75
<a href="#">ECP3111</a>	Red	NITRA pneumatic pushbutton, IP65, 22mm, momentary, plastic base, plastic bezel, black, operator only, Operator: red, extended, 30mm, round, plastic.	0.07	\$2.75
<a href="#">ECP3112</a>	Green	NITRA pneumatic pushbutton, IP65, 22mm, momentary, plastic base, plastic bezel, black, operator only, Operator: green, extended, 30mm, round, plastic.	0.07	\$2.75
<a href="#">ECP3113</a>	Yellow	NITRA pneumatic pushbutton, IP65, 22mm, momentary, plastic base, plastic bezel, black, operator only, Operator: yellow, extended, 30mm, round, plastic.	0.07	\$2.75
<a href="#">ECP3114</a>	Blue	NITRA pneumatic pushbutton, IP65, 22mm, momentary, plastic base, plastic bezel, black, operator only, Operator: blue, extended, 30mm, round, plastic.	0.07	\$2.75
<a href="#">ECP3115</a>	White	NITRA pneumatic pushbutton, IP65, 22mm, momentary, plastic base, plastic bezel, black, operator only, Operator: white, extended, 30mm, round, plastic.	0.07	\$2.75

### Dimensions mm [inches]



See our website [www.AutomationDirect.com](http://www.AutomationDirect.com) for complete Engineering drawings.



# Pneumatic Key Selector Switches, 22mm

## Key selector switches



**ECP3420**

Part Number	Color	Description	Weight (lbs)	Price
<b>ECP3420</b>	Black	NITRA pneumatic selector switch, IP65, 22mm, 2-position, maintained, key removable in all positions, plastic base, plastic bezel, operator only, Operator: black, key, 30mm, round, plastic.	0.17	\$12.00
<b>ECP3430</b>	Black	NITRA pneumatic selector switch, IP65, 22mm, 2-position, spring return from right, key removable left position, plastic base, plastic bezel, operator only, Operator: black, key, 30mm, round, plastic.	0.17	\$12.00
<b>ECP3470</b>	Black	NITRA pneumatic selector switch, IP65, 22mm, 3-position, maintained, key removable in all positions, plastic base, plastic bezel, operator only, Operator: black, key, 30mm, round, plastic.	0.17	\$11.00

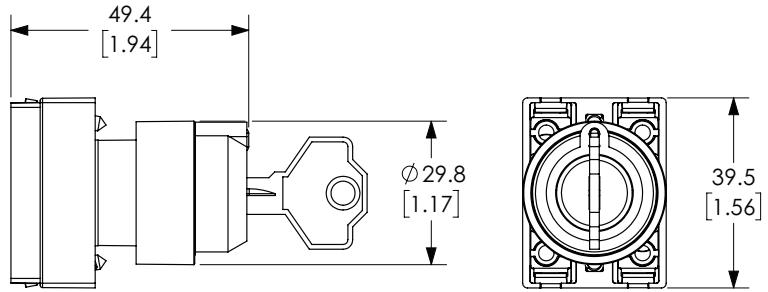


Note: Keyed switches come with two keys. All plastic 22mm keyed switches are keyed the same. Replacement keys are available. Order part no. ECX1067-2 (pkg. of 2). Keys for plastic 22mm keyed switches are not compatible with Cutler-Hammer key switches.



**ECP3470**

### Dimensions mm [inches]



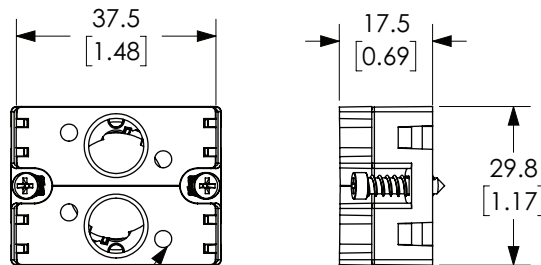
## Pneumatic switch accessory - support base with adapters



**ECP3029-02**

Part Number	Description	Weight (lbs)	Price
<b>ECP3029-02</b>	NITRA valve adapter block, replacement, plastic. For use with ECP series pneumatic pushbuttons.	0.03	\$1.00

### Dimensions mm [inches]



M3 THRU HOLE SCREWS INCLUDED

Note: base sold as three piece kit.

See our website [www.AutomationDirect.com](http://www.AutomationDirect.com) for complete Engineering drawings.



# Pneumatic Pushbuttons, 22mm

NITRA® pneumatic pushbuttons are all plastic and come with adapters to allow mounting of up to two 3-way valves, or one valve and one to three contact blocks. They fit in a standard 22.5mm hole, just like electrical pushbuttons.

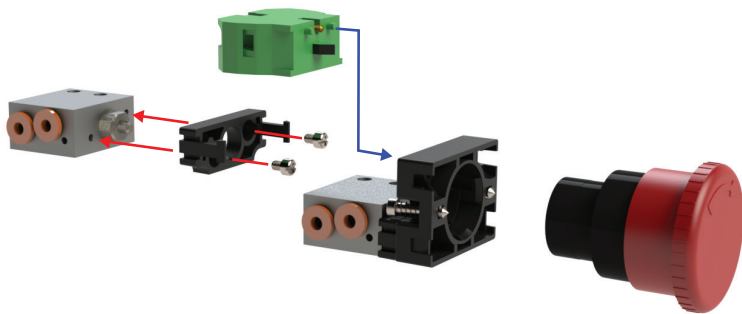
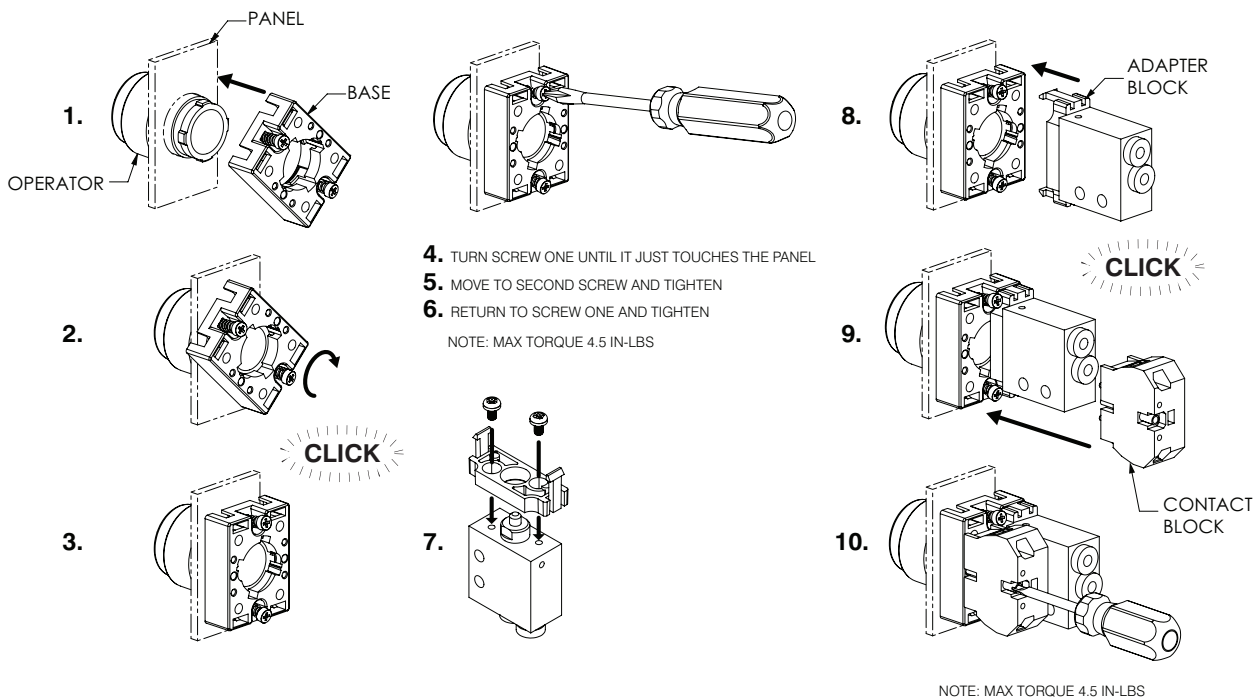
## Features

- Plastic bezel and button
- Valve adapters and mounting screws included
- Valves sold separately
- Bases will work with GCX plastic operators and **only** the three ECX Series contact blocks shown below



Pushbutton Specifications	
<b>Operating Temperature</b>	-13 to 158°F (-25 to +70°C)
<b>Storage Temperature</b>	-40 to 176°F (-40 to +80°C)
<b>Mechanical Life</b>	1,000,000 cycles
<b>Switching Cycles</b>	3600 cycles/hr
<b>Mounting (Valve)</b>	(4) M3x5 valve mounting screws included
<b>Protection</b>	IP65 after installation
<b>Approvals</b>	CE

## Adapter Block Installation



**ECX1040-2**



**ECX1042-2**



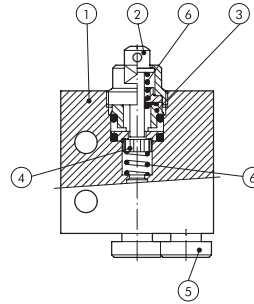
**ECX1030-2**



# Pneumatic Manual Valves

## Pneumatic Manual Valve Materials

1. Aluminum valve body
2. Chemically nickel-plated brass button
3. Brass distance plates
4. NBR gaskets
5. Stainless steel, brass and plastic push-to-connect cartridges
6. Stainless steel springs



## Pneumatic Metal Plunger Valves

These pneumatic valves are used with Nitra pneumatic pushbuttons and switches

## Features

- Available in normally open or normally closed
- 5/32" [4mm] push-to-connect ports located on side or end

### Valve Symbols



Diagram "A"



Diagram "B"

Specifications				
Models	EVP-CA-PL	EVP-AA-PL	EVP-CS-PL	EVP-AS-PL
Price	\$21.50	\$23.50	\$19.00	\$21.50
Weight (lbs)	0.1	0.1	0.1	0.1
Valve Type	2-port (3-way) 2-position			
Acting	Metal plunger, normally closed, spring return	Metal plunger, normally open, spring return	Metal plunger, normally closed, spring return	Metal plunger, normally open, spring return
Diagram	B	A	B	A
Port Size	Axial ports 5/32in (4mm)		Side ports 5/32in (4mm)	
Flow (Cv)	0.13	0.13	0.13	0.13
Fluid	Air (to be filtered by 40µ filter element)			
Min. / Max. Pressure	7.25 to 145 psi (0.5 to 10 bar)			
Temperature	14°F to 140°F (-10°C to 60°C)			
Lubrication	Not Required			
Body	Aluminum			
Protection	IP65			

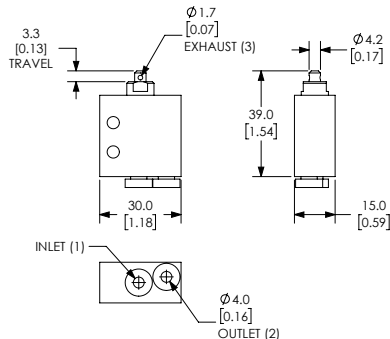


EVP-CA-PL

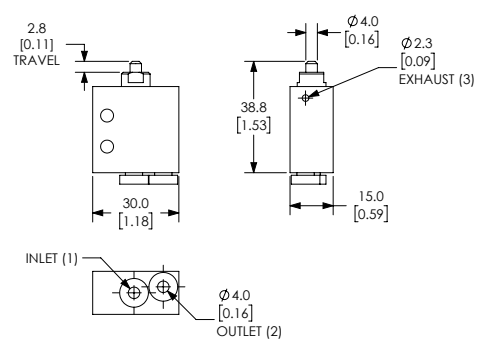


EVP-CS-PL

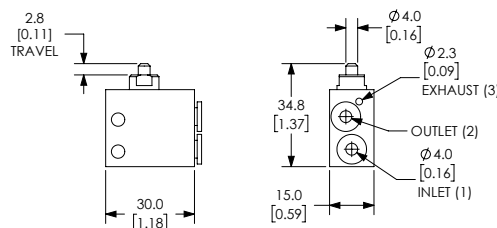
## Dimensions mm [inches]



EVP-CA-PL



EVP-AA-PL



EVP-CS-PL / EVP-AS-PL

See our website [www.AutomationDirect.com](http://www.AutomationDirect.com) for complete Engineering drawings.