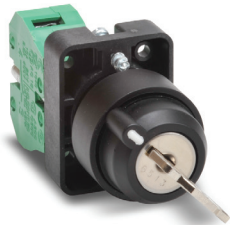


GCX Series 22mm Plastic Key Switches and Selector Switches

Key-Operated Selector Switches



GCX3420

Key-Operated Selector Switches			
Part Number	Price	Drawing Link	Description
GCX3420	\$15.50	PDF	AutomationDirect selector switch, 22mm, 2-position, maintained, key removable in all positions, (1) N.O. contact(s), plastic base, plastic bezel, Operator: black, key, 30mm, round, plastic.
GCX3430	\$15.50	PDF	AutomationDirect selector switch, IP65, 22mm, 2-position, spring return from right, key removable left position, (1) N.O. contact(s), plastic base, plastic bezel, Operator: black, key, 30mm, round, plastic.
GCX3470-22	\$22.50	PDF	AutomationDirect selector switch, 22mm, 3-position, maintained, key removable in all positions, (2) N.O./ (2) N.C. contact(s), plastic base, plastic bezel, Operator: black, key, 30mm, round, plastic.



Note: Keyed switches come with two keys. All plastic 22mm keyed switches are keyed the same. Replacement keys are available. Order part no. [ECX1067-2](#) (pkg. of 2). Keys for plastic 22mm keyed switches are not compatible with Cutler-Hammer key switches.



Note: When using switches having two-deep contact blocks (such as, Model [GCX3470-22](#)) with the 22mm plastic enclosures, be sure to use enclosures that are 74mm deep. 51 mm-deep enclosures are too shallow and the switch body will not fit.

Two-Position Selector Switches



GCX3300

Knob version

Two-Position Selector Switches			
Part Number	Price	Drawing Link	Description
GCX3300	\$8.25	PDF	AutomationDirect selector switch, 22mm, 2-position, maintained, (1) N.O. contact(s), plastic base, plastic bezel, Operator: black, knob, 30mm, round, plastic.
GCX3310	\$9.00	PDF	AutomationDirect selector switch, 22mm, 2-position, spring return from right, (1) N.O. contact(s), plastic base, plastic bezel, Operator: black, knob, 30mm, round, plastic.
GCX3350	\$9.00	PDF	AutomationDirect selector switch, 22mm, 2-position, maintained, (1) N.O. contact(s), plastic base, plastic bezel, Operator: black, lever, 30mm, round, plastic.
GCX3360	\$9.50	PDF	AutomationDirect selector switch, 22mm, 2-position, spring return from right, (1) N.O. contact(s), plastic base, plastic bezel, Operator: black, lever, 30mm, round, plastic.



GCX3350

Lever version

Contact Closure Sequence - 2-Position Switch				
Contact Blocks	Contact Arrangement (viewed from front)		Switch Position (viewed from front)	
	Left	Right	Left (Note 1)	Right (Note 2)
1 x N.C.	N.C.		X	
		N.C.	X	
1 x N.O.	N.O.			X
		N.O.		X
2 x N.C.	N.C.	N.C.	XX	
2 x N.O.	N.O.	N.O.		XX

Note 1: Left switch position deactivates all contacts.
 Note 2: Right switch position activates all contacts.

For accessories, see 22mm Plastic Pilot Device Accessories in this section.

GCX Series 22mm Plastic Illuminated Selector Switches

Illuminated Two-Position Selector Switches

20 models available:

- Available in five colors
- 24V and 120V models
- Available in spring-return and maintained styles
- Replacement knobs are available



GCX3245-24

Illuminated Spring Return Two-Position Selector Switches						
Part Number	Lamp Color	Price	Drawing Link	Description	Replacement Incandescent Bulb [5 per pack]	Replacement LED Lamp [2 per pack]
Incandescent						
GCX3241-24	Red	\$12.50	PDF	22mm plastic incandescent illuminated 2-position selector switch. Spring-return from right. 24VDC/VAC. One N.O. contact block. Illuminated colored knob.	ECX1902-5 , 80mA	ECX1911-2 , 26mA
GCX3241-120	Red	\$13.00	PDF	22mm plastic incandescent illuminated 2-position selector switch. Spring-return from right. 120VDC/VAC. One N.O. contact block. Illuminated colored knob.	ECX1904-5 , 20mA	ECX1921-2 , 5mA
GCX3242-24	Green	\$12.50	PDF	22mm plastic incandescent illuminated 2-position selector switch. Spring-return from right. 24VDC/VAC. One N.O. contact block. Illuminated colored knob.	ECX1902-5 , 80mA	ECX1912-2 , 26mA
GCX3242-120	Green	\$13.00	PDF	22mm plastic incandescent illuminated 2-position selector switch. Spring-return from right. 120VDC/VAC. One N.O. contact block. Illuminated colored knob.	ECX1904-5 , 20mA	ECX1922-2 , 5mA
GCX3243-24	Yellow	\$12.50	PDF	22mm plastic incandescent illuminated 2-position selector switch. Spring-return from right. 24VDC/VAC. One N.O. contact block. Illuminated colored knob.	ECX1902-5 , 80mA	ECX1913-2 , 26mA
GCX3243-120	Yellow	\$13.00	PDF	22mm plastic incandescent illuminated 2-position selector switch. Spring-return from right. 120VDC/VAC. One N.O. contact block. Illuminated colored knob.	ECX1904-5 , 20mA	ECX1923-2 , 5mA
GCX3244-24	Blue	\$12.50	PDF	22mm plastic incandescent illuminated 2-position selector switch. Spring-return from right. 24VDC/VAC. One N.O. contact block. Illuminated colored knob.	ECX1902-5 , 80mA	ECX1914-2 , 26mA
GCX3244-120	Blue	\$13.00	PDF	22mm plastic incandescent illuminated 2-position selector switch. Spring-return from right. 120VDC/VAC. One N.O. contact block. Illuminated colored knob.	ECX1904-5 , 20mA	ECX1924-2 , 5mA
GCX3245-24	Clear	\$12.50	PDF	22mm plastic incandescent illuminated 2-position selector switch. Spring-return from right. 24VDC/VAC. One N.O. contact block. Illuminated colored knob.	ECX1902-5 , 80mA	ECX1915-2 , 26mA
GCX3245-120	Clear	\$13.00	PDF	22mm plastic incandescent illuminated 2-position selector switch. Spring-return from right. 120VDC/VAC. One N.O. contact block. Illuminated colored knob.	ECX1904-5 , 20mA	ECX1925-2 , 5mA
LED						
GCX3241-24L	Red	\$17.50	PDF	22mm plastic LED illuminated 2-position selector switch. Spring-return from right. 24VDC/VAC. One N.O. contact block. Illuminated colored knob.	ECX1902-5 , 80mA	ECX1911-2 , 26mA
GCX3241-120L	Red	\$17.50	PDF	22mm plastic LED illuminated 2-position selector switch. Spring-return from right. 120VDC/VAC. One N.O. contact block. Illuminated colored knob.	ECX1904-5 , 20mA	ECX1921-2 , 5mA
GCX3242-24L	Green	\$20.50	PDF	22mm plastic LED illuminated 2-position selector switch. Spring-return from right. 24VDC/VAC. One N.O. contact block. Illuminated colored knob.	ECX1902-5 , 80mA	ECX1912-2 , 26mA
GCX3242-120L	Green	\$20.50	PDF	22mm plastic LED illuminated 2-position selector switch. Spring-return from right. 120VDC/VAC. One N.O. contact block. Illuminated colored knob.	ECX1904-5 , 20mA	ECX1922-2 , 5mA
GCX3243-24L	Yellow	\$17.50	PDF	22mm plastic LED illuminated 2-position selector switch. Spring-return from right. 24VDC/VAC. One N.O. contact block. Illuminated colored knob.	ECX1902-5 , 80mA	ECX1913-2 , 26mA
GCX3243-120L	Yellow	\$17.50	PDF	22mm plastic LED illuminated 2-position selector switch. Spring-return from right. 120VDC/VAC. One N.O. contact block. Illuminated colored knob.	ECX1904-5 , 20mA	ECX1923-2 , 5mA
GCX3244-24L	Blue	\$20.50	PDF	22mm plastic LED illuminated 2-position selector switch. Spring-return from right. 24VDC/VAC. One N.O. contact block. Illuminated colored knob.	ECX1902-5 , 80mA	ECX1914-2 , 26mA
GCX3244-120L	Blue	\$20.50	PDF	22mm plastic LED illuminated 2-position selector switch. Spring-return from right. 120VDC/VAC. One N.O. contact block. Illuminated colored knob.	ECX1904-5 , 20mA	ECX1924-2 , 5mA
GCX3245-24L	Clear	\$21.50	PDF	22mm plastic LED illuminated 2-position selector switch. Spring-return from right. 24VDC/VAC. One N.O. contact block. Illuminated colored knob.	ECX1902-5 , 80mA	ECX1915-2 , 26mA
GCX3245-120L	Clear	\$22.50	PDF	22mm plastic LED illuminated 2-position selector switch. Spring-return from right. 120VDC/VAC. One N.O. contact block. Illuminated colored knob.	ECX1904-5 , 20mA	ECX1925-2 , 5mA

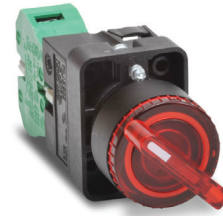
For accessories, see 22mm Plastic Pilot Device Accessories in this section.

GCX Series 22mm Plastic Illuminated Selector Switches

Illuminated Two-Position Selector Switches

20 models available:

- Available in five colors
- 24V and 120V models
- Available in spring-return and maintained styles
- Replacement knobs are available



GCX3251-24

Illuminated Maintained Two-Position Selector Switches						
Part Number	Lamp Color	Price	Drawing Link	Description	Replacement Incandescent Bulb [5 per pack]	Replacement LED Lamp [2 per pack]
Incandescent						
GCX3251-24	Red	\$12.50	PDF	22mm plastic incandescent illuminated 2-position selector switch. Maintained. 24VDC/VAC. One N.O. contact block. Illuminated colored knob.	ECX1902-5 , 80mA	ECX1911-2 , 26mA
GCX3251-120	Red	\$13.00	PDF	22mm plastic incandescent illuminated 2-position selector switch. Maintained. 120VDC/VAC. One N.O. contact block. Illuminated colored knob.	ECX1904-5 , 20mA	ECX1921-2 , 5mA
GCX3252-24	Green	\$12.50	PDF	22mm plastic incandescent illuminated 2-position selector switch. Maintained. 24VDC/VAC. One N.O. contact block. Illuminated colored knob.	ECX1902-5 , 80mA	ECX1912-2 , 26mA
GCX3252-120	Green	\$13.00	PDF	22mm plastic incandescent illuminated 2-position selector switch. Maintained. 120VDC/VAC. One N.O. contact block. Illuminated colored knob.	ECX1904-5 , 20mA	ECX1922-2 , 5mA
GCX3253-24	Yellow	\$12.50	PDF	22mm plastic incandescent illuminated 2-position selector switch. Maintained. 24VDC/VAC. One N.O. contact block. Illuminated colored knob.	ECX1902-5 , 80mA	ECX1913-2 , 26mA
GCX3253-120	Yellow	\$13.00	PDF	22mm plastic incandescent illuminated 2-position selector switch. Maintained. 120VDC/VAC. One N.O. contact block. Illuminated colored knob.	ECX1904-5 , 20mA	ECX1923-2 , 5mA
GCX3254-24	Blue	\$12.50	PDF	22mm plastic incandescent illuminated 2-position selector switch. Maintained. 24VDC/VAC. One N.O. contact block. Illuminated colored knob.	ECX1902-5 , 80mA	ECX1914-2 , 26mA
GCX3254-120	Blue	\$13.00	PDF	22mm plastic incandescent illuminated 2-position selector switch. Maintained. 120VDC/VAC. One N.O. contact block. Illuminated colored knob.	ECX1904-5 , 20mA	ECX1924-2 , 5mA
GCX3255-24	Clear	\$12.50	PDF	22mm plastic incandescent illuminated 2-position selector switch. Maintained. 24VDC/VAC. One N.O. contact block. Illuminated colored knob.	ECX1902-5 , 80mA	ECX1915-2 , 26mA
GCX3255-120	Clear	\$13.00	PDF	22mm plastic incandescent illuminated 2-position selector switch. Maintained. 120VDC/VAC. One N.O. contact block. Illuminated colored knob.	ECX1904-5 , 20mA	ECX1925-2 , 5mA
LED						
GCX3251-24L	Red	\$17.50	PDF	22mm plastic LED illuminated 2-position selector switch. Maintained. 24VDC/VAC. One N.O. contact block. Illuminated colored knob.	ECX1902-5 , 80mA	ECX1911-2 , 26mA
GCX3251-120L	Red	\$18.00	PDF	22mm plastic LED illuminated 2-position selector switch. Maintained. 120VDC/VAC. One N.O. contact block. Illuminated colored knob.	ECX1904-5 , 20mA	ECX1921-2 , 5mA
GCX3252-24L	Green	\$20.00	PDF	22mm plastic LED illuminated 2-position selector switch. Maintained. 24VDC/VAC. One N.O. contact block. Illuminated colored knob.	ECX1902-5 , 80mA	ECX1912-2 , 26mA
GCX3252-120L	Green	\$20.50	PDF	22mm plastic LED illuminated 2-position selector switch. Maintained. 120VDC/VAC. One N.O. contact block. Illuminated colored knob.	ECX1904-5 , 20mA	ECX1922-2 , 5mA
GCX3253-24L	Yellow	\$17.50	PDF	22mm plastic LED illuminated 2-position selector switch. Maintained. 24VDC/VAC. One N.O. contact block. Illuminated colored knob.	ECX1902-5 , 80mA	ECX1913-2 , 26mA
GCX3253-120L	Yellow	\$18.00	PDF	22mm plastic LED illuminated 2-position selector switch. Maintained. 120VDC/VAC. One N.O. contact block. Illuminated colored knob.	ECX1904-5 , 20mA	ECX1923-2 , 5mA
GCX3254-24L	Blue	\$20.00	PDF	22mm plastic LED illuminated 2-position selector switch. Maintained. 24VDC/VAC. One N.O. contact block. Illuminated colored knob.	ECX1902-5 , 80mA	ECX1914-2 , 26mA
GCX3254-120L	Blue	\$20.50	PDF	22mm plastic LED illuminated 2-position selector switch. Maintained. 120VDC/VAC. One N.O. contact block. Illuminated colored knob.	ECX1904-5 , 20mA	ECX1924-2 , 5mA
GCX3255-24L	Clear	\$21.50	PDF	22mm plastic LED illuminated 2-position selector switch. Maintained. 24VDC/VAC. One N.O. contact block. Illuminated colored knob.	ECX1902-5 , 80mA	ECX1915-2 , 26mA
GCX3255-120L	Clear	\$22.50	PDF	22mm plastic LED illuminated 2-position selector switch. Maintained. 120VDC/VAC. One N.O. contact block. Illuminated colored knob.	ECX1904-5 , 20mA	ECX1925-2 , 5mA

For accessories, see 22mm Plastic Pilot Device Accessories in this section.

22mm Plastic Pilot Device Accessories

Replacement Incandescent Bulbs



ECX1902-5

Replacement LED Lamps



ECX1915-2

Hole Plug



ECX1490

Protective Covers for Pushbuttons



ECX1703-5

Knockout Punches



109225

Replacement Keys



ECX1067-2

Replacement Incandescent Bulbs

Part Number	Quantity	Price	Rating	Description
ECX1900-5	5	\$9.50	6V@ 200mA 1.2 watts	6V replacement bulb for 22mm switches and indicators. Miniature bayonet base T31/4
ECX1902-5	5	\$9.50	24V@ 80mA 2 watts	24V replacement bulb for 22mm switches and indicators. Miniature bayonet base T31/4
ECX1904-5	5	\$20.00	130V@20mA 2.6 watts	120V replacement bulb for 22mm switches and indicators. Miniature bayonet base T31/4

Note: Bulb removal tool available. Order part number HT8LAMPTOOL.

Replacement LED Lamps

Part Number	Color	Quantity	Price	Rating	Description
ECX1911-2	Red	2	\$17.50	24V@26mA 0.6 watts	LED replacement lamp for miniature bayonet bases. Works with 22mm switches and indicators, but illumination will not be as even when used with the ECX 22mm indicators. Note: Will not replace sealed Cutler-Hammer monoblock LED indicators.
ECX1912-2	Green		\$22.00		
ECX1913-2	Yellow		\$17.50		
ECX1914-2	Blue		\$23.50		
ECX1915-2	White		\$28.00		
ECX1921-2	Red		\$17.50	120V@5mA 0.6 watts	
ECX1922-2	Green		\$22.00		
ECX1923-2	Yellow		\$17.50		
ECX1924-2	Blue		\$23.50		
ECX1925-2	White		\$28.00		

Note: LED modules have very low current draw and should not be used with triac output devices like PLC triac output modules. It is recommended that dry contact outputs be used to switch 120 volt AC LED modules.

Hole Plug

Part Number	Color	Price	Description
ECX1490	Black	\$2.75	Plastic hole plug for 22.5 mm openings in panels and enclosures; supplied with O-ring and mounting screw. Two plugs per package.

Protective Covers for Pushbuttons

Part Number	Color	Quantity	Price	Description
ECX1700-5	Black	5	\$7.50	Silicone protective covers for use with 22mm standard-size flush pushbuttons. Will not work with Cutler-Hammer pushbuttons, 22mm plastic illuminated or extended pushbuttons, or 22mm plastic pushbuttons with 40mm actuator face.
ECX1701-5	Red		\$7.50	
ECX1702-5	Green		\$7.50	
ECX1703-5	Yellow		\$7.50	
ECX1704-5	Blue		\$7.50	
ECX1705-5	Clear		\$7.50	
ECX1706-5	Clear		\$13.00	Clear silicone protective covers for use with 22mm illuminated and extended pushbuttons only. Will not work with Cutler-Hammer pushbuttons or 22mm mushroom pushbuttons.

Ruko's knockout punch hole-cutting tool includes punch, die and draw bolt (without ball bearing). Use for sheet steel, stainless-steel sheets, non-ferrous and light metals, and plastics up to 0.16" (8 ga.) thick. Replacement bolts are offered in three of the most popular sizes. See the Tools section of the catalog for details.

Note: Part number [109225](#) is recommended when punching holes for 22mm pilot devices.

Replacement Keys

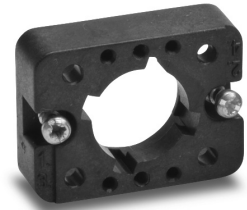
Part Number	Quantity	Price	Description
ECX1067-2	2	\$6.50	Replacement key for GCX series key-actuated selector switches, pack of 2 sets (2 keys each). NOTE: Will not work with Cutler-Hammer 22mm switches.

Note: All key-actuated 22mm plastic selector switches are keyed alike.

22mm Plastic Pilot Device Accessories

Replacement 22mm Support Base

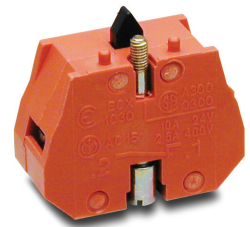
Replacement 22mm Support Base				
Part Number	Quantity	Price	Drawing Link	Description
ECX3029-2	1	\$1.75	PDF	22mm plastic support base Note: This item is supplied as a replacement part and is not required with any switch assembly. Will not work with Cutler-Hammer 22mm switches sold by AutomationDirect



[ECX3029-2](#)

Replacement Contact Blocks

Replacement Contact Blocks					
Part Number	Quantity	Price	Drawing Link	Contacts	Description
ECX1030-2	2	\$7.25	PDF	Red, normally-closed (N.C.)	Replacement contact block for 22mm pushbuttons and selector switches. Tightening Torque, terminal screw: 0.8 N-m max mounting screw: 0.5 N-m max Note: Will not work with Cutler-Hammer 22mm switches sold by AutomationDirect
ECX1030-5	5	\$17.00	PDF		
ECX1040-2	2	\$7.25	PDF	Green, normally-open (N.O.)	Note: Will not work with Cutler-Hammer 22mm switches sold by AutomationDirect
ECX1040-5	5	\$17.00	PDF		
ECX1042-2	2	\$7.25	PDF	Brown, normally-open (N.O.), push-push	Use on lighted Push-push button only



[ECX1030-2](#)

Note: See electrical specifications on GCX Series 22mm Plastic Pilot Devices

EMERGENCY STOP Legend Plate

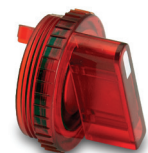
EMERGENCY STOP Legend Plate				
Part Number	Quantity	Price	Drawing Link	Description
ECX1651	1	\$2.75	PDF	Oversize yellow circular EMERGENCY STOP legend plate for 22mm E-stop type mushroom pushbuttons, 60mm outside diameter.



[ECX1651](#)

Two-Position Short Lever Operator

Short Lever Replacement Operator				
Part Number	Lamp Color	Price	2-Position	Use with
GR1172PR-5	Red	\$16.50	22mm 2-position selector switch illuminated short lever replacement operator, 5/pk	Part numbers starting with GCX124, GCX125, GCX324, GCX325
GR1172PV-5	Green	\$16.50	22mm 2-position selector switch illuminated short lever replacement operator, 5/pk	
GR1172PG-5	Yellow	\$16.50	22mm 2-position selector switch illuminated short lever replacement operator, 5/pk	
GR1172PB-5	Blue	\$16.50	22mm 2-position selector switch illuminated short lever replacement operator, 5/pk	
GR1172PN-5	Clear	\$16.50	22mm 2-position selector switch illuminated short lever replacement operator, 5/pk	



[GR1172PR-5](#)

22mm Plastic Pilot Device Accessories

Three-Position Short Lever Operator

Short Lever Replacement Operator				
Part Number	Lamp Color	Price	3-Position	Use with
GR1288PR-5	Red	\$16.50	22mm 3-position selector switch illuminated short lever replacement operator, 5/pk	Part numbers starting with GCX126, GCX128, GCX326, GVX328
GR1288PV-5	Green	\$16.50	22mm 3-position selector switch illuminated short lever replacement operator, 5/pk	
GR1288PG-5	Yellow	\$16.50	22mm 3-position selector switch illuminated short lever replacement operator, 5/pk	
GR1288PB-5	Blue	\$16.50	22mm 3-position selector switch illuminated short lever replacement operator, 5/pk	
GR1288PN-5	Clear	\$16.50	22mm 3-position selector switch illuminated short lever replacement operator, 5/pk	



[GR1288PR-5](#)

Mushroom Switch Replacement Operator

Mushroom Switch Replacement Operator				
Part Number	Lamp Color	Price	Description	Use with
PL1171PR-5	Red	\$7.25	22mm, illuminated momentary Mushroom switch replacement operator, red, 5/pk	Part numbers starting with GCX1221, GCX3221 mushroom-style illuminated pushbuttons
PL1298P-5	Red	\$7.25	22mm illuminated twist-to-release mushroom switch replacement operator, red, 5/pk	Part numbers starting with GCX1226, GCX3226 mushroom-style illuminated pushbuttons



[PL1298P-5](#)

Flush Pushbutton Replacement Operator

Flush Pushbutton Replacement Operator				
Part Number	Lamp Color	Price	Description	Use with
GR1168PR-5	Red	\$9.00	22mm illuminated flush pushbutton replacement operator, 5/pk	Part numbers starting with GCX119, GCX120, GCX319, GCX320
GR1168PV-5	Green	\$9.00	22mm illuminated flush pushbutton replacement operator, 5/pk	
GR1168PG-5	Yellow	\$9.00	22mm illuminated flush pushbutton replacement operator, 5/pk	
GR1168PB-5	Blue	\$9.00	22mm illuminated flush pushbutton replacement operator, 5/pk	
GR1168PN-5	Clear	\$9.00	22mm illuminated flush pushbutton replacement operator, 5/pk	
GR1168PW-5	White	\$9.00	22mm illuminated flush pushbutton replacement operator, 5/pk	



[GR1168PR-5](#)

Extended Pushbutton Replacement Operator

Extended Pushbutton Replacement Operator				
Part Number	Lamp Color	Price	Description	Use with
PL1308PR-5	Red	\$7.00	22mm illuminated extended pushbutton, replacement operator, 5/pk	Part numbers starting with GCX121, GCX321
PL1308PV-5	Green	\$7.00	22mm illuminated extended pushbutton, replacement operator, 5/pk	
PL1308PG-5	Yellow	\$7.00	22mm illuminated extended pushbutton, replacement operator, 5/pk	
PL1308PB-5	Blue	\$7.00	22mm illuminated extended pushbutton, replacement operator, 5/pk	
PL1308PN-5	Clear	\$7.00	22mm illuminated extended pushbutton, replacement operator, 5/pk	
PL1308PW-5	White	\$7.00	22mm illuminated extended pushbutton, replacement operator, 5/pk	



[PL1308PR-5](#)

22mm Plastic Pilot Device Accessories

Legend Plates

Plastic legend plates for use with 22mm pilot devices. White engraved text on colored background. O-ring included.



ECX1670-B07



ECX1670-R03

Plastic Legend Plates				
Legend	Color of Field	Part Number	Price	Drawing Link
AUTO OFF HAND	Black	ECX1670-B46	\$3.75	PDF
Blank Plate	Black	ECX1670-B	\$3.00	PDF
Blank Plate	Red	ECX1670-R	\$3.00	PDF
CLAMP	Black	ECX1670-B24	\$3.75	PDF
CLOSE	Black	ECX1670-B01	\$3.00	PDF
DOWN	Black	ECX1670-B02	\$3.00	PDF
EMERG. STOP	Red	ECX1670-R03	\$3.00	PDF
EXTEND	Black	ECX1670-B51	\$3.75	PDF
FEEDER OFF	Black	ECX1670-B26	\$3.75	PDF
FEEDER ON	Black	ECX1670-B25	\$3.75	PDF
FOR OFF REV	Black	ECX1670-B19	\$3.00	PDF
FOR-REV	Black	ECX1670-B13	\$3.00	PDF
FORWARD	Black	ECX1670-B04	\$3.00	PDF
GRIP	Black	ECX1670-B53	\$3.75	PDF
HAND-AUTO	Black	ECX1670-B14	\$3.00	PDF
HAND OFF AUTO	Black	ECX1670-B20	\$3.00	PDF
HIGH	Black	ECX1670-B27	\$3.75	PDF
HIGH LOW	Black	ECX1670-B43	\$3.75	PDF
IN	Black	ECX1670-B28	\$3.75	PDF
INCH	Black	ECX1670-B29	\$3.75	PDF
JOG	Black	ECX1670-B05	\$3.00	PDF
JOG FOR	Black	ECX1670-B30	\$3.75	PDF
JOG REV	Black	ECX1670-B31	\$3.75	PDF
JOG-RUN	Black	ECX1670-B15	\$3.00	PDF
LOW	Black	ECX1670-B32	\$3.75	PDF
LOWER	Black	ECX1670-B33	\$3.75	PDF

Note: Legend plate text is 3mm in height

Plastic Legend Plates				
Legend	Color of Field	Part Number	Price	Drawing Link
MAN AUTO	Black	ECX1670-B44	\$3.75	PDF
MAN OFF AUTO	Black	ECX1670-B47	\$3.75	PDF
MOTOR RUN	Black	ECX1670-B22	\$3.00	PDF
MOTOR STOP	Black	ECX1670-B23	\$3.00	PDF
OFF	Black	ECX1670-B34	\$3.75	PDF
OFF-ON	Black	ECX1670-B16	\$3.00	PDF
ON	Black	ECX1670-B06	\$3.00	PDF
OPEN	Black	ECX1670-B07	\$3.00	PDF
OPEN OFF CLOSE	Black	ECX1670-B48	\$3.75	PDF
OPEN-CLOSE	Black	ECX1670-B17	\$3.00	PDF
OUT	Black	ECX1670-B35	\$3.75	PDF
POWER ON	Black	ECX1670-B21	\$3.00	PDF
PULL ON PUSH OFF	Black	ECX1670-B50	\$3.75	PDF
RAISE	Black	ECX1670-B36	\$3.75	PDF
READY	Black	ECX1670-B37	\$3.75	PDF
RELEASE	Black	ECX1670-B54	\$3.75	PDF
RESET	Black	ECX1670-B38	\$3.75	PDF
RETRACT	Black	ECX1670-B52	\$3.75	PDF
REVERSE	Black	ECX1670-B08	\$3.00	PDF
RUN	Black	ECX1670-B09	\$3.00	PDF
SAFE RUN	Black	ECX1670-B45	\$3.75	PDF
START	Black	ECX1670-B10	\$3.00	PDF
STOP	Black	ECX1670-B11	\$3.00	PDF
STOP	Red	ECX1670-R11	\$3.00	PDF
TEST	Black	ECX1670-B39	\$3.75	PDF
TRANSFER	Black	ECX1670-B40	\$3.75	PDF
TRIP	Black	ECX1670-B41	\$3.75	PDF
UNCLAMP	Black	ECX1670-B42	\$3.75	PDF
UP	Black	ECX1670-B12	\$3.00	PDF
UP OFF DOWN	Black	ECX1670-B49	\$3.75	PDF
UP-DOWN	Black	ECX1670-B18	\$3.00	PDF

22mm Plastic Pilot Device Accessories



ECX1690-B16



ECX1690-R11

Jumbo Plastic Legend Plates				
<i>Legend</i>	<i>Color of Field</i>	<i>Part Number</i>	<i>Price</i>	<i>Drawing Link</i>
Blank Plate	Black	<u>ECX1690-B</u>	\$3.75	PDF
Blank Plate	Red	<u>ECX1690-R</u>	\$3.75	PDF
EMERG. STOP	Red	<u>ECX1690-R03</u>	\$3.75	PDF
HAND-OFF-AUTO	Black	<u>ECX1690-B20</u>	\$3.75	PDF
JOG	Black	<u>ECX1690-B05</u>	\$3.75	PDF
OFF-ON	Black	<u>ECX1690-B16</u>	\$3.75	PDF
OPEN-CLOSE	Black	<u>ECX1690-B17</u>	\$3.75	PDF
POWER ON	Black	<u>ECX1690-B21</u>	\$3.75	PDF
START	Black	<u>ECX1690-B10</u>	\$3.75	PDF
STOP	Red	<u>ECX1690-R11</u>	\$3.75	PDF

Note: Legend plate text is 3mm in height

GCX Series 22mm Plastic Pilot Devices Specifications

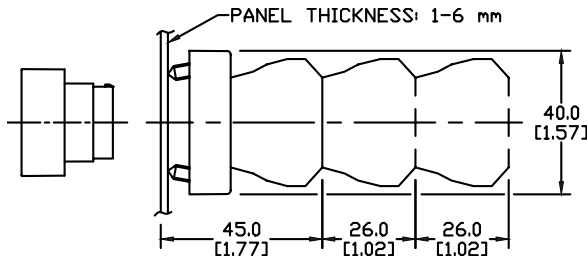
Assembly information

These pushbuttons and indicator lights are supplied with the appropriate contact blocks, unless otherwise indicated. Use these drawings as a guide to make sure there is adequate clearance behind the panel.

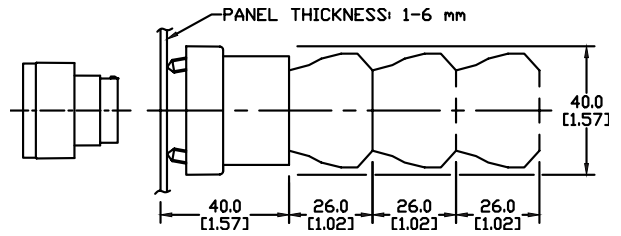
Dimensions

mm
[inches]

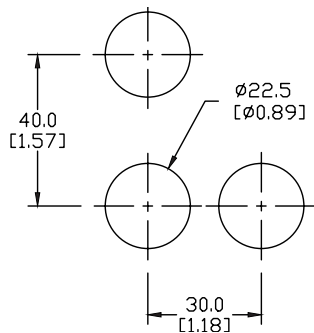
Pushbuttons and selector switches



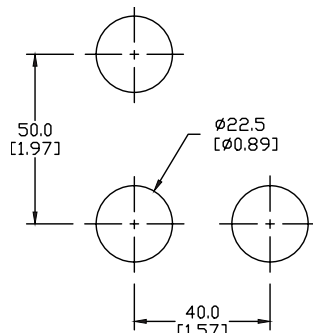
Illuminated pushbuttons and selector switches/indicator lights



Mounting



This layout is suitable if all switches are 230V or less and the same polarity.

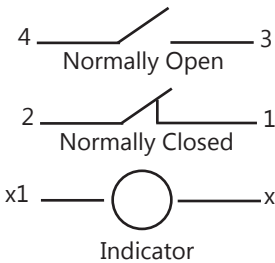


This layout is suitable if all switches are 400V or less and different polarity.

NOTE: Contact blocks can be arranged up to three deep by two wide.



Typical Wiring



Specifications

These specifications apply to all the GCX and ECX 22mm plastic pushbuttons and switches.

Physical Specifications		Electrical Specifications	
Standards Reference	CEI EN 60947-5-1, CSA C22-2 n.14	Rated Thermal Current (contact block)	A300, Q300 (Refer to E22 Series mounting/contact rating section for details)
Approvals	UL File E189258, IMQ (where specified)	Rated Insulation Voltage	Ui 660V according to CEI EN 60947-5-1, 300V according to CSA C22-2 n.14 and UL 508
Enclosure Material	Fiberglass reinforced thermoplastic	Dielectric Strength	3kV (1 second)
Contacts Material	Silver	Insulation Resistance	2MΩ min. (500VDC)
Protection Degree	IP40 for GCX3151-24, GCX3151-120, GCX3153-24 and GCX3153-120. IP65 for all others. (See Appendix of this catalog for explanation of IP ratings according to IEC 144 CEI 70-1.)	Initial Contact Resistance	≤ 25mΩ
Electric Shock Protection	IEC 536, Class II	Short-Circuit Protection*	Cartridge fuses gl 10 A-500V 10, 3x381 100 KA
Temperature Ratings	Storage: -40 to 80°C (-40 to 176° F) Operating: -25° to +70°C (-13° to 158° F)	Terminal Markings	According to CENELEC EN 50013
Working Positions	All working positions are allowed	Connections	Single screw with non-loosening plate clamp, 14AWG max., Tighten to 0.8Nm max
Mechanical Life	Pushbuttons, selector switches, joy stick switches: 1,000,000 operations Emergency mushrooms and push-push pushbuttons: 300,000 operations	Contacts Operation	Self-cleaning types EN01 (N.C.) EN 10 (N.O.) slow-action, positive opening
Positive Opening Operation	(according to IEC 947-5-1) All functions incorporating an NC contact are positive opening operation	Operation Frequency	3600 operations per hour max.
		Utilization Category	AC15 (Control of AC electromagnetic loads) 24 volts AC at 10 amps 130 volts AC at 6.5 amps DC13 (Control of DC electromagnetic loads) 24 volts DC at 1.5 amps 110 volts DC at 0.5 amps

*Note: Recommended, not supplied