

GCX/ECX Series 22mm Plastic Pilot Devices Selection Guide



Flush

- Momentary 30 mm operators
- Available in six colors: black, red, yellow, blue, white and green
- One contact block included
- ON/OFF models also available



Extended

- Momentary 30 mm operators
- Available in six colors: black, red, yellow, blue, white and green
- One contact block included



Two way

- Two way on/off control
- With or without illuminated indicators
- One N.O. and one N.C. contact block included



Illuminated

- Available in clear, red, yellow, blue, white and green
- Momentary and push-push styles
- Flush or extended operators available
- 24 and 120-volt models
- Incandescent and LED models
- One contact block included



Mushroom

- Available in momentary, twist-to-release, and key release models
- One contact block included
- Also available in incandescent and LED illuminated models



Selector switches

- Two and three-position in spring return and maintained, non-illuminated and illuminated
- Incandescent and LED models
- Contact block included



Key switches

- Two and three-position
- Contact blocks included



Joysticks

- Two and four-position, maintained and momentary
- Contact blocks included



Indicator lights

- Available in popular colors
- 24 and 120-volt models
- Frosted diffuser for even lighting
- Incandescent or LED indicators

Accessories



- One through six-hole enclosures



- Bulbs and LEDs



- Protective actuator caps

GCX Series 22mm Plastic Pilot Devices

Specifications

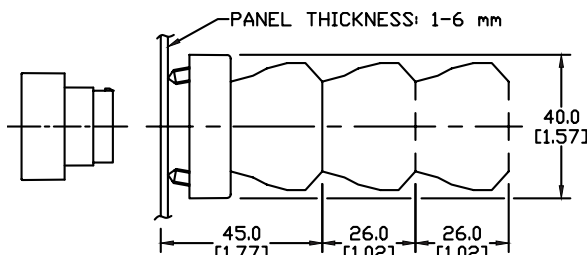
Assembly information

These pushbuttons and indicator lights are supplied with the appropriate contact blocks, unless otherwise indicated. Use these drawings as a guide to make sure there is adequate clearance behind the panel.

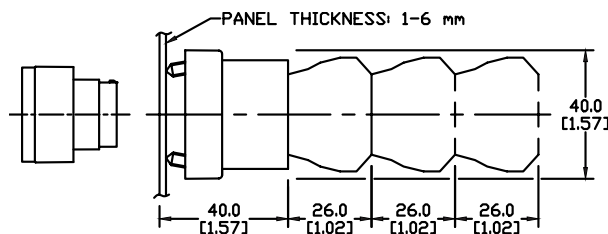
Dimensions

mm
[inches]

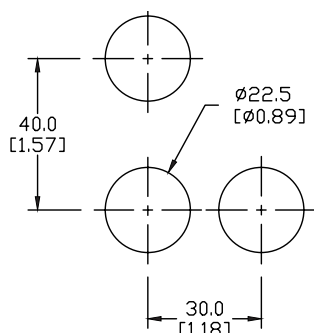
Pushbuttons and selector switches



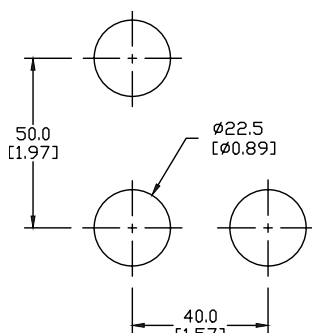
Illuminated pushbuttons and selector switches/indicator lights



Mounting



This layout is suitable if all switches are 230V or less and the same polarity.

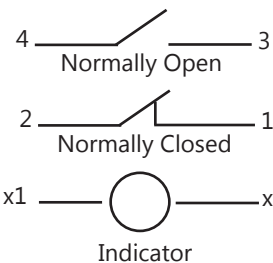


This layout is suitable if all switches are 400V or less and different polarity.

NOTE: Contact blocks can be arranged up to three deep by two wide.



Typical Wiring



Specifications

These specifications apply to all the GCX and ECX 22mm plastic pushbuttons and switches.

Physical Specifications		Electrical Specifications	
Standards Reference	CEI EN 60947-5-1, CSA C22-2 n.14	Rated Thermal Current (contact block)	A300, Q300 (Refer to E22 Series mounting/contact rating section for details)
Approvals	UL File E189258, IMQ (where specified)	Rated Insulation Voltage	Ui 660V according to CEI EN 60947-5-1, 300V according to CSA C22-2 n.14 and UL 508
Enclosure Material	Fiberglass reinforced thermoplastic	Dielectric Strength	3kV (1 second)
Contacts Material	Silver	Insulation Resistance	2MΩ min. (500VDC)
Protection Degree	IP40 for GCX3151-24, GCX3151-120, GCX3153-24 and GCX3153-120. IP65 for all others. (See Appendix of this catalog for explanation of IP ratings according to IEC 144 CEI 70-1.)	Initial Contact Resistance	≤ 25mΩ
Electric Shock Protection	IEC 536, Class II	Short-Circuit Protection*	Cartridge fuses gl 10 A-500V 10, 3x38/1 100 KA
Temperature Ratings	Storage: -40 to 80°C (-40 to 176° F) Operating: -25° to +70°C (-13° to 158° F)	Terminal Markings	According to CENELEC EN 50013
Working Positions	All working positions are allowed	Connections	Single screw with non-loosening plate clamp, 14AWG max., Tighten to 0.8Nm max
Mechanical Life	Pushbuttons, selector switches, joy stick switches: 1,000,000 operations Emergency mushrooms and push-push pushbuttons: 300,000 operations	Contacts Operation	Self-cleaning types EN01 (N.C.) EN 10 (N.O.) slow-action, positive opening
Positive Opening Operation	(according to IEC 947-5-1) All functions incorporating an NC contact are positive opening operation	Operation Frequency	3600 operations per hour max.
		Utilization Category	AC15 (Control of AC electromagnetic loads) 24 volts AC at 10 amps 130 volts AC at 6.5 amps DC13 (Control of DC electromagnetic loads) 24 volts DC at 1.5 amps 110 volts DC at 0.5 amps

*Note: Recommended, not supplied