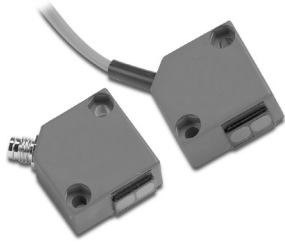


CX Series Photoelectric Sensors



Mini-rectangular Plastic - DC

- 18 models available
- Long operating distances
- Adjustable sensitivity
- Scratch-resistant and easy to clean glass lens
- Axial cable or M8 quick-disconnect models
- Complete overload protection
- Mounting brackets are not needed
- IP65 rated



CX Series Mini-Rectangular Photoelectric Sensors Selection Chart

Part Number		Price	Sensing Range	Output State	Logic	Connection	Wiring	Dimensions	Characteristic Curves
Diffuse									
CX3-AN-1A		\$63.00	Up to 600mm [23.62 in]	N.O.	NPN	2m [6.5 ft] axial cable	Diagram 1	Figure 1	Chart 1
CX3-AP-1A		\$63.00			PNP	2m [6.5 ft] axial cable	Diagram 2	Figure 1	Chart 1
CX3-AN-1F		\$63.00			NPN	M8 [8mm] connector	Diagram 1	Figure 2	Chart 1
CX3-AP-1F		\$63.00			PNP	M8 [8mm] connector	Diagram 2	Figure 2	Chart 1
Diffuse with background suppression									
CX5-AN-1A		\$86.00	15-150mm [0.59 to 5.91 in]	N.O.	NPN	2m [6.5 ft] axial cable	Diagram 1	Figure 1	Chart 2
CX5-AP-1A		\$86.00			PNP	2m [6.5 ft] axial cable	Diagram 2	Figure 1	Chart 2
CX5-AN-1F		\$86.00			NPN	M8 [8mm] connector	Diagram 1	Figure 2	Chart 2
CX5-AP-1F		\$86.00			PNP	M8 [8mm] connector	Diagram 2	Figure 2	Chart 2
Polarized reflective*									
CXP-AN-1A		\$66.00	Up to 2m [6.6 ft]	N.O.	NPN	2m [6.5 ft] axial cable	Diagram 1	Figure 1	Chart 3
CXP-AP-1A		\$66.00			PNP	2m [6.5 ft] axial cable	Diagram 2	Figure 1	Chart 3
CXP-AN-1F		\$66.00			NPN	M8 [8mm] connector	Diagram 1	Figure 2	Chart 3
CXP-AP-1F		\$66.00			PNP	M8 [8mm] connector	Diagram 2	Figure 2	Chart 3
Through-beam**									
CXR-AP-1A	Receiver	\$63.00	Up to 6m [19.7 ft]	N.O.	PNP	2m [6.5 ft] axial cable	Diagram 2	Figure 1	Chart 4
CXR-AP-1F	Receiver	\$63.00			PNP	M8 [8mm] connector	Diagram 2	Figure 2	Chart 4
CXE-0N-1A	Emitter	\$40.50		Receiver dependent	Receiver dependent	2m [6.5 ft] axial cable	Diagram 3	Figure 1	Chart 4
CXE-0N-1F	Emitter	\$40.50				M8 [8mm] connector	Diagram 3	Figure 2	Chart 4

*Purchase reflectors separately.

**Purchase one receiver and one emitter for a complete set.

Wiring Diagrams

Diagram 1
NPN Output

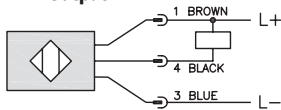


Diagram 2
PNP Output

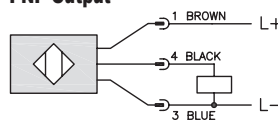
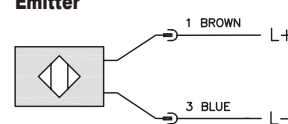


Diagram 3
Emitter

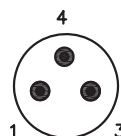


Emitter test input (<4V: OFF / >8V or open: ON) 0.5mA

Switching Element Function

	Through-beam and Reflective Models	Diffuse Reflective Models
Light-on	N.C.	N.O.
Dark-on	N.O.	N.C.

Connector
M8 connector



Warning: These products are not safety sensors and are not suitable for use in personal safety applications.

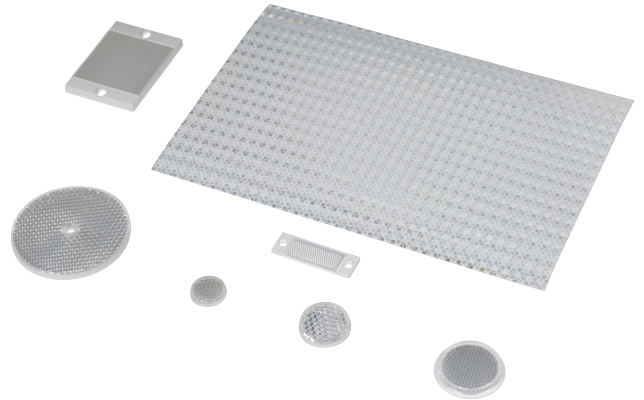
Reflectors

RL Series Reflectors for Polarized Reflective Photoelectric Sensors (All Models)

- Suitable for use with polarized light photoelectric sensors
- Shapes and sizes for most applications
- Miniature types for close mounting in multiple sensor installations
- Single hole, dual hole and self-adhesive mounting types available
- Single and 10-packs available

Installation Notes

- Keep the reflector surface clean to ensure peak detection performance. This is especially true when the maximum sensing range is being used. Clean using a damp cloth.
- When selecting a reflector, it is important to consider the ambient conditions it will be exposed to. Dusty or high humidity conditions may reduce the sensing range as much as 90%.
- Reflectors should be positioned at a 90° angle to the optical axis with a tolerance of $\pm 15^\circ$.



Reflector Specifications								
Part number	Price	Drawing Link	Quantity	Dimensions mm [in]	Degree of Protection	Mounting	Materials	
RL102	\$38.00	PDF	10	25	IEC IP67	Customer-supplied adhesive or other mounting method required	Reflective face: PMMA Polymethylmethacrylate (acrylic) Base material: ABS (Acrylonitrile-butadiene-styren)	
RL102-1	\$4.25		1	[0.98]				
RL103	\$42.50	PDF	10	34.5				
RL103-1	\$4.75		1	[1.36]				
RL104	\$42.50	PDF	10	46				
RL104-1	\$4.75		1	[1.81]				
RL105G	\$38.00	PDF	10	95 x 38		Two 4.3 mm holes		
RL105G-1	\$4.25		1	[3.74 x 1.50]				
RL106G	\$42.50	PDF	10	182 x 42		Two 6mm holes		
RL106G-1	\$4.75		1	[7.17 x 1.65]				
RL110	\$19.00	PDF	10	84		One 5mm hole		
RL110-1	\$2.00		1	[3.31]				
RL116	\$19.00	PDF	10	41 x 60		Two 3mm holes		
RL116-1	\$2.00		1	[3.54 x 2.36]				
RL100DA4	\$38.50	NA	1	200 x 300		Self-adhesive		Paper (Acrylic tape with micro prism)
RL100DC4	\$12.00	NA	1	50 x 300				
RL100DQ1	\$8.75	NA	1	100 x 100				
RL111G	\$60.00	PDF	10	22.5 x 47	Two 3mm slots	Reflective face: PMMA Polymethylmethacrylate (acrylic) Base material: ABS (Acrylonitrile-butadiene-styren)		
RL111G-1	\$7.25		1	[0.89 x 1.85]				
RL112G	\$44.00	PDF	10	19 x 73				
RL112G-1	\$4.75		1	[0.75 x 2.87]				
RL113G	\$53.00	PDF	10	51.4 x 60.3	Two 4mm slots			
RL113G-1	\$6.00		1	[2.02 x 2.37]				

Not recommended for applications involving moist air environments or water immersion.

Reflectors

RL Series Reflectors for Polarized Reflective Laser Photoelectric Sensors (FALN series)

- Suitable for use with polarized light laser photoelectric sensors
- Sizes for most applications
- Miniature types for close mounting in multiple sensor installations
- Single and 5-packs available

Specifications						
Part Number	<i>RL201</i>	<i>RL201-1</i>	<i>RL203</i>	<i>RL203-1</i>	<i>RL204</i>	<i>RL204-1</i>
Price	\$38.00	\$8.25	\$35.50	\$7.75	\$30.00	\$6.75
Quantity	5	1	5	1	5	1
Drawing Link	PDF		PDF		PDF	
Dimensions	60 x 82 mm 2.36 x 3.23 in		19 x 6mm 0.75 x 2.36 in		20mm x 32mm 0.80 in x 1.26 in	
Degree of Protection ¹	IEC IP67					
Mounting	Two 0.4 mm holes		Two 0.4 mm holes		Two 0.3 mm holes	
Materials	Acrylic/polycarbonate					

¹ Not recommended for applications involving moist air environments or water immersion.