

Cuttable Fiber Optic Cable

OPT2050 Diffuse Reflex Mode

OPT2050 Specifications

Part Number	OPT2050
Price	\$48.00
Drawing Link	PDF
Optical Fiber Core Ø	0.5 mm
Sensing Distance with OPT series	60mm
Fiber Length (L)	2m
Fiber Bending Radius	15mm
Free Cut	Yes
Head Size	M3
Thread Pitch	0.5
Temperature Range	-40 to 85°C [-40 to 185°F]
Fiber Materials	PMMA
Sleeve Materials	PE (black)
Head Materials	Stainless steel
Fiber Distribution	Parallel arrangement
Opening Angle	55 degrees
Diameter Jacket	1mm
Light Emission	Straight



Cuttable Fiber Optic Cable

[OPT2052 Diffuse \(Reflex\) Mode](#)

OPT2052 Specifications	
Part Number	OPT2052
Price	\$60.00
Drawing Link	PDF
Optical Fiber Core Ø	0.5 mm
Sensing Distance with OPT series	60mm
Fiber Length (L)	2m
Fiber Bending Radius	15mm
Free Cut	Yes
Head Size	3mm
Thread Pitch	NA
Temperature Range	-40 to 85°C [-40 to 185°F]
Fiber Materials	PMMA
Sleeve Materials	PE (black)
Head Materials	Stainless steel
Fiber Distribution	Coaxial arrangement
Opening Angle	55 degrees
Diameter Jacket	1.3 mm
Light Emission	Straight



[OPT2053 Diffuse \(Reflex\) Mode](#)

OPT2053 Specifications	
Part Number	OPT2053
Price	\$60.00
Drawing Link	PDF
Optical Fiber Core Ø	0.5 mm
Sensing Distance with OPT series	60mm
Fiber Length (L)	2m
Fiber Bending Radius	15mm
Free Cut	Yes
Head Size	M3
Thread Pitch	0.5
Temperature Range	-40 to 85°C [-40 to 185°F]
Fiber Materials	PMMA
Sleeve Materials	PE (black)
Head Materials	Stainless steel
Fiber Distribution	Coaxial arrangement
Opening Angle	55 degrees
Diameter Jacket	1.3 mm
Light Emission	Straight



Cuttable Fiber Optic Cable

OPT2054 Diffuse (Reflex) Mode

OPT2054 Specifications	
Part Number	OPT2054
Price	\$48.00
Drawing Link	PDF
Optical Fiber Core Ø	1mm
Sensing Distance with OPT series	160mm
Fiber Length (L)	2m
Fiber Bending Radius	30mm
Free Cut	Yes
Head Size	M6
Thread Pitch	0.75
Temperature Range	-40 to 85°C [-40 to 185°F]
Fiber Materials	PMMA
Sleeve Materials	PE (black)
Head Materials	Nickel-plated brass
Fiber Distribution	Parallel arrangement
Opening Angle	55 degrees
Diameter Jacket	2.2 mm
Light Emission	Straight



OPT2055 Diffuse (Reflex) Mode

OPT2055 Specifications	
Part Number	OPT2055
Price	\$98.00
Drawing Link	PDF
Optical Fiber Core Ø	1mm
Sensing Distance with OPT series	60mm
Fiber Length (L)	2m
Fiber Bending Radius	30mm
Free Cut	Yes
Head Size	M6
Thread Pitch	0.75
Temperature Range	-40 to 85°C [-40 to 185°F]
Fiber Materials	PMMA
Sleeve Materials	PE (black)
Head Materials	Nickel-plated brass
Fiber Distribution	Parallel arrangement
Opening Angle	55 degrees
Diameter Jacket	2.2 mm
Light Emission	Straight



* 2000.0 mm maximum extended coil length.

Cuttable Fiber Optic Cable

[OPT2056 Diffuse \(Reflex\) Mode](#)

OPT2056 Specifications	
Part Number	OPT2056
Price	\$55.00
Drawing Link	PDF
Optical Fiber Core Ø	1mm
Sensing Distance with OPT series	160mm
Fiber Length (L)	2m
Fiber Bending Radius	30mm
Free Cut	Yes
Head Size	M6
Thread Pitch	0.75
Temperature Range	-40 to 85°C [-40 to 185°F]
Fiber Materials	PMMA
Sleeve Materials	PE (black)
Head Materials	Stainless steel
Fiber Distribution	Parallel arrangement
Opening Angle	55 degrees
Diameter Jacket	2.2 mm
Light Emission	Straight
Flexible Endpot	Yes



Flexible endpot is not for continuous flexing applications.

Cuttable Fiber Optic Cable

[OPT2059 Diffuse \(Reflex\) Mode](#)

OPT2059 Specifications	
Part Number	OPT2059
Price	\$122.00
Drawing Link	PDF
Optical Fiber Core Ø	1mm
Sensing Distance with OPT series	160mm
Fiber Length (L)	2m
Fiber Bending Radius	20mm
Free Cut	Yes
Head Size	12mm flat
Thread Pitch	NA
Temperature Range	-40 to 85°C [-40 to 185°F]
Fiber Materials	PMMA
Sleeve Materials	PE (black)
Head Materials	Aluminum
Fiber Distribution	Parallel arrangement
Opening Angle	55 degrees
Diameter Jacket	2.2 mm
Light Emission	Straight



Cuttable Fiber Optic Cable

[OPT2060 Diffuse \(Reflex\) Mode](#)

OPT2060 Specifications	
Part Number	OPT2060
Price	\$122.00
Drawing Link	PDF
Optical Fiber Core Ø	1mm
Sensing Distance with OPT series	50mm
Fiber Length (L)	2m
Fiber Bending Radius	20mm
Free Cut	Yes
Head Size	12mm flat
Thread Pitch	NA
Temperature Range	-40 to 85°C [-40 to 185°F]
Fiber Materials	PMMA
Sleeve Materials	PE (black)
Head Materials	Aluminum
Fiber Distribution	Parallel arrangement
Opening Angle	55 degrees
Diameter Jacket	2.2 mm
Light Emission	Sidewise



[OPT2061 Diffuse \(Reflex\) Mode](#)

OPT2061 Specifications	
Part Number	OPT2061
Price	\$122.00
Drawing Link	PDF
Optical Fiber Core Ø	1mm
Sensing Distance with OPT series	70mm
Fiber Length (L)	2m
Fiber Bending Radius	50mm
Free Cut	Yes
Head Size	M4
Thread Pitch	0.7
Temperature Range	-40 to 85°C [-40 to 185°F]
Fiber Materials	PMMA
Sleeve Materials	PE (black)
Head Materials	Stainless steel
Fiber Distribution	Parallel arrangement
Opening Angle	55 degrees
Diameter Jacket	2.2 mm
Light Emission	Sidewise



Cuttable Fiber Optic Cable

[OPT2062 Diffuse \(Reflex\) Mode](#)

OPT2062 Specifications	
Part Number	OPT2062
Price	\$122.00
Drawing Link	PDF
Optical Fiber Core Ø	1mm
Sensing Distance with OPT series	50mm
Fiber Length (L)	2m
Fiber Bending Radius	20mm
Free Cut	Yes
Head Size	5mm
Thread Pitch	NA
Temperature Range	-40 to 85°C [-40 to 185°F]
Fiber Materials	PMMA
Sleeve Materials	PE (black)
Head Materials	Stainless steel
Fiber Distribution	Parallel arrangement
Opening Angle	55 degrees
Diameter Jacket	2.2 mm
Light Emission	Sidewise



[OPT2063 Diffuse \(Reflex\) Mode](#)

OPT2063 Specifications	
Part Number	OPT2063
Price	\$122.00
Drawing Link	PDF
Optical Fiber Core Ø	1mm
Sensing Distance with OPT series	90mm
Fiber Length (L)	2m
Fiber Bending Radius	20mm
Free Cut	Yes
Head Size	M6
Thread Pitch	0.75
Temperature Range	-40 to 85°C [-40 to 185°F]
Fiber Materials	PMMA
Sleeve Materials	PE (black)
Head Materials	Nickel-plated brass
Fiber Distribution	Parallel arrangement
Opening Angle	55 degrees
Diameter Jacket	2.2 mm
Light Emission	Straight



Cuttable Fiber Optic Cable

OPT2064 Through-Beam Mode

OPT2064 Specifications	
Part Number	OPT2064
Price	\$56.00
Drawing Link	PDF
Optical Fiber Core Ø	0.5 mm
Sensing Distance with OPT series	160mm
Fiber Length (L)	2m
Fiber Bending Radius	15mm
Free Cut	Yes
Head Size	M3
Thread Pitch	0.5
Temperature Range	-40 to 85°C [-40 to 185°F]
Fiber Materials	PMMA
Sleeve Materials	PE (black)
Head Materials	Stainless steel
Fiber Distribution	Parallel arrangement
Opening Angle	55 degrees
Diameter Jacket	1mm
Light Emission	Straight



OPT2065 Through-Beam Mode

OPT2065 Specifications	
Part Number	OPT2065
Price	\$48.00
Drawing Link	PDF
Optical Fiber Core Ø	1mm
Sensing Distance with OPT series	400mm
Fiber Length (L)	2m
Fiber Bending Radius	30mm
Free Cut	Yes
Head Size	M3
Thread Pitch	0.5
Temperature Range	-40 to 85°C [-40 to 185°F]
Fiber Materials	PMMA
Sleeve Materials	PE (black)
Head Materials	Nickel-plated brass
Fiber Distribution	Parallel arrangement
Opening Angle	55 degrees
Diameter Jacket	2.2 mm
Light Emission	Straight



* Packaging includes two of the above

Cuttable Fiber Optic Cable

OPT2070 Through-Beam Mode

OPT2070 Specifications	
Part Number	OPT2070
Price	\$122.00
Drawing Link	PDF
Optical Fiber Core Ø	1mm
Sensing Distance with OPT series	200mm
Fiber Length (L)	2m
Fiber Bending Radius	20mm
Free Cut	Yes
Head Size	NA
Thread Pitch	NA
Temperature Range	-40 to 85°C [-40 to 185°F]
Fiber Materials	PMMA
Sleeve Materials	PE (black)
Head Materials	Aluminum
Fiber Distribution	Parallel arrangement
Opening Angle	55 degrees
Diameter Jacket	2.2 mm
Light Emission	Sidewise



* Packaging includes two of the above.

OPT2071 Through-Beam Mode

OPT2071 Specifications	
Part Number	OPT2071
Price	\$122.00
Drawing Link	PDF
Optical Fiber Core Ø	1mm
Sensing Distance with OPT series	250mm
Fiber Length (L)	2m
Fiber Bending Radius	2mm
Free Cut	Yes
Head Size	M4
Thread Pitch	0.7
Temperature Range	-40 to 85°C [-40 to 185°F]
Fiber Materials	PMMA
Sleeve Materials	PE (black)
Head Materials	Stainless steel
Fiber Distribution	Parallel arrangement
Opening Angle	55 degrees
Diameter Jacket	2.2 mm
Light Emission	Sidewise



* Packaging includes two of the above.

Cuttable Fiber Optic Cable

[OPT2074 Through-Beam Mode](#)

OPT2074 Specifications	
Part Number	OPT2074
Price	\$41.00
Drawing Link	PDF
Optical Fiber Core Ø	1mm
Sensing Distance with OPT series	350mm
Fiber Length (L)	2m
Fiber Bending Radius	20mm
Free Cut	Yes
Head Size	M4
Thread Pitch	0.7
Temperature Range	-40 to 85°C [-40 to 185°F]
Fiber Materials	PMMA
Sleeve Materials	PE (black)
Head Materials	Stainless steel
Fiber Distribution	Parallel arrangement
Opening Angle	55 degrees
Diameter Jacket	2.2 mm
Light Emission	Straight

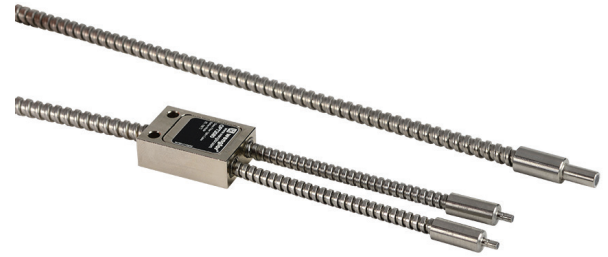


* Packaging includes two of the above.

Glass Fiber Optic Cable

OPT2080 Diffuse (Reflex) Mode

OPT2080 Specifications	
Part Number	OPT2080
Price	\$161.00
Drawing Link	PDF
Optical Fiber Core Ø	1.6 mm
Sensing Distance with OPT series	160mm
Fiber Length (L)	1m
Fiber Bending Radius	60mm
Free Cut	No
Head Size	5mm
Thread Pitch	NA
Temperature Range	-25 to 180°C [-13 to 365°F]
Fiber Materials	Glass
Sleeve Materials	Stainless steel
Head Materials	Stainless steel
Fiber Diameter	50µm
Fiber Distribution	Statistic mixture
Opening Angle	68 degrees
Light Emission	Straight



Glass Fiber Optic Cable

OPT2082 Diffuse (Reflex) Mode

OPT2082 Specifications	
Part Number	OPT2082
Price	\$149.00
Drawing Link	PDF
Optical Fiber Core Ø	1.6 mm
Sensing Distance with OPT series	160mm
Fiber Length (L)	1m
Fiber Bending Radius	50mm
Free Cut	No
Head Size	M6
Thread Pitch	1.0
Temperature Range	-25 to 180°C [-13 to 356°F]
Fiber Materials	Glass
Sleeve Materials	Nickel-plated brass
Head Materials	Aluminum
Fiber Diameter	50µm
Fiber Distribution	Separated bundles
Opening Angle	68 degrees
Light Emission	Straight



Glass Fiber Optic Cable

OPT2086 Through-Beam Mode

OPT2086 Specifications	
Part Number	OPT2086
Price	\$142.00
Drawing Link	PDF
Optical Fiber Core Ø	1.6 mm
Sensing Distance with OPT series	480mm
Fiber Length (L)	1m
Fiber Bending Radius	45mm
Free Cut	No
Head Size	M5
Thread Pitch	0.8
Temperature Range	-25 to 180°C [-13 to 365°F]
Fiber Materials	Glass
Sleeve Materials	Nickel-plated brass
Head Materials	Aluminum
Fiber Diameter	50µm
Fiber Distribution	Parallel arrangement
Opening Angle	68 degrees
Light Emission	Straight



* Packaging includes two of the above.