

Pfannenberg Signal Devices

ELECTRO-TECHNOLOGY FOR INDUSTRY

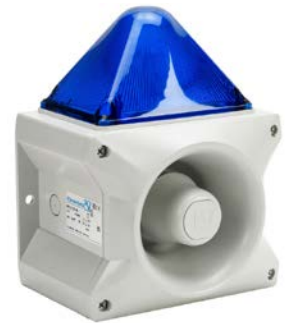
PATROL Xenon Audible-Visual Signal Beacons 214 x 156 x 270mm PA X 10-10 Series

Overview

Pfannenberg Xenon Audible-Visual Signal Beacons PATROL PA X 10-10 series produces acoustic signals in 80 different tones, which can be selected using an internal switch. The external control can be used to switch over to a maximum of 3 additional tones.

Features

- High efficiency and good penetration of acoustical obstacles significantly reduce the required number of sounders
- Pre-wired sounder and light
- Corresponding light intensity available for every sound pressure level
- Surface-mount design for quick and easy installation
- High intensity Xenon tube
- 10-year warranty



23361157055



PATROL Xenon Audible-Visual Signal Beacons 214 x 156 x 270mm PA X 10-10 Series																
Part Number	Price	Operator Color	Light Color	Voltage Operating Range	Nominal Current Consumption ¹	Tone Type	Tone Frequency	Loudness Decibels	Bulb Type	Light Function	Weight	Drawing Link				
23361154055	\$630.00	Amber	Amber	115VAC 50/60 Hz	300–450mA	(80) selectable	150Hz 2.9 kHz	117dB at 1m	Xenon tube	Flashing Strobe (1Hz flash frequency)	2133g [4.70 lb]	PDF				
23361155055	\$630.00	Red	Red									PDF				
23361156055	\$630.00	Green	Green									PDF				
23361157055	\$630.00	Blue	Blue									PDF				
23361804055	\$630.00	Amber	Amber	24VDC	680–1040mA										2056g [4.53 lb]	PDF
23361805055	\$630.00	Red	Red													PDF
23361806055	\$630.00	Green	Green													PDF
23361807055	\$630.00	Blue	Blue													PDF

¹Power consumption dependent on operating voltage.

PATROL Xenon Audible-Visual Signal Beacons 214 x 156 x 270mm PA X 10-10 Series Specifications	
Sound Level Reduction	Maximum –12 dB via potentiometer
Alarm Tones	80 / Up to 4 tones are externally selectable
Flash Energy	10J
Flash Rate	1Hz (60 flashes/min)
Light Intensity (DIN 5037 with clear lens)	129cd
Operating Temperature	-40 to 55°C [-40 to 131°F]
Storage Temperature	-40 to 70°C [-40 to 158°F]
Relative Humidity	90%
Degree Of Protection	IP66, NEMA 4/4X
Protection Class	II (double insulated equipment)
Service Life Of The Light Source	Light emission still 70% after 8,000,000 flashes
Housing Material	Polycarbonate (PC)/ Acrylonitrile Butadiene Styrene (ABS) Blend
Lens Material	Polycarbonate (PC)
Cable Entry	4 x M20 knockouts prepared (on side), 1 knockout on back
Integrated Seal With Cable Entry	6–13 mm (feed-through grommet)
Connecting Terminals	2.5 mm ² fine wire with cable end sleeve, 16AWG
Agency Approval	CE, cULus File S7256