

PATLITE® Signal Devices

Rotating Industrial Signal Beacon Monocolor SK Series

Overview

SK series monocolor beacons are offered in three different LED colors (Blue, Red, and Amber). The reflector is designed to distribute light for clear, unambiguous indication.



SKH-M1J-B

Features

- Choose from 3 LED color options (Blue, Red, and Amber)
- Newly developed reflector emits evenly distributed light for clear, unambiguous indication
- High protection rating for operation in harsh environments
- Gasket optional
- IP23 (IP65 with optional gasket)
- 120rpm rotating light



Rotating Industrial Signal Beacon Monocolor SK Series Selection Chart									
Part Number	Price	LED Color	Type	Size	Light Function	Sound Level	Voltage	Drawing Link	Connection
SKS-M1J-B	\$89.00	Blue	Industrial signal beacon	80mm	rotating (120rpm)	N/A	12–24 VDC	PDF	pigtail
SKS-M1J-R	\$89.00	Red						PDF	
SKS-M1J-Y	\$89.00	Amber						PDF	
SKS-M2J-B	\$107.00	Blue					100–240 VAC	PDF	
SKS-M2J-R	\$107.00	Red						PDF	
SKS-M2J-Y	\$107.00	Amber						PDF	
SKH-M1J-B	\$103.00	Blue		100mm			12–24 VDC	PDF	
SKH-M1J-R	\$103.00	Red						PDF	
SKH-M1J-Y	\$103.00	Amber						PDF	
SKH-M2J-B	\$120.00	Blue					100–240 VAC	PDF	
SKH-M2J-R	\$120.00	Red						PDF	
SKH-M2J-Y	\$120.00	Amber						PDF	
SKP-M1J-B	\$124.00	Blue		150mm			12–24 VDC	PDF	
SKP-M1J-R	\$124.00	Red						PDF	
SKP-M1J-Y	\$124.00	Amber						PDF	
SKP-M2J-B	\$141.00	Blue					100–240 VAC	PDF	
SKP-M2J-R	\$141.00	Red						PDF	
SKP-M2J-Y	\$141.00	Amber						PDF	

PATLITE® Signal Devices

Rotating Industrial Signal Beacon Monocolor SK Series

Specifications

Rotating Industrial Signal Beacon Monocolor SK Series Technical Specifications																			
Part Number		SKH-M1J-B	SKH-M1J-R	SKH-M1J-Y	SKH-M2J-B	SKH-M2J-R	SKH-M2J-Y	SKP-M1J-B	SKP-M1J-R	SKP-M1J-Y	SKP-M2J-B	SKP-M2J-R	SKP-M2J-Y	SKS-M1J-B	SKS-M1J-R	SKS-M1J-Y	SKS-M2J-B	SKS-M2J-R	SKS-M2J-Y
Operating Voltage Range		10-30V DC			90-250V AC			10-30V DC			90-250V AC			10-30V DC			90-250V AC		
Rated Current Consumption		12VDC: 0.21A 24VDC: 0.12A			100VAC: 0.07A 240VAC: 0.04A			12VDC: 0.21A 24VDC: 0.12A			100VAC: 0.07A 240VAC: 0.04A			12VDC: 0.21A 24VDC: 0.12A			100VAC: 0.07A 240VAC: 0.04A		
Rated Power Consumption		12VDC: 2.5W 24VDC: 2.9W			3.0W			12VDC: 2.5W 24VDC: 2.9W			3.0W			12VDC: 2.5W 24VDC: 2.9W			3.0W		
Temperature Range	Operating	-10°C to +50°C (14°F to +122°F)																	
	Storage	-20°C to +60°C (-4°F to +140°F)																	
Humidity Range	Operating	Less than 90% (No condensation)																	
	Storage																		
Mounting		Indoor: Upright, Inverted & Sideways Outdoor: Upright																	
Insulation Resistance		More than 1MΩ at 500VDC between live part and non-current carrying metallic part			More than 3MΩ at 500VDC between live part and non-current carrying metallic part			More than 1MΩ at 500VDC between live part and non-current carrying metallic part			More than 3MΩ at 500VDC between live part and non-current carrying metallic part			More than 1MΩ at 500VDC between live part and non-current carrying metallic part			More than 3MΩ at 500VDC between live part and non-current carrying metallic part		
Withstand Voltage		500VAC applied for 1min between live part and non-current carrying metallic part without breaking insulation			4,000VAC applied for 1min between live part and non-current carrying metallic part without breaking insulation			500VAC applied for 1min between live part and non-current carrying metallic part without breaking insulation			4,000VAC applied for 1min between live part and non-current carrying metallic part without breaking insulation			500VAC applied for 1min between live part and non-current carrying metallic part without breaking insulation			4,000VAC applied for 1min between live part and non-current carrying metallic part without breaking insulation		
Wire Size		UL2464, PVC, 22 AWG×3			UL2464, PVC, 18 AWG×2 + 24 AWG×2			UL2464, PVC, 22 AWG×3			UL2464, PVC, 18 AWG×2 + 24 AWG×2			UL2464, PVC, 22 AWG×3			UL2464, PVC, 18 AWG×2 + 24 AWG×2		
Protection Rating		IP23 (IP65 when used with SZW-103 Rubber Gasket attachment)						IP23						IP23 (IP65 when used with SZW-102 Rubber Gasket attachment)					
Weight g [oz]		0.33kg			0.36kg			0.67kg			0.70kg			0.24kg			0.27kg		
Housing Material		Polycarbonate																	
Agency Approval		UL File No.E215660																	

To obtain the most current agency approval information, see the Agency Compliance & Certifications Checklist section on the specific part number's web page.

PATLITE® Signal Devices

Rotating Audible-Visual Signal Beacon Monocolor SK Series

Overview

SK series monocolor beacons are offered in three different LED colors (Blue, Red, and Amber). The reflector is designed to distribute light for clear, unambiguous indication.



SKH-M1JB-B



Features

- Choose from 3 LED color options (Blue, Red, and Amber)
- Newly developed reflector emits evenly distributed light for clear, unambiguous indication
- High protection rating for operation in harsh environments
- Gasket optional
- IP23 (IP65 with optional gasket)
- 120rpm rotating light

Rotating Audible-Visual Signal Beacon Monocolor SK Series Selection Chart									
Part Number	Price	LED Color	Type	Size	Light Function	Sound Level*	Voltage	Drawing Link	Connection
SKH-M1JB-B	\$117.00	Blue	Audible-visual signal beacon	100mm	rotating (120rpm)	88dB	12-24 VDC	PDF	pigtail
SKH-M1JB-R	\$117.00	Red						PDF	
SKH-M1JB-Y	\$117.00	Amber						PDF	
SKH-M1TB-B	\$117.00	Blue						PDF	push-in terminal
SKH-M1TB-R	\$117.00	Red						PDF	
SKH-M1TB-Y	\$117.00	Amber						PDF	
SKH-M2JB-B	\$134.00	Blue					100-240 VAC	PDF	pigtail
SKH-M2JB-R	\$134.00	Red						PDF	
SKH-M2JB-Y	\$134.00	Amber						PDF	
SKH-M2TB-B	\$134.00	Blue						PDF	push-in terminal
SKH-M2TB-R	\$134.00	Red						PDF	
SKH-M2TB-Y	\$134.00	Amber						PDF	

*1 meter from the front of the Buzzer opening

PATLITE® Signal Devices

Rotating Audible-Visual Signal Beacon Monocolor SK Series

Specifications

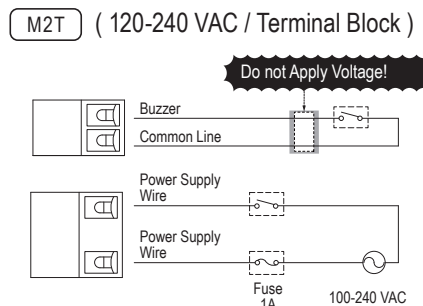
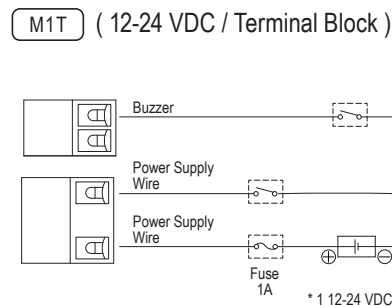
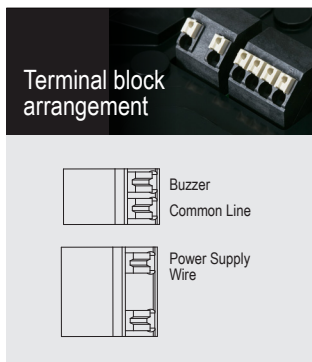
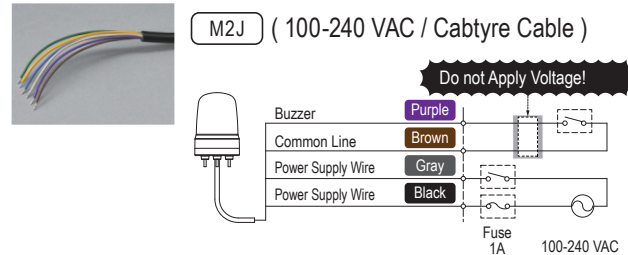
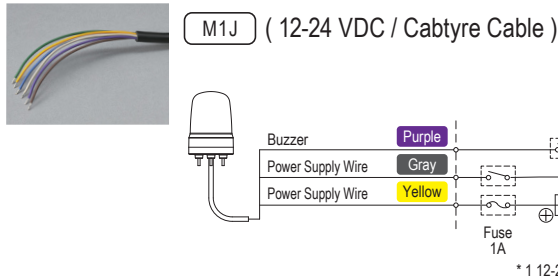
Rotating Audible-Visual Signal Beacon Monocolor SK Series Technical Specifications													
Part Number		<u>SKH-M1JB-B</u>	<u>SKH-M1JB-R</u>	<u>SKH-M1JB-Y</u>	<u>SKH-M1TB-B</u>	<u>SKH-M1TB-R</u>	<u>SKH-M1TB-Y</u>	<u>SKH-M2JB-B</u>	<u>SKH-M2JB-R</u>	<u>SKH-M2JB-Y</u>	<u>SKH-M2TB-B</u>	<u>SKH-M2TB-R</u>	<u>SKH-M2TB-Y</u>
Operating Voltage Range		10-30V DC						90-250V AC					
Rated Current Consumption		12VDC: 0.23A 24VDC: 0.15A						100VAC: 0.08A 240VAC: 0.05A					
Rated Power Consumption		12VDC: 2.8W 24VDC: 3.6W						3.3W					
Temperature Range	Operating	-10°C to +50°C (14°F to +122°F)											
	Storage	-20°C to +60°C (-4°F to +140°F)											
Humidity Range	Operating	Less than 90% (No condensation)											
	Storage												
Mounting		Indoor: Upright, Inverted & Sideways Outdoor: Upright											
Insulation Resistance		More than 1MΩ at 500VDC between live part and non-current carrying metallic part						More than 3MΩ at 500VDC between live part and non-current carrying metallic part					
Withstand Voltage		500VAC applied for 1min between live part and non-current carrying metallic part without breaking insulation						4,000VAC applied for 1min between live part and non-current carrying metallic part without breaking insulation					
Wire Size		UL2464, PVC, 22 AWG×3			Solid Wire : 0.13-1.5mm ² Stranded Wire : 28-14 AWG			UL2464, PVC, 18 AWG×2 + 24 AWG×2			Solid Wire : 0.13-1.5mm ² Stranded Wire : 28-14 AWG		
Protection Rating		IP23 (IP65 when used with SZW-103 Rubber Gasket attachment)											
Weight g [oz]		0.34kg			0.31kg			0.37kg			0.34kg		
Housing Material		Polycarbonate											
Agency Approval		UL File No.E215660											

To obtain the most current agency approval information, see the Agency Compliance & Certifications Checklist section on the specific part number's web page.

PATLITE® Signal Devices

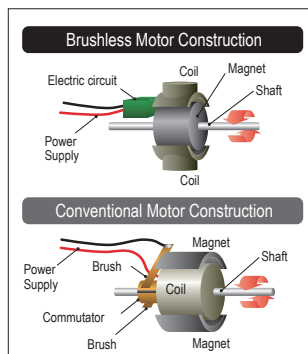
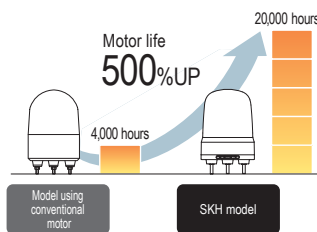
Rotating Audible-Visual Signal Beacon Monocolor SK Series

Wiring Diagrams

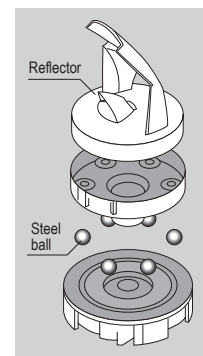


True Rotation

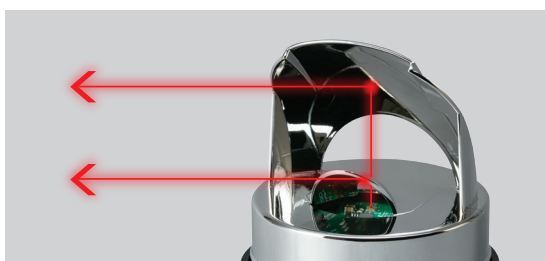
The SK is equipped with a brushless motor, which produces less heating than a conventional motor, and has a longer motor life.



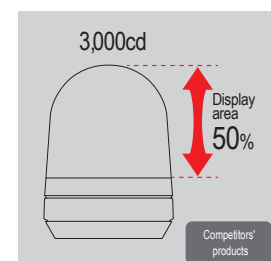
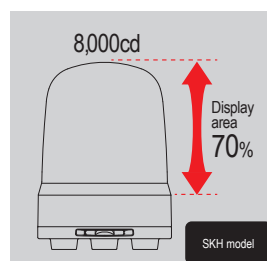
The steel ball bearings, located at the base of the reflector, are designed to greatly reduce wear over time and provides quiet reflector rotation.



This newly developed dual-reflector efficiently distributes LED light, creating bright, even light output.



The light-emitting surface is designed to provide maximum visibility and effective visual signals.



* Measured under the same conditions, at 1.3m from each unit.

PATLITE® Signal Devices

Audible-Visual and Industrial Signal Beacon Accessories SF, SK, and SL Series

Accessories SF, SK, and SL Series			
Part Number	Price	Description	Drawing Link
<u>SZK-101</u>	\$15.00	Patlite mounting bracket, wall mount, black, polycarbonate. For use with Patlite SKS, SKH, SF08, SF10, SL08 and SL10 series beacons.	<u>PDF</u>
<u>SZK-102</u>	\$17.00	Patlite mounting bracket, wall mount, silver, 304 stainless steel. For use with Patlite SKS, SKH, SF08, SF10, SL08 and SL10 series beacons.	<u>PDF</u>
<u>SZK-103</u>	\$29.00	Patlite mounting bracket, wall mount, silver, 305 stainless steel. For use with Patlite SKP and SL15 series beacons.	<u>PDF</u>
<u>SZK-104</u>	\$15.00	Patlite mounting bracket cover, wall mount, black, polycarbonate. For use with Patlite SZK-102 mounting bracket. Installation hardware included.	<u>PDF</u>
<u>SZK-105</u>	\$25.00	Patlite mounting bracket cover, wall mount, black, polycarbonate. For use with Patlite SZK-103 mounting bracket. Installation hardware included.	<u>PDF</u>
<u>SZP-101</u>	\$23.00	Patlite tube adapter, tube mount, 100mm diameter, black, polycarbonate. For use with Patlite SKH, SF10, SL10 series beacons and POLE22-xxxxAN or POLE22-xxxxAT mounting poles.	<u>PDF</u>
<u>SZP-102</u>	\$43.00	Patlite tube adapter, tube mount, 80mm diameter, 1/2in NPT thread, silver, aluminum. For use with Patlite SKS, SF08 and SL08 series beacons.	<u>PDF</u>
<u>SZP-103</u>	\$51.00	Patlite tube adapter, tube mount, 100mm diameter, 1/2in NPT thread, silver, aluminum. For use with Patlite SKH, SF10 and SL10 series beacons.	<u>PDF</u>
<u>SZP-104</u>	\$89.00	Patlite tube adapter, tube mount, 150mm diameter, 3/4in NPT thread, silver, aluminum. For use with Patlite SKP and SL15 series beacons.	<u>PDF</u>
<u>SZW-101</u>	\$17.00	Patlite mounting bracket, ceiling mount, 100mm diameter, black, cold-rolled steel. For use with Patlite SKH, SF10 and SL10 series beacons.	<u>PDF</u>
<u>SZW-102</u>	\$8.00	Patlite gasket, black, silicone. For use with Patlite SKS, SF08 and SL08 series beacons.	<u>PDF</u>
<u>SZW-103</u>	\$10.00	Patlite gasket, black, silicone. For use with Patlite SKH, SF10 and SL10 series beacons.	<u>PDF</u>



[SZK-101](#)



[SZK-102](#)



[SZK-103](#)



[SZK-104](#)



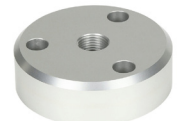
[SZK-105](#)



[SZP-101](#)



[SZP-102](#)



[SZP-103](#)



[SZP-104](#)



[SZW-101](#)



[SZW-102](#)



[SZW-103](#)