

PATLITE® 70mm LED Signal Towers

Features

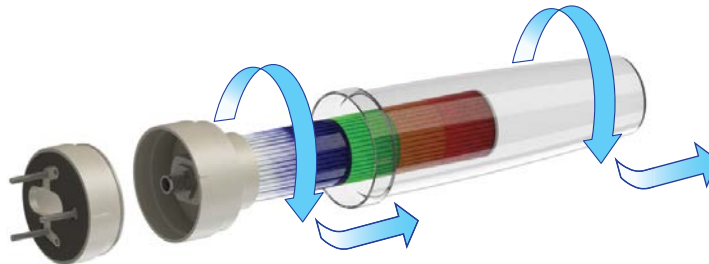
- Smooth surfaced body
- Stackable design
- Shock-resistant polycarbonate body
- M12 connector quick disconnect
- Inner lens LED emits a more efficient light
- IP65 (buzzer models IP54; WC9 models IP69k)



LS7

70mm LED Signal Towers Selection							
Part Number	Price	Drawing Link	Lights		Body Color	Buzzer	Wiring
			#	Color			
LS7-302DWC-RYGNN	\$162.00	PDF	3	red, amber, green	Dark gray	-	M12 Connector
LS7-502DWC-RYGBC	\$264.00	PDF	5	red, amber, green, blue, white		-	
LS7-302DBWC-RYGNN	\$209.00	PDF	3	red, amber, green		Yes	
LS7-502DBWC-RYGBC	\$309.00	PDF	5	red, amber, green, blue, white		-	
LS7-302WC-RYGNN	\$162.00	PDF	3	red, amber, green	Off-white	-	
LS7-502WC-RYGBC	\$264.00	PDF	5	red, amber, green, blue, white		-	
LS7-302BWC-RYGNN	\$209.00	PDF	3	red, amber, green		Yes	
LS7-502BWC-RYGBC	\$309.00	PDF	5	red, amber, green, blue, white		-	
LS7-302DWC9-RYGNN	\$322.00	PDF	3	red, amber, green	Dark gray	-	
LS7-502DWC9-RYGBC	\$420.00	PDF	5	red, amber, green, blue, white		-	
LS7-302DBWC9-RYGNN	\$373.00	PDF	3	red, amber, green		Yes	
LS7-502DBWC9-RYGBC	\$466.00	PDF	5	red, amber, green, blue, white		-	
LS7-302WC9-RYGNN	\$327.00	PDF	3	red, amber, green	Off-white	-	
LS7-502WC9-RYGBC	\$420.00	PDF	5	red, amber, green, blue, white		-	
LS7-302BWC9-RYGNN	\$361.00	PDF	3	red, amber, green		Yes	
LS7-502BWC9-RYGBC	\$456.00	PDF	5	red, amber, green, blue, white		-	

Note: Please see the accessories section of this section for optional and/or replacement components.



Stackable construction, M12 quick disconnect

PATLITE® 70mm LED Signal Towers

Specifications

70mm LED Signal Towers Technical Specifications								
# of Tiers	Part Number	Rated Voltage	Maximum Sound Pressure	Body Color	Type	Weight g [oz]		
3	LS7-302DWC-RYGNN	24VDC (±10%)	-	Dark gray	-	234 [8.25]		
	LS7-302WC-RYGNN			Off-white				
	LS7-302DWC9-RYGNN			Dark gray	High temperature, high pressure, wash down safe			
	LS7-302WC9-RYGNN			Off-white				
	LS7-302DBWC-RYGNN			Dark gray	-		288 [10.16]	
	LS7-302BWC-RYGNN			Off-white				
	LS7-302DBWC9-RYGNN			Dark gray	High temperature, high pressure, wash down safe			
	LS7-302BWC9-RYGNN			Off-white				
5	LS7-502DWC-RYGBC		24VDC (±10%)	-	Dark gray	-		286 [10.09]
	LS7-502WC-RYGBC				Off-white			
	LS7-502DWC9-RYGBC				Dark gray	High temperature, high pressure, wash down safe		
	LS7-502WC9-RYGBC				Off-white			
	LS7-502DBWC-RYGBC				Dark gray	-	352 [12.42]	
	LS7-502BWC-RYGBC				Off-white			
	LS7-502DBWC9-RYGBC				Dark gray	High temperature, high pressure, wash down safe		
	LS7-502BWC9-RYGBC				Off-white			
Signal wire current (Rated Current Consumption)	LED Unit	Red		Amber	Green	Blue		White
	Typical	20mA		30mA				
	Max	35mA		40mA				
Luminosity		>490mcd		>1140mcd	>940mcd	>195mcd		>1000mcd
Buzzer Current Draw		40mA						
Operating ambient temperature		-30°C to +60°C [-22°F to +140°F]						
Operating ambient humidity		Less than 90% (no condensation)						
Vibration resistance		19.6 m/s ² @ 30Hz						
Insulation resistance		More than 1MΩ at 500VDC between the terminals and the chassis						
Withstand voltage		500VAC applied for 1 min between terminals and chassis without breaking insulation						
Mass (tolerance ±10%)	3 Tiers	0.26 kg [0.57 lb]						
	5 Tiers	0.37 kg [0.82 lb]						
Ingress protection rating		Continuous illumination models: IP65 / Buzzer models: IP54 /WC9 models: IP69k						
Conformity standards *		UL 508, CSA-C22.2 No.14, RoHS Directive (EN 50581)						

* To obtain the most current agency approval information, see the Agency Approval Checklist section on the specific part number's web page.

PATLITE® 70mm LED Signal Towers

Accessories

Accessories for Patlite® 70mm Signal Towers			
Part Number	Price	Drawing Link	Description
<u>SZ-100D</u>	\$31.00	<u>PDF</u>	150mm tall pedestal, dark gray
<u>SZ-110D</u>	\$39.00	<u>PDF</u>	Wall mount bracket, dark gray
<u>SZ-130D</u>	\$39.00	<u>PDF</u>	3-hole to 4-hole mounting adapter, dark gray
<u>SZ-100</u>	\$31.00	<u>PDF</u>	150mm tall pedestal, off-white
<u>SZ-110</u>	\$39.00	<u>PDF</u>	Wall mount bracket, off-white
<u>SZ-130</u>	\$39.00	<u>PDF</u>	3-hole to 4-hole mounting adapter, off-white
<u>B45110011-F1</u>	\$33.50	<u>PDF</u>	Outer cover, polycarbonate
<u>Z35721039-F1</u>	\$10.50	N/A	O-ring for outer cover, silicone
<u>Z35721038-056F1</u>	\$10.50	N/A	O-ring for base, silicone



[SZ-100D](#)



[SZ-100](#)



[SZ-110D](#)



[SZ-110](#)



[SZ-130D](#)



[SZ-130](#)



[Z35721039-F1](#)

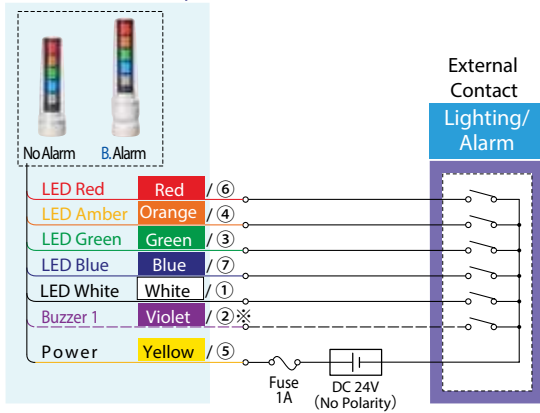


[Z35721038-056F1](#)

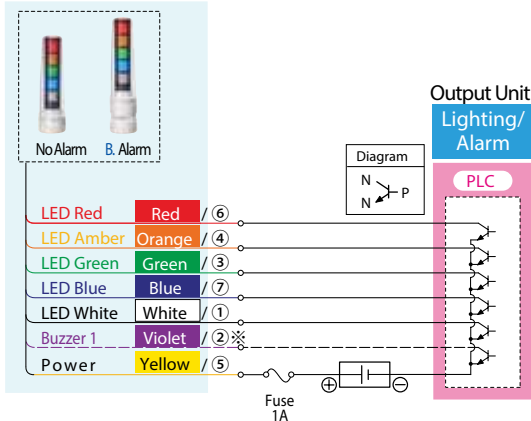
PATLITE® 70mm LED Signal Towers

Wiring

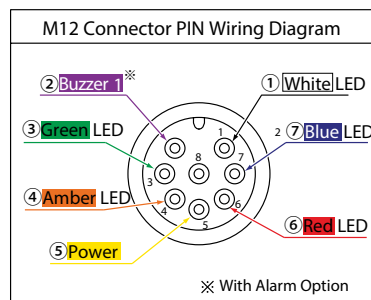
Contact Relay



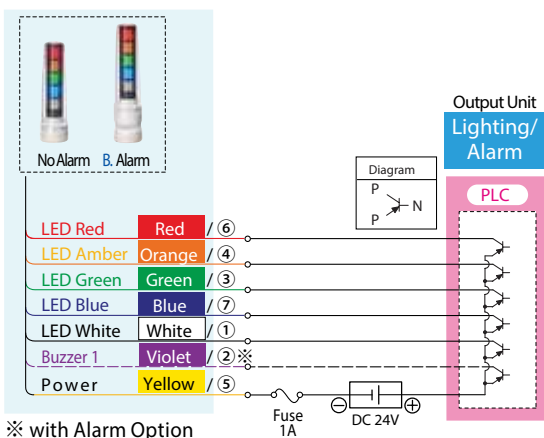
PLC (NPN Transistor)



LED colors associated with pin numbers



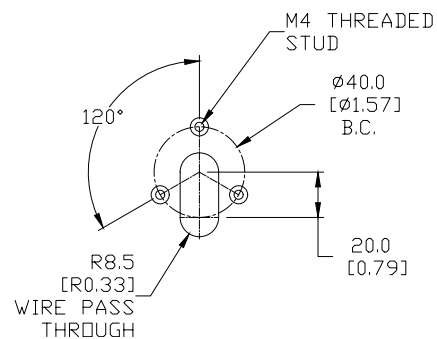
PLC (PNP Transistor)



※ with Alarm Option

LED colors associated with pin numbers

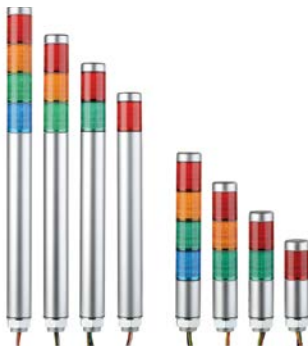
Mounting Pattern



PATLITE® Slim Design LED Signal Towers



MES-A and ME-A 25mm Super Slim Signal Towers
 These rust-free aluminum body signal towers are designed to be direct mounted. LED module lenses are clear and change color when activated. The super slim design is ideal for tight spaces.



MPS and MP 30mm Signal Towers
 These LED towers offer superior impact and heat resistance and have an ABS resin main body. They are designed for direct mounting and have a double insulation for enhanced durability and safety.



LR4 40mm Signal Towers
 The LR4 Series feature low maintenance and energy efficiency using LED technology.



LS7 70mm Signal Towers
 The LS7 Series feature a smooth body surface that reduces adhesion of water and dust. There are no exposed screws, shafts or other metals making these signal towers adaptable in many environments. This model is suitable for high pressure and high temperature wash down environments. An available model with a buzzer has a sound frequency that cuts through loud environments.

Accessories

