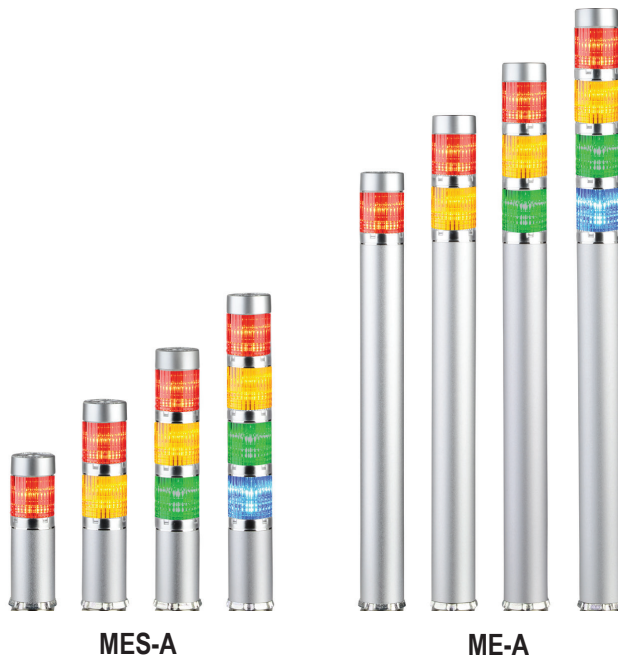


# PATLITE® 25mm LED Signal Towers

## Features

- Slim aluminum body is ideal for small devices
- Prism-cut lens design for enhanced visibility from any direction
- Impact and heat resistant polycarbonate resin lens for superior durability and light transmission
- High intensity illumination design
- Direct mount installation with a single hole
- Interchangeable modules do not need re-wiring, even after installation
- Corrosion resistant anodized aluminum body
- UL recognized File No. E215660
- NPN models IP42; PNP models IP65



| 25mm LED Signal Towers Selection |          |                     |         |                         |          |                  |               |               |                           |
|----------------------------------|----------|---------------------|---------|-------------------------|----------|------------------|---------------|---------------|---------------------------|
| Part Number                      | Price    | Drawing Link        | Modules |                         | Polarity | Light Function   | Wiring        | Body Style    | Mounting                  |
|                                  |          |                     | #       | LED                     |          |                  |               |               |                           |
| <a href="#">MES-102A-R</a>       | \$93.00  | <a href="#">PDF</a> | 1       | red                     | NPN      | Continuous light | 460mm pigtail | Short body    | Direct mount installation |
| <a href="#">MES-202A-RG</a>      | \$124.00 | <a href="#">PDF</a> | 2       | red, green              |          |                  |               |               |                           |
| <a href="#">MES-302A-RYG</a>     | \$146.00 | <a href="#">PDF</a> | 3       | red, amber, green       |          |                  |               |               |                           |
| <a href="#">MES-402A-RYGB</a>    | \$175.00 | <a href="#">PDF</a> | 4       | red, amber, green, blue |          |                  |               |               |                           |
| <a href="#">MES-102P-R</a>       | \$93.00  | <a href="#">PDF</a> | 1       | red                     | PNP      |                  |               |               |                           |
| <a href="#">MES-202P-RG</a>      | \$114.00 | <a href="#">PDF</a> | 2       | red, green              |          |                  |               |               |                           |
| <a href="#">MES-302P-RYG</a>     | \$151.00 | <a href="#">PDF</a> | 3       | red, amber, green       |          |                  |               |               |                           |
| <a href="#">MES-402P-RYGB</a>    | \$175.00 | <a href="#">PDF</a> | 4       | red, amber, green, blue |          |                  |               |               |                           |
| <a href="#">ME-102A-R</a>        | \$93.00  | <a href="#">PDF</a> | 1       | red                     | NPN      | Continuous light | 300mm pigtail | Standard body |                           |
| <a href="#">ME-202A-RG</a>       | \$124.00 | <a href="#">PDF</a> | 2       | red, green              |          |                  |               |               |                           |
| <a href="#">ME-302A-RYG</a>      | \$156.00 | <a href="#">PDF</a> | 3       | red, amber, green       |          |                  |               |               |                           |
| <a href="#">ME-402A-RYGB</a>     | \$184.00 | <a href="#">PDF</a> | 4       | red, amber, green, blue |          |                  |               |               |                           |
| <a href="#">ME-102P-R</a>        | \$93.00  | <a href="#">PDF</a> | 1       | red                     | PNP      |                  |               |               |                           |
| <a href="#">ME-202P-RG</a>       | \$124.00 | <a href="#">PDF</a> | 2       | red, green              |          |                  |               |               |                           |
| <a href="#">ME-302P-RYG</a>      | \$156.00 | <a href="#">PDF</a> | 3       | red, amber, green       |          |                  |               |               |                           |
| <a href="#">ME-402P-RYGB</a>     | \$184.00 | <a href="#">PDF</a> | 4       | red, amber, green, blue |          |                  |               |               |                           |

Note: Please see the accessories section of this section for optional and/or replacement components. Colors in order from left to right.

# PATLITE® 25mm LED Signal Towers

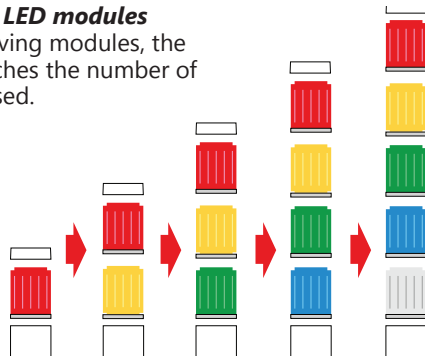
## Specifications

| 25mm LED Signal Towers Technical Specifications |  |               |          |                   |          |                   |            |               |          |
|---|--|---------------|----------|-------------------|----------|-------------------|------------|---------------|----------|
| # of Tiers                                      | Part Number  | Rated Voltage |          | Operating Voltage |          | Power Consumption |            | Weight g [oz] |          |
| 1   | <a href="#">MES-102A-R</a>   | 24VDC         |          | ±10%              | 0.6 W    | 120 [4.23]        |            |               |          |
|   | <a href="#">MES-102P-R</a>   |               |          |                   |          | 220 [7.76]        |            |               |          |
|   | <a href="#">ME-102A-R</a>  |               |          |                   |          |                   |            |               |          |
|   | <a href="#">ME-102P-R</a>  |               |          |                   |          |                   |            |               |          |
| 2   | <a href="#">MES-202A-RG</a>  |               |          |                   |          | 1.1 W             |            | 130 [4.59]    |          |
|   | <a href="#">MES-202P-RG</a>  |               |          |                   |          |                   |            | 230 [8.11]    |          |
|   | <a href="#">ME-202A-RG</a>   |               |          |                   |          |                   |            |               |          |
|   | <a href="#">ME-202P-RG</a>   |               |          |                   |          |                   |            |               |          |
| 3   | <a href="#">MES-302A-RYG</a>   |               |          |                   | 1.7 W    |                   | 140 [4.94] |               |          |
|   | <a href="#">MES-302P-RYG</a>   |               |          |                   |          |                   | 240 [8.47] |               |          |
|   | <a href="#">ME-302A-RYG</a>  |               |          |                   |          |                   |            |               |          |
|   | <a href="#">ME-302P-RYG</a>  |               |          |                   |          |                   |            |               |          |
| 4   | <a href="#">MES-402A-RYGB</a>  | 2.3 W         |          | 150 [5.29]        |          |                   |            |               |          |
|   | <a href="#">MES-402P-RYGB</a>  |               |          | 250 [8.82]        |          |                   |            |               |          |
|   | <a href="#">ME-402A-RYGB</a>   |               |          |                   |          |                   |            |               |          |
|   | <a href="#">ME-402P-RYGB</a>   |               |          |                   |          |                   |            |               |          |
| Signal wire current (Rated Current Consumption) | LED Unit   | Red           |          | Amber             |          | Green             |            | Blue          |          |
|   |  | NPN           | PNP      | NPN               | PNP      | NPN               | PNP        | NPN           | PNP      |
|   | Typical  | 25.2 mA       |          | 25.2 mA           |          | 13.3 mA           | 20.3 mA    | 13.3 mA       | 20.5 mA  |
|   | Max  | 30.2 mA       | 27.2 mA  | 29.2 mA           |          | 17.0 mA           | 23.8 mA    | 17.0 mA       | 27.0 mA  |
| Luminosity                                      |  | >1300 mcd     | >350 mcd | >800 mcd          | >700 mcd | >1100 mcd         | >500 mcd   | >500 mcd      | >250 mcd |
| Wire Size                                       | 22AWG  |               |          |                   |          |                   |            |               |          |
| Operating ambient temperature                   | -10 to +55°C [+14 to +133°F]   |               |          |                   |          |                   |            |               |          |
| Operating ambient humidity                      | Less than 90% (no condensation)  |               |          |                   |          |                   |            |               |          |
| Vibration resistance                            | 19.6 m/s² @ 30Hz   |               |          |                   |          |                   |            |               |          |
| Insulation resistance                           | More than 1MΩ at 500VDC between the terminals and the chassis                      |               |          |                   |          |                   |            |               |          |
| Withstand voltage                               | 500VAC applied for 1 min between terminals and chassis without breaking insulation |               |          |                   |          |                   |            |               |          |
| Ingress protection rating                       | PNP models IP65, NPN models IP42   |               |          |                   |          |                   |            |               |          |
| Conformity standards *                          | UL 508, CSA-C22.2 No.14, RoHs Directive (EN 50581)                                 |               |          |                   |          |                   |            |               |          |

\*To obtain the most current agency approval information, see the Agency Approval Checklist section on the specific part number's web page.

### Easily add or replace LED modules

When adding or removing modules, the center screw that matches the number of tiers has to be purchased.



### Interchangeable LED Modules

Color sequence is changeable by adding or removing up to 5 color modules even after installation.

NOTE: LED modules of the same color within a signal tower will light up simultaneously.

### Wiring does not change

The LED module colors correspond to the wiring, so re-wiring is not necessary.



# PATLITE® 25mm LED Signal Towers

## Accessories

| Accessories for 25mm Signal Towers |         |                     |  |
|------------------------------------|---------|---------------------|--|
| Part Number                        | Price   | Drawing Link        | Description                            |
| <a href="#">B72100223-1F1</a>      | \$33.50 | <a href="#">PDF</a> | Red NPN LED module                     |
| <a href="#">B72100223-2F1</a>      | \$33.50 | <a href="#">PDF</a> | Amber NPN LED module                   |
| <a href="#">B72100115-3F1</a>      | \$33.50 | <a href="#">PDF</a> | Green NPN LED module                   |
| <a href="#">B72100115-4F1</a>      | \$33.50 | <a href="#">PDF</a> | Blue NPN LED module                    |
| <a href="#">B72100115-7F1</a>      | \$33.50 | <a href="#">PDF</a> | Clear/white NPN LED module             |
| <a href="#">B72100226-1F1</a>      | \$41.00 | <a href="#">PDF</a> | Red PNP LED module                     |
| <a href="#">B72100226-2F1</a>      | \$41.00 | <a href="#">PDF</a> | Amber PNP LED module                   |
| <a href="#">B72100135-3F1</a>      | \$41.00 | <a href="#">PDF</a> | Green PNP LED module                   |
| <a href="#">B72100135-4F1</a>      | \$41.00 | <a href="#">PDF</a> | Blue PNP LED module                    |
| <a href="#">B72100135-7F1</a>      | \$41.00 | <a href="#">PDF</a> | Clear/white PNP LED module             |
| <a href="#">S33552110-0346F1</a>   | \$6.00  | N/A                 | 1-tier center screw, zinc plated steel |
| <a href="#">S33552110-0376F1</a>   | \$7.25  | N/A                 | 2-tier center screw, zinc plated steel |
| <a href="#">S33552110-03108F1</a>  | \$7.25  | N/A                 | 3-tier center screw, zinc plated steel |
| <a href="#">S33552110-03138F1</a>  | \$7.25  | N/A                 | 4-tier center screw, zinc plated steel |
| <a href="#">B32310020-F1</a>       | \$9.25  | <a href="#">PDF</a> | 25mm diameter cap, ABS plastic         |



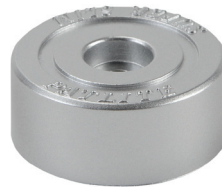
**B72100223, B72100115**



**B72100226, B72100135**



**S33552110**

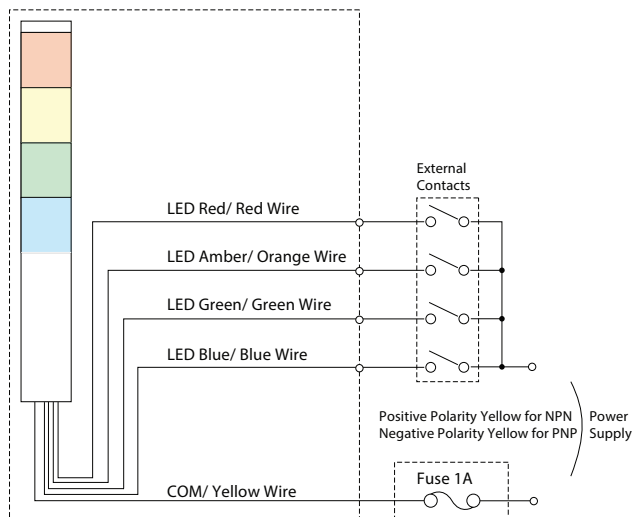


**B32310020-F1**

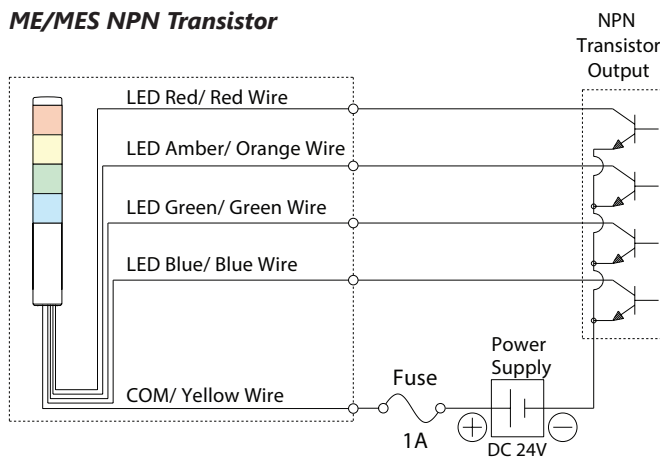
# PATLITE® 25mm LED Signal Towers

## Wiring

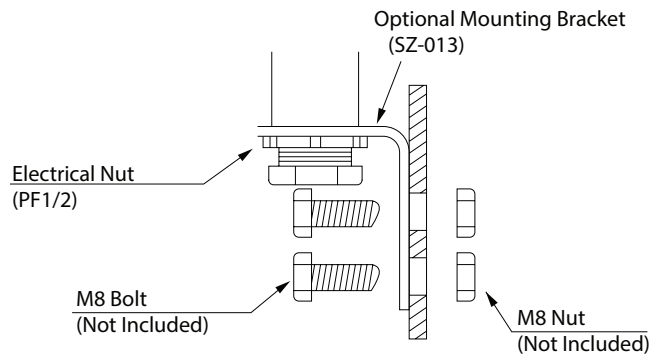
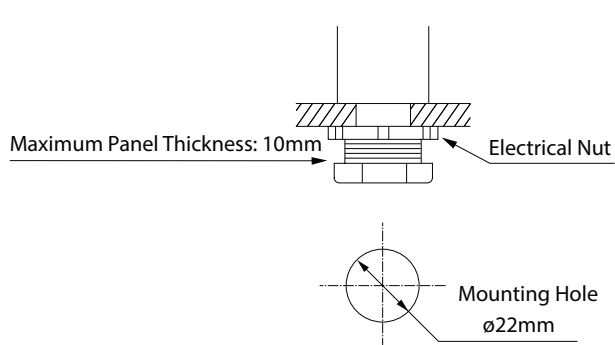
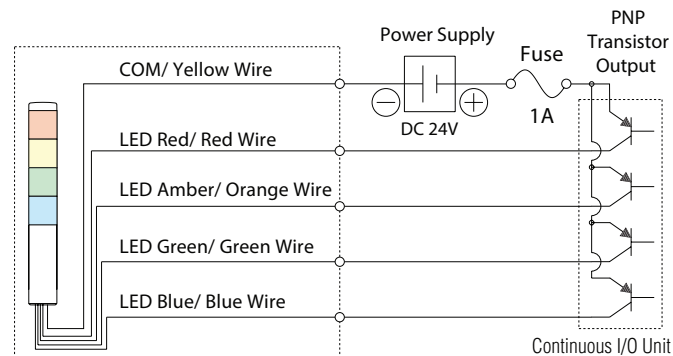
### ME/MES Contact/Switch



### ME/MES NPN Transistor



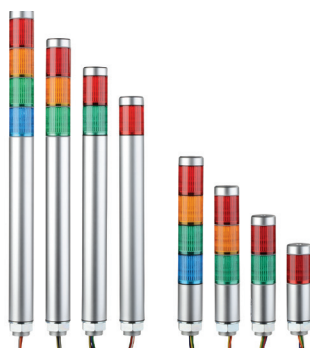
### ME/MES PNP Transistor



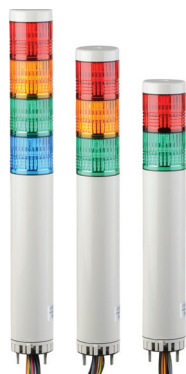
# PATLITE® Slim Design LED Signal Towers



**MES-A and ME-A 25mm Super Slim Signal Towers**  
 These rust-free aluminum body signal towers are designed to be direct mounted. LED module lenses are clear and change color when activated. The super slim design is ideal for tight spaces.



**MPS and MP 30mm Signal Towers**  
 These LED towers offer superior impact and heat resistance and have an ABS resin main body. They are designed for direct mounting and have a double insulation for enhanced durability and safety.



**LR4 40mm Signal Towers**  
 The LR4 Series feature low maintenance and energy efficiency using LED technology.



**LS7 70mm Signal Towers**  
 The LS7 Series feature a smooth body surface that reduces adhesion of water and dust. There are no exposed screws, shafts or other metals making these signal towers adaptable in many environments. This model is suitable for high pressure and high temperature wash down environments. An available model with a buzzer has a sound frequency that cuts through loud environments.

**Accessories**

