

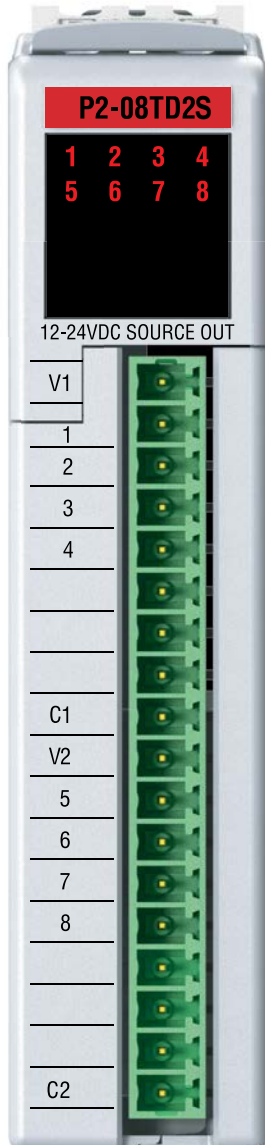
DC Output Modules

P2-08TD2S

\$68.00

Sourcing Output

The P2-08TD2S DC Output Module provides eight outputs, isolated four per common, that source up to 2A per output from 12–24 VDC supplies.



Terminal block sold separately

| Output Specifications | |
|---------------------------------------|--------------------------------|
| Outputs per Module | 8 sourcing |
| Output Type | P-channel MOSFET, open source |
| Rated Voltage | 12–24 VDC |
| Operating Voltage Range | 10.2–30 VDC |
| Maximum Output Current | 2A per point |
| Minimum Load Current | 0.4 mA |
| Maximum Leakage Current | 0.3 mA @ 30 VDC |
| On Voltage Drop | 0.2 VDC @ 2A |
| Maximum Inrush Current | 4A for 40ms, 6A for 10ms |
| OFF to ON Response | ≤0.5 ms |
| ON to OFF Response | ≤0.5 ms |
| Status Indicators | Logic Side (8 points) |
| Commons | 2 Isolated (4 points / common) |
| Fuses | None |
| External Power Supply Required | 12–24 VDC (-15% / +20%) @ 12mA |

| General Specifications | |
|---|---|
| Operating Temperature | 0° to 60°C (32° to 140°F) |
| Storage Temperature | -20° to 70°C (-4° to 158°F) |
| Humidity | 5 to 95% (non-condensing) |
| Environmental Air | No corrosive gases permitted |
| Vibration | IEC60068-2-6 (Test Fc) |
| Shock | IEC60068-2-27 (Test Ea) |
| Field to Logic Side Isolation | 1800VAC applied for 1 second |
| Insulation Resistance | >10MΩ @ 500VDC |
| Heat Dissipation | 2600mW |
| Enclosure Type | Open equipment |
| Module Keying to Backplane | Electronic |
| Module Location | Any I/O slot in any Productivity2000 system. |
| Field Wiring | Use ZIPLink wiring system or removable terminal block (not included). See Wiring Solutions. |
| Connector Type (Sold separately) | 18 Position removable terminal block |
| Weight | 98g (3.5 oz) |
| Agency Approvals** | UL 61010-2-201 file E139594, Canada & USA CE (EMC: EN61131-2*, SAFETY: EN61010-2-201) |

*Meets EMC and Safety requirements. See the Declaration of Conformity for details.

**To obtain the most current agency approval information, see the Agency Approval Checklist section on the specific component part number web page.



NOTE: The most recent Productivity Suite software and firmware versions may be required to support new modules and new features.

We recommend using prewired ZIPLink cables and connection modules. See Wiring Solutions. If you wish to hand-wire your module, a removable terminal block is sold separately. Order part number **P2-RTB** or **P2-RTB-1**.



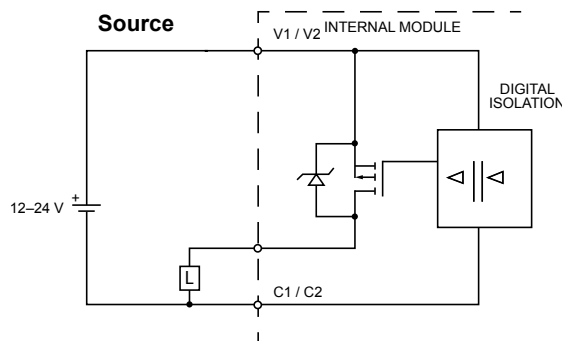
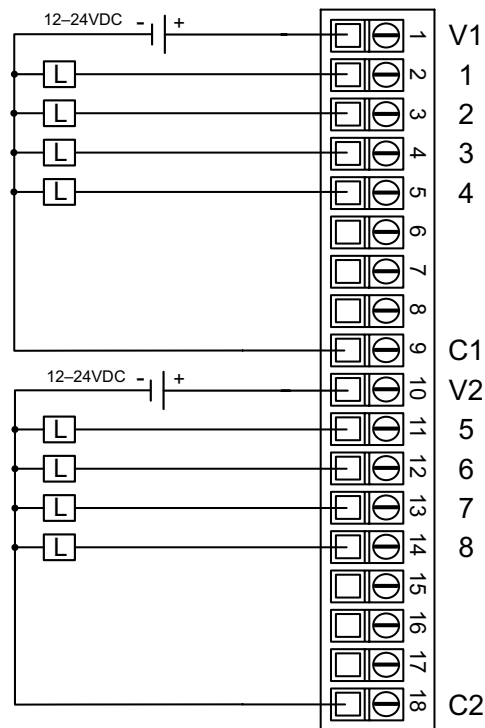
DC Output Modules

P2-08TD2S (cont'd)

| Removable Terminal Block Specifications | | |
|---|---|---|
| Part Number | P2-RTB | P2-RTB-1 |
| Number of positions | 18 screw terminals | 18 push release terminals |
| Wire Range | 30-16 AWG (0.051-1.31 mm ²) Solid/stranded conductor 3/64 in (1.2 mm) insulation max. 1/4 in (6-7 mm) strip length | 28-16 AWG (0.081-1.31 mm ²) Solid/stranded conductor 3/64 in (1.2 mm) insulation max. 19/64 in (7-8 mm) strip length |
| Conductors | USE COPPER CONDUCTORS, 75°C or equivalent. | |
| Screw Driver Width | 0.1 in. (2.5 mm) maximum | NA |
| Screw Size | M2 | N/A |
| Screw Torque | 2.5 lb-in (0.28 N·m) | N/A |

* Recommended screw driver: P/N TW-SD-MSL-1.

Wiring Diagrams





Wiring Solutions

Wiring Solutions using the ZIPLink wiring system

ZIPLinks eliminate the normally tedious process of wiring between devices by utilizing prewired cables and DIN rail mount connector modules. It's as simple as plugging in a cable connector at either end and terminating wires at only one end. Prewired cables keep installation clean and efficient, using half the space at a fraction of the cost of standard terminal blocks. There are several wiring solutions available when using the ZIPLink System ranging from

Solution 1: DirectLOGIC, CLICK, Productivity® 1000, Productivity® 2000 and Productivity3000® I/O Modules to ZIPLink Connector Modules

When looking for quick and easy I/O-to-field termination, a ZIPLink connector module used in conjunction with a prewired ZIPLink cable, consisting of an I/O terminal block at one end and a multi-pin connector at the other end, is the best solution.



CPU I/O-to-ZIPLink Connector Modules that are ready for field termination, options for connecting to third party devices, GS Series, DuraPulse and SureServo Drives, and specialty relay, transorb and communications modules. Pre-printed I/O-specific adhesive label strips for quick marking of ZIPLink modules are provided with ZIPLink cables. See the following solutions to help determine the best ZIPLink system for your application.

Use the CPU I/O Modules to ZIPLink Connector Modules selector tables located in the ZIPLink Wiring Solutions section to:

1. Locate your I/O module/CPU,
2. Select a ZIPLink Module, and
3. Select a corresponding ZIPLink Cable.

Solution 2: DirectLOGIC, CLICK, Productivity1000, Productivity2000 and Productivity3000 I/O Modules to 3rd Party Devices

When wanting to connect I/O to another device within close proximity of the I/O modules, no extra terminal blocks are necessary when using the ZIPLink Pigtail Cables. ZIPLink Pigtail Cables are prewired to an I/O terminal block with color-coded pigtail with soldered-tip wires on the other end.



Use the I/O Modules to 3rd Party Devices selector tables located in the ZIPLink Wiring Solutions section to:

1. Locate your CPU I/O module, and
2. Select a ZIPLink Pigtail Cable that is compatible with your 3rd party device.

Solution 3: GS Series and DuraPulse Drives Communication Cables

Need to communicate via Modbus RTU to a drive or a network of drives?

ZIPLink cables are available in a wide range of configurations for connecting to CPUs, SureServo, SureStep, Stellar Soft Starter and AC drives. Add a ZIPLink communications module to quickly and easily set up a multi-device network.

Use the Drives Communication selector tables located in the ZIPLink Wiring Solutions section to:

1. Locate your Drive and type of communications, and
2. Select a ZIPLink cable and other associated hardware.





Wiring Solutions

Solution 4: Serial Communications Cables

ZIPLink offers communications cables for use with DirectLOGIC, CLICK, Productivity1000, Productivity2000 and Productivity3000 CPUs, that can also be used with other communications devices. Connections include a 6-pin RJ12 or 9-pin, 15-pin and 25-pin D-Sub connectors which can be used in conjunction with the RJ12 or D-Sub Feedthrough modules.

Using the Serial Communications Cables selector table located in the ZIPLink Wiring Solutions section,

1. Locate your connector type
2. Select a cable.



Solution 5: Specialty ZIPLink Modules

For additional application solutions, ZIPLink Specialty Modules are available in a variety of configurations including stand-alone relays, 24VDC and 120VAC transorb modules, D-Sub, RJ12 and RJ45 feedthrough modules, communication port adapter and distribution modules, and SureServo 50-pin I/O interface connection.

Using the ZIPLink Specialty Modules selector table located in the ZIPLink Wiring Solutions section:

1. Locate the type of application.
2. Select a ZIPLink module.



Solution 6: ZIPLink Connector Modules to 3rd Party Devices

If you need a way to connect your device to terminal blocks without all that wiring time, then our pigtail cables with color-coded soldered-tip wires are a good solution. Used in conjunction with any compatible ZIPLink Connector Modules, a pigtail cable keeps wiring clean and easy and reduces troubleshooting time.

Use the Universal Connector Modules and Pigtail Cables table located in the ZIPLink Wiring Solutions section to:

1. Select module type,
2. Select the number of pins
3. Select cable.





I/O Modules to ZIPLink Connector Modules - Productivity2000

Discrete Input Modules

| Productivity2000 Input Module ZIPLink Selector | | | | |
|--|--------------------|-------------|-------------------------------|-------------------------------|
| I/O Input Module | ZIPLink Parameters | | | |
| | # of Terms | Component | Part No. | Cable Part No. |
| P2-08ND3-1 | 18 | Feedthrough | ZL-RTB20 (-1) | ZL-P2-CBL18 * |
| P2-16ND3-1 | 18 | Sensor/LED | ZL-LTB16-24-1 | |
| P2-16ND-TTL | 18 | Feedthrough | ZL-RTB20 (-1) | |
| P2-08NE3 | | | | |
| P2-16NE3 | | | | |
| P2-32ND3-1 | 40 | Feedthrough | ZL-RTB40 (-1) | ZL-CBL40 * |
| | | Sensor/LED | ZL-LTB16-24-1 | |
| P2-32NE3 | 40 | Feedthrough | ZL-RTB40 (-1) | |
| P2-08NAS | 8 | Feedthrough | ZL-RTB20 (-1) | ZL-P2-CBL18 * |
| P2-16NA | 18 | | | |

Discrete Output Modules

| Productivity2000 Output Module ZIPLink Selector | | | | | | | |
|---|--------------------|--|---|-------------------------------|-----------------|---------------------------------------|-------------------------------|
| I/O Output Module | ZIPLink Parameters | | | | | | |
| | # of Terms | Component | Part No. | Cable Part No. | | | |
| P2-08TD1S | 8 | Feedthrough | ZL-RTB20 (-1) | ZL-P2-CBL18 * | | | |
| P2-08TD2S | 8 | | | | | | |
| P2-15TD1 | 15 | | | | | | |
| P2-15TD2 | 15 | | | | | | |
| P2-08TD1P | 18 | | | | | | |
| P2-16TD-TTL | 18 | | | | | | |
| P2-08TD2P | 18 | | | | | | |
| P2-08TRS | 18 | | | | | | |
| P2-08TAS | 18 | | | | | | |
| P2-16TA | 18 | | | | Feedthrough | ZL-RTB20 (-1) | ZL-P2-CBL18 * |
| | | | | | Fuse | ZL-RFU20 ² | |
| P2-16TD1P | 18 | | | | Feedthrough | ZL-RTB20 (-1) | ZL-P2-CBL18 * |
| | | | | | Relay (Sinking) | ZL-RRL16-24-1 | |
| | | ZL-RRL16W-24-1 ZL-RRL16F-24-1 ZL-RRL16HDF-24-1 | | | | | |
| P2-16TD2P | 18 | Feedthrough | ZL-RTB20 (-1) | ZL-P2-CBL18 * | | | |
| | | Relay (Sourcing) | ZL-RRL16-24-2 ZL-RRL16W-24-2 ZL-RRL16F-24-2 ZL-RRL16HDF-24-2 | | | | |
| P2-32TD1P | 32 | Feedthrough | ZL-RTB40 (-1) | ZL-CBL40 * | | | |
| P2-32TD2P | 32 | | | | | | |
| P2-16TR | 18 | Feedthrough | ZL-RTB20 (-1) | ZL-P2-CBL18 * | | | |
| | | Fuse | ZL-RFU20 ² | | | | |

Specialty Modules

| Productivity2000 Specialty & Motion Modules ZIPLink Selector | | | | |
|--|--------------------|-------------|-------------------------------|--|
| I/O Module | ZIPLink Parameters | | | |
| | # of Terms | Component | Part No. | Cable Part No. |
| P2-HSI | 40 | Feedthrough | ZL-RTB40 (-1) | ZL-CBL40-S |
| P2-HSO | | | | ZL-CBL40-1S ZL-CBL40-2S |
| P2-02HSC | See Note 1 | | | |
| P2-04PWM | 18 | Feedthrough | ZL-RTB20 (-1) | ZL-P2-CBL18 * |
| P2-08SIM | See Note 1 | | | |
| P2-SCM | See Note 1 | | | |



* Select the cable length by replacing the * with: Blank = 0.5 m, -1 = 1.0 m, or -2 = 2.0 m.
 1. These modules are not supported by the ZIPLink wiring system
 2. Note: Fuses (5 x 20 mm) are not included. See Edison Electronic Fuse section for (5 x 20 mm) fuse. S500 and GMA electronic circuit protection for fast-acting maximum protection. S506 and GMC electronic circuit protection for time-delay performance. Ideal for inductive circuits.
 To ensure proper operation, do not exceed the voltage and current rating of ZIPLink module. [ZL-RFU20](#) = 2A per circuit; [ZL-RFU40](#) = 400 mA per circuit.



I/O Modules to ZIPLink Connector Modules - Productivity2000

Analog Input Modules

| Productivity2000 Analog Input Module ZIPLink Selector | | | | |
|---|--------------------|-------------|--------------------------------------|--------------------------------------|
| I/O Analog Module | ZIPLink Parameters | | | |
| | # of Terms | Component | Part No. | Cable Part No. |
| <u>P2-04AD</u> | 18 | Feedthrough | <u>ZL-RTB20</u> (-1) | <u>ZL-P2-CBL18</u> * |
| <u>P2-04AD-1</u> | | | | |
| <u>P2-04AD-2</u> | | | | |
| <u>P2-08AD-1</u> | | | | |
| <u>P2-08AD-2</u> | | | | |
| <u>P2-08ADL-1</u> | | | | |
| <u>P2-08ADL-2</u> | | | | |
| <u>P2-16AD-1</u> | 24 | | | <u>ZL-P2-CBL24</u> * |
| <u>P2-16AD-2</u> | | | | |
| <u>P2-16ADL-1</u> | | | | |
| <u>P2-16ADL-2</u> | | | | |
| <u>P2-06RTD</u> | Matched Only | See Note 1 | | |
| <u>P2-08THM</u> | T/C Wire Only | See Note 1 | | |
| <u>P2-08NTC</u> | Copper Conductors | See Note 1 | | |

* Select the cable length by replacing the * with: Blank = 0.5 m, -1 = 1.0 m, or -2 = 2.0 m.
 1. These modules are not supported by the ZIPLink wiring system.

Analog Output Modules

| Productivity2000 Analog Output Module ZIPLink Selector | | | | |
|--|--------------------|-------------|--------------------------------------|--------------------------------------|
| I/O Analog Module | ZIPLink Parameters | | | |
| | # of Terms | Component | Part No. | Cable Part No. |
| <u>P2-04DA</u> | 18 | Feedthrough | <u>ZL-RTB20</u> (-1) | <u>ZL-P2-CBL18</u> * |
| <u>P2-04DA-1</u> | | | | |
| <u>P2-04DA-2</u> | | | | |
| <u>P2-04DAL-1</u> | | | | |
| <u>P2-04DAL-2</u> | | | | |
| <u>P2-08DA-1</u> | | | | |
| <u>P2-08DA-2</u> | | | | |
| <u>P2-08DAL-1</u> | 24 | | | <u>ZL-P2-CBL24</u> * |
| <u>P2-08DAL-2</u> | | | | |
| <u>P2-16DA-1</u> | | | | |
| <u>P2-16DA-2</u> | | | | |
| <u>P2-16DAL-1</u> | 18 | | | <u>ZL-P2-CBL18</u> * |
| <u>P2-16DAL-2</u> | | | | |
| <u>P2-8AD4DA-1</u> | 18 | | | <u>ZL-P2-CBL18</u> * |
| <u>P2-8AD4DA-2</u> | | | | |



I/O Modules

A variety of discrete, analog and specialty I/O modules are available for use in a Productivity2000 system. Specifications for each module are on the following pages.

A filler module is available for unused I/O module slots (part number [P2-FILL](#)).

Discrete Input Modules

| Productivity2000 Discrete Input Modules | | | |
|---|------------------|----------------------------|----------|
| Part Number | Number of Inputs | Description | Price |
| P2-08SIM | 8 | Input Simulator Module | \$67.00 |
| P2-08ND3-1 | 8 | Sinking/Sourcing 12-24 VDC | \$70.00 |
| P2-16ND-TTL | 16 | Sinking/Sourcing | \$98.00 |
| P2-16ND3-1 | 16 | Sinking/Sourcing 24V AC/DC | \$98.00 |
| P2-32ND3-1 | 32 | Sinking/Sourcing 12-24 VDC | \$141.00 |
| P2-08NE3 | 8 | Sinking/Sourcing 24V AC/DC | \$57.00 |
| P2-16NE3 | 16 | Sinking/Sourcing 12-24 VDC | \$98.00 |
| P2-32NE3 | 32 | Sinking/Sourcing 24V AC/DC | \$141.00 |
| P2-08NAS | 8 | AC Isolated 100-120 VAC | \$109.00 |
| P2-16NA | 16 | AC 100-240 VAC | \$149.00 |

Specialty Modules

| Productivity2000 Specialty Modules | | | |
|------------------------------------|--------------------|------------------------------|----------|
| Part Number | Number of Channels | Description | Price |
| P2-HSI | 2 | High-Speed Input | \$278.00 |
| P2-HSO** | 2 | High-Speed Output | \$278.00 |
| P2-02HSC | 2 | High-Speed Counter | \$116.00 |
| P2-04PWM | 4 | Pulse-Width Modulation | \$128.00 |
| P2-SCM | 4 ports | Serial Communications Module | \$234.00 |

** ZIPLink required.

Analog Output Modules

| Productivity2000 Analog Output Modules | | | |
|--|--------------------|---------------------------------|----------|
| Part Number | Number of Channels | Description | Price |
| P2-04DA | 4 | Analog Output (Voltage/Current) | \$276.00 |
| P2-04DA-1 | 4 | Analog Output (Current) | \$210.00 |
| P2-04DA-2 | 4 | Analog Output (Voltage) | \$205.00 |
| P2-04DAL-1* | 4 | Analog Output (Current) | \$157.00 |
| P2-04DAL-2* | 4 | Analog Output (Voltage) | \$146.00 |
| P2-08DA-1 | 8 | Analog Output (Current) | \$385.00 |
| P2-08DA-2 | 8 | Analog Output (Voltage) | \$353.00 |
| P2-08DAL-1* | 8 | Analog Output (Current) | \$287.00 |
| P2-08DAL-2* | 8 | Analog Output (Voltage) | \$278.00 |
| P2-16DA-1 | 16 | Analog Output (Current) | \$503.00 |
| P2-16DA-2 | 16 | Analog Output (Voltage) | \$482.00 |
| P2-16DAL-1* | 16 | Analog Output (Current) | \$358.00 |
| P2-16DAL-2* | 16 | Analog Output (Voltage) | \$343.00 |

* Low resolution analog modules without OLED display.

Discrete Output Modules

| Productivity2000 Discrete Output Modules | | | |
|--|-------------------|--------------------|----------|
| Part Number | Number of Outputs | Description | Price |
| P2-08TD1S | 8 | Isolated Sinking | \$68.00 |
| P2-08TD2S | 8 | Isolated Sourcing | \$68.00 |
| P2-15TD1 | 15 | Sinking | \$94.00 |
| P2-15TD2 | 15 | Sourcing | \$92.00 |
| P2-08TD1P | 8 | Sinking Protected | \$58.00 |
| P2-08TD2P | 8 | Sourcing Protected | \$58.00 |
| P2-16TD-TTL | 16 | Sourcing | \$112.00 |
| P2-16TD1P | 16 | Sinking Protected | \$98.00 |
| P2-16TD2P | 16 | Sourcing Protected | \$98.00 |
| P2-32TD1P | 32 | Sinking Protected | \$141.00 |
| P2-32TD2P | 32 | Sourcing Protected | \$141.00 |
| P2-08TAS | 8 | Isolated AC | \$149.00 |
| P2-16TA | 16 | 100-240 VAC Output | \$184.00 |
| P2-06TRS | 6 | Isolated Relay | \$107.00 |
| P2-08TRS | 8 | Isolated Relay | \$71.00 |
| P2-16TR | 16 | Relay | \$134.00 |

Analog Input Modules

| Productivity2000 Analog Input Modules | | | |
|---------------------------------------|--------------------|--------------------------------|----------|
| Part Number | Number of Channels | Description | Price |
| P2-04AD | 4 | Analog Input (Voltage/Current) | \$278.00 |
| P2-04AD-1 | 4 | Analog Input (Current) | \$210.00 |
| P2-04AD-2 | 4 | Analog Input (Voltage) | \$216.00 |
| P2-08AD-1 | 8 | Analog Input (Current) | \$293.00 |
| P2-08AD-2 | 8 | Analog Input (Voltage) | \$322.00 |
| P2-08ADL-1* | 8 | Analog Input (Current) | \$205.00 |
| P2-08ADL-2* | 8 | Analog Input (Voltage) | \$222.00 |
| P2-16AD-1 | 16 | Analog Input (Current) | \$354.00 |
| P2-16AD-2 | 16 | Analog Input (Voltage) | \$392.00 |
| P2-16ADL-1* | 16 | Analog Input (Current) | \$252.00 |
| P2-16ADL-2* | 16 | Analog Input (Voltage) | \$279.00 |
| P2-06RTD | 6 | Analog RTD Input | \$460.00 |
| P2-08NTC | 8 | Analog Thermocouple Input | \$410.00 |
| P2-08THM | 8 | Analog Thermistor Input | \$452.00 |

| Productivity2000 Analog Input/Output Modules | | | |
|--|--------------------|-------------------------------|----------|
| Part Number | Number of Channels | Description | Price |
| P2-8AD4DA-1 | 8/4 | Analog Input/Output (Current) | \$441.00 |
| P2-8AD4DA-2 | 8/4 | Analog Input/Output (Voltage) | \$441.00 |

I/O Module Installation Procedure

WARNING: DO NOT APPLY FIELD POWER UNTIL THE FOLLOWING STEPS ARE COMPLETED. SEE HOT-SWAP PROCEDURE FOR EXCEPTIONS.

Step One: Align module catch with base slot and module into connector.



Step Two: Pull top locking tab toward module face. Click indicates lock is engaged.



Step Three: Attach field wiring using removable terminal block or ZIPLink wiring system.



WARNING: EXPLOSION HAZARD – DO NOT CONNECT OR DISCONNECT CONNECTORS OR OPERATE SWITCHES WHILE CIRCUIT IS LIVE UNLESS THE AREA IS KNOWN TO BE NON-HAZARDOUS. DO NOT HOT-SWAP MODULES UNLESS THE AREA IS KNOWN TO BE NON-HAZARDOUS.
