



# F-Series All Stainless Steel Pneumatic Cylinders - 3/4 inch Bore

## 3/4 in. Bore, Double-acting, Double End Mount, Magnetic Piston



NITRA pneumatic stainless steel round body, interchangeable, non-repairable cylinder, 3/4 inch bore, 1/8 inch female NPT ports, double acting, double end mount, magnetic piston.

All Stainless Steel Cylinder 3/4 in. bore, double acting, double end mount, magnetic piston				
Part Number	Stroke Length (in.)	Weight (lbs)	Price	Drawing Link
<a href="#">F12010DD-M</a>	1.0	0.3	\$152.00	<a href="#">PDF</a>
<a href="#">F12020DD-M</a>	2.0	0.5	\$155.00	<a href="#">PDF</a>
<a href="#">F12030DD-M</a>	3.0	0.5	\$157.00	<a href="#">PDF</a>
<a href="#">F12040DD-M</a>	4.0	0.5	\$159.00	<a href="#">PDF</a>
<a href="#">F12050DD-M</a>	5.0	0.6	\$161.00	<a href="#">PDF</a>
<a href="#">F12060DD-M</a>	6.0	0.6	\$164.00	<a href="#">PDF</a>
<a href="#">F12080DD-M</a>	8.0	0.8	\$168.00	<a href="#">PDF</a>
<a href="#">F12100DD-M</a>	10.0	0.8	\$174.00	<a href="#">PDF</a>
<a href="#">F12120DD-M</a>	12.0	0.9	\$179.00	<a href="#">PDF</a>
Specifications				
300 series stainless steel cylinder body		0.40 sq. in. piston area		
Rod diameter 1/4 in.		Rod thread 1/4-28		
300 series stainless steel end caps		Pre-lubricated for maintenance-free life		
300 series stainless steel piston rod		Pressure rating 250 psi		
Low friction Buna-N seals		Temperature range -20°F to 185°F (-28 to 85°C)		
Extend force at 100 psi = 40.0 lb.		Retract force at 100 psi = 35.1 lb.		

Mount Style	Bracket	Nut	
Front Nose Mount	<a href="#">FMB-6</a>	FN-58-18	
Rear Pivot Mount	<a href="#">FPBP-2</a>	-	
Double End Mount	Front	<a href="#">FMB-6</a>	FN-58-18
	Rear	<a href="#">FMB-6</a>	FN-58-18

Cylinder rod clevis [FRC-14-28](#)  
See end of F-series section for Accessories



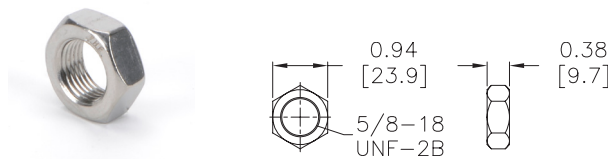
# F-Series All Stainless Steel Pneumatic Cylinder Accessories

F-Series All Stainless Steel Pneumatic Cylinder Accessories				
Part Number	Description	Pcs/Pkg	Wt (lb)	Price
<a href="#"><b>FN-58-18</b></a>	Cylinder mounting nut with 5/8-18 UNF-2B threads, stainless steel, used to mount 3/4 and 1-1/16 inch bore NITRA F-series round body air cylinders	1	0.1	\$3.50
<a href="#"><b>FN-34-16</b></a>	Cylinder mounting nut with 3/4-16 UNF-2B threads, stainless steel, used to mount 1-1/2 inch bore NITRA F-series round body air cylinders	1	0.1	\$4.50
<a href="#"><b>FN-114-12</b></a>	Cylinder mounting nut with 1-1/4-12 UNF-2B threads, stainless steel, used to mount 2 inch bore NITRA F-series round body air cylinders	1	0.3	\$11.00
<a href="#"><b>FMB-6</b></a>	Cylinder mounting bracket, stainless steel, used to mount 3/4 and 1-1/16 inch bore NITRA F-series round body air cylinders	1	0.1	\$10.00
<a href="#"><b>FMB-7</b></a>	Cylinder mounting bracket, stainless steel, used to mount 1-1/2 inch bore NITRA F-series round body air cylinders	1	0.2	\$30.50
<a href="#"><b>FMB-11</b></a>	Cylinder mounting bracket, stainless steel, used to mount 2 inch bore NITRA F-series round body air cylinders	1	0.5	\$44.00
<a href="#"><b>FPBP-2</b></a>	Cylinder pivot mounting bracket with pivot pin, stainless steel, used to mount 3/4 and 1-1/16 inch bore NITRA F-series round body air cylinders	1	0.1	\$28.00
<a href="#"><b>FPBP-3</b></a>	Cylinder pivot mounting bracket with pivot pin, stainless steel, used to mount 1-1/2 inch bore NITRA F-series round body air cylinders	1	0.2	\$35.00
<a href="#"><b>FPBP-4</b></a>	Cylinder pivot mounting bracket with pivot pin, stainless steel, used to mount 2 inch bore NITRA F-series round body air cylinders	1	0.3	\$43.00
<a href="#"><b>FRC-14-28</b></a>	Cylinder rod clevis and hex nut, stainless steel, 1/4-28 thread, for use with 3/4 inch bore NITRA F-series round body air cylinders	1	0.1	\$36.00
<a href="#"><b>FRC-516-24</b></a>	Cylinder rod clevis and hex nut, stainless steel, 5/16-24 thread, for use with 1-1/16 inch bore NITRA F-series round body air cylinders	1	0.1	\$40.50
<a href="#"><b>FRC-716-20</b></a>	Cylinder rod clevis and hex nut, stainless steel, 7/16-20 thread, for use with 1-1/2 inch bore NITRA F-series round body air cylinders	1	0.2	\$50.00
<a href="#"><b>FRC-12-20</b></a>	Cylinder rod clevis and hex nut, stainless steel, 1/2-20 thread, for use with 2 inch bore NITRA F-series round body air cylinders	1	0.2	\$59.00

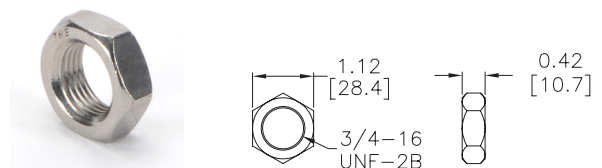
## Dimensions

inches [mm]

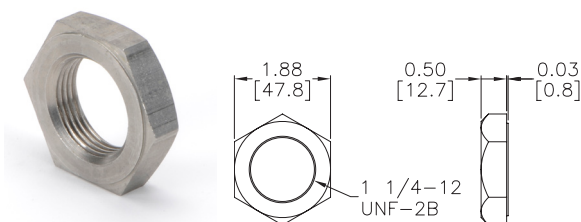
### FN-58-18



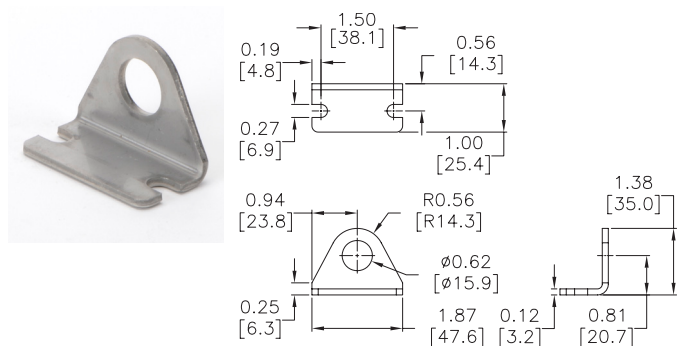
### FN-34-16



### FN-114-12



### FMB-6



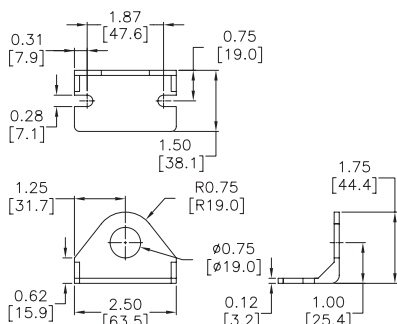


# F-Series All Stainless Steel Pneumatic Cylinder Accessories

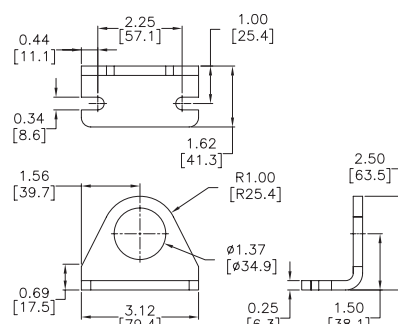
## Dimensions

inches [mm]

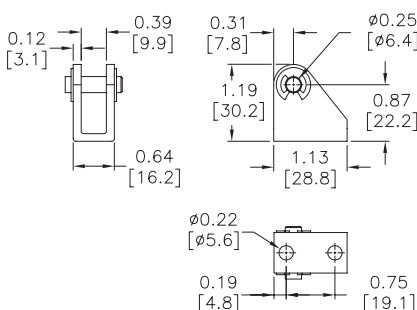
### FMB-7



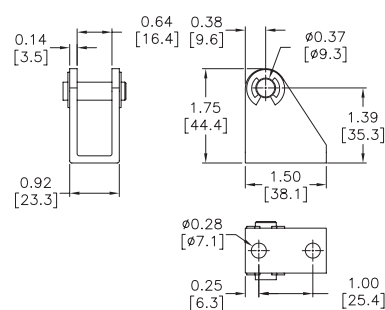
### FMB-11



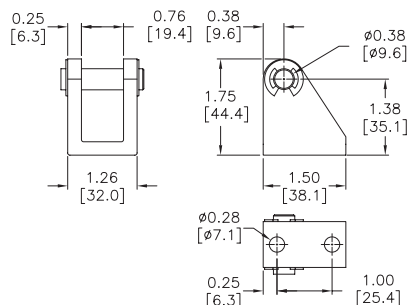
### FPBP-2



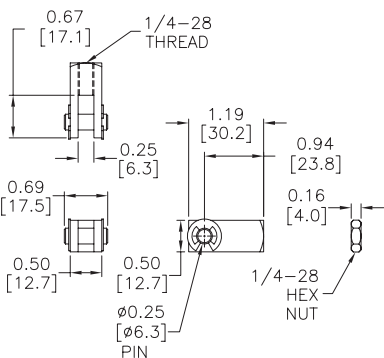
### FPBP-3



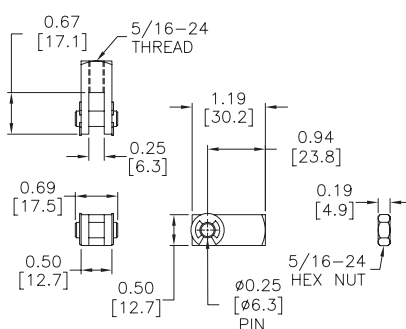
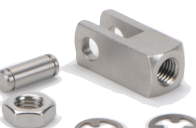
### FPBP-4



### FRC-14-28



### FRC-516-24



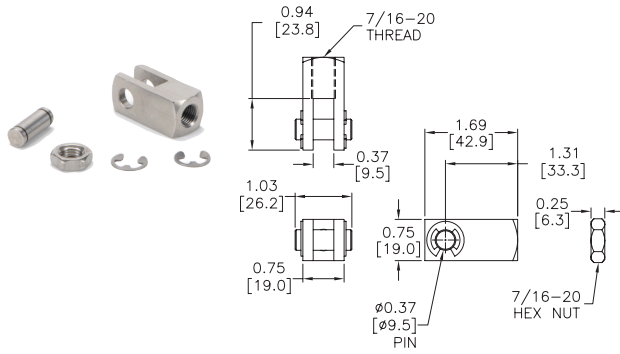


# F-Series All Stainless Steel Pneumatic Cylinder Accessories

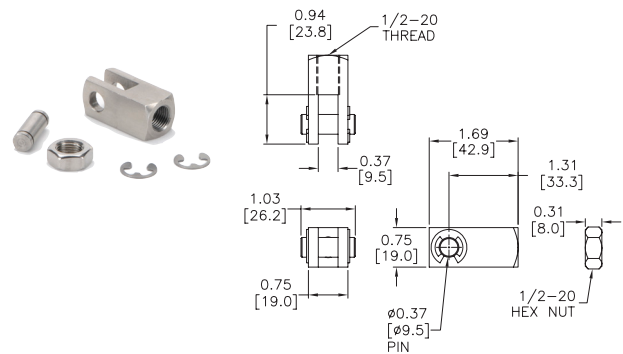
## Dimensions

inches [mm]

### FRC-716-20



### FRC-12-20





# CPS Series Cylinder Position Switches

Position Switch Cross Reference Chart			
NITRA Switch Type	Cylinder Brand (may fit some of these cylinders)	Photo Example	Groove Illustration
CPS CPSF	NITRA A-Series NITRA D-Series NITRA F-Series		
CPS9C	DE-STA-CO Robohand SMC Compact Air Bimba Fabco		
CPS9D	NITRA L-Series Fabco Numatics Rotomation		
CPS9E	NITRA L-Series Fabco Numatics Rotomation		
CPS9F	NITRA G-Series Fabco Festo Numatics Rotomation		
CPS9H	NITRA E-Series NITRA H-Series		
CPS9M	Norgren		
CPS9Q	NITRA L-Series NITRA G-Series Parker Fabco Festo Numatics Rotomation		